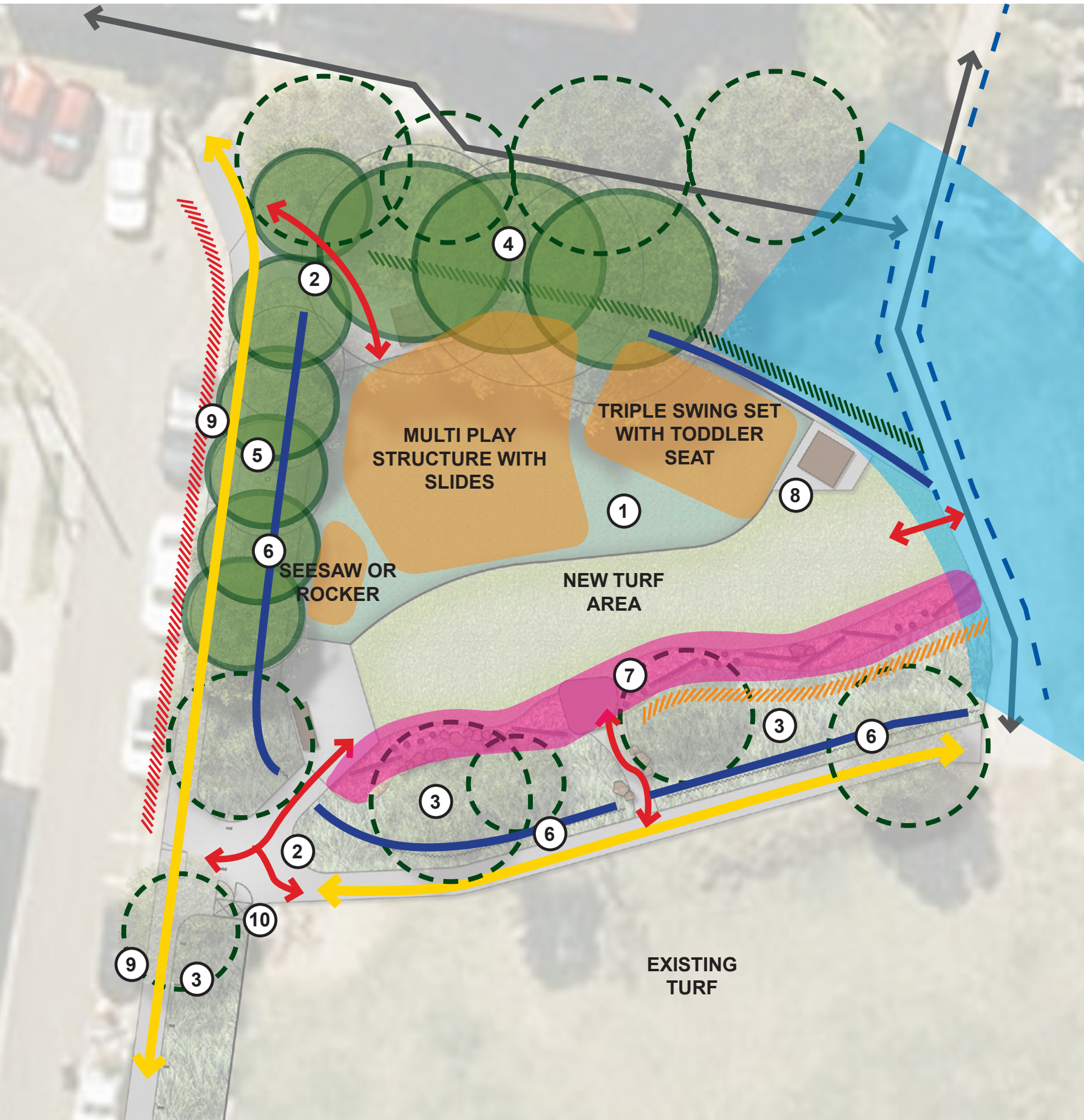


- 1 PLAYGROUND AREA IMPROVED WITH RUBBER SOFTFALL TO MEET NEW STANDARDS AND MAINTENANCE REQUIREMENTS.
- 2 IMPROVED PLAYGROUND ENTRIES WITH SEATING AREAS AND SPACE TO STORE PRAMS.
- 3 EXISTING TREES AND PLANTING RETAINED, WITH NEW INFILL PLANTING BETWEEN.
- 4 NEW SHADE TREES ON NORTHERN BOUNDARY TO PROVIDE SHADE TO THE PLAYGROUND WHEN MATURE.
- 5 NEW MEDIUM HEIGHT TREES ALONG MARKS LANE TO SUPPLEMENT EXISTING.
- 6 NEW LOW GARDEN BARRIER ADJACENT TO NEW PATH, TO HELP KEEP DOGS OUT OF PLAY SPACE, AND SEPARATION FROM ROAD.
- 7 NEW NATURE PLAY AREA WITH NEW TIMBER DECK STAGE, BALANCE BEAMS, STEPPER LOGS, AND SALVAGED SANDSTONE BLOCKS.
- 8 NEW PAVED AREA WITH TABLE SEAT.
- 9 NEW FOOTPATH TO BACK OF KERB, PROVIDING AN EVEN ACCESSIBLE SURFACE TO THE AMENITIES BUILDING.
- 10 NEW BIN AT ENTRY/EXIT TO MARKS LANE.



LEGEND

- EXISTING TREES
- PROPOSED TREES
- STEEP INCLINE DOWN
- SLIGHT INCLINE UP
- ROAD PROXIMITY
- PLAYGROUND ENTRY
- PLAY EQUIPMENT
- NATURE PLAY AREA
- LOW GARDEN BARRIER
- EXISTING STEEL HANDRAIL
- OCEAN VIEW

Project Title: **MARKS PARK
PLAYGROUND UPGRADE**

Drawing Name: **FUNCTIONAL CONCEPT LAYOUT**
Drawing No: **SK-02**

Date: 01.03.18
Drawn by: AC
Scale: NTS



① NATURE PLAY ELEMENTS



Balance beams, steppers, and rocks

② SEE SAW



Traditional seesaw to replace existing

③ MULTI-PLAY STRUCTURE EXPERIENCES



Slides from different heights



Climbing net structure of different scales and difficulty level, accommodating an inclusive play experience for a variety of ages.



④ SWING SET



Triple swing set to replace the existing