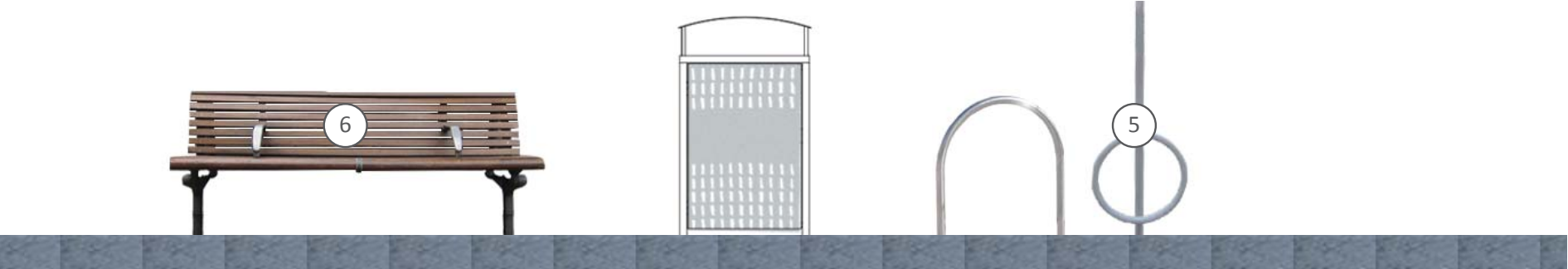
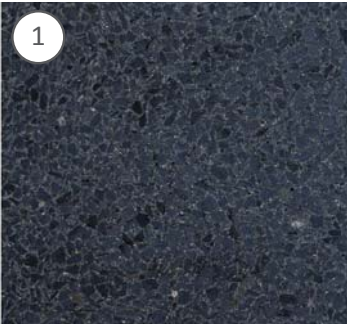


# CONCEPT DESIGN

The neighbourhood centre at the intersection of Blake Street and Military Road is an active meeting place and shopping destination with stunning views.

Waverley Council is planning the following upgrades to enhance the centre for both locals and visitors:

- 1 Visually define the commercial area and improve pedestrian safety with new footpath pavement (dark grey unit pavers), new kerb ramps and new concrete kerb and gutter
- 2 Improve pedestrian and road user safety by raising the pedestrian crossing and upgrading road markings
- 3 Improve amenity and calm traffic by renewing and extending mass planting of drought tolerant shrub species
- 4 Increase shade while maintaining views with new 6 meter high (approx.) street trees
- 5 Encourage bike use by increasing bike parking
- 6 Increase public seating opportunities and with new seats which take advantage of the views
- 7 Improve access to bus stop by extending concrete pavement







#1 - SITE IMAGE



#2 - SITE IMAGE

Project Title:  
**Blake Street Neighbourhood Centre  
 Upgrade**

Drawing Name: **Site Images**  
 Drawing No: **L02**

Date: **20.02.2015**  
 Drawn by: **YFD**  
 Scale: **NTS**







#3 - BUS STOP (SOUTHBOUND)



#4 - BUS STOP (NORTHBOUND)



#5 - FOOTPATH PAVEMENT ON PRIVATE PROPERTY



#6 - 2014 WORKS PLANTING, PAVING AND FURNITURE

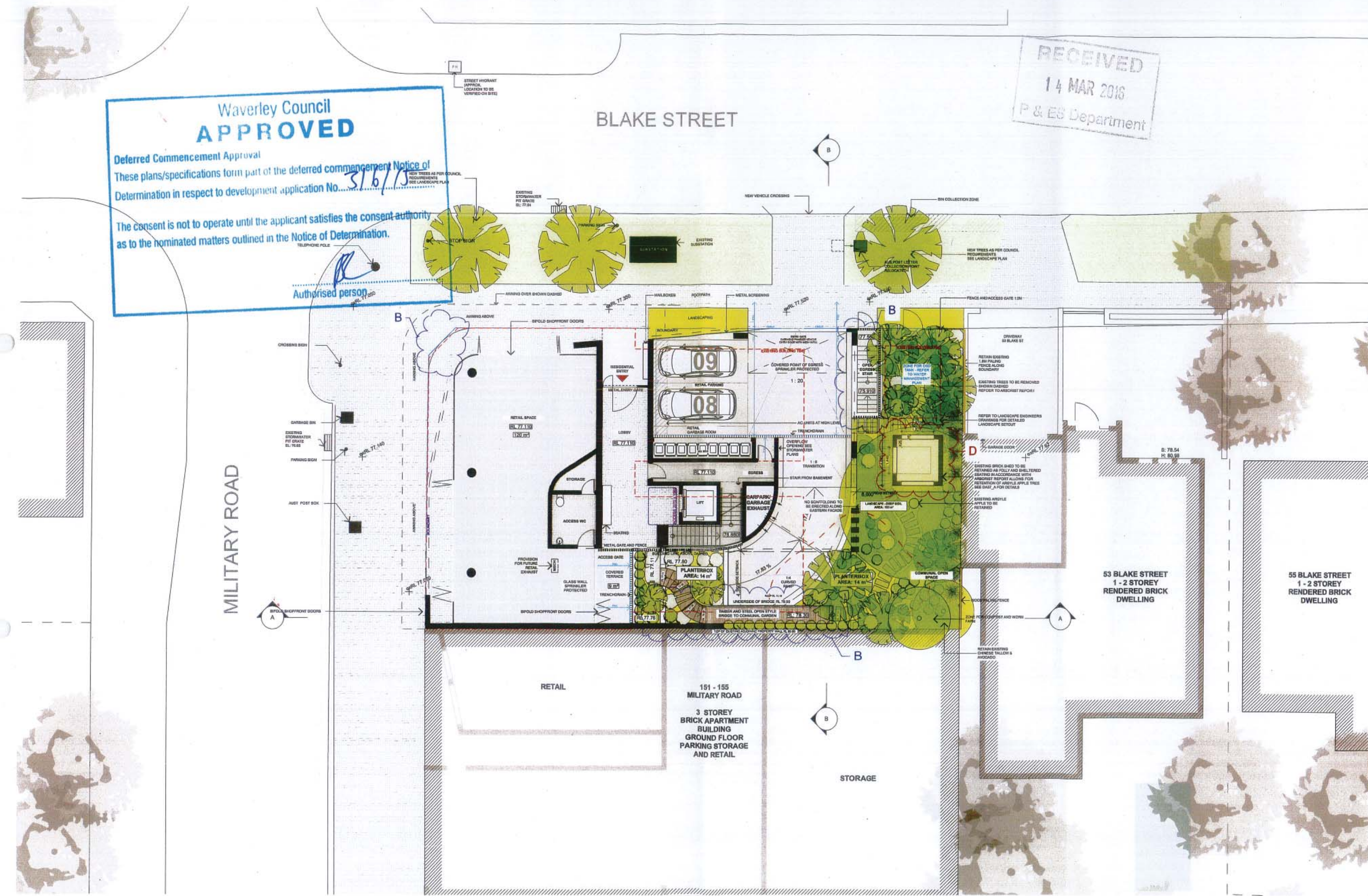


Waverley Council  
**APPROVED**  
Deferred Commencement Approval  
These plans/specifications form part of the deferred commencement Notice of Determination in respect to development application No. 316/15  
The consent is not to operate until the applicant satisfies the consent authority as to the nominated matters outlined in the Notice of Determination.

RECEIVED  
14 MAR 2016  
P & ES Department

BLAKE STREET

MILITARY ROAD



REVISIONS

A	ISSUE FOR DA	14.07.2015
B	REVISED TO COUNCIL REQUIREMENTS AS NOTED	20.11.2015
C	REVISED DA	02.10.2016
D	REVISED DA	03.14.2016

WAVELEY NOTES  
1. ALL WORKS TO BE IN ACCORDANCE WITH THE BUILDING CODE OF AUSTRALIA AND LOCAL AUTHORITY RULES.  
2. CONSTRUCTION TO BE IN ACCORDANCE WITH THE BUILDING CODE OF AUSTRALIA AND LOCAL AUTHORITY RULES.  
3. CONSTRUCTION TO BE IN ACCORDANCE WITH THE BUILDING CODE OF AUSTRALIA AND LOCAL AUTHORITY RULES.  
4. CONSTRUCTION TO BE IN ACCORDANCE WITH THE BUILDING CODE OF AUSTRALIA AND LOCAL AUTHORITY RULES.  
5. CONSTRUCTION TO BE IN ACCORDANCE WITH THE BUILDING CODE OF AUSTRALIA AND LOCAL AUTHORITY RULES.  
6. CONSTRUCTION TO BE IN ACCORDANCE WITH THE BUILDING CODE OF AUSTRALIA AND LOCAL AUTHORITY RULES.  
7. CONSTRUCTION TO BE IN ACCORDANCE WITH THE BUILDING CODE OF AUSTRALIA AND LOCAL AUTHORITY RULES.  
8. CONSTRUCTION TO BE IN ACCORDANCE WITH THE BUILDING CODE OF AUSTRALIA AND LOCAL AUTHORITY RULES.  
9. CONSTRUCTION TO BE IN ACCORDANCE WITH THE BUILDING CODE OF AUSTRALIA AND LOCAL AUTHORITY RULES.  
10. CONSTRUCTION TO BE IN ACCORDANCE WITH THE BUILDING CODE OF AUSTRALIA AND LOCAL AUTHORITY RULES.

ALL CONSTRUCTION TO COMPLY WITH MINIMUM WBCA CLAUSES A AUSTRALIAN STANDARDS  
CLAUSE 1.1 - INTERNAL & EXTERNAL CONSTRUCTION  
CLAUSE 1.2 - EXTERNAL CONSTRUCTION  
CLAUSE 1.3 - EXTERNAL CONSTRUCTION  
CLAUSE 1.4 - EXTERNAL CONSTRUCTION  
CLAUSE 1.5 - EXTERNAL CONSTRUCTION  
CLAUSE 1.6 - EXTERNAL CONSTRUCTION  
CLAUSE 1.7 - EXTERNAL CONSTRUCTION  
CLAUSE 1.8 - EXTERNAL CONSTRUCTION  
CLAUSE 1.9 - EXTERNAL CONSTRUCTION  
CLAUSE 1.10 - EXTERNAL CONSTRUCTION  
CLAUSE 1.11 - EXTERNAL CONSTRUCTION  
CLAUSE 1.12 - EXTERNAL CONSTRUCTION  
CLAUSE 1.13 - EXTERNAL CONSTRUCTION  
CLAUSE 1.14 - EXTERNAL CONSTRUCTION  
CLAUSE 1.15 - EXTERNAL CONSTRUCTION  
CLAUSE 1.16 - EXTERNAL CONSTRUCTION  
CLAUSE 1.17 - EXTERNAL CONSTRUCTION  
CLAUSE 1.18 - EXTERNAL CONSTRUCTION  
CLAUSE 1.19 - EXTERNAL CONSTRUCTION  
CLAUSE 1.20 - EXTERNAL CONSTRUCTION

SPECIFICATIONS TO COMPLY WITH MINIMUM WBCA CLAUSES A AUSTRALIAN STANDARDS  
SPECIFICATION 1.1 - EXTERNAL CONSTRUCTION  
SPECIFICATION 1.2 - EXTERNAL CONSTRUCTION  
SPECIFICATION 1.3 - EXTERNAL CONSTRUCTION  
SPECIFICATION 1.4 - EXTERNAL CONSTRUCTION  
SPECIFICATION 1.5 - EXTERNAL CONSTRUCTION  
SPECIFICATION 1.6 - EXTERNAL CONSTRUCTION  
SPECIFICATION 1.7 - EXTERNAL CONSTRUCTION  
SPECIFICATION 1.8 - EXTERNAL CONSTRUCTION  
SPECIFICATION 1.9 - EXTERNAL CONSTRUCTION  
SPECIFICATION 1.10 - EXTERNAL CONSTRUCTION  
SPECIFICATION 1.11 - EXTERNAL CONSTRUCTION  
SPECIFICATION 1.12 - EXTERNAL CONSTRUCTION  
SPECIFICATION 1.13 - EXTERNAL CONSTRUCTION  
SPECIFICATION 1.14 - EXTERNAL CONSTRUCTION  
SPECIFICATION 1.15 - EXTERNAL CONSTRUCTION  
SPECIFICATION 1.16 - EXTERNAL CONSTRUCTION  
SPECIFICATION 1.17 - EXTERNAL CONSTRUCTION  
SPECIFICATION 1.18 - EXTERNAL CONSTRUCTION  
SPECIFICATION 1.19 - EXTERNAL CONSTRUCTION  
SPECIFICATION 1.20 - EXTERNAL CONSTRUCTION

BARB COMMENTS  
1. ALL WORKS TO BE IN ACCORDANCE WITH THE BUILDING CODE OF AUSTRALIA AND LOCAL AUTHORITY RULES.  
2. CONSTRUCTION TO BE IN ACCORDANCE WITH THE BUILDING CODE OF AUSTRALIA AND LOCAL AUTHORITY RULES.  
3. CONSTRUCTION TO BE IN ACCORDANCE WITH THE BUILDING CODE OF AUSTRALIA AND LOCAL AUTHORITY RULES.  
4. CONSTRUCTION TO BE IN ACCORDANCE WITH THE BUILDING CODE OF AUSTRALIA AND LOCAL AUTHORITY RULES.  
5. CONSTRUCTION TO BE IN ACCORDANCE WITH THE BUILDING CODE OF AUSTRALIA AND LOCAL AUTHORITY RULES.  
6. CONSTRUCTION TO BE IN ACCORDANCE WITH THE BUILDING CODE OF AUSTRALIA AND LOCAL AUTHORITY RULES.  
7. CONSTRUCTION TO BE IN ACCORDANCE WITH THE BUILDING CODE OF AUSTRALIA AND LOCAL AUTHORITY RULES.  
8. CONSTRUCTION TO BE IN ACCORDANCE WITH THE BUILDING CODE OF AUSTRALIA AND LOCAL AUTHORITY RULES.  
9. CONSTRUCTION TO BE IN ACCORDANCE WITH THE BUILDING CODE OF AUSTRALIA AND LOCAL AUTHORITY RULES.  
10. CONSTRUCTION TO BE IN ACCORDANCE WITH THE BUILDING CODE OF AUSTRALIA AND LOCAL AUTHORITY RULES.

PROJECT: DEVELOPMENT APPLICATION  
PROJECT NO: 14-081  
DRAWN BY: MHNDU  
TO SCALE: 1:100 @ A1  
REV: 1  
DRAWING: GROUND FLOOR  
DA11\_D

MHNDU  
28 HUTCHINSON STREET  
SUNSHINE HILLS SYDNEY NSW 2010  
T +61 2 9101 1111  
F +61 2 9101 1100  
www.mhndu.com  
1401 (Design) Urban Pty Ltd ADM 04 023 717 000