

Thomas Hogan Reserve: Environmental Restoration Action Plan (ERAP)



Summary

The scope of this ERAP is to develop a framework for the long term management of vegetated portions of the Waverley Council managed Thomas Hogan Reserve.

The ERAP provides a prioritised succession of restoration works that have considered a long term commitment to biodiversity management. All proposed works within the reserve will provide for the creation of an urbanised habitat feature, through the implementation of suggestions as made by Thomas Hogan Management Plan (Waverley Council 2011).

Duration of ERAP

This ERAP will also aim to guide the future management of the reserve and will provide a set of clear objectives and performance criteria. This will assist in the ongoing management for an anticipated 15 year period years, or until the objectives and performance criteria outlined in this ERAP are met.

ERAP Implementation

To effectively deliver the ERAP, a three-staged program is to be implemented that will encompass an establishment phase (stages 1 and 2) and a two year maintenance phase (stage 3). It is anticipated that the establishment phase may take up to five years for its completion pending plant availability and rate of growth of planted specimens. .

Stage 1

Stage 1 works will provide for the site establishment and all preliminary works associated with the delivery of the ERAP. Activities, which includes the proposed restoration works within management zones MZ 1 and MZ 3:•

- Seed collection and propagation requirements.
- Tree management and removal of dangerous specimens.
- Install exclusion and directional fencing and edging.
- Weed control.
- Site preparation, mulching /jute matting and revegetation.
- Commencement of a weed control and revegetation maintenance program.
- Threatened species recovery planning and implementation.
- Native vegetation management implementation.

Stage 2

Stage 2 works will include the commencement of restoration works within management zone MZ 2, with the inclusion of maintenance activities within MZ 1 and MZ 3. Activities to be undertaken within stage 2 are to include:

- Continued weed and revegetation maintenance of MZ 1 and MZ 3.
- Weed control (primary and secondary) within MZ 2.

Thomas Hogan Reserve: Environmental Restoration Action Plan (ERAP)



- Site preparation, mulching /jute matting and revegetation of MZ 2.

Stage 3

Stage 3 works will look to commence the two year maintenance period with all management zones. Activities to be undertaken within stage 3 are to include:

- Weed control maintenance.
- Revegetation maintenance.

Ongoing site management

Upon the completion of both the establishment phase (stages 1 and 2) and the two year maintenance period (stage 3), activities will aim to increase and maintain the mid and ground story strata whilst maintaining a relatively weed free environment. Activities to be undertaken as a part of the ongoing management of the ERAP area are to include

- Weed control maintenance to include the re-application of mulch as required.
- Revegetation maintenance and supplementary revegetation.
- Removal of palm derived biomass.
- Maintenance of all erosion control measures and fencing / edging.

Stakeholder involvement

Waverley Council Parks Operations and natural areas Staff:

- Mowing all turfed areas (playground and lower level) to the edge bush shrub line.
- Removal of palm fronds from areas with <250 slope or that can be reached from a flat surface.
- Maintain formal garden beds.

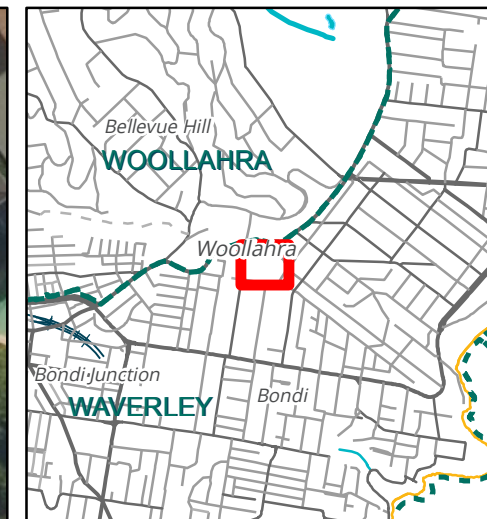
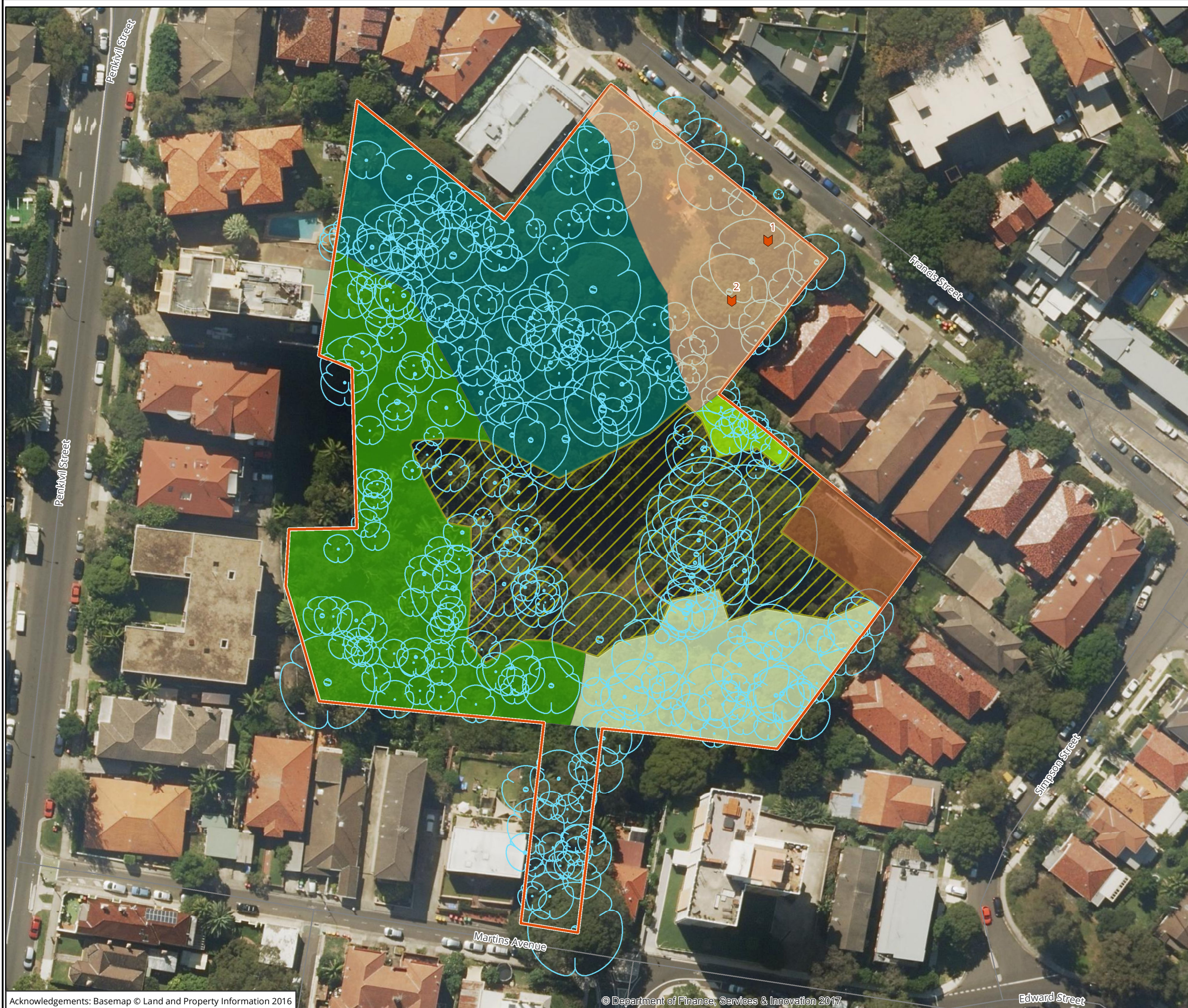
- Tidy and clean turfed areas, stairs, paths, furniture and playground of litter and fallen debris.
- Seasonal turf improvement amendments such as fertilising, aerating, wetting agent and herbicide for Bindii and Broadleaf weed species.
- Provide support for volunteer based activities within the reserve.

Council preferred supplier: Bush Regeneration Contractor):

- Implementation of staged ERAP under the direction of Waverley Council staff.
- Plant supply and install.
- Application of industry approved methods for weed control and soil stabilisation.

Waverley Council Bushcare/ Proposed Friends of Thomas Hogan Reserve:

- Provide ongoing support and care in the maintenance of the reserve. Activities may include planting, mulching and weed control.
- Seed collection.
- Monitor for both exotic and native fauna species.



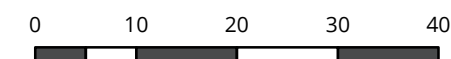
Legend

- Study area
- Community hall
- Park/Playground
- Turfed area
- Hollow-bearing trees

Management zone

- 1A
- 1B
- 2
- 3

Figure 2: Management zones



Metres
Scale: 1:750 @ A3
Coordinate System: GDA 1994 MGA Zone 56



Biosis Pty Ltd

Albury, Ballarat, Melbourne,
Newcastle, Sydney, Wangaratta & Wollongong

Matter: 27203
Date: 08 June 2018
Checked by: PP, Drawn by: GD, Last edited by: gdavies
Location: \\bio-data-01\matters\27200s\27203\mapping\27203_F2_MgmtZones_v2