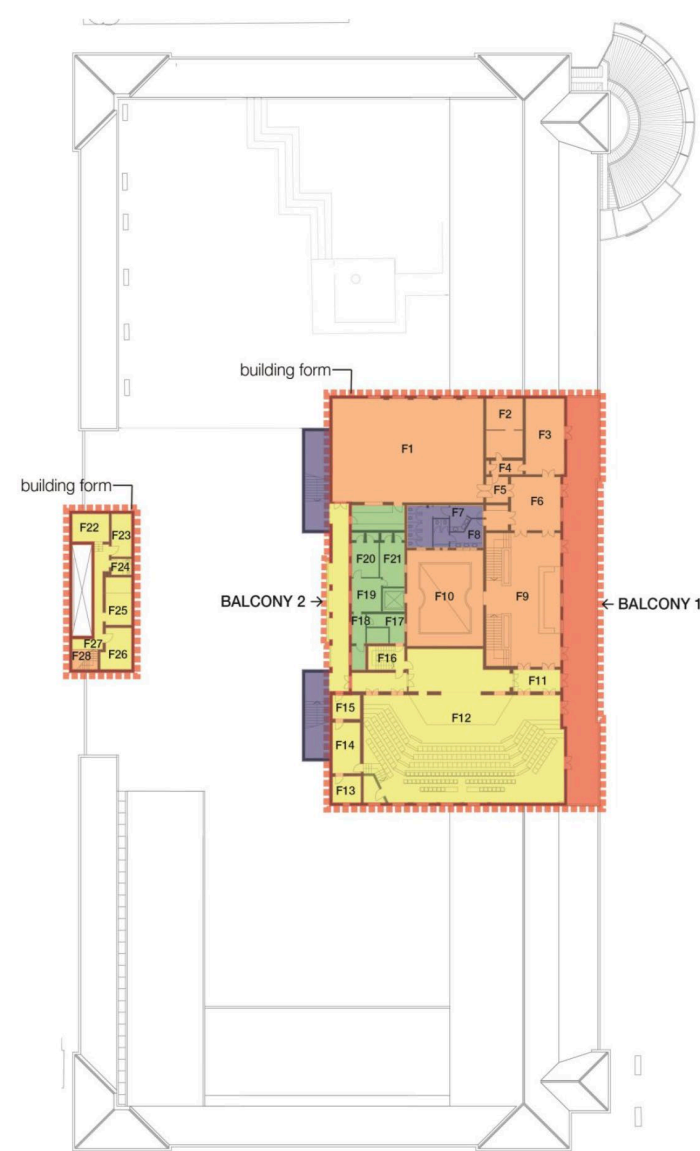




Relative levels of heritage significance of spaces and walls on Ground Floor.

Source: Bondi Pavilion CMP Figure 176, p.171  
TKD Architects.

SIGNIFICANCE LEGEND	
<span style="display:inline-block; width:15px; height:10px; background-color:red; border:1px solid black;"></span>	EXCEPTIONAL
<span style="display:inline-block; width:15px; height:10px; background-color:orange; border:1px solid black;"></span>	HIGH
<span style="display:inline-block; width:15px; height:10px; background-color:yellow; border:1px solid black;"></span>	MODERATE
<span style="display:inline-block; width:15px; height:10px; background-color:green; border:1px solid black;"></span>	LITTLE
<span style="display:inline-block; width:15px; height:10px; background-color:purple; border:1px solid black;"></span>	NEUTRAL
<span style="display:inline-block; width:15px; height:10px; background-color:grey; border:1px solid black;"></span>	INTRUSIVE



Relative levels of heritage significance of spaces and walls on First Floor.

Source: Bondi Pavilion CMP Figure 177, p.172  
TKD Architects.

Spaces that provide insight into the original design intent and functions of the Bondi Pavilion include:

- The ground floor foyer
- The art gallery, which was originally used as a family changing room
- The retail tenancy
- The suite of spaces on the first floor consisting of the Seagull Room, Dolphin Room, Ocean Room and Theatre Bar area

Source: Bondi Pavilion CMP, p.92  
TKD Architects.

Adaptive Re-use is acceptable provided that:

- **Compatible use.**
- **Original fabric and significant spatial features are retained and interpreted.**
- **The external form is retained.**
- **No additions outside the periphery of the building due to impact on the Pavilion, Bondi Park and Bondi Beach cultural landscape.**

Guidelines outlined in the CMP.

Source: Bondi Pavilion CMP, p.177  
TKD Architects.