

Universal Access Study

Waverley Council
Bronte Park
FINAL
June 2017



Document Issue

FINAL
Waverley Council
Bronte Park Universal Access Study

Document Issue

Issue	Date	Prepared by	Reviewed by	Council Contact
DRAFT	14/10/16	Monique Jack & Gemma McDonald	Jen Barling	Bianca Simpson
FINAL	30/06/17	Monique Jack & Gemma McDonald	Jen Barling	Andrew Chau

© funktion 2017
ABN 74 300 234 168
PO Box 1214 Manly NSW 1655
T 02 9011 8128

All Rights Reserved. No material may be reproduced without prior permission.

This report is based on information that was current at the date of issue of the report. Any information arising after this date that may affect the content, is excluded. Funktion has made all reasonable enquiries necessary in preparing this report, however we are not responsible for the completeness of accuracy of information provided to us.

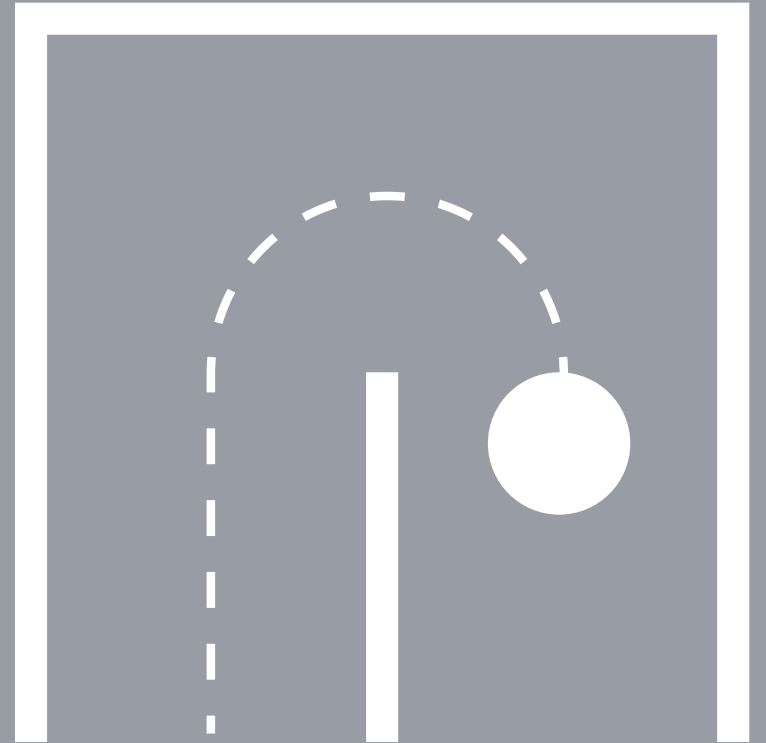


Contents

Contents

4	Background
12	Context for Planning & Design
18	Community Consultation
22	Findings
40	Strategy & Recommendations
57	Action Plan & Prioritisation

01



Background



Background

FINAL

Waverley Council

Bronte Park Universal Access Study

Introduction

Waverley Council are currently updating and developing the Bronte Park Plan of Management, Master Plan and Bronte Road Streetscape Upgrade. Waverley Council engaged funktion to undertake a Universal Access Study as part of this process.

The study area is a highly used space and includes Bronte Park and the key access points to the park; including access from Bayview Street, Bronte Road, Bronte Marine Drive and Bronte Cutting. The study area supports a wide variety of active and passive recreational activities such as swimming, surfing, nippers, beach-goers, walking, jogging, bike riding, picnicking, BBQ-ing, beach viewing and relaxing.

Waverley Council is committed to improving the accessibility of this local area as well as catering for the diverse needs and aspirations of local residents and visitors well into the future. Council aim to improve the connectivity, usability, streetscape, amenity and safety for people of all abilities within the park.

Purpose and Objectives

The purpose of the Universal Access Study is to identify the current level of accessibility of the project area and to develop a strategy with recommendations to assist Council in providing improvements to the level of pedestrian access and amenity for people of all abilities. This will directly inform the Plan of Management and Master Plan for Bronte Park and Bronte Road Streetscape Upgrade.

More specifically, the objectives of the Universal Access Study are to:

- Conduct an access audit and prepare a detailed analysis of existing site conditions of Bronte Park including investigating the provision of accessible parking, pathway networks, amenities, wayfinding and age-friendly design features
- Provide input into stakeholder engagement processes and gather insights relating to access and mobility
- Conduct an access review of Bronte Road Streetscape Upgrade Design
- Provide an access strategy for the proposed masterplan
- Provide a detailed report of main accessibility issues, recommendations, and prioritised actions
- Review and provide comments on the Bronte Masterplan



Background

FINAL

Waverley Council

Bronte Park Universal Access Study



Map of access study area

Scope

The study area encompassed Bronte Park and the access points to the park including access from Bayview Street, Bronte Road, Bronte Marine Drive and Bronte Cutting. The scope of the study included Bronte Village, beach and bath access. Park infrastructure included the bus shelter, playground, seating, lighting, BBQ, picnic facilities and signage. Internal and external building features of toilet amenities at the kiosk and community centre were evaluated however, the Surf Life Saving Club was not included in the scope of the study.

The study scope included the following elements:

- analysis of access to existing facilities [external point of entry only]
- existing path network
- existing accessible parking space arrangements within the park
- pedestrian movement conflicts with the surf lifesaving club
- access points into the park from adjoining streets
- existing signage locations
- wayfinding around the park and to the beach
- barrier treatments around park, baths and cliffs
- pedestrian access in the Cutting shared environment
- existing seating and picnicking



Background

FINAL

Waverley Council

Bronte Park Universal Access Study

Methodology

The universal access study program consisted of the following components:

- Site inspections conducted on the 4th & 6th July 2016
- Access committee meeting/workshop conducted on the 14th July
- Provision of accessibility input into the User Survey [online and intercept interviews]
- Bronte PoM focus group meeting conducted on the 17th August
- Review of Community Consultation Report
- Review of Bronte Rd Streetscape Design
- Review of Bronte Masterplan

Written comments and submissions related to access and mobility were received during the community consultation process and inform the development of the access strategy, from:

- Waverley Access Advisory Committee
- Caring Waverley team
- Disabled Surfers Association of Australia

During the stakeholder workshop (conducted by Straight Talk), 23 representatives attended from the following 14 stakeholder groups:

- BIKEast
- Bronte Beach Precinct
- Bronte Board Riders Club
- Bronte Gully Bushcare Group
- Bronte Kiosk
- Bronte Splashers Swimming
- Bronte Surf Lifesaving Club
- Bronte Swimming Club
- Bronte Waterfall Bushcare Group
- STA Operations Manager [Eastern Suburbs]
- Train Operator
- Waverley Historical Society
- Waverley Police



Background

Study Area

FINAL

Waverley Council

Bronte Park Universal Access Study

Site Appreciation

Bronte Park is a major Sydney attraction located on the Eastern Beaches Coastal Walk. The Coastal Walk extends from South Head to Yarra Bay and brings significant visitation to the area. Waverley Coastal Walk data counted 931,222 people had used the coastal walk at Bronte between May 2015 - April 2016, with Sunday being the busiest day of the week and the 25th April 2016 as the busiest day of the year.

Waverley Council's estimate for beach visitation is 500,000 per annum with 10,000 visitors estimated on the busiest days [Bronte Lifeguards visitor information].

Bronte Park consists of a steep bush gully in the west which opens out eastwards into level grass area and wide beach. The upper gully accommodates informal recreation, along several walking tracks, and two active bush regeneration groups. The beach and grass areas are popular with a wide range of active and passive recreation users.

A shared path section of the coastal cycleway also runs through Bronte Park, between Bayview Street and Bronte Road. Mixed traffic cycle routes on Bronte Road and Cutting connect Bronte Park with Centennial Park and Bondi Junction.

The promenade, located between the grass area and the beach, forms part of The Coastal Walk and is a popular location for casual seating, meeting and beach viewing. The southern end of the promenade can cause confusion for walkers, with one path culminating in a dead end just past the baths, and the Coastal Walk splitting into two paths near the community clubhouse.

The Cutting forms part of the Coastal Walk and also serves as a parking area for visitors to Bronte Park. The Cutting is a designated 10kmph zone and includes a section without footpaths where coastal walkers share the carriageway with traffic.

Important facilities in Bronte Park include;

- Bronte Baths,
- Bronte Surf Lifesaving Club, kiosk and amenities building,
- Bronte Beach Community Centre and amenities building,
- picnic shelters and barbecues,
- miniature train track
- playground
- Heritage bus shelter

The Bronte Surf Lifesaving Club organises regular activities (Daily surf training, surf patrols, and Sunday Nippers training) and special events, (surf carnivals Nippers fun days, the Christmas Scramble, Carols nights, Bondi to Bronte Swim, barbecues, Bronte Biathlon, and fund-raising initiatives).

The Bronte Baths, located at the south end of promenade, are a popular attraction for both organised and casual swimmers. The Baths are accessed by stairway only and were cordoned off due to storm damage at the time of inspection.



Background

Study Area

FINAL

Waverley Council

Bronte Park Universal Access Study



Getting to Bronte Park

There are 8 accessible parking spaces in Bronte Park and the Cutting. 5 are located next to the historic bus shelter near Bronte Road. There is no accessible pathway grade connecting these spaces with the beach and café area, while accessible parking spaces in the cutting are located on a moderate grade.

Buses provide the only direct public transport connection to Bronte Park. The 378/440 accessible bus route from Central to Bronte via Bondi Junction services the main entrance of Bronte Park [south side] from Bronte Rd. A bus terminus for the 378/440 service is located on Bronte Road adjacent the café area.

Bus stops for the 360 accessible service from Bondi Junction to Nth Clovelly are located on Murray Street. While bus stops for the 361 accessible service from Bondi Junction to South Bondi are located on Bronte Marine Drive and Hewlett St. There is currently no accessible path between these stops and the park due to topographical constraints.

Parking and Bus Routes servicing Bronte Park



Background

Study Area

FINAL

Waverley Council

Bronte Park Universal Access Study



Entrances to Bronte Park

Key pedestrian access points to the park include the main entrance in the south at Bronte Road [1,2] and Bronte Cutting [3]; and Bronte Marine Drive [4], Bayview Street [6] and Hewlett Street [9] in the north. A number of entrances also exist in the west of the park through the gully which link to unpaved tracks.

Entrances for bicycles is via the vehicle share way across the park and Bayview Street [6]. This route is formalised by the Waverley Bicycle Network route.

Park entrances range from formal sign posted access ways to informal tracks. These include steps, step free access, kerb ramps, sloping concrete paths, informal dirt and grass tracks, shared vehicle and bike accessways. Entrances in the north predominantly consist of steps or are linked to steep pathways which are not accessible. Entrances in the south provide more accessible options.

The primary service vehicle access point is located on Bronte Road. A secondary service vehicle access point is located adjacent to a pedestrian access point 6 on Bronte Marine Drive.

Entrances to Bronte Park



Background

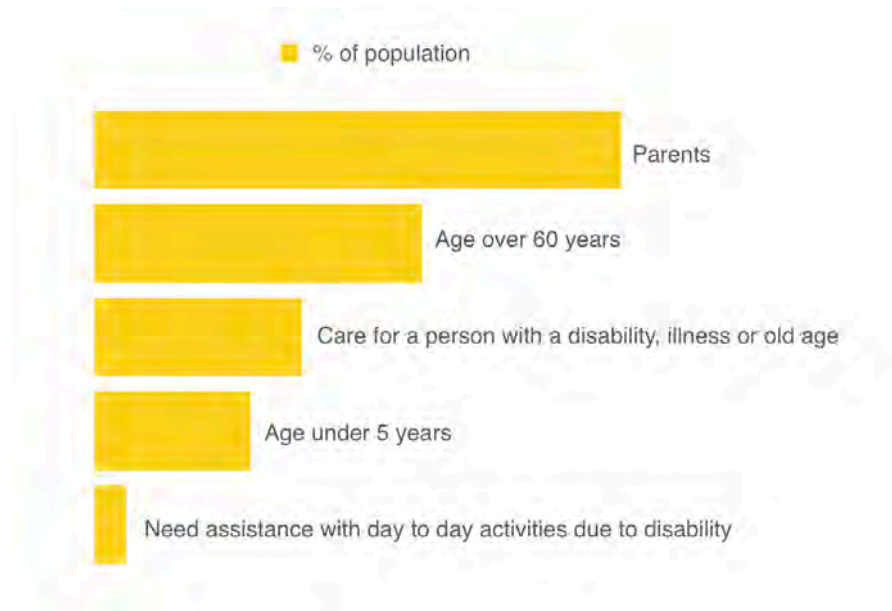
Study Area

FINAL

Waverley Council

Bronte Park Universal Access Study

Bronte Community Profile



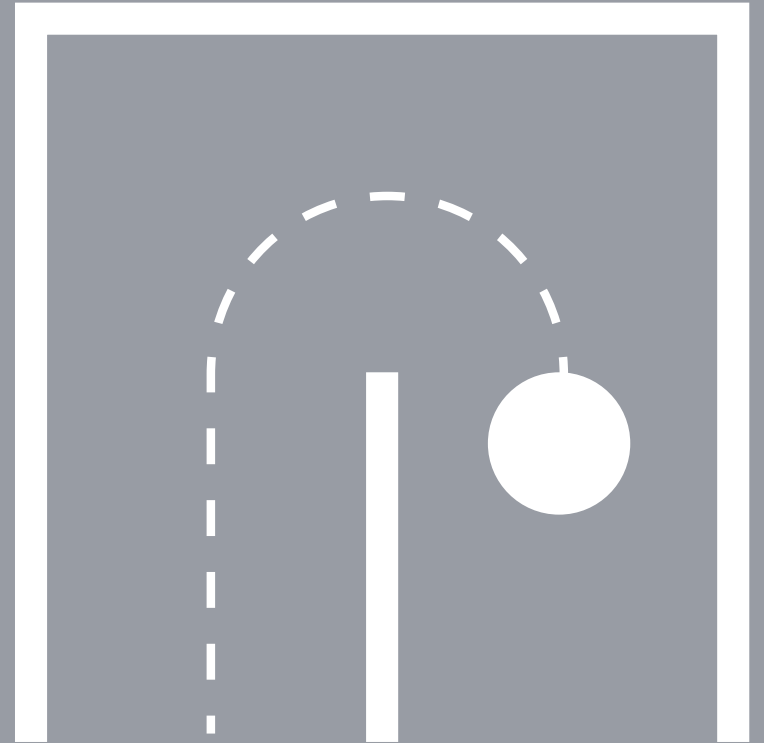
Bronte Community Profile

The Census usual resident population of Bronte in 2011 was 6,671, living in 3,000 dwellings, with an average household size of 2.42. The ABS estimated the resident population would be 7,558 in 2015.

Bronte's community profile in 2011 included the following key user groups relating to access and mobility:

- 16.1% of the population aged over 60 years
- 1.6% of residents reported needing help in their day to day lives due to disability
- 10.2% provided unpaid assistance to a person with a disability, long term illness or old age
- 7.7% of the population were under 5 years of age
- 25.9% of residents were parents

02



Context for Planning & Design



Context for Planning & Design

Principles of Universal Access

FINAL

Waverley Council

Bronte Park Universal Access Study



Principles of Universal Access

adapted from Easy Access to Historic Landscapes 2005, English Heritage

Universal Access

Universal Access in the built environment takes into account the needs of a wide range of community members so that each visitor has an equally satisfying experience. It creates inclusive places and spaces that embrace diversity and deliver design solutions that benefit as many people as possible.

Design of urban landscapes can enhance or reduce usability, mobility, safety, comfort, choice, security and belonging. Design is all around us and has a strong influence on the quality of people's lives. When the needs of a diverse population are considered, design can remove real and imagined barriers between communities and promote independence, participation and quality of life.

Integration of universal access into strategic planning and design anticipates the diverse needs and aspirations of local residents and visitors well into the future. The result is better environments that are sustainable and inclusive for everyone.



Documents Reviewed

The following documents were reviewed for this report:

- Bronte Park PoM 2005
- Bondi PoM 2014
- Waverley Development Control Plan 2012
- Access and Mobility Policy and Action Plan 2011-2015
- Bronte Park Topographic Maps
- STA Bus Route Services
- Coastal Walks – Bondi to Bronte
- Green Links 3 Brochure
- Bicycle Network Map
- Waverley Bike Plan 2013 – Route 5
- Walking Waverley Woollahra
- Waverley Public Domain Guidelines 2015
- Waverley Schematic Signage Strategy 2015
- Bronte Park User Survey 2016
- Draft Bronte Park and Beach Plan of Management 2017 [section 6 – Master Plan and Action Plan]

Overview of Design Requirements

While there are no mandatory accessible design requirements that govern all aspects of outdoor areas, the following documents provide various specifications that can be applied to built elements in the outdoor environment. To incorporate universal access and more closely align with the intent of the DDA, design requirements in this review are based on the access provisions and guidelines in the following documents:

- DDA – Disability Discrimination Act (1992)
- Access to Premises Standards (2011)
- BCA - Building Code of Australia (2016)
- AS1428.1 (2009) Design for Access and Mobility
- AS1428.2 (1992) Design for Access and Mobility
- AS1428.4.1 (2009) Design for Access and Mobility
- ASNZ 2890.6 (2009) Parking facilities: Off-street parking for people with disabilities
- Disability Standards for Accessible Public Transport (2010)
- Austroads Part 13 – Road Environment Safety (2015)
- Australian Human Rights Commission Guideline on the Application of the Premises Standards (2013)
- Australian Human Rights Commission Advisory Note on streetscape, public outdoor areas, fixtures and furniture (2013)
- Disability Standards for Accessible Public Transport Guidelines (2004)



Context for Planning & Design

Legislation

FINAL

Waverley Council

Bronte Park Universal Access Study

DDA - Disability Discrimination Act

The objectives of the Disability Discrimination Act 1992 (DDA) – section 23, focus on the provision of equitable, independent and dignified access to services and facilities for people with mobility, sensory and cognitive disabilities.

The DDA covers existing premises, including heritage buildings, those under construction and future premises. It extends beyond the building itself to include outdoor spaces and within, to address furniture, fittings and practices.

This means delivering equality, dignity and independence to people with a range of abilities inclusive of:

- People with sensory impairments
- People with mobility impairments - wheelchair users and people who have ambulatory disabilities
- People with dexterity impairments
- People with cognitive impairments

Access to Premises Standards

Disability (Access to Premises - Buildings) Standard 2010 which commenced on 01 May 2011, has been incorporated into the BCA to ensure that access provisions for people with disabilities more fully meet the intent of the DDA.

Meeting the Premises Standards ensures fulfilment of obligations under the Disability Discrimination Act in relation to physical access within buildings. The following standards are referenced in the Access Code:

- AS1428.1 2009 Design for Access and Mobility General Requirements for Access
- AS1428.4.1 2009 Means to assist the orientation of people with vision impairment – Tactile Ground Surface Indicators
- AS1735 Lifts Escalators and Moving Walks
- AS/NZS 2890.6 2009 Parking Facilities – Off street Parking

BCA – Building Code of Australia

The Building Code of Australia (BCA) (2016) applies to new buildings and existing buildings that undergo refurbishment, generally measured against the Deemed-to-Satisfy Provisions and Performance Requirements of the BCA Parts D3, E3.6 and F2.4.

Part D3 Access for People with Disabilities outlines the general building access requirements, and includes the relevant parts to meet the deemed to satisfy provisions to satisfy the performance requirements.

Part E3.6 covers passenger lifts and F2.4 relates to the provision of sanitary facilities, including accessible facilities and facilities suitable for people with an ambulant disability.



Context for Planning & Design

Australian Standards

FINAL

Waverley Council

Bronte Park Universal Access Study

AS 1428 - Standards for Access

The Australian Standards design for access and mobility are a suite of standards relating to the inclusion of features in the built environment that improve access and mobility for people with a disability.

AS1428.1 (2009) sets out minimum requirements for design of buildings and facilities, while AS1428.2 includes enhanced and additional requirements that are not covered in AS1428.1, such as street furniture and reach ranges.

AS1428.4.1 (2009) Design for access and mobility Part 4.1: Means to assist the orientation of people with vision impairment primarily details the requirements for the application of tactile ground surface indicators (TGSIs).

AS2890.6 (2009) details the minimum design requirements for the provision of off-street parking facilities for people with disabilities.

DSAPT - Transport Standards

The Disability Standards for Accessible Public Transport (DSAPT) (2010) set out standards for public transport services and infrastructure to achieve minimum levels of accessibility for the following elements:

- Access paths;
- Manoeuvring Areas;
- Passing Areas;
- Resting Points;
- Ramps & Stairs;
- Waiting Areas;
- Boarding;
- Allocated space;
- Surfaces;
- Handrails and grabrails;
- Lifts
- Signs & Symbols;
- Alarms, Lighting & Controls;
- Tactile Ground Surface Indicators
- Furniture and fitments;
- Street furniture;
- Gateways

Austroads Safe Road Environment

Guide to Traffic Management Part 13: Road Environment Safety (2015) is concerned with traffic management practice under the Safe System philosophy.

It defines a safe road environment and the broad approaches for achieving it. It outlines basic human factors as related to users of the road and traffic environment, and how these can be influenced by road design and traffic management practice.

The Guide emphasises the need for the road system to provide an environment which assists road users to behave effectively and safely. It considers the role of traffic management in influencing road user behavior.



Context for Planning & Design Guidelines

FINAL

Waverley Council

Bronte Park Universal Access Study

Access to Premises Guideline

The Guideline on the Application of the Premises Standards 2013 was developed by the Australian Human Rights Commission to assist building professionals and those concerned with access to better understand how the Disability (Access to Premises – buildings) Standards 2010 (Premises Standards) apply to new and upgraded public buildings.

It aims to help fulfill the purpose of the Premises Standards which is to ensure that dignified, equitable, cost-effective and reasonably achievable access to buildings, and facilities and services within buildings, is provided for people with disability; and to give certainty to building certifiers, developers and managers that if the Standards are complied with they cannot be subject to a successful complaint under the DDA in relation to those matters covered by the Premises Standards.

Public Outdoor Areas Guideline

The Australian Human Rights Commission Advisory Note 2013 on streetscape, public outdoor areas, fixtures and furniture was developed to assist those responsible for premises who are seeking to improve access on matters not covered by the Premises Standards.

Infrastructure such as public footpaths, outdoor areas such as parks and playgrounds, landscaping and road crossings are not covered by the Premises Standards.

Those access issues not addressed in the Premises Standards continue to be subject to possible discrimination complaints by people with disability if they experience an access barrier. The advisory note assists people to understand their already existing responsibilities and rights under the DDA and to assist in identifying areas of possible discrimination complaint.

DSAPT Guidelines

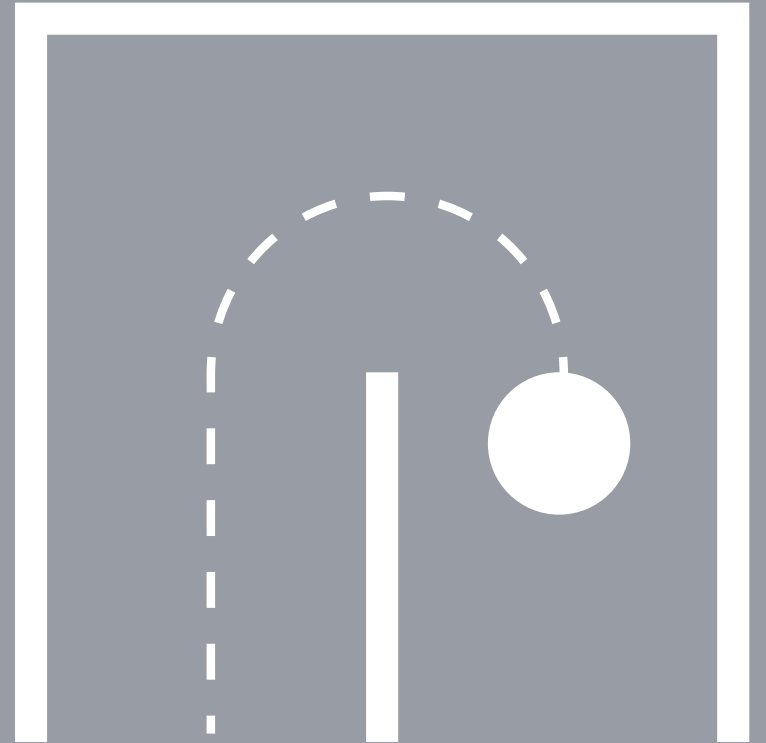
The purpose of the Disability Standards for Accessible Public Transport Guidelines 2004 is to provide information and comment about the Disability Standards for Accessible Public Transport.

The Disability Standards for Accessible Public Transport (DSAPT) specify how public transport is to be made accessible.

The purpose of the Disability Standards for Accessible Public Transport is to remove discrimination on the basis of disability from public transport services over a specified period of time.

This Guideline aims to assist in understanding and interpreting the Disability Standards for Accessible Public Transport.

03



**Community
Consultation**

Community Feedback

Listening to People's Experiences

Distances are too great for elderly people to walk. There are too many steps for my knees.

It is difficult to know what path to take when we take the pram.

Accessible parking is difficult to use due to the grade and traffic flow

At the Cutting and cafes, pedestrians are given lower priority than a car. Why are 10 parked cars given priority over hundreds of pedestrians?

Paths are in a poor condition. They are indirect to the park. Paths aren't wide enough for pedestrians, surfboards, cyclists & wheelchairs



Above is a selection of comments submitted to Waverly Council during the Stakeholder Consultation



Community Consultation

Findings Relevant to Universal Access

FINAL

Waverley Council

Bronte Park Universal Access Study

Journey and Arrival

Straight Talk was engaged by Waverley Council to consult key stakeholders and park users in July and August 2016. Information gathered included user profiles, park usage patterns, levels of satisfaction with the park and its facilities, aspirations and expectations for future upgrades and developments. Key themes and findings related to universal access are summarised below.

Journey and Arrival

- The majority of park users walked to the park.
- More people drove than caught the bus or cycled to the park.
- Accessible parking in the Cutting was difficult to use due to the grade and traffic flow. Additional accessible parking spaces were requested near an accessible park entrance.
- Visitors using the baths prefer to use the Cutting parking rather than the accessible parking located beside the bus shelter.
- A drop off and pick up area for wheelchair taxis and community service vehicles is needed
- Parking was requested for a community mini bus/service vehicle to assist community services who frequently visit the park.
- Parking time restrictions impact use of the park and the length of stay. Activities park users wish to engage in can take longer than parking time restrictions allow e.g. swimming club.

- Safety concerns were raised for pedestrians walking through the Cutting due to conflict between traffic flow, parking and pedestrians walking on the road. A continuous dedicated pedestrian walkway was requested through the Cutting, linking the park and the coastal walk.
- Visitors feel unsafe crossing Bronte Road near Nelson Ave due to the speed of traffic.
- The grade of the entrance near the Bronte Rd bus stop is too steep.
- No bike racks were available but were seen as needed.
- Location of the Bronte Road pedestrian crossing in front of the bus bay exit raised safety concerns.
- Safety concerns were also noted regarding the movement of pedestrians on Bronte Road near bus bay and car park entrances.
- The majority of park users surveyed, enter and exit the park using the southern access points. The most popular access points used are on Bronte Road located near the bus stop [1] and Cutting car park entrances [2,3].
- The entrance used most in the north is on Bronte Marine Drive [4].
- Access points in the gully are used to a lesser extent, with the formal stairways on Bronte Road [12,15] being the most likely to be used.
- Some north entrance slopes and steps were difficult for older visitors and people with prams to use.



Community Consultation

Findings Relevant to Universal Access

FINAL

Waverley Council

Bronte Park Universal Access Study

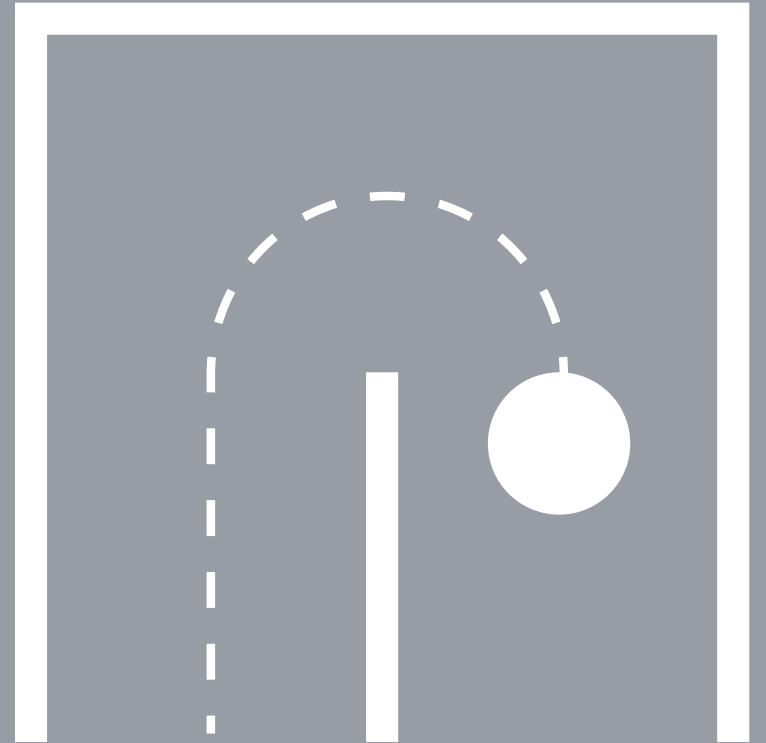
Moving Through the Area

- Key pathways in the park need to be wider and better maintained whilst keeping the informal and natural style of the park where possible. Key pathways are not wide enough for prams, wheelchairs and bicycles to pass.
- Pathways around the cafes are too narrow.
- Key pathways do not link entrances directly to the park facilities.
- Coastal walk stairs at the northern end of the beach were difficult to use.
- Older visitors noted the distance from picnic areas to park amenities is too long.
- Visitors with prams found it difficult to identify a step free path. Visitors had difficulty finding the coastal path at the south end of the park.
- There is inadequate wheelchair access.
- Safety issues were identified due to vehicle-pedestrian conflict outside the surf club and the park storage area.
- Bike traffic is not catered for in path design.

Onsite Experience

- Walking and swimming are the most common activities in the park.
- There are insufficient seats on the promenade.
- More shade is needed throughout the park.
- Lighting in the park is inadequate, particularly around the pool and kiosk.
- Bathroom lighting is inadequate.
- Some visitors have difficulty accessing the baths and bogey hole due to uneven stairs, slippery stairs and rails.
- The beach access ramp needs to be closer to the south end of the beach and the bogey hole.
- Surf club access needs to be improved.
- Consider providing storage for a beach wheelchair with independent access.
- The kiosk and BBQs are not accessible.
- Provide a spectator space for wheelchair users at the playground.

04



Findings



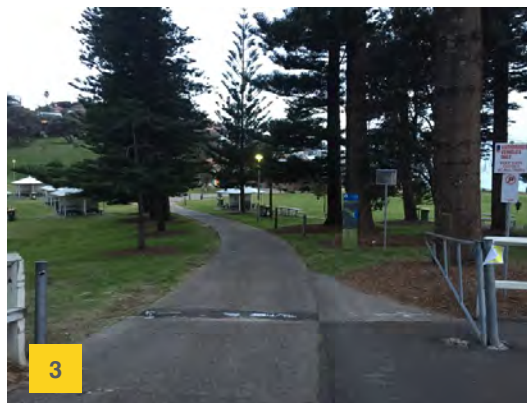
Findings

Car Parking

FINAL

Waverley Council

Bronte Park Universal Access Study



1 + 2 Accessible Parking

- Accessible parking area not highly visible
- No signage to indicate location of accessible parking bays
- Grade of parking space too steep 1:10
- Gradient of linking pathways too steep for independent access

3 Vehicle Access Point

- Gradient of linking pathway from accessible parking area too steep
- Linking pathway is shared with vehicle access
- Speed bumps impede level path of travel

4 Accessible Parking

- Accessible parking bay size narrow and located on blind corner

5 + 6 Accessible Parking

- Accessible parking bay size narrow
- Gradient & cross fall of parking spaces not level
- No kerb ramp adjacent to 2nd parking space creates pedestrian/vehicle conflict
- Speed bump adjacent accessible parking bays impedes access to kerb ramp



Findings

Transport Links

FINAL

Waverley Council

Bronte Park Universal Access Study

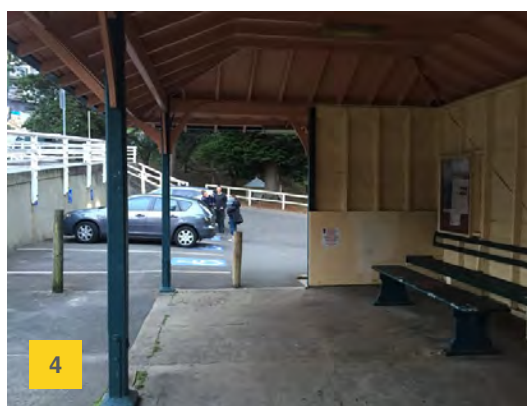


1 Bronte Rd Bus Terminus

- Linking pathway to park is obstructed by outdoor dining area & width too narrow
- Not in close proximity to park entrance and on opposite side of road

2 Bronte Rd Bus Stop Boarding Point

- Insufficient manoeuvring area at boarding point
- Allocated wheelchair space located next to garbage bin

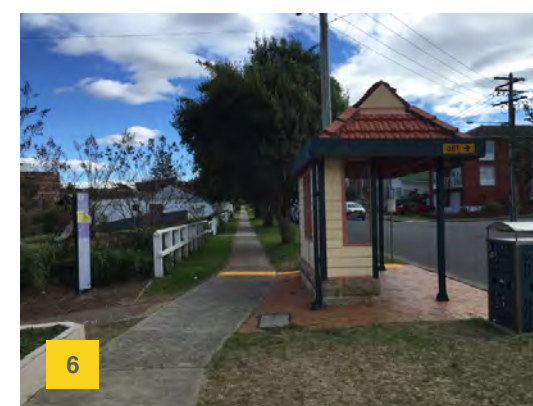


3 Linking Pathway to Bus Shelter

- Gradient too steep 1:12
- Uneven ground surfaces

4 Bronte Rd Bus Shelter

- Ground surface uneven
- Linking stairway non-compliant
- Seating arrangement limits access to seating with armrests



5 Bronte Marine Parade Bus Stop

- No TGSIs at boarding point
- Linking access routes are not accessible due to stairways & narrow path width 780 mm, gradient of pathway 1:11
- Kerb ramp grade too steep 1:6

6 Hewlett St Bus Stop

- No accessible pathway link to Bronte park



Findings

Pedestrian Crossings

FINAL

Waverley Council

Bronte Park Universal Access Study



1 Pedestrian Crossing - Pacific St

- No designated pedestrian crossing where pedestrians frequently cross the road

2 Pedestrian Crossing - Bronte Cutting [lower]

- No designated pedestrian road crossing across Bronte Cutting to park



3 Pedestrian Crossing - Bronte Rd

- No TGSIs either side of driveway indicating vehicle carriageway

4 Pedestrian Crossing - Bronte Rd

- Blended kerb insufficient and no designated pedestrian crossing at high traffic area ie. vehicle/bus/bike/pedestrian



5 Pedestrian Crossing - Bronte Rd

- Kerb ramp grade too steep 1:6
- Insufficient top landing of kerb ramp
- Pedestrian crossing has undulating cross fall 1:20



6 Pedestrian Crossing - Bayview St

- No kerb ramp link
- No designated pedestrian path provided



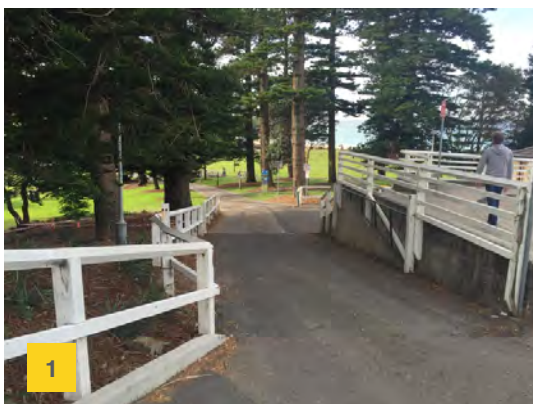
Findings

Arrival Points

FINAL

Waverley Council

Bronte Park Universal Access Study



1 Vehicle Access Point Bronte Rd

- No signage or delineation to indicate shared bike/vehicle/bus/pedestrian access
- Steep grade 1:6 & uneven surfaces
- No access when gate locked

2 Arrival Point - Bronte Rd

- Primary Entry Pt not accessible; grade 1:6
- Insufficient colour contrast of bollard

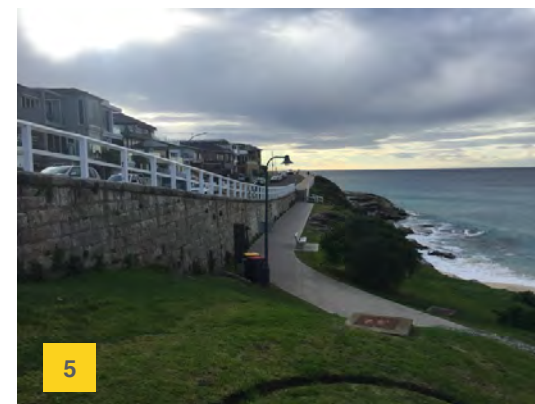


3 Arrival Point - Bronte Cutting

- Insufficient space at top landing of kerb ramp

4 Arrival Point - Bronte Cutting

- No signage to identify Coastal Walk
- Stairway not compliant due to uneven stair risers & insufficient handrails
- Narrow stairway for high pedestrian traffic
- Alternative step-free path too narrow



5 Arrival Point - Bronte Marine Parade

- No accessible link to north side of Park

6 Arrival Point - Bayview St

- Only step-free accessway into Park from Northern side
- No continuous pathway link to Coastal walk
- Pathway not accessible due to steep gradient 1:10



Findings

Arrival Points continued

FINAL

Waverley Council

Bronte Park Universal Access Study



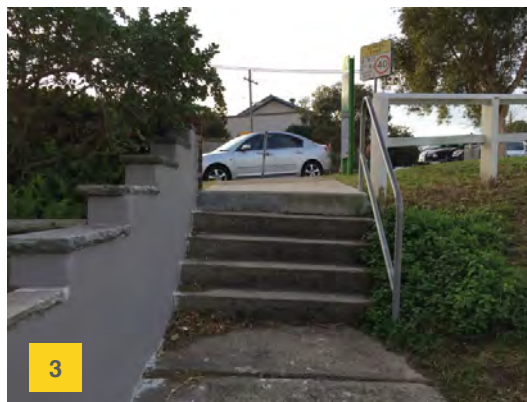
1 Ramp + Stairway – Hewlett & Murray St

- Alternate step-free access provided
- Steep 1:6 grade; handrail not continuous
- Stairway uneven risers, surfaces and edges



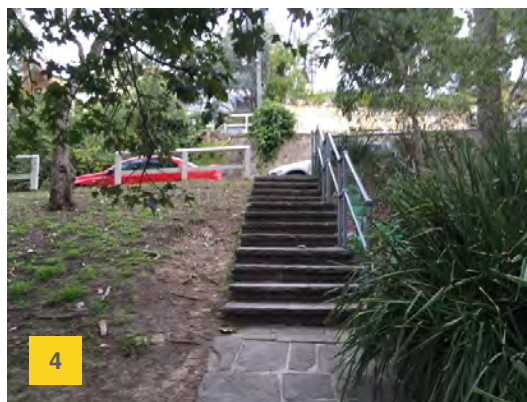
2 Arrival Point – Murray St

- Uneven surface and no signage provided



3 Arrival Point - Murray St

- Steep topography, no accessible link
- Stairway uneven risers and angled treads



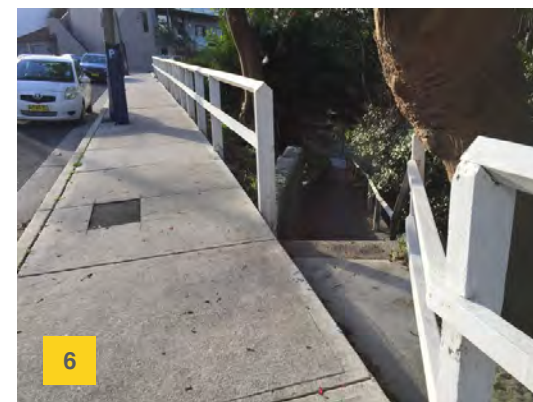
4 Arrival Point – Bronte Rd West

- Steep topography, no accessible link
- Stairway uneven cracked surfaces and overhanging treads; handrail not on both sides



5 Arrival Point - Bronte Rd

- Steep topography, no accessible link
- Stairway uneven surfaces, risers and treads; insufficient handrail ends



6 Arrival Point – Bronte Rd

- Uneven stair risers, treads and diagonal top step; retaining wall on angle



Findings

Pathways | South Side

FINAL

Waverley Council

Bronte Park Universal Access Study



1 Access Route - Pacific St

- No delineated pathway, kerb ramps or pedestrian crossing on key access route to café area

2 Access Route - Bronte Village

- Narrow path with insufficient passing space
- Inconsistent shoreline due to outdoor dining area and kerb side street furniture



3 Access Route - Vehicle Access

- No signage or delineation to indicate shared path with bike route & service vehicles
- Uneven and cracked ground surfaces
- Poor lighting along pathway

4 Access Route - to Promenade

- Pathway grades approx. 1:13; cross fall 1:10
- No passing spaces along path



5 Access Route - to Bronte Baths

- Grade not accessible 1: 9 - 1:16 and no landings or passing spaces provided
- Lack of signage at key decision points

6 Access Route - Bronte Cutting

- Pedestrian/vehicle conflict; no designated pedestrian pathway provided
- No signage or markings to indicate shared way
- No kerb ramp to enter shared way



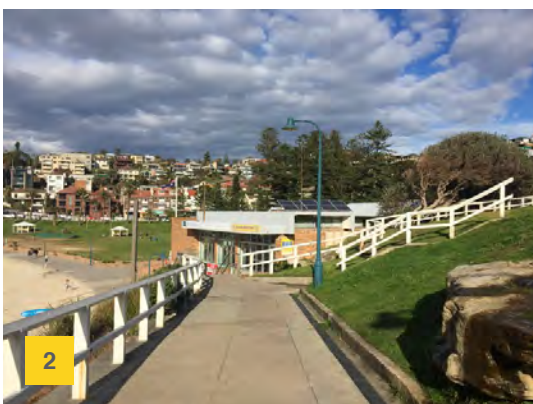
Findings

Pathways | North Side

FINAL

Waverley Council

Bronte Park Universal Access Study



1 + 2 Upper Promenade

- No accessible path of travel into park from Bronte Marine Drive
- No direct step-free access from upper promenade to beach level promenade
- No accessible viewing area on North side

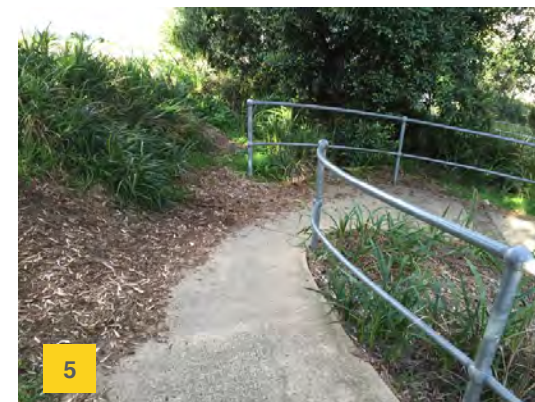


3 Access Route - Bronte Marine Drive

- Narrow, uneven & steep pathway 1:11
- No continuous pathway linking step-free pathway on North side of park

4 Access Route - Bayview St

- Vehicle/Pedestrian conflict; no pathway provided along Bayview St
- Clear desire line



5 Access Route - from Hewlett St

- Access is step-free but ramp not accessible
- Steep grade 1:6, handrails one side and not continuous

6 Access Route - Shared way

- Step free access to park is provided but not accessible; steep grade 1:8
- Pedestrian/bike conflict; pathway not marked adequately, too narrow and low lighting



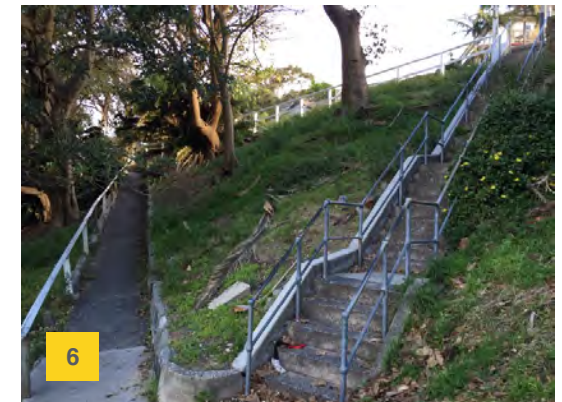
Findings

Pathways | West Side

FINAL

Waverley Council

Bronte Park Universal Access Study



1 + 2 Access Route - The Gully

- Gully pathways lead to bushwalking & dog walking areas
- Pathways are unsealed, uneven and not accessible
- Raised drain on path is a potential trip hazard

3 + 4 Access Route - Gully stairways

- Area not accessible due to topography
- Heritage style stairways uneven, cracked surfaces; risers vary in height; overhanging treads
- Handrails are not provided or are only on one side of stairways

5 Access Route - from Murray St

- No accessible path of travel
- Pathways are unsealed and have uneven surfaces

6 Access Route - from Bronte Rd

- No accessible path of travel
- Steep pathway fall with angled step at top of path



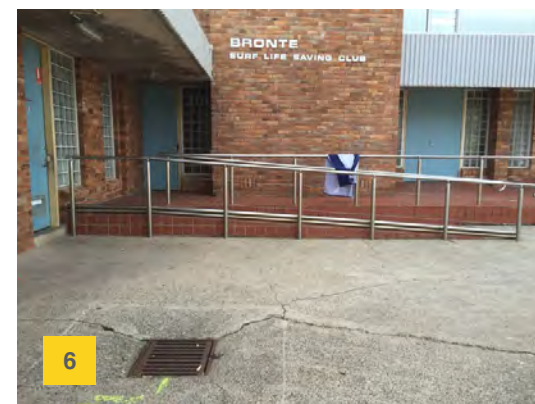
Findings

Pathways | Surfaces

FINAL

Waverley Council

Bronte Park Universal Access Study



1 + 2 Uneven Surfaces

- Lifting surface edges
- Service pit abutments with surrounding surfaces create a trip hazard

3 + 4 Shared Use Pathways

- Cracked and uneven surfaces
- Low contrast, cracked & uneven surfaces on speed bumps
- No gap in speed bump for mobility device to pass

5 + 6 Pathways around Kiosk & Surf Club

- Uneven & cracked surfaces in high traffic areas
- Undulating surface around grate and gaps in grate too wide



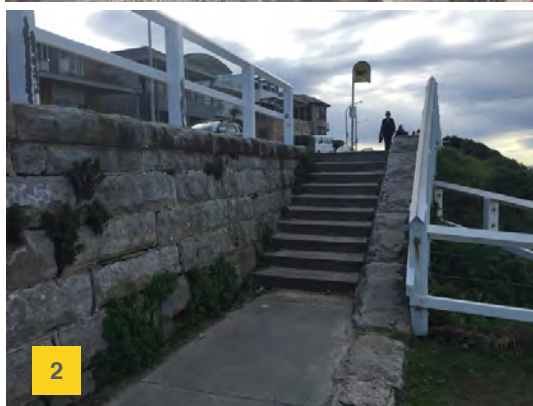
Findings

Stairways

FINAL

Waverley Council

Bronte Park Universal Access Study

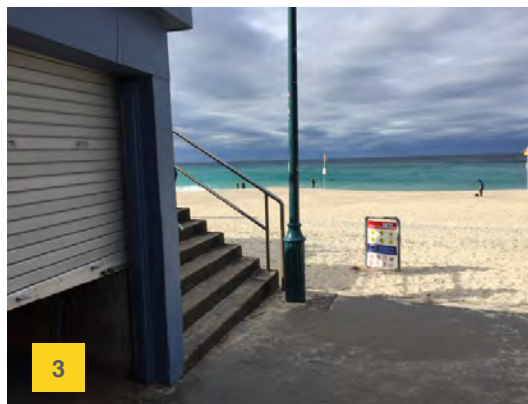


1 Stairways - Bronte Rd

- Narrow stairs in high traffic area leads to bottlenecks and congestion
- Uneven stair risers, treads & surfaces
- Overhanging vegetation

2 Stairways - Bronte Marine Drive

- No handrails, step nosing strips or TGSIs

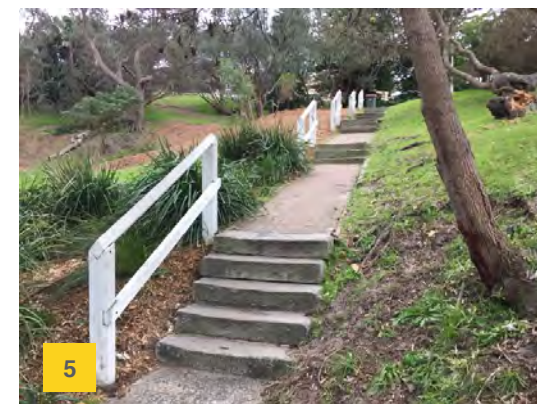


3 Stairway - Promenade

- Tapered stairways
- Pedestrian/vehicle conflict & poor line of sight at base of stairs in high pedestrian traffic area
- Light pole obstructs access to stairway

4 Stairway - to Playground

- Heritage steps worn, uneven tread & angled
- Handrails not continuous or on both sides



5 + 6 Stairways - to Playground

- Uneven stair risers, treads & surfaces
- Handrails not on both sides, not continuous and not compliant
- No step nosing strips or TGSIs



Findings

Street Furniture

FINAL

Waverley Council

Bronte Park Universal Access Study



1 Seating - Promenade

- No wheelchair allocated space provided next to seating

2 Seating

- No linking pathways to seating
- No wheelchair allocated space next to seating



3 Picnic Tables

- No linking pathways to tables

4 Picnic Shelters

- No linking pathway to shelter
- Table/seating no underside footplate clearance
- No wheelchair allocated space under shelter



5 BBQ Facilities

- No linking pathway to BBQs
- BBQ design not accessible



6 Water Fountain

- No level landing to access drinking fountain



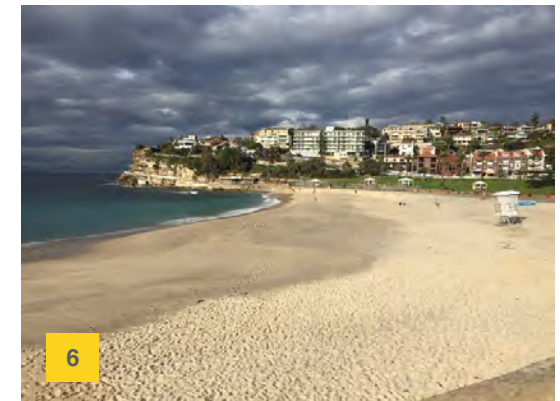
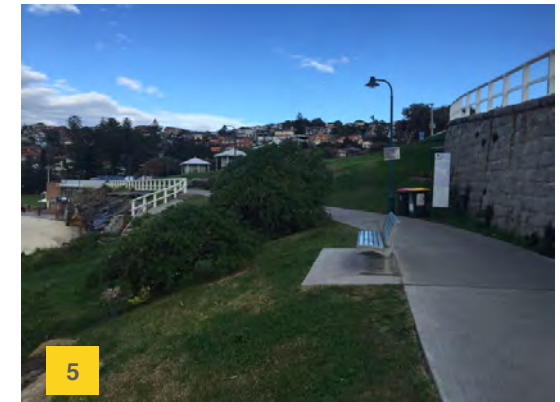
Findings

Viewing Areas

FINAL

Waverley Council

Bronte Park Universal Access Study



1 + 2 Viewing Area - Bronte Baths

- Step-free access to viewing area
- Uneven & damaged ground surfaces
- Pathway grade 1:14 with no landings or passing spaces
- Handrail on one side and no kerb rail provided

3 + 4 Viewing Area - Clubhouse Roof

- Step-free access to viewing area
- Pathway grade 1:14 with no landings or passing space provided
- Handrail on one side only and no kerb rail provided

5 + 6 Viewing Area - Upper Promenade

- No accessible path to viewing area
- Stair access to viewing area only



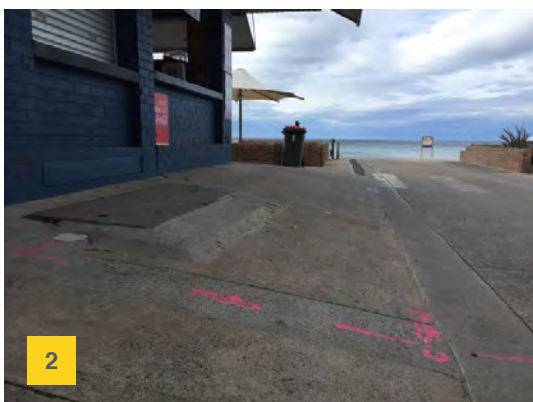
Findings

Building Facilities

FINAL

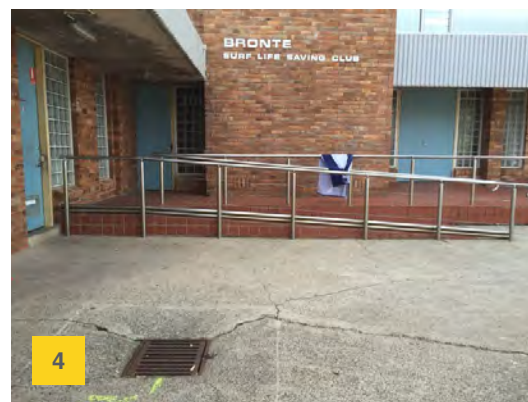
Waverley Council

Bronte Park Universal Access Study



1 + 2 Kiosk

- Uneven ground surface
- Undulating grade of serving area; grade 1:7
- Vehicle/pedestrian conflict as visitors queue across shared pathway
- Pedestrian crossing markings faded
- No level landing at counter
- Accessible counter height not provided

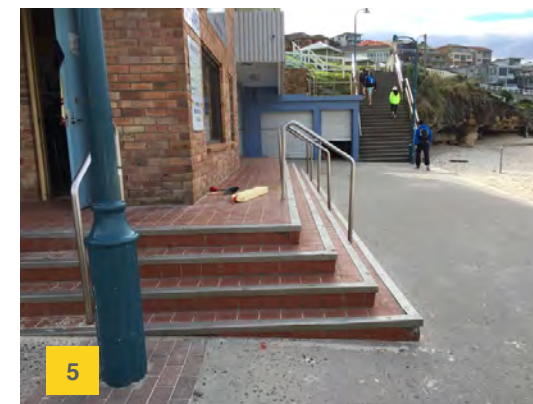


3 Courtyard

- Seating & shelter area not accessible
- No handrails, step nosing strips or TGSIs on stairs

4 Ramp - Surf Lifesaving Club

- Insufficient circulation space at top landing of ramp
- Pathway to life guard area has a steep cross fall 1:10



5 Stairway - Surf Lifesaving Club

- Design of steps unsafe with tapered edges
- Insufficient handrails & no TGSIs

6 Community Clubhouse

- No accessible entrance to clubhouse or toilet facilities
- No provision for accessible toilets or showers



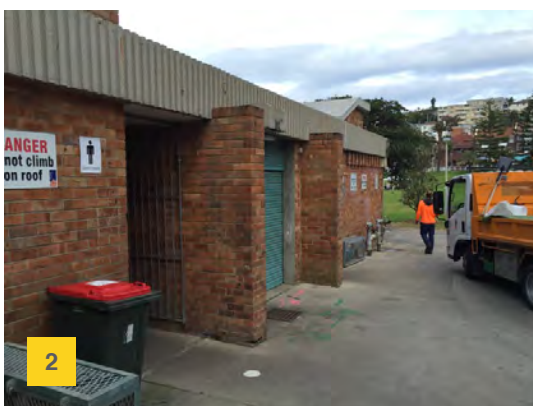
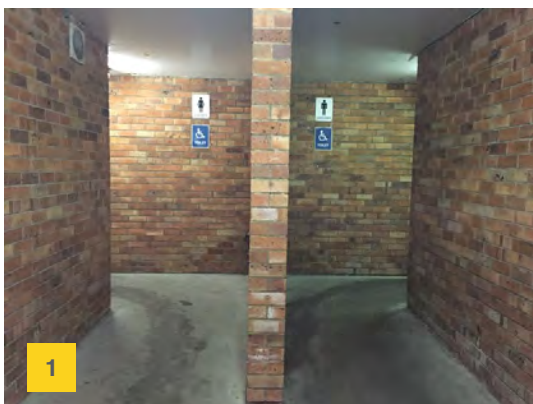
Findings

Toilet Facilities

FINAL

Waverley Council

Bronte Park Universal Access Study

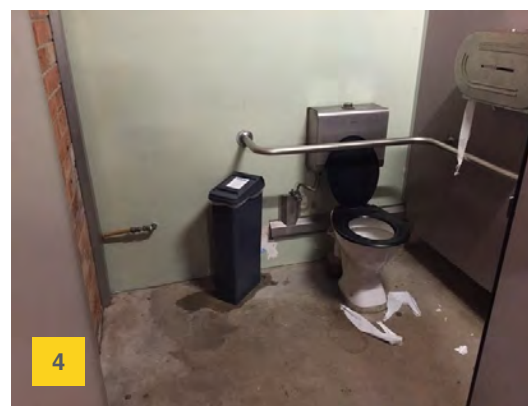
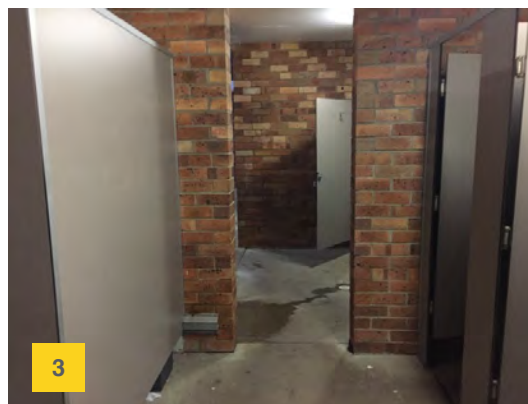


1 Entrance - Beach side

- Uneven and undulating ground surfaces outside toilet entrances 1:20
- Insufficient toilet signage – too small

2 Entrance

- Insufficient door and & corridor circulation spaces
- Vehicle/pedestrian conflict area outside toilet

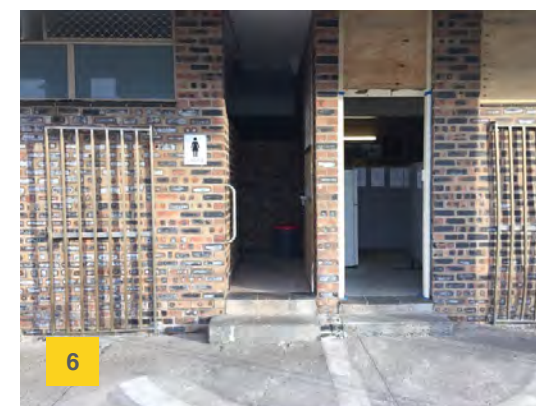
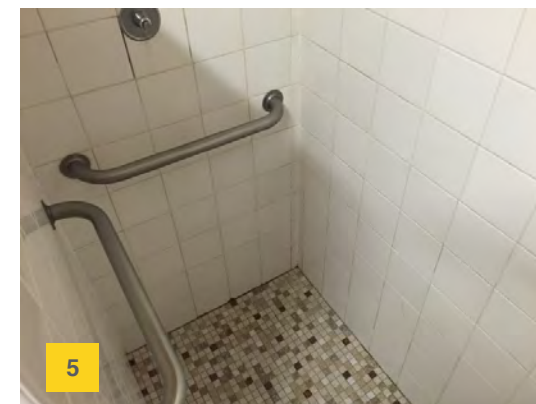


3 Internal Access

- Insufficient door and & corridor circulation spaces
- Cubicle doors too narrow

4 Accessible Toilets [Male + Female]

- Insufficient circulation space in front of pan
- Insufficient grabrail and toilet roll holder placement



5 Shower Facilities

- No designated accessible shower facilities in male or female toilets

6 Community Clubhouse Facilities

- No accessible toilet or shower facilities provided
- No accessible entry due to level change, narrow door and insufficient corridor width



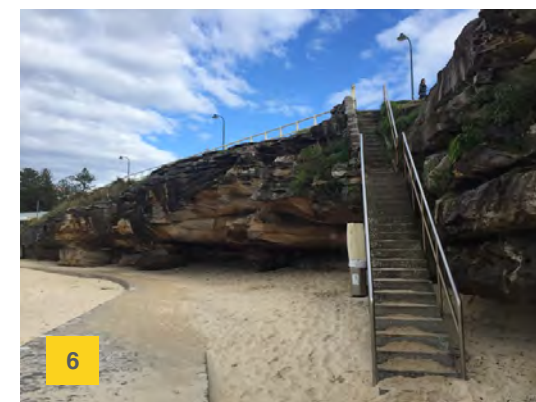
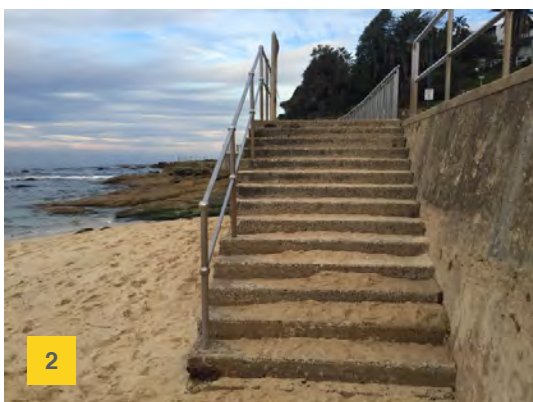
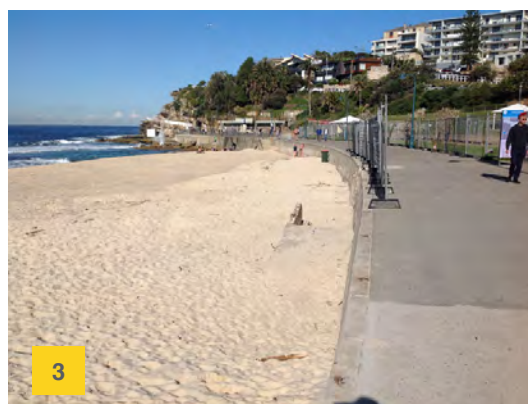
Findings

Beach Access

FINAL

Waverley Council

Bronte Park Universal Access Study



1 + 2 Beach Access Point - south end

- Uneven surfaces
- Balustrade does not provide kerb rails
- Insufficient handrails, not on both sides
- No step nosing strips or TGSIs

3 Beach Access Point - damaged ramp

- Ramp damaged by recent storm
- Promenade has 1:15 - 1:33 fall towards beach

4 Beach Access Point - kiosk

- No handrails or balustrade provided
- No step nosing strips or TGSIs

5 Beach Access Point - SLSC

- Accessible access point to beach conflicts with boat access & is located in high pedestrian traffic area

6 Beach Access Point - north end

- Uneven step risers, treads & surfaces
- Insufficient handrails, no step nosing strips



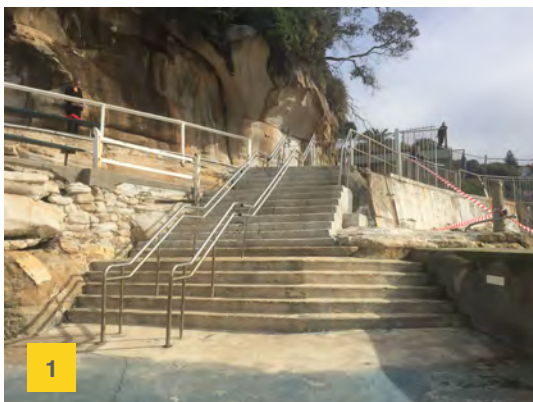
Findings

Bronte Baths

FINAL

Waverley Council

Bronte Park Universal Access Study

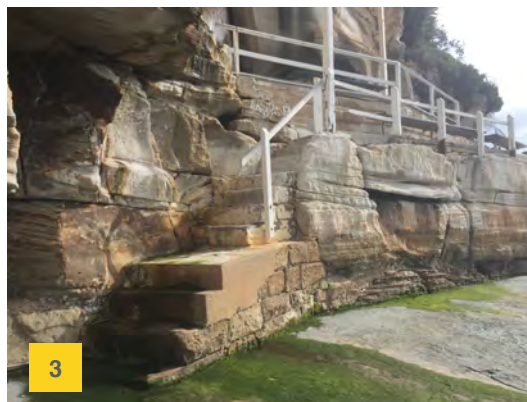


1 Primary Pool Access

- No accessible entry to the baths
- Stairway can be slippery
- Uneven surfaces, step risers & treads
- No TGSIs or contrast strips on step nosings

2 Ocean Access

- Balustrade to ocean stairway is damaged

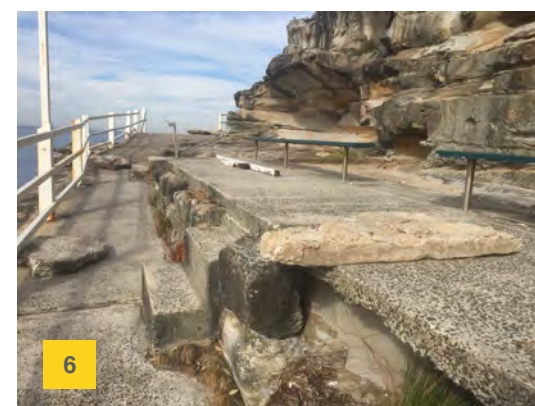
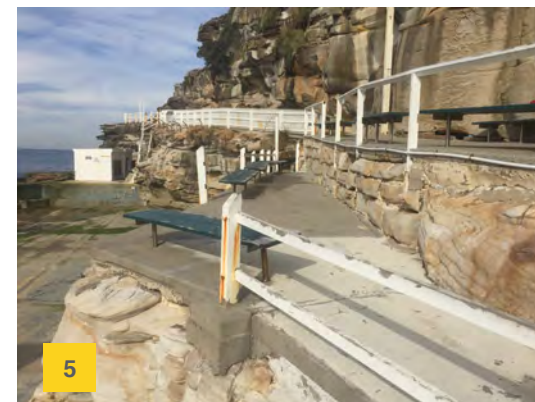


3 Secondary Pool Access

- Narrow stairway
- Uneven surfaces, step risers & treads
- Handrails are not continuous & are not provided along the length of the stairs
- No contrast strips on step nosing

4 Service Access

- Narrow stairway is damaged and unsafe
- Stairway has open risers



5 & 6 Seating Areas & Path to Viewing Area

- Uneven & damaged surfaces
- Narrow path with no passing spaces
- Path grade 1:12 – 1:14 with no landings
- Balustrades are too low, damaged & no kerb rail
- Seats & stairs obstruct path of travel
- No backrests or armrests on bench seating
- No barrier or kerb at edge of hard stand drop-off



Findings

Wayfinding + Signage

FINAL

Waverley Council

Bronte Park Universal Access Study

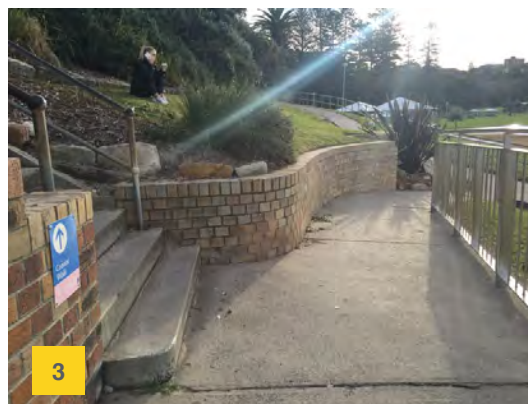


1 Entry Point - Bronte Rd

- Location of principal entry point unclear with insufficient layout and wayfinding cues
- Signage not provided at major decision-making point

2 Promenade

- Sign located in middle of pathway creating pathway obstruction



3 Coastal Walk - South end

- Directional signage location not at key decision-making points
- Directional signage location not in prominent location

4 Entry Point - Hewlett St

- Contrast of print and graphics on faded signage is insufficient making it difficult to read
- Sign not linked by hardstand



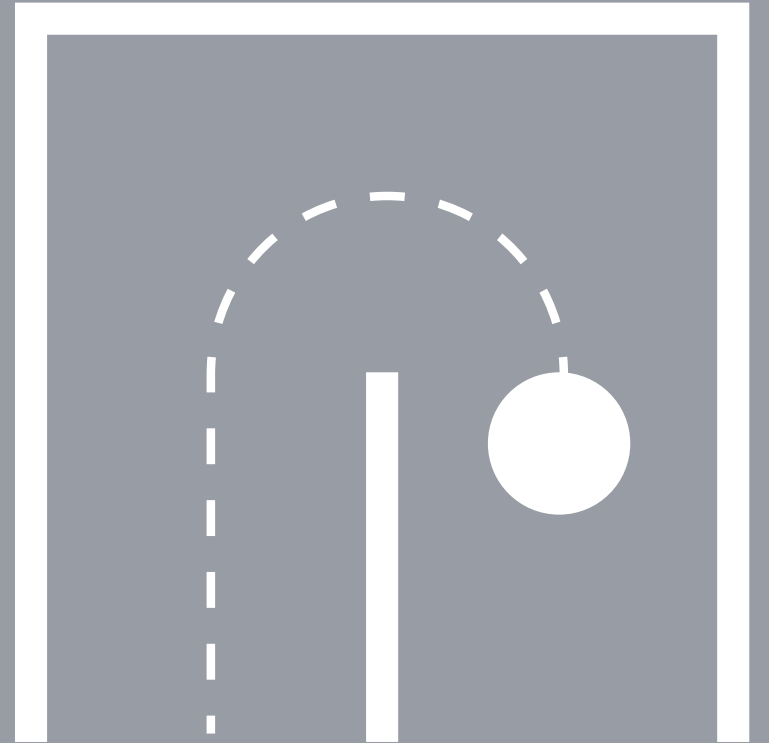
5 Green Links Signs - Bronte Rd

- Signage not set back off pathway creates an obstruction
- Directional signage not clear throughout park

6 Beach Safety Signs

- Sign does not extend to the ground making it difficult to detect for a person with a vision impairment

05



Strategy & Recommendations



Strategy & Recommendations

Planning A Visit

FINAL

Waverley Council

Bronte Park Universal Access Study

Information

General Information

- Review current distribution of information about Bronte Park and provide information about existing facilities, amenities and activities.
- Update information as works are completed.
- Provide detailed information on Council website in W3C accessible formats.
- Provide off-site information on access and mobility to and within the park by developing an Access Guide which includes information on transport options, accessible parking, drop-off area, access pathways, accessible toilet / shower facilities, seating and shelter, food/drink, beach wheelchair bookings.

Ocean Pool

- Provide information on Council website for accessible ocean pool options at nearby beaches of Bondi and Clovelly.
- Provide information on swimming groups and classes at Bronte Baths.

Access to Public Transport

- Provide detailed information on Council website on accessible public transport links and how to arrive at Bronte Park.
- Accessible public bus route 378/440 links to the proposed new accessible entrance on Bronte Rd.
- Arriving from Bondi Junction, take Route 440.
- Arriving from Clovelly, change at McPherson St shops near

Policies and Operational Management

Lugar Street and join Route 440.

- Arriving from South Bondi, change at Bondi Jct and join 440.
- Step free access into the park (with non-compliant gradients) is available from the bus stop on Bronte Marine Drive - Bus Stop ID 2026112.
- Arriving from northern catchment area, use route 360, change at McPherson St shops near Lugar Street and join Route 440.

Beach Wheelchair

- Develop an inclusive beach strategy for the Eastern Beaches area across both Waverley and Randwick Councils. Undertake investigation of beach suitability, topography, toilet/change amenities, storage availability, existing equipment, lifeguard support/training, parking/pathways etc. By delivering an overarching integrated approach to the provision of beach equipment will support a more inclusive beach experience for users and a consistent planning approach (rather than piece meal, ad-hoc equipment provision) which will be more cost-effective, streamlined efficiencies and potentially increased usage. Once a strategy has been developed this would then inform the recommendation for Bronte.

Policies and Operational Management

- Review ticketed parking times and consider increasing time for older residents using the park/beach.
- Process for keeping information updated.
- Frequent maintenance of removing vegetation on pathways.



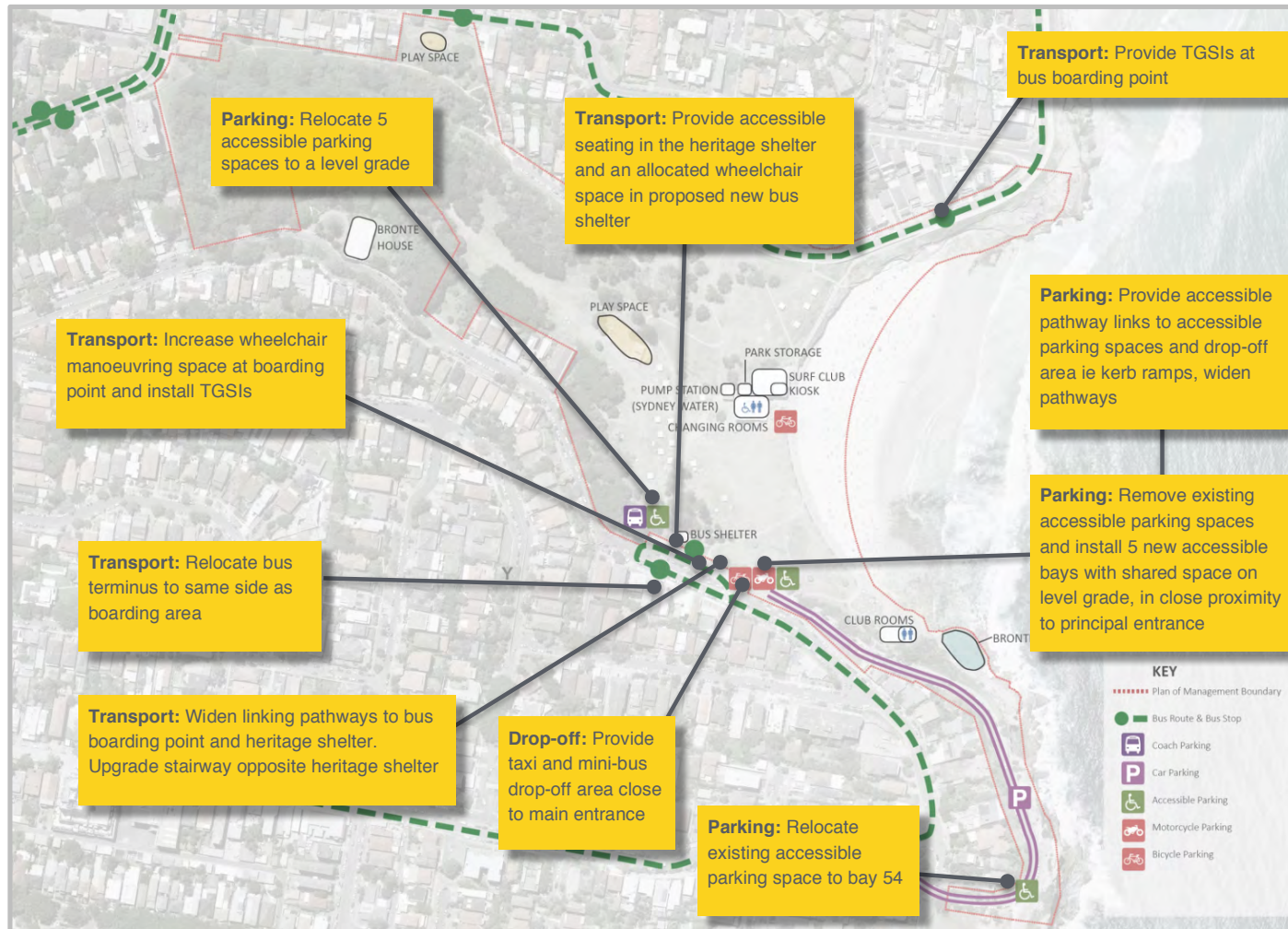
Strategy Map

Journey and Arrival | Parking and Transport

FINAL

Waverley Council

Bronte Park Universal Access Study



Design Goal:

Provide a universally accessible bus stop; and provide adequate numbers of accessible car parking spaces and drop-off areas in close proximity to the main accessible entrance to cater for visitors and residents arriving at the park by car.



Strategy & Recommendations

Journey and Arrival

FINAL

Waverley Council

Bronte Park Universal Access Study

Accessible Parking

- Provide 2% (5) accessible parking spaces on the south side of the park in close proximity to new principal (southern) accessible entrance. One of these spaces could be on the street outside the cafés.
- Accessible parking to comply with AS2890.6 to the maximum extent possible within the topographical constraints, including maximum gradient and crossfall 1:33 (for bitumen).
- Maintain provision of 1 accessible parking space in The Cutting, that provides link to viewing area. Relocate to bay 54 if pedestrian walkway is provided in the cutting.
- Provide accessible pathway links to accessible parking spaces including compliant kerb ramps and landings.
- Ensure pathway links provide minimum 1.8m width and consider clear accessway around speed humps.
- Provide 1 drop-off space / area close to park entrance for park users and café visitors to accommodate a mini-bus, cars and taxis.

Access to Public Transport

- Provide detailed information on Council website on accessible public transport links and how to arrive at Bronte Park

Bronte Rd

- Provide an accessible bus link on south side of the park.
- Relocate the bus terminus on Bronte Rd to the same side as the boarding area adjacent the new park entrance.
- Widen the pathway where the existing bus boarding area is to minimum 1800mm.
- Provide an accessible boarding point with sufficient wheelchair maneuvering area and TGSIs.
- Provide an allocated wheelchair space in the new bus shelter.
- Provide accessible seating in the heritage shelter.
- Provide an accessible link to the heritage shelter from the park entrance.
- Upgrade the stairs opposite the heritage shelter with highlighting on step nosing, handrails on both sides and tactile ground surface indicators.

Bronte Marine Drive

- Provide 1 bus stop link that is step-free on north side of the park.
- Provide TGSIs at the bus boarding point.
- Provide a new step free pathway link from the bus stop to the



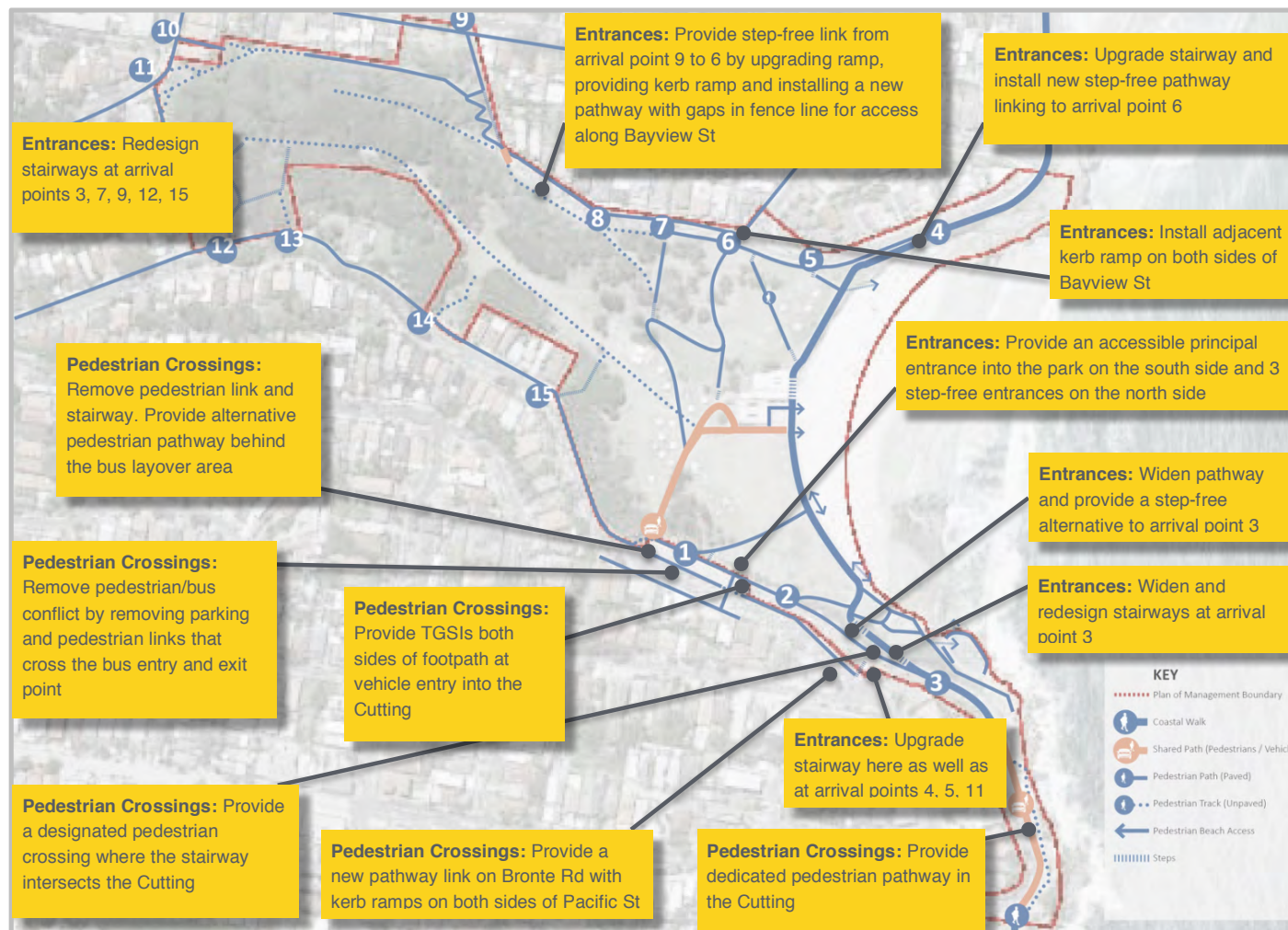
Strategy Map

Journey and Arrival | Pedestrian Crossings and Entrances

FINAL

Waverley Council

Bronte Park Universal Access Study



Design Goal:

Provide easily identified, distinct arrival points into the park and designated pedestrian access ways that reduce pedestrian/vehicle conflict and allow safe and continuous movement to all Bronte Park arrival points.



Strategy & Recommendations

Journey and Arrival

FINAL

Waverley Council

Bronte Park Universal Access Study

Pedestrian Crossings

- Provide a pedestrian pathway link on south side of Bronte Road to cafés on Bronte Road from Pacific Street. Install kerb ramps on both sides of Pacific Street and install a new pathway link from Pacific Street to cafés on Bronte Road.
- Provide a designated pedestrian (Zebra) crossing at the Cutting where the path and stairway linking to north side of Bronte Road crosses the cutting.
- Any pedestrian pathway crossing a vehicle way at the same grade should provide a tactile cue of the hazard. Provide TGSIs on the pathway at the vehicle entrance to the Cutting parking area.
- The Coastal Walk in The Cutting - provide a dedicated pedestrian pathway that links the Coastal Walk to minimise pedestrian / vehicle conflict.
- Address the pedestrian/vehicle conflict at the parking adjacent the bus layover area. Investigate removing parking from this area, due to safety issues with pedestrians crossing road from this area. Remove pedestrian links that cross over in front of the bus entry and exit points.
- Divert pedestrians behind the bus layover area (on the park side of the bus layover area) by installing new pathway.
- Remove existing stair at western end of bus layover area to deter pedestrians from heading straight into the bus turning area.

Entrances

South Side Entrances

- Provide 1 universally accessible principal entrance and 2 step-free entrances on the south side of the park.
- Relocate existing main entrance so that it aligns with the pedestrian crossing.
- Primary arrival point for the Coastal Walk (No. 3) - Widen and redesign stairway. Provide alternative step-free pathway link by widening path in the Cutting to 1500mm to allow 2 prams to pass.
- Stairway that intersects with The Cutting - Upgrade to include even surface on treads, highlighting on step nosing, continuous handrails on both sides and tactile ground surface indicators top and bottom.
- Arrival point at service vehicle driveway - provide a separate pedestrian pathway into park behind bus terminus.
- Convert existing accessible car parking area into a service vehicle parking area.



Strategy & Recommendations

Journey and Arrival

FINAL

Waverley Council

Bronte Park Universal Access Study

Entrances continued..

North Side Entrances

- Provide 3 step-free entrances into the Park on the north side
- Primary arrival point for the Coastal Walk (No.4) - provide handrails, TGSIs and highlighting on step nosing at stairs.
- Provide new step-free pathway link from entrance No.4 to No. 6.
- Step-free arrival point on Bayview St (No.6) - Install kerb ramp on the opposite side of the street.
- Arrival point at Hewlett St (No.9) - Upgrade ramp so that gradient is constant throughout its length and provide continuous handrails on both sides of switch back ramp. Keep vegetation clear of the ramp. Redesign and upgrade stairway.
- Install a new concrete path along Bayview St to arrival point no. 6. Install kerb ramp at the end of Bayview Street and provide gaps in the fence line so people can access path from the street.
- Arrival Point No. 7 - redesign stairways and provide handrails on both sides and highlighting on step nosing.
- Stairway between arrival point 5 and arrival point 6 – upgrade stairways and provide handrails on both sides and highlighting on step nosing.
- Arrival Point No. 5 - upgrade stairways with handrails on both sides and highlighting on step nosing.

West Side Entrances

- Designate 2 primary arrival points to the Gully and upgrade stairways.
- Arrival Point on Bronte Rd (No.15) (two entrance points) - Redesign 2 x top stairs with new stairs, handrails and highlighting on step nosing. Investigate stability of retaining wall. On bottom stairs, provide handrails on one side and highlighting on step nosing.
- Arrival Point on Bronte Rd (No.12) - Resurface the sandstone paving on the stairway to minimise trip hazards. Provide handrail on one side. Provide kerbs on side of stairs.
- Arrival Point on Murray St (No.10) – retain unpaved surface but upgrade so that it is more even.
- Arrival Point on Murray St (No. 11) - upgrade landings to make level. Provide handrails on both sides and highlighting on step nosing.



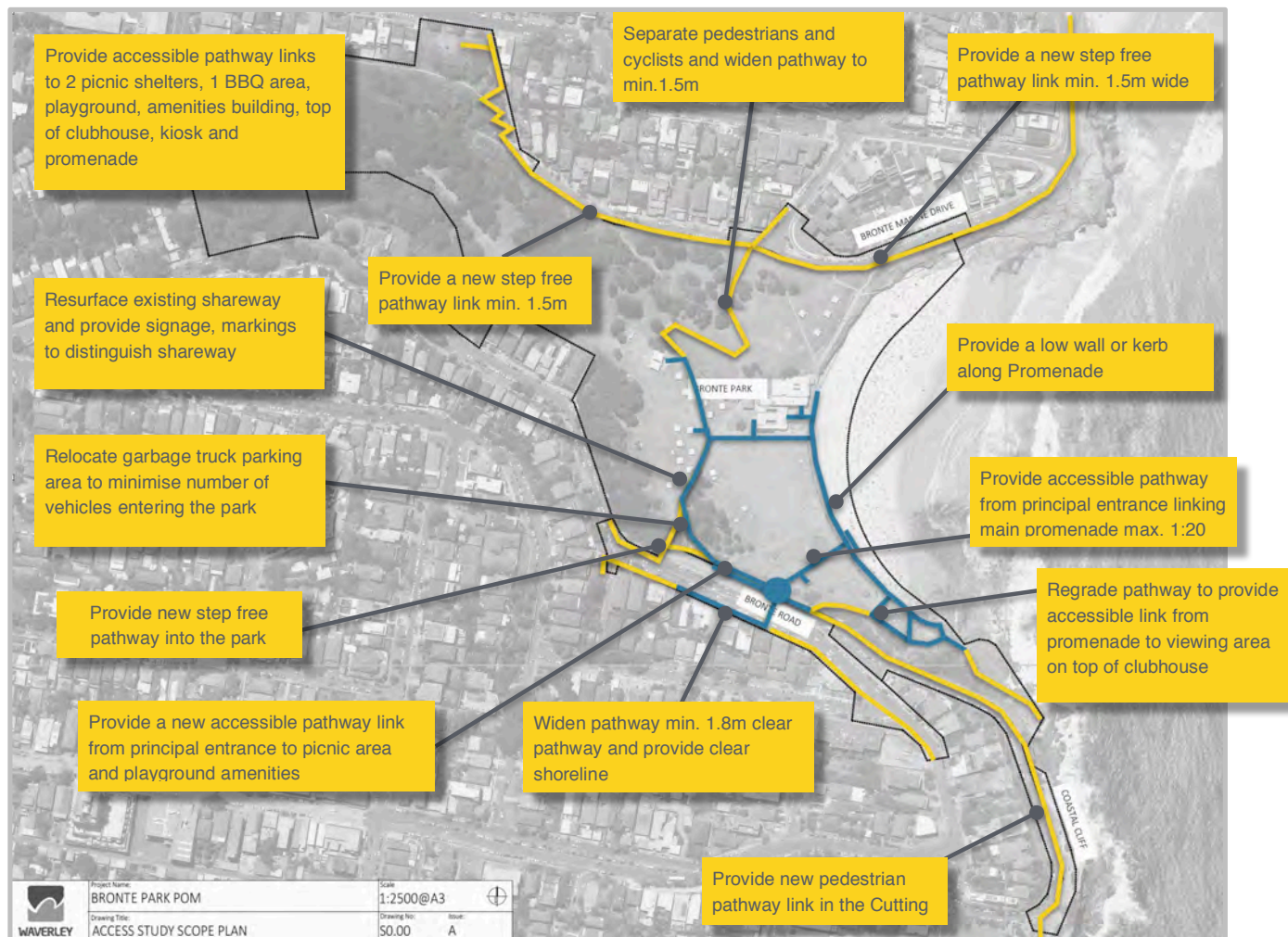
Strategy Map

Moving Through the Area | Pathways

FINAL

Waverley Council

Bronte Park Universal Access Study



Continuous Accessible Pathway Network

Step Free Pathway Network

Design Goal:

Provide a hierarchy of pathway networks into and through the park that link to parking, unique park features and facilities that benefits all users and creates a sense of convenience, safety & inclusion:

1. Continuous Accessible;
2. Continuous Step free;
3. Inclusive of stairs and
4. Informal pedestrian track.



Strategy & Recommendations

Moving Through the Area

FINAL

Waverley Council

Bronte Park Universal Access Study

Pathways

Links to Park and Principal Entrance

- Provide a hierarchy of pathway networks into and through the park: 1. Continuous Accessible; 2. Continuous Step free; 3. Inclusive of stairs and 4. Informal pedestrian track.
- Widen the footpath in front of the cafés on Bronte Road, making provision for a minimum 1.8m clear pathway. Provide a shoreline along the footpath, preferably along the building line or through provision of outdoor dining barriers or cobble set pavers on the kerb side of the footpath.
- Provide an accessible pathway (preferably no steeper than 1:20) from the principal entrance linking to the main promenade. Recommended minimum width of accessible pathways is 1800mm.
- Provide an accessible pathway link from the new principal entrance that links to the picnic area, playground and amenities buildings. Minimise the number of vehicles that enter the park.
- Relocate garbage truck parking area to existing accessible parking area. The area shared with vehicles should be adequately signed to maximise pedestrian safety. Resurface the existing shared way and create gaps in the speed humps for pedestrians. Provide a contrasting colour on speed humps.

Pathways Within Park

- Provide an accessible pathway link to:
 - 2 picnic shelters - 1 near northern amenities and one near southern end of park
 - 1 BBQ area
 - 1 Playground
 - Amenities buildings
 - Top of southern amenities block (viewing area)
 - Kiosk from promenade
 - Lifeguard room
- Provide a network of step free, 1500mm wide pathways into and through the park, where topographical constraints preclude accessible paths that are fully compliant with AS1428.1.
- Widen pathway that links to step free access into the park from south to 1500mm (entrance no.2) (maintain the existing non-compliant gradient).
- Widen pathway that links to step free access into the park from north (to 1500mm entrance no.6) (maintain the existing non-compliant gradient).
- It is preferable to separate pedestrians and cyclists. However, if cycle ways are shared with pedestrians, the path should be minimum 2.5m wide.
- At primary arrival point on the north side (Coastal Walk), provide a low wall or kerb along the section of path that has a drop off.



Strategy & Recommendations

Moving Through the Area

FINAL

Waverley Council

Bronte Park Universal Access Study

Pathways continued..

Pathways Within Park continued..

- At surf club, where stairway links to promenade, investigate diverting path behind surf club to reduce bottleneck (may be addressed in surf club upgrade).
- Address water pooling / drainage issue on section of path at northern pathway link into park at top of stairs near surf club, leading to a potentially slippery pathway.
- Stairway behind surf club to be upgraded with highlighting on step nosing, even surface on risers, handrails on both sides and tactile ground surface indicators. This may become part of the coast walk if path is diverted here.
- Provide a low wall (min height 450mm) or kerb (min height 150mm) along the section of promenade that is above 1m high.
- While small sections of the promenade crossfall are not compliant with AS1428.1, overall the promenade provides functional accessibility due to the location of these sections and width of the pathway. It is recommended however, that a hob be integrated along the edge of the promenade to enhance safety. In future upgrades of footpath and seawall rectify crossfall to 1:40 to comply with AS 1428.1.
- Gully pathway - remove trip hazard on path where drain is across path. Resurface the sandstone cobbled viewing area at waterfall to provide a more even and consistent surface.

Surfaces, Obstructions and Lighting

- Resurface areas of pathway throughout the park that are uneven and potential trip hazards.
- Keep formal pathways clear of branches and overhanging vegetation to a height of 2m.
- Provide adequate lighting levels on primary pathways, shared ways and cycle ways.

Stairways

- Upgrade stairways in the key access routes into and through the park (see Entrances section)
- Primary stairways to include even surface on treads, highlighting on step nosing, handrails on both sides of stairway and tactile ground surface indicators at the top and bottom. These stairs are most likely be used by visitors who may be unfamiliar with the area and may be walking the Coast Walk, arriving by bus to the southern entrance or parking and arriving at the southern entrance.
- Secondary stairways to include even surface on treads, highlighting on step nosing and handrail on both sides. These are stairs that are more likely to be used by residents who are familiar with the area.
- Tertiary stairs to include highlighting on step nosing and handrail on one side. These link to informal bush tracks.



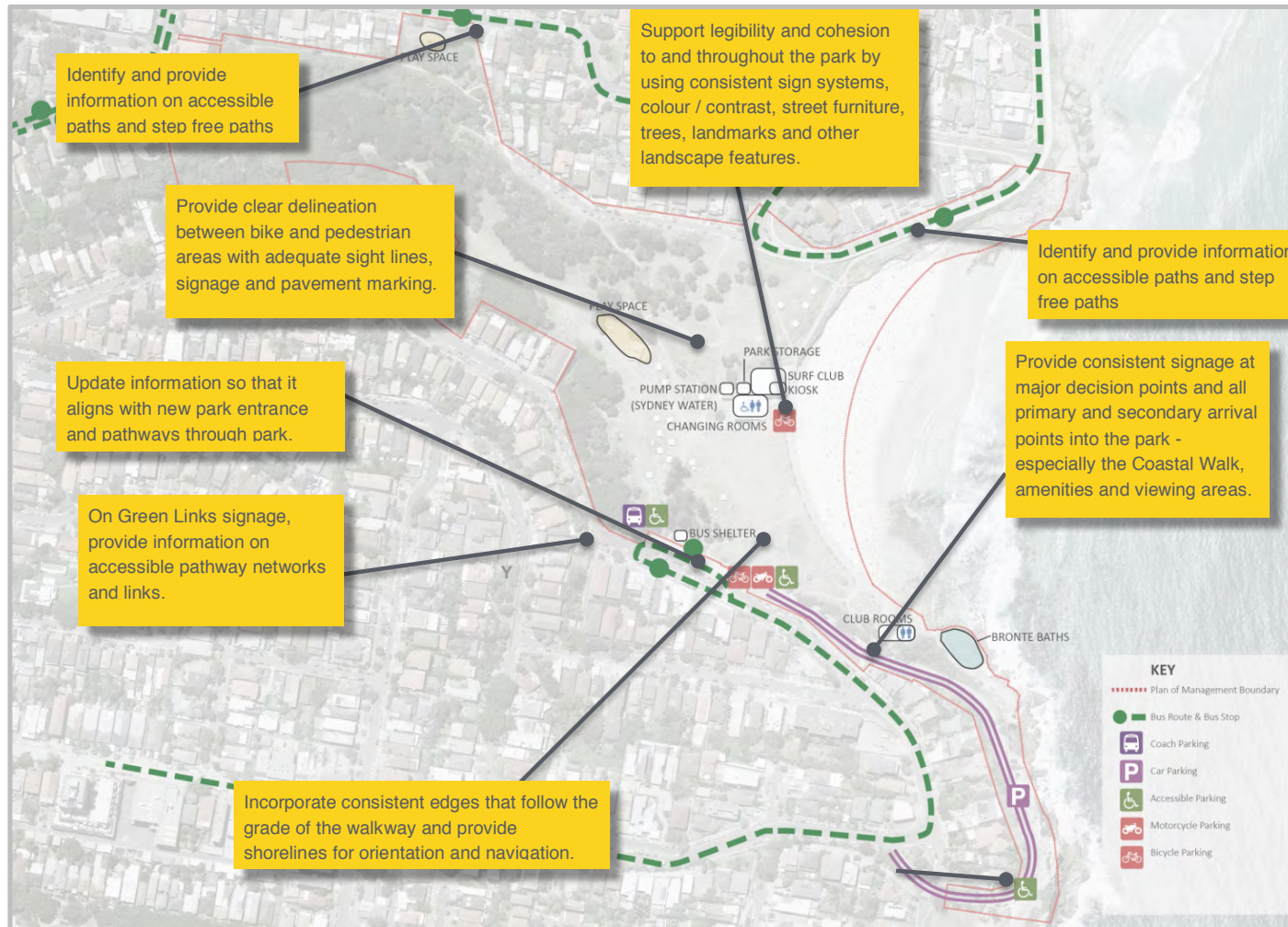
Strategy Map

Moving Through the Area | Wayfinding & Signage

FINAL

Waverley Council

Bronte Park Universal Access Study



Design Goal:

Implement a wayfinding strategy for the park that encompasses the physical environment, signage, customer service, information, brochures, guides and website.

Provide consistent and effective on and off-site information with consideration of people with a range of sensory abilities, intellectual abilities, literacy levels and languages.



Strategy & Recommendations

Moving Through the Area

FINAL

Waverley Council

Bronte Park Universal Access Study

Wayfinding & Signage

Wayfinding System

- Support legibility and cohesion to and throughout the park by using consistent sign systems, colour / contrast, street furniture, trees, landmarks and other landscape features.
- Incorporate consistent edges that follow the grade of the walkway and provide shorelines for orientation and navigation. Well defined edges like landscaping, walls and building lines provide good shorelines.
- Provide clear delineation between bike and pedestrian areas with adequate sight lines, signage and pavement marking.
- Improve signage locations so they are placed at major decision making points.
- Ensure that signs illustrate the same, up to date connections. Create an informed and complete user experience by ensuring coverage of signage throughout the entire Bronte Park area.
- Implement a signage system with relevant content, showing up-to-date maps and information. Help visitors navigate through the Bronte area by offering content in a structured way with clear hierarchy.
- Improve communication of directional and warning messages for all park users, including people who are blind or have a vision impairment. Consider using Braille and tactile elements / information at major access points.
- Incorporate wayfinding technology and GPS into signage and information.
- Ensure an access and inclusion strategy is integrated into the Waverley Wayfinding & Signage Guidelines.

Signage System

- Provide consistent signage at major decision points and all primary and secondary points into the park, especially the Coastal Walk, amenities and viewing areas.
- Update the information so that it aligns with new park entrance and pathways through park.
- Identify and provide information on accessible paths and step free paths.
- On Green Links signage, provide information on accessible pathway networks and links.
- Ensure the physical placement, installation and illumination of signs enhances legibility when viewed from a distance.
- Provide information at an optimal height so that it is clearly visible by a person while either seated or standing.
- Provide adequate colour contrast between the sign and the symbol and the surface surrounding the sign e.g. wall or background.
- Use consistent signage text, graphic style, pictograms and locations. Increase font and map size and contrast, use plain background for printed information.
- Provide an inclusive signage system consistent with Council's approach that provides alternate or equivalent access to information signage such as heritage signs.



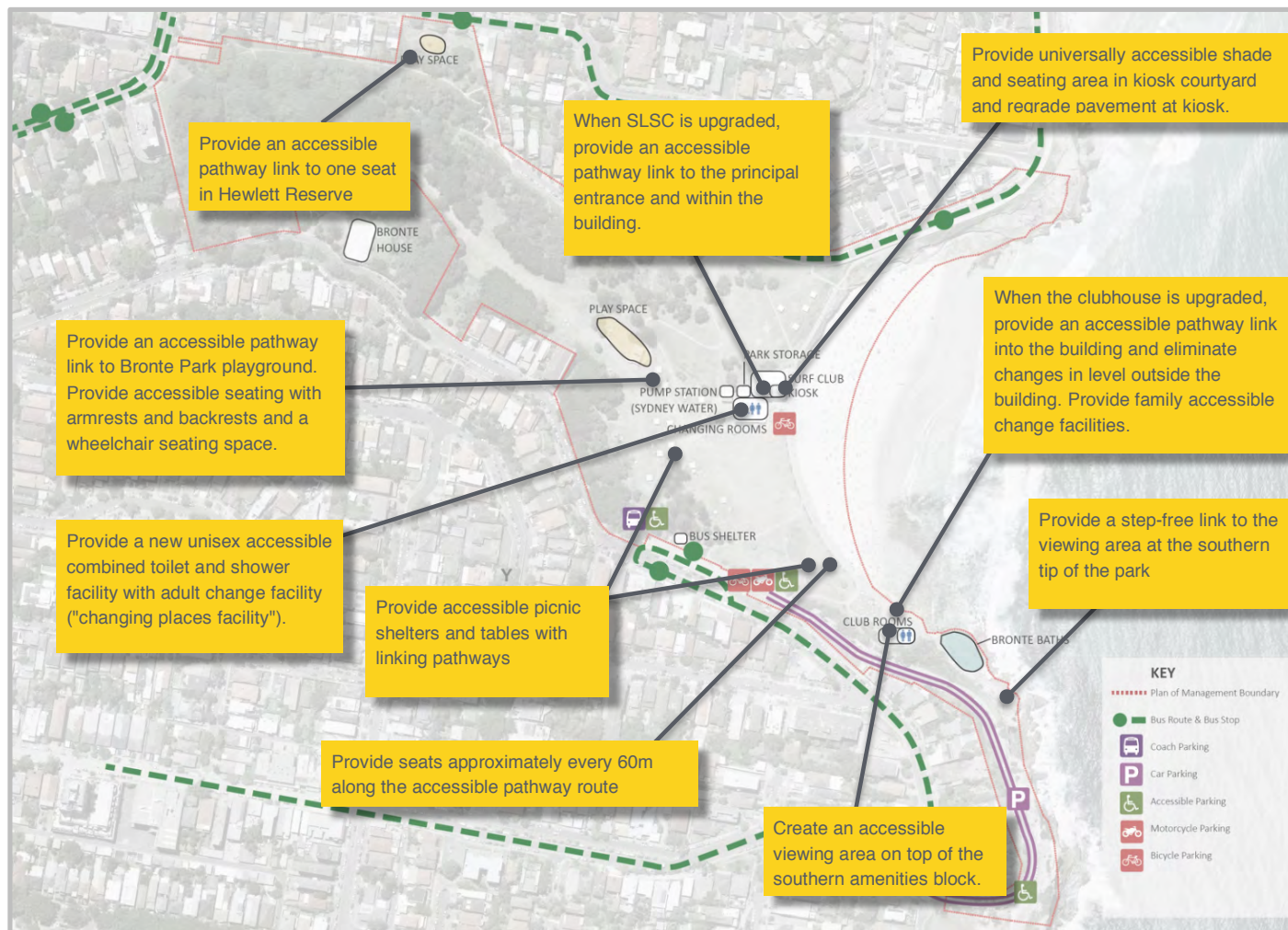
Strategy Map

Onsite Experience | Facilities

FINAL

Waverley Council

Bronte Park Universal Access Study



Design Goal:

Provide an adequate proportion and distribution of universally accessible facilities throughout the park that are convenient, durable and linked to accessible paths of travel.



Strategy & Recommendations

Onsite Experience

FINAL

Waverley Council

Bronte Park Universal Access Study

Facilities

Toilet / shower / change facilities

- Provide a new unisex accessible combined toilet and shower facility with adult change facility ("changing places facility") in the northern amenities building.
- Provide a new family, unisex accessible combined toilet and shower facility in the southern amenities block, with baby change facilities included.
- Provide cubicles suitable for people with an ambulant disability in the male and female toilets in the northern amenities building and southern amenities block.
- Clear door width into accessible facility (northern building) needs to be wide enough to accommodate a beach wheelchair (minimum 900 clear door width).

SLSC, Kiosk & Southern Amenities Block

- There is currently limited access to the entrance into SLSC and the Life Guard Room. When SLSC is upgraded, provide an accessible pathway link to the principal entrance and within the building in accordance with The Premises Standards.
- Provide universally accessible shade and seating area in kiosk courtyard - remove steps and level change.
- Regrade the area of pavement linking to the kiosk and at the counter so that it is 1:40 in all directions. Provide a lower height section of counter at kiosk (900mm AFFL).
- There is currently no accessible entrance into the Southern

amenities block. When the building is upgraded, provide an accessible pathway link into the building and amenities and eliminate changes in level outside the building.

Viewing Areas

- Provide a step-free link to the viewing area at the southern tip of the park (beyond Bronte Baths).
- Create an accessible viewing area at the south end of the park on top of the southern amenities block. This is the proposed accessible alternative viewing area to the viewing area at the southern tip of the park.
- Provide an accessible pathway link to the viewing area.
- Provide accessible seating at the viewing area.

Playgrounds

- Provide an accessible pathway link to Bronte Park playground.
- Provide accessible seating with armrests and backrests at different areas around the playground (20% of seats).
- Provide a wheelchair space (hardstand) set back off pathway next to seats (1300mm x 800mm) - in 2 different areas.
- Provide an accessible pathway link to one seat in Hewlett Reserve playground. Provide one seat on a hardstand with backrest and armrests; provide additional hardstand next to seat 1300mm x 800mm to accommodate a wheelchair.



Strategy & Recommendations

Onsite Experience

FINAL

Waverley Council

Bronte Park Universal Access Study

Facilities continued..

BBQs and Picnic Shelters

- Provide accessible BBQ facilities that are linked to accessible pathways.
- Provide accessible picnic shelters and picnic tables with linking pathways, with sufficient hardstand and wheelchair seating spaces.

Seating and Street Furniture

- Provide 50% seating in the main park area with backrests and armrests.
- Increase the amount of shade with seating underneath throughout the park.
- Provide wheelchair/pram space adjacent two seats in two different locations on the promenade.
- Provide seats approximately every 60m along the accessible pathway route (set back from footpaths with an allocated hardstand adjacent).
- When upgraded, select street furniture (bollards, bins, seats) that provide adequate luminance contrast with the background surface.
- Maintain accessible water fountains with hardstands and circulation space.

Beach Access

- Provide a beach wheelchair. Identify storage location and operational management strategy for booking and accessing the wheelchair (ie will it be locked and accessed by lifeguard). Provide information on council website.
- Investigate suitability of beach for safe access to water using beach wheelchair.
- Provide one accessible ramp link to beach at southern end, width 1800mm, maximum gradient 1:14 and landings every 9m. Provide handrails on both sides of the ramp.
- Omit TGSIs from beach access stairs and ramps due to other cues – (beach, handrails) and set back from path of travel.
- Stairway access to beach - provide handrails on both sides of stairs leading to beach, and highlighting on step nosing.
- Provide kerb rails to all new balustrades along promenade.
- Maintain a clear shoreline along the promenade, with no obstructions, seats set back from pathway.
- Redesign and upgrade northern stairway to beach to include increased width, even risers, highlighting on step nosing and handrails on both sides.



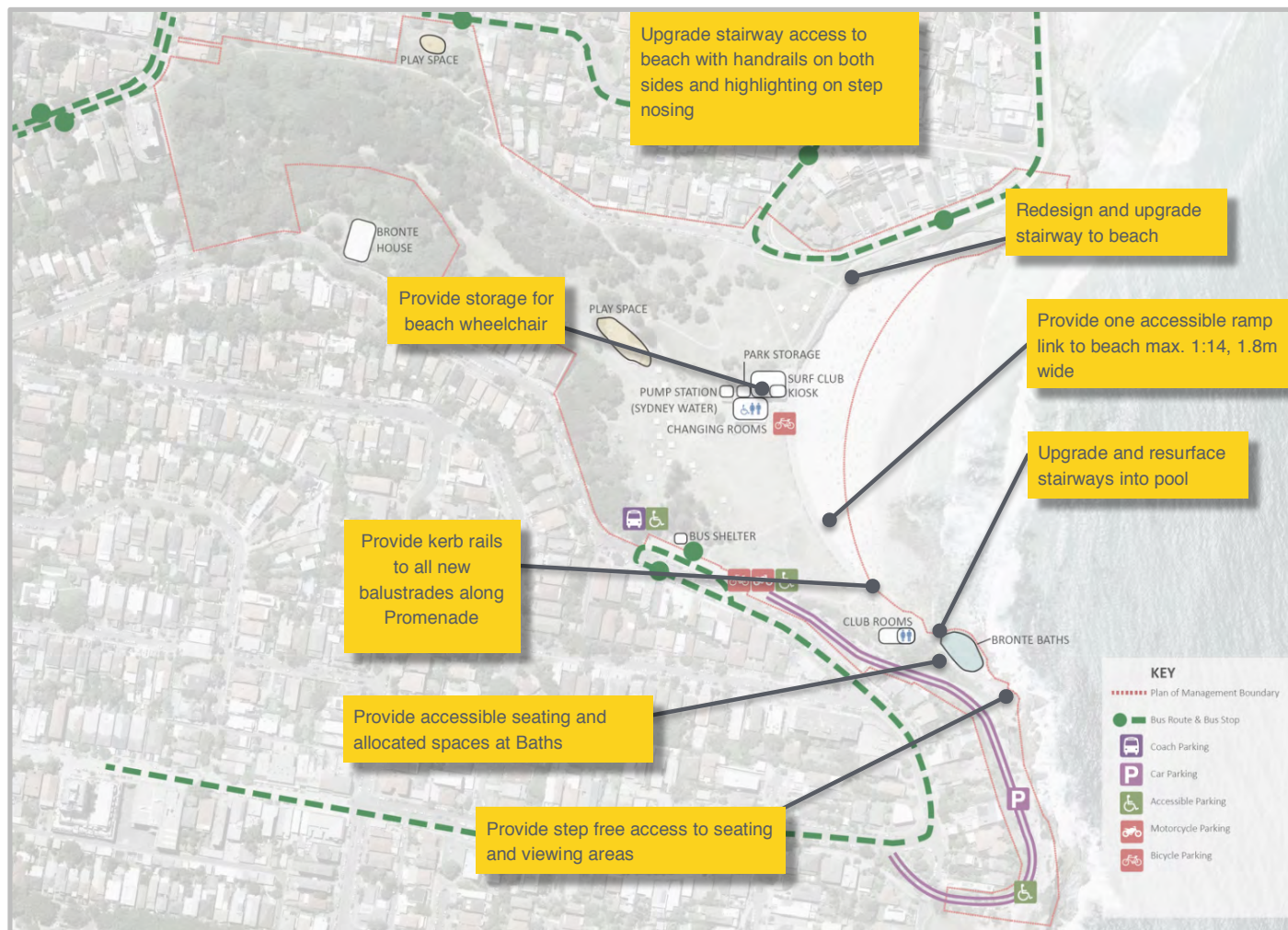
Strategy Map

Onsite Experience | Beach Access & Bronte Baths

FINAL

Waverley Council

Bronte Park Universal Access Study



Design Goal:

Provide a universally accessible beach access point and improve the safety and amenity of the existing stairs to the beach and Bronte Baths.



Strategy & Recommendations

Onsite Experience

FINAL

Waverley Council

Bronte Park Universal Access Study

Bronte Baths

Pool Access

- Due to the significant level change (approximately 3.5m) and limited space due to existing topography, there is no accessible entrance into the Pool
- Provide information on Council website for accessible pool facilities at nearby beaches of Bondi and Clovelly
- Provide safer stairways into the pool by redesigning and upgrading primary stairway into the pool to meet 1428.1 and provide consistent riser height
- Provide TGSIs along the top of primary stairway in accordance with AS1428.4.1 (as they are adjacent to the path of travel)
- Extend handrails along the full length of stairway into pool on both sides of stairway
- Extend fixed handrail along pool edge to ocean access stairway
- Install continuous handrail at secondary stairway on one side due to narrowness of stairs
- Install gates to restrict access to Service Access Stairway
- Provide slip resistant treatment to both primary and secondary stairways
- Provide highlighting strips on all stair nosings in accordance with AS1428.1

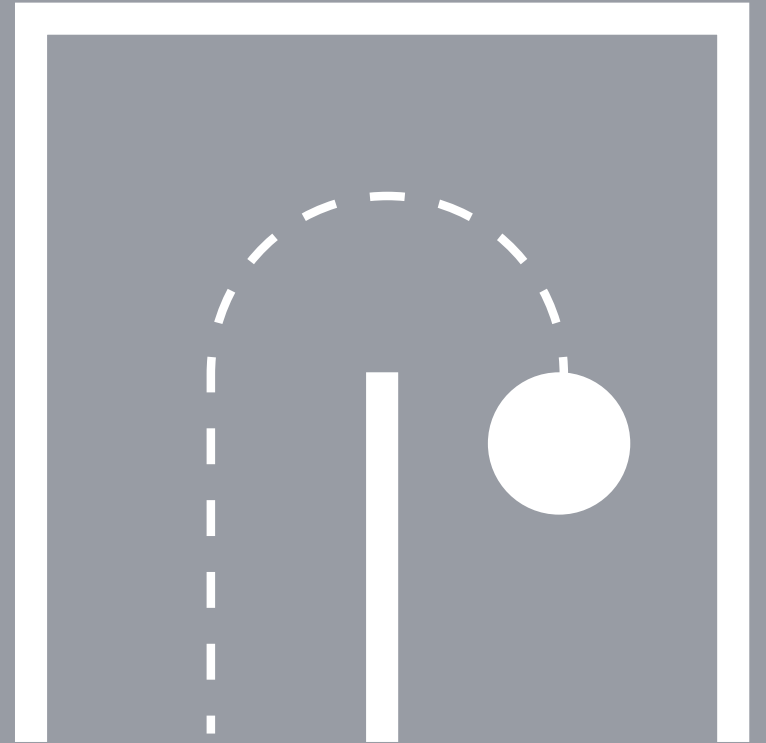
Seating Areas

- Investigate safety risk of relocating seats adjacent to balustrades
- Replace balustrades at a height of 1000mm with kerbrail at a height of 150mm
- Provide a range of seating options with back and arm rests at all seating areas
- Provide 2 x wheelchair/pram seating spaces next to seating on accessway
- Remove and relocate 2 bench seats on accessway to viewing area
- Replace hardstand at top level seating area and provide kerb along hardstand edge

Accessway

- Reconfigure stair access to top level seating by setting stairs back from pathway with handrails and highlighting strips on nosing
- Replace balustrades at a height of 1000mm with kerbrail at a height of 150mm
- Resurface accessway to Viewing Area and provide level access to new hardstand
- Provide identification and wayfinding signage to viewing area

06



Action Plan & Prioritisation



Action List

Summary

DRAFT

Waverley Council

Bronte Park Universal Access Study

Prioritisation

The following table outlines a summary of actions as provided in the strategy section of the report.

Additionally, a priority rating has been incorporated into the table to assist in guiding planned upgrade works and identify issues to be addressed in order of importance based on safety and the functional impact of a person using the project area.

H High Priority

Elements that are critical in providing safety and equitable access. Addresses areas that are potentially unsafe or inaccessible or provide quick and easy solutions. These actions enable a person to safely use the space, enter and exit the park and access highly used amenities.

M Medium Priority

Elements that improve a person’s independence. Addresses areas that can increase functionality. These actions enable a person to independently use key amenities in the park.

L Low Priority

Elements that improve ease of use, comfort and convenience. Addresses areas that increase usability. These actions enable a person to access lower use areas or areas that are difficult to make accessible due to topographical constraints.



Action List

Planning a Visit

DRAFT

Waverley Council

Bronte Park Universal Access Study

	Ref	Access Feature	Action
	1	Information	
H	1.1	General Information	Review and update distribution of information about Bronte Park and provide information about existing facilities, amenities and activities.
H	1.2	General Information	Develop an Access Guide that provides off-site information on access and mobility to and within the park and distribute detailed information on Council website in W3C accessible formats.
H	1.3	Ocean Pool	Provide information on Council website for accessible ocean pool options at nearby beaches of Bondi and Clovelly and provide information on swimming groups and classes at Bronte Baths.
H	1.4	Access to Public Transport	Provide detailed information on Council website on accessible public transport links and how to arrive at Bronte Park.
M	1.5	Beach Wheelchair	Develop an inclusive beach strategy for the Eastern Beaches area across both Waverley and Randwick Councils. Undertake investigation of beach suitability, topography, toilet/change amenities, storage availability, existing equipment, lifeguard support/training, parking/pathways etc.
	2	Policies and Operational Management	
L	2.1	Policies	Review ticketed parking times and consider increasing time for older residents using the park/beach.
M	2.3	Operational Management	Frequent maintenance of removing vegetation on pathways.
H	2.4	Operational Management	Process for keeping information updated.

H High Priority **M** Medium Priority **L** Low Priority



Action List

Journey and Arrival

DRAFT

Waverley Council

Bronte Park Universal Access Study

	Ref	Access Feature	Action
	3	Accessible Parking	
H	3.1	Accessible Parking	Provide 2% accessible parking spaces on the south side of the park in close proximity to new principal entrance. Parking to comply with AS2890.6 to the maximum extent possible within the topographical constraints.
M	3.2	Accessible Parking	Maintain provision of 1 accessible parking space in The Cutting, that provides link to viewing area. Relocate to bay 54 if pedestrian walkway is provided in the cutting.
H	3.3	Links to Parking	Provide accessible pathway links to accessible parking spaces including compliant kerb ramps and landings.
H	3.4	Links to Parking	Ensure pathway links provide min.1.8m width and consider clear accessway around speed humps.
H	3.5	Drop-off Area	Provide 1 drop-off space / area close to park entrance for park users and café visitors to accommodate a mini-bus and taxis.
	4	Access to Public Transport	
H	4.1	Bronte Rd – accessible bus stop	Provide an accessible bus link on south side of the park - provide an accessible boarding point with sufficient wheelchair maneuvering area and TGSIs; relocate the bus terminus on Bronte Rd to the same side as the boarding area adjacent the new park entrance.
H	4.2	Bronte Rd – pathway link	Widen the pathway where the existing bus boarding area is to min.1800mm.
M	4.3	Bronte Rd – pathway link	Provide an accessible link to the heritage shelter from the park entrance.
L	4.4	Bronte Rd – pathway link	Upgrade the stairs opposite the heritage shelter with highlighting on step nosing, handrails on both sides and tactile ground surface indicators.
H	4.5	Bronte Rd - seating	Provide an allocated wheelchair space in the new bus shelter. Provide accessible seating in the heritage shelter.

H High Priority **M** Medium Priority **L** Low Priority



Action List

Journey and Arrival

DRAFT

Waverley Council

Bronte Park Universal Access Study

	Ref	Access Feature	Action
M	4.6	Bronte Marine Drive – boarding point	Provide TGSIs at the bus boarding point.
H	4.7	Bronte Marine Drive – pathway link	Provide a new step free pathway link from the bus stop to the existing step free path through the park.
	5	Pedestrian Crossings	
H	5.1	Bronte Rd - Pacific St	Provide a pedestrian pathway link on south side of Bronte Road to cafés on Bronte Road from Pacific Street. Install kerb ramps on both sides of Pacific Street install a new pathway link from Pacific Street to cafés on Bronte Road.
H	5.2	The Cutting	Provide a designated pedestrian (Zebra) crossing at the Cutting where the path + stairway linking to north side of Bronte Road crosses the cutting
H	5.3	The Cutting	Any pedestrian pathway crossing a vehicleway at the same grade should provide a tactile cue of the hazard. Provide TGSIs on the pathway at the vehicle entrance to the Cutting parking area.
H	5.4	The Cutting - Coastal Walk	Remove shareway in the Cutting and provide new dedicated pedestrian pathway
H	5.5	Bus Layover Area	Address the pedestrian/vehicle conflict at the parking adjacent the bus layover area. Remove pedestrian links that cross over in front of the bus entry and exit points. Divert pedestrians behind the bus layover area (on the park side of the bus layover area) by installing new pathway. Remove existing stair at western end of bus layover area to deter pedestrians from heading straight into the bus turning area.
	6	Entrances	
H	6.1	Principal Entrance	Relocate existing main entrance so that it aligns with the pedestrian crossing and provide universally accessible principal entrance.
H	6.2	South Side - Coastal Walk	Primary arrival point for the Coastal Walk (No. 3) - Widen and redesign stairway. Provide alternative step-free pathway link by widening path in the Cutting to 1500mm to allow 2 prams to pass.
M	6.3	South Side - The Cutting	Stairway that intersects with The Cutting - Upgrade to include even surface on treads, highlighting on step nosing, continuous handrails on both sides and tactile ground surface indicators top and bottom.

H High Priority
 M Medium Priority
 L Low Priority



Action List

Journey and Arrival

DRAFT

Waverley Council

Bronte Park Universal Access Study

	Ref	Access Feature	Action
H	6.4	South Side - Service Vehicle Entry	Arrival point at service vehicle driveway - provide a separate pedestrian pathway into park behind bus terminus and convert existing accessible car parking area into a service vehicle parking area.
H	6.5	North Side - Coastal Walk	Primary arrival point for the Coastal Walk (No.4) - Provide handrails, TGSIs and highlighting on step nosing at stairs.
H	6.6	North Side - Step Free	Provide new step-free pathway link from entrance No.4 to No. 6. Install kerb ramp on the opposite side of the Bayview street
M	6.7	North Side - Hewlett St	Arrival point No.9 - Upgrade ramp so that gradient is constant throughout its length and provide continuous handrails on both sides of switch back ramp. Keep vegetation clear of the ramp. Redesign and upgrade stairway.
H	6.8	North Side - Bayview St	Install a new concrete path along Bayview St to arrival point no. 6. Install kerb ramp at the end of Bayview Street and provide gaps in the fence line so people can access path from the street.
M	6.9	North Side - Bayview St	Arrival Point No. 7 - redesign stairways and provide handrails on both sides and highlighting on step nosing.
M	6.10	North Side - Bronte Marine Drive	Stairway between arrival point 5 and arrival point 6 – upgrade stairways and provide handrails on both sides and highlighting on step nosing.
M	6.11	North Side - Bronte Marine Drive	Arrival Point No. 5 - upgrade stairways with handrails on both sides and highlighting on step nosing.
M	6.12	West Side – Bronte Rd	Arrival Point No.15 (two entrance points) - Redesign 2 x top stairs with new stairs, handrails and highlighting on step nosing. Investigate stability of retaining wall. On bottom stairs, provide handrails on one side and highlighting on step nosing.
H	6.13	West Side – Bronte Rd	Arrival Point No.12 - Resurface the sandstone paving on the stairway to minimise trip hazards. Provide handrail on one side. Provide kerbs on side of stairs.
L	6.14	West Side – Murray St	Arrival Point No.10 – retain unpaved surface but upgrade so that it is more even.
L	6.15	West Side – Murray St	Arrival Point No. 11 - upgrade landings to make level. Provide handrails on both sides and highlighting on step nosing.

H High Priority **M** Medium Priority **L** Low Priority



Action List

Moving Through the Area

DRAFT

Waverley Council

Bronte Park Universal Access Study

	Ref	Access Feature	Action
	7	Pathways	
H	7.1	Pathway link to Cafés	Widen the footpath in front of the cafés on Bronte Road, making provision for a minimum 1.8m clear pathway. Provide a shoreline along the footpath, preferably along the building line or through provision of outdoor dining barriers or cobble set pavers on the kerb side of the footpath.
H	7.2	Pathway link to Promenade	Provide an accessible 1.8m wide pathway from the principal entrance linking to the main promenade.
H	7.3	Pathway link to Picnic Area	Provide an accessible pathway link from the new principal entrance that links to the picnic area, playground and amenities buildings.
H	7.4	Shareway - Service Vehicle	Relocate garbage truck parking area to existing accessible parking area. The area shared with vehicles should be adequately signed to maximise pedestrian safety. Resurface the existing shared way and create gaps in the speed humps for pedestrians. Provide a contrasting colour on speed humps.
H	7.5	Pathway links to Facilities	Provide an accessible pathway link to: 2 picnic shelters, 1 BBQ area, 1 Playground, Amenities buildings, Top of southern amenities block (viewing area), Kiosk from promenade, Lifeguard room.
M	7.6	South Side Pathway - Step Free	Widen pathway that links to step free access into the park from south to 1500mm (entrance no.2) (maintain the existing non-compliant gradient).
H	7.7	North Side Pathway - Step Free	Widen pathway that links to step free access into the park from north (to 1500mm entrance no.6). It is preferable to separate pedestrians and cyclists. However, if cycle ways are shared with pedestrians, the path should be minimum 2.5m wide.
H	7.8	North Side Pathway - Coastal Walk	At primary arrival point on the north side (Coastal Walk), provide a low wall or kerb along the section of path that has a drop off.
M	7.9	Stairway link to Promenade - SLSC	At surf club, where stairway links to promenade, investigate diverting path behind surf club to reduce bottleneck (may be addressed in surf club upgrade).
H	7.10	Stairway link to Promenade - SLSC	Address water pooling / drainage issue on section of path at northern pathway link into park at top of stairs near surf club, leading to a potentially slippery pathway.
M	7.11	Stairway link to Picnic Area - SLSC	Stairway behind surf club to be upgraded with highlighting on step nosing, even surface on risers, handrails on both sides and tactile ground surface indicators. This may become part of the coast walk if path is diverted here.

H High Priority
 M Medium Priority
 L Low Priority



Action List

Moving Through the Area

DRAFT

Waverley Council

Bronte Park Universal Access Study

	Ref	Access Feature	Action
H	7.12	Promenade Edge	Provide a low wall (min height 450mm) or kerb (min height 150mm) along the section of promenade that is above 1m high.
H	7.13	Promenade Grade	While small sections of the promenade crossfall are not compliant with AS1428.1, overall the promenade provides functional accessibility due to the location of these sections and width of the pathway. It is recommended however, that a hob be integrated along the edge of the promenade to enhance safety. In future upgrades of footpath and seawall rectify crossfall to 1:40 to comply with AS 1428.1.
M	7.14	Gully Track	Gully pathway - remove trip hazard on path where drain is across path. Resurface the sandstone cobbled viewing area at waterfall to provide a more even and consistent surface.
H	7.15	Surfaces	Resurface areas of pathway throughout the park that are uneven and potential trip hazards.
M	7.16	Obstructions	Keep formal pathways clear of branches and overhanging vegetation to a height of 2m.
M	7.17	Lighting	Provide adequate lighting levels on primary pathways, shared ways and cycle ways.
H	7.18	Primary Stairways	Primary stairways to include even surface on treads, highlighting on step nosing, handrails on both sides of stairway and tactile ground surface indicators at the top and bottom.
M	7.19	Secondary Stairways	Secondary stairways to include even surface on treads, highlighting on step nosing and handrail on both sides. These are stairs that are more likely to be used by residents who are familiar with the area.
L	7.20	Tertiary Stairways	Tertiary stairs to include highlighting on step nosing and handrail on one side. These link to informal bush tracks.
	8	Wayfinding & Signage	
M	8.1	Architectural Cues	Incorporate consistent edges that follow the grade of the walkway and provide shorelines for orientation and navigation. Well defined edges like landscaping, walls and building lines provide good shorelines.
H	8.2	Bike Paths	Provide clear delineation between bike and pedestrian areas with adequate sight lines, signage and pavement marking.

H High Priority
 M Medium Priority
 L Low Priority



Action List

Moving Through the Area

DRAFT

Waverley Council

Bronte Park Universal Access Study

	Ref	Access Feature	Action
M	8.3	Signage Location	Update the information so that it aligns with new park entrance and pathways through park. Improve signage locations so they are placed at major decision making points.
M	8.4	Accessible Pathway Network	Improve communication of directional and warning messages for all park users, including people who are blind or have a vision impairment. Identify and provide information on accessible pathway networks links and step free paths.
M	8.5	Graphic Signage	Provide consistent signage at major decision points and all primary and secondary points into the park, especially the Coastal Walk, amenities and viewing areas. Use consistent signage text, graphic style, pictograms and locations. Increase font and map size and contrast, use plain background for printed information.
L	8.6	Green Links Sign	On Green Links signage, provide information on accessible pathway networks and links.
L	8.7	Information Signage	Provide an inclusive signage that provides alternate or equivalent access to information signage such as heritage signs.
L	8.8	Braille / Tactile elements	Consider using Braille and tactile elements / information at major access points.
L	8.9	Inclusive Technology	Incorporate wayfinding technology and GPS into signage and information.
H	8.10	Waverley Wayfinding & Signage Guidelines	Ensure an access and inclusion strategy is integrated into the Waverley Wayfinding & Signage Guidelines

H High Priority

M Medium Priority

L Low Priority



Action List

Onsite Experience

DRAFT

Waverley Council

Bronte Park Universal Access Study

	Ref	Access Feature	Action
	9	Facilities	
H	9.1	Toilet / shower / change facilities	Provide a new unisex accessible combined toilet and shower facility with adult change facility ("changing places facility") in the northern amenities building.
M	9.2	Toilet / shower / change facilities	Provide a new family, unisex accessible combined toilet and shower facility in the southern amenities block, with baby change facilities included.
M	9.3	Ambulant Toilet Facilities	Provide cubicles suitable for people with an ambulant disability in the male and female toilets in the northern amenities building and southern amenities block.
H	9.4	SLSC	There is currently limited access to the entrance into SLSC and the Life Guard Room. When SLSC is upgraded, provide an accessible pathway link to the principal entrance and within the building in accordance with The Premises Standards.
H	9.5	Kiosk Seating Area	Provide universally accessible shade and seating area in kiosk courtyard - remove steps and level change.
H	9.6	Kiosk	Regrade the area of pavement linking to the kiosk and at the counter so that it is 1:40 in all directions. Provide a lower height section of counter at kiosk (900mm AFFL).
M	9.7	Southern Amenities Block	When the southern amenities block building is upgraded, provide an accessible pathway link into the building and amenities and eliminate changes in level outside the building.
L	9.8	Viewing Area - Bronte Baths	Provide a step-free link to the viewing area at the southern tip of the park (beyond Bronte Baths).
M	9.9	Viewing Area - Southern amenities block	Create an accessible viewing area at the south end of the park on top of the southern amenities block. This is the proposed accessible alternative viewing area to the viewing area at the southern tip of the park. Provide an accessible pathway link to the viewing area.
M	9.10	Viewing Area	Provide accessible seating at viewing areas
H	9.11	Playground - pathway link	Provide an accessible pathway link to Bronte Park playground.

H High Priority
 M Medium Priority
 L Low Priority



Action List

Onsite Experience

DRAFT

Waverley Council

Bronte Park Universal Access Study

	Ref	Access Feature	Action
L	9.12	Playground - pathway link	Provide an accessible pathway link to one seat in Hewlett Reserve playground.
M	9.13	Bronte Park Playground - seating	Provide accessible seating with armrests and backrests at different areas around the playground (20% of seats). Provide a wheelchair space (hardstand) set back off pathway next to seats (1300mm x 800mm) - in 2 different areas.
L	9.14	Hewlett Reserve Playground - seating	Provide one seat on a hardstand with backrest and armrests; provide additional hardstand next to seat 1300mm x 800mm to accommodate a wheelchair.
H	9.15	Accessible Seating	Provide 50% seating in the main park area with backrests and armrests. Provide wheelchair/pram space adjacent two seats in two different locations on the promenade.
M	9.16	Seating	Provide seats approximately every 60m along the accessible pathway route (set back from footpaths with an allocated hardstand adjacent).
M	9.17	Seating	Increase the amount of shade with seating underneath throughout the park.
M	9.18	Street Furniture	When upgraded, select street furniture (bollards, bins, seats) that provide adequate luminance contrast with the background surface.
L	9.19	Water Fountains	Maintain accessible water fountains with hardstands and circulation space.
	10	Beach Access	
M	10.1	Beach Wheelchair	To be determined once an inclusive beach strategy has been developed for the Eastern Beaches area.
M	10.2	Ramp	Provide one accessible ramp link to beach, width 1800mm, maximum gradient 1:14 and landings every 9m. Provide handrails on both sides of the ramp.

H High Priority
 M Medium Priority
 L Low Priority



Action List

Onsite Experience

DRAFT

Waverley Council

Bronte Park Universal Access Study

	Ref	Access Feature	Action
H	10.3	Stairways - promenade	Stairway access to beach - provide handrails on both sides of stairs leading to beach, and highlighting on step nosing.
M	10.4	Stairway - north end	Redesign and upgrade northern stairway to beach to include increased width, even risers, highlighting on step nosing and handrails on both sides.
M	10.5	Promenade - balustrades	Provide kerb rails to all new balustrades along promenade.
M	10.6	Promenade - linking pathway	Maintain a clear shoreline along the promenade, with no obstructions, seats set back from pathway.
	11	Bronte Baths	
H	11.1	Information	Provide information on Council website for accessible pool facilities at nearby beaches of Bondi and Clovelly.
H	11.2	Pool Access - primary stairway	Redesign and upgrade primary stairway into the pool to meet 1428.1 and provide consistent riser height. Extend handrails along the full length of stairway into pool on both sides of stairway. Extend fixed handrail along pool edge to ocean access stairway. Provide TGSIs along the top of primary stairway in accordance with AS1428.4
M	11.3	Pool Access - secondary stairway	Install continuous handrail at secondary stairway on one side due to narrowness of stairs.
H	11.4	Pool Access Stairways	Provide slip resistant treatment to both primary and secondary stairways and highlighting strips on all stair nosings.
M	11.5	Service Access Stairway	Install gates to restrict access to Service Access Stairway.
H	11.6	Balustrades - seating area	Replace balustrades at a height of 1000mm with kerbrail at a height of 150mm
M	11.7	Balustrades – viewing area	Replace balustrades at a height of 1000mm with kerbrail at a height of 150mm

H High Priority **M** Medium Priority **L** Low Priority



Action List

Onsite Experience

DRAFT

Waverley Council

Bronte Park Universal Access Study

	Ref	Access Feature	Action
H	11.8	Seating	Investigate safety risk of relocating seats adjacent to balustrades
M	11.9	Accessible Seating	Provide a range of seating options with back and arm rests at all seating areas and provide 2 x wheelchair/pram seating spaces next to seating on accessway
L	11.10	Seating - accessway	Remove and relocate 2 bench seats on accessway to viewing area
L	11.11	Seating – viewing area	Replace hardstand at top level seating area and provide kerb along hardstand edge
L	11.12	Stairway – viewing area	Reconfigure stair access to top level seating by setting stairs back from pathway with handrails and highlighting strips on nosing
L	11.13	Pathway Surfaces – viewing area	Resurface accessway to Viewing Area and provide level access to new hardstand
L	11.14	Signage	Provide identification and wayfinding signage to viewing area

H High Priority **M** Medium Priority **L** Low Priority