



South Bronte Amenities & Community Centre
Vox Populi

for
Waverley Council

panovscott



Steven

I am here often, using the direct bus from Redfern. Margaret and I use the facilities often after a swim and a walk. We don't really linger though.

The bins are often overflowing, the space inside should be larger and there should be separation between the change area and the toilets.

The new white amenities building at Bondi stands out too much. I prefer the heritage look and associate the existing building here with the family atmosphere of Bronte.

I like the brick and stone. There are painterly techniques which could be exploited to update the existing materials and the appearance of the building.



Steve

50 years I have been coming here. I use the showers, inside and out, the seating, I exercise on the roof.

I would like it if you could make it warm all the time.

No seriously, more seating out of the wind would be good and in summer somewhere to be out of the sun.

I think the concrete and brick of the existing building is ugly. And of the recent amenities buildings in the area the one in Tamarama is well integrated into the landscape.

I think the roof terrace should be retained with the current amount of space, a lot of people use it for yoga.



Rodrigo

I live in Randwick and use the toilets and outside showers at South Bronte all the time. The inside showers could be larger and the interior space gets hot in summer, though the outside showers work well.

I think the facilities should be modified to be accessible for less able people and to be more environmentally sustainable.

I think Tamarama amenities is a great example of recent coastal amenities buildings. It signifies showers and toilets but is visually recessive in the landscape, plus the interior spaces feel good.

South Bronte could be modified to be better integrated in to the context like Tamarama, with more wood finishes and garden to the edge of the roof terrace. The building should be as green as possible, I like the idea of vibrant colours.



Holly & Angela

We live in Bronte, on the opposite side. South Bronte is great for kids and families, we use the pool, the bogey hole. We especially appreciate the community.

We wouldn't change a thing about the facilities here, especially the hot water! That said the facilities should be modified to allow for the use of less able people and those with prams, and be more environmentally sustainable.

We don't have a strong opinion about the existing materials of the facilities, though don't mind the idea of brickwork.

It is good that you can see the existing sandstone cliff above and beyond the facilities. The natural landform is beautiful. Any new works could adopt materials, plants and colours from the natural environment.



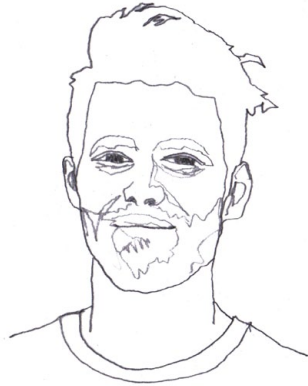
Brian & Jenny

We use the facilities, we swim, use the pool, showers, the seats, the low walls, the foreshore walk.

The existing facilities are just fine, they are a bit tricky to use if you do not know about them but otherwise, what else could you ask for, a toilet block is a toilet block!

Sure, you could do something here to make the building look better.

The roof terrace is well used. Maybe there is scope for beautification via planting but it would need to be well maintained. Native plants and flower would be a good addition to the place.



Dave

I live in Bondi Junction, my wife uses the facilities all the time, especially the warm showers.

Since we have had our baby I have noticed that baby change facilities would be worthwhile in the area.

I like the appearance of the recent Tamarama amenities building and think there should be a clock like the one that exists here integrated into the design.

The existing building appears to be robustly constructed. I think the appearance could be modified to integrate more with the sandstone.



Michael

I am a local to Bronte and have been coming here for 25 years, I use the facilities all the time because of the great aspect and as it is less crowded than other areas. I think it is important to have the pool accessible for older people, clean the pigeon poo up and to maintain the seats more.

The facilities could benefit from an additional shower and toilet in each and definitely by the introduction of more light and air movement within the spaces.

Of the recent facilities in the area I think the one at Coogee is most successful, with the change rooms built into the hill.

The existing facilities here are pretty ugly and should be more sympathetically integrated into the landscape. Maybe with more external seating that is protected from the winds.



Alexandra

I live in Strathfield but come here often, using both the facilities at South Bronte and the public amenities at the Surf Club at North Bronte.

The facilities at South Bronte could benefit from better hot water reliability and environmentally sustainable design.

Of the recent coastal amenity buildings in the council area I think Tamarama is most successful. Especially the timber external finish which would be good here at South Bronte to make the building recede into the landscape. Though I would say that things are generally good the way they currently are and maybe we should just leave them as is.

The roof terrace at South Bronte is well used and should remain but maybe with additional garden. Perhaps a small coffee kiosk and umbrellas could be included.



Thea

I like the facilities and use them when I go swimming, but I also use the park and the roof terrace. I like that it feels private here. I do not want to see a cafe in this spot. The clock is great, as are the benches for getting changed quickly.

There should be better toilets and showers. The existing building has particularly poor ventilation. I support modification to the existing structure for accessibility and environmental reasons.

I think the existing bricks are ugly, stone as an external material would be more appropriate. I am not sure about externalising the hand washing and mirrors, I understand the communal benefit but an interior alternate would be good.

I think the roof terrace should be used as it currently is but perhaps with more garden to help the building integrate with the landscape.



Annie

I come here to take surf photographs. I live in Waverley. I use the bathrooms and have noticed the clock is used by the surfers and lifeguards.

The facilities could benefit from more toilets and greater separation between wet and dry areas in the change rooms. Better tapware and soap dispensers would be beneficial, along with ventilation to allow the interior spaces to dry out when they become wet. Artificial and natural lighting is also important as the facilities are used early and late in the day in winter.

Externally more shade and seating areas would work well.

Concrete is outdated and old as well as feeling unfriendly and cold. The appearance of the building would benefit from a change.



Neil

I come here often, though have to admit that I do not use the facilities much. If I do use them it is for the toilets.

If I could change anything about the facilities it would be to make the indoors outdoors. I find the enclosed areas to be cold and smelly due to the lack of light and ventilation.

I think the facilities should be modified to be more accessible and environmentally responsible. I like the way the amenities building at Tamarama integrates with the surrounding landscape. Something similar could be done here with vegetation.

I find the existing building to be robust, reminding me of the 60's or 70's. Maybe a coffee outlet could be integrated into the roof terrace. When I was last at Tamarama there was a saxophone player, it was great.



Jon

I have been here all my life, 65 years ago I joined the Surf Club over there. I am part of the Dr Bronte Club.

I wouldn't change a thing about this place.

Actually some proper signage would be good to stop people from just walking into the community room when people are changing. And maybe accessible facilities, though they are provided at the public toilets over at the club.

I think the brown of the entrance door to the community room over there is a particular colour intrinsic to Bronte.

You could always make some changes to better integrate the building into the landscape but I think it is just fine as it is.



Charlie & Madeline

We live in Waterloo and come here often to swim, using the change room and toilet facilities.

We think the building is great and it can be left as is.

Actually, the toilets could be upgraded and it is dark inside. The facilities should be modified to allow for less able people to use them and to be more environmentally responsive.

The existing building looks outdated, it is very man-made. We like the way recent amenities buildings in the area make the building blend in with the surroundings.

The roof terrace feels like a carpark space with its concrete finishes. The space is currently really well used but perhaps the area could be softened with a planted roof.



Paul

I like Bronte because of this (gestures to the view) and the community gathering areas, it is very social and not too posh.

I use the change room, the seating out front, the clock, the lawn, the bins - which are ugly, the terrace occasionally, and I appreciate the rock sculpture.

The current facilities building could be made lighter and brighter. It is difficult to make everywhere accessible but less able users should be considered in any redesign, along with environmental efficiency.

The building could be made to integrate a little more with the surrounding landscape, the verticals are currently too prominent, but I also think it is not too bad as it is. I do like the brickwork. I also like the blues and greens of the bogey hole which could be integrated into the new work.



Sam

I am from Maroubra and use the toilets facilities at South Bronte when I come here.

I think the existing facilities could be cleaner with better provision of soap and hand dryers.

I think the facilities should be modified to be accessible though don't care if environmental sustainability initiatives are utilised in the works, that said dryers would use less paper.

The recent example of the amenities at Tamarama is nice but is a waste of money if there is not a good reason to change the existing building.

The roof should remain accessible, the more people around here the better, but there should definitely be no cafe here.



Keith

I come here every day. I use the pool, the bogie hole, the change rooms, I especially appreciate the warm shower.

If I could change anything it would be the water pressure and the floor finish, I don't walk barefoot inside. With the pool and the sea it all works. Though the existing building is a bit shabby.

I think the facilities should allow for less able people to comfortably use the amenities and the building be made to be more environmentally responsive.

The building could also fit into the environment a bit better. The existing materials are of their time, antiquated and not very sympathetic. Perhaps the roof terrace could be softened a little with planting and the colour green introduced in the new work.



Barbara

I have lived in Bronte for 30 years and like everything about the place! I use the facilities at South Bronte in summer. The toilets, showers and change rooms, but it is usually very busy. I also use the clock and bins.

More warm showers would be great, there is only one in the ladies. Maybe the facilities should be modified to be accessible and environmentally responsive.

I think the amenities at Tamarama are nice and open, and the facilities here at South Bronte could be better integrated in to the landscape but I wonder how.

The existing building materials at South Bronte are pretty ordinary, they could be more natural.



Mia & Maya

We live in Bronte & Randwick and come here often, using the change room, the toilets, clock and the bins in the area.

The toilets could be cleaner. We don't think lighting and ventilation needs to be improved, but the facilities should include ramps to allow less able people to use them and to be more environmentally responsive.

Of the recent coastal amenities buildings Marks Park looks good. We like the flat design and the use of wood on the facade. The use of wood at South Bronte would be a good alternative to the existing concrete and brick.

The roof terrace could contain more tables and chairs, along with more garden.



John

I am a Surf Club member and use the beach and facilities all the time.

I don't want to change a thing.

The wife says, the toilets should be better, the seating area expanded and the size of the building increased as a lot of people use it.

I think the roof terrace should stay as is.

The facilities should be modified to be accessible, more environmentally sustainable and to improve lighting and ventilation.



Mizpah, Matt & Betty

We live in Clovelly and do not often come to Bronte.

We have noticed the older generation using the facilities to sunbake and relax.

The roof terrace works well offering a place to sit and sunbake. The roof should remain accessible so people can use it.

The existing building could be better integrated in to the environment by using planting on the roof and the walls. Though any roof garden should not cover the whole of the roof terrace.



Meg

I grew up in Bronte, I find it to be very humble, not flashy, it hasn't really changed since I was a child.

I use the facilities, I appreciate the benches in the shade and use the clock as a meeting place. The current building has a nice balance between being sympathetic to the location but also as a landmark.

Of recent examples in the area I think that Tamarama amenities is very beautiful. I find the concrete and brickwork to be iconic, remnant of the mid century.

I think the roof terrace should accommodate barbecues and it would be nice to see a roof garden, it could help the building blend in with the landscape.



Robert

I live in Bondi but am here a lot because it is less busy, I use the toilets, the inside and outside showers and often I lie on the grass.

The outdoor showers work well, as does the warm internal one, though it needs a face-lift. I think the facilities should be modified to be more environmentally sustainable and perhaps could use more timber in the facade to better integrate the building with the surrounding landscape.

The roof terrace is perfect, I lie in the middle, though the edge could be softened with more garden.

I think the green of the grass and these low brick walls are intrinsic to Bronte.



Marie & Frida

This is our first time here, we live in Bondi. We like the separate beach and park, the barbecues and toilets.

We think the existing facilities at South Bronte should be modified to accommodate less able people, environmentally sustainable design, to feel cleaner and to remove the painted concrete which is quite ugly.

It would be nice to see a little garden up on top of the roof terrace and the facilities might introduce colours like green, brown and grey, along with native planting to make them more of this place.



Nikki

I am from Bronte and I use the facilities frequently, the showers and toilets. I often sit on the grass area with the single Banksia as it is away from the honking of the train. I have noticed the grass area with the rock sculptures is less well used.

The seating out the front of the facilities is well used and works well. I think the steps at the entrance thresholds should be removed to make the internal areas more accessible.

The existing building looks a little 70's and something a bit more like the amenities at Tamarama would work well here. I like the clock but find the surrounding colour unappealing. Perhaps the brick could be upgraded.

The roof terrace should remain accessible but the space should be extended upwards to make more space for facilities.



Tania

I am from Bronte and have been here for 62 Years. I can't swim, I walk and I use the toilets, the seats out the front and the clock.

In terms of my experience of South Bronte there are too many dogs and the concrete should be improved around the pool

Everything else is good, I love the garden.

I think the facilities should be changed to be more environmentally responsive and to allow less able people to use them.

I like the existing concrete and brick materials. I think it is not good to change them. I used to go up the roof terrace when I was younger. Bronte is beautiful.



Andrea

I live in England but visit my daughter and grandchildren who live in Bronte often. When I am here I use the facilities, The toilets and showers. I often help my grandchildren use the internal showers.

Those internal showers are very busy in summer. There should be more of them and the current buttons are too high on the wall for children to use.

Externally there could be more seating as the existing ones are normally all taken.

I am comfortable updating the materials of the building and like the idea of a planted roof to blend into the landscape. The roof terrace should remain accessible though as it is well used.



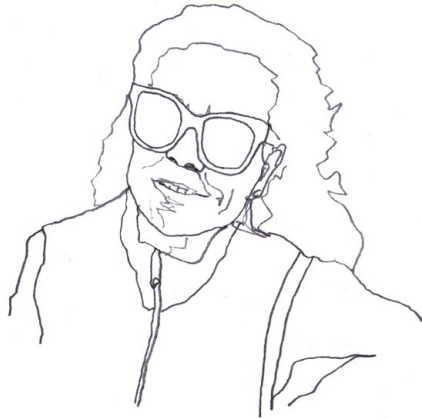
Bronte & Robin

We are visiting for the first time from the Central Coast. We like the small scale of the beach and that it is quiet.

The recent coastal amenities buildings look really nice. This one here looks like it is in need of something. It looks old fashioned. And is very boxy, but then again it speaks about what it is.

A roof garden would look pretty, to landscape it a little. The problem would be that people may destroy it.

Materials like sandstone and things that are practical and blend in with the landscape would be good to use.



Fiona

I live in Bronte and like it here as it is less busy than other beach areas like Bondi and Coogee. I used to be part of Bronte Splashes.

I use the outdoor showers in summer, the warm indoor one in winter, the clock to tell the time when swimming and walking along the beach.

Separating the toilets from the change/shower facilities would be a good modification to enable a better experience. The sinks are very tiny and there are only two showers.

I like the silvering timber of the amenities building at Tamarama.

The roof terrace here is great and should remain accessible.



Jacinta

I live in Bronte and use all of the facilities all of the time. The pool here is fantastic, good for families, child friendly and I appreciate the free parking in winter.

The existing facilities are quite dark, wet and grungy. I don't look forward to going inside.

Please make sure any new building is usable. The new facilities at Coogee are very lovely but only have external mirrors and GPO's which lack privacy. The new facilities should allow people to get ready to go straight to work and not be too cold.

The existing materials are pretty ugly and the building could be better integrated into the landscape. The roof top could be better used and shade structures integrated.



Jen & Patrick

We use the facilities here often as we live in Bronte. We used the change rooms and the showers and the toilets, the clock too. Perhaps there could be a thermometer?

We would suggest that some showers are kept inside but the majority of them are outside as it is quite busy in summer.

The change rooms are too small and there are not enough toilets.

Of the recent coastal amenities buildings in the council area Tamarama is new and nice. With a lot more room than here in South Bronte.



Chris

I am only here once every few month as I live in Ashfield.

I enjoy these kinds of coastal amenities when they are very open with lots of facilities outside.

The existing building here could be cleaner and more private, and made to be more environmentally sustainable.

I don't find the existing building too intrusive. The brickwork is okay but I don't like the concrete.

The roof terrace should remain accessible and any new works use materials that blend in, we don't want it to stand out.



Liv

I use the shower and the toilet facilities and appreciate the proximity of the existing building to the pool.

The existing interior is very dark and more lockable hot showers would make the experience of the facilities better.

The building should be modified to be more environmentally sustainable and to allow less able people to use it in the same manner everyone else does.

The existing exterior looks dated, from the 80's. It could be modified to integrate better with the surroundings. Utilising green colours and bare sandstone would help in that regard.



Tess & Rusty

We haven't been here before. We live up at Wentworth Falls.

If the facilities are to change make them sculptural and not a block, though make sure it blends in to the context.

The facilities should be modified to be more environmentally sustainable and accessible to both able and less able people equally.

The existing building is not doing anything too crazy, it looks fine. The outlook from the roof terrace is nice, it could connect through to the other side.

Iron that is rock colour and native planting such as small coastal banksia could work well here.



Markus

I live in Bronte and use the seats, change room and the shower. The swimming pool is very important to me. I would like to see hot showers and better water pressure, along with more shade.

The existing lighting and ventilation could be improved, it is very humid inside.

I don't think the existing building should be modified to be more environmentally sustainable, but it should be more accessible.

The existing concrete material is in good condition, the brickwork is a material from last century.

The roof terrace is well used. The roof could be a bright colour, not just grey concrete and shade structures in the afternoon would be good.



Stephen & Alyssa

We use the showers here every now and then after a swim.

The toilets should be freshened up. The showers brought outside so that both my young daughter and I don't have to be split up to use them after we have a swim.

We find the signage here really poor. Better way finding would allow people to understand that the coastal walk goes up the hill and behind the facilities at this point.

Drinking fountain facilities would be a good addition here.

The concrete material is not pleasing, nor the painted concrete around the roof. The clock is good but ugly in its current state. It could be modified to be brought into this century.



Jan

I am currently living with my daughter in Bronte. I use the pool, beach, showers, the change rooms sometimes.

I think the facilities should include a cafe, the traditional toilets retained and layered with trees and greenery. The promenade should be kept.

The interiors should be lighter. The facilities modified to enable less mobile people to use them and to be more environmentally sustainable.

Of the recent amenities buildings in the area the one at Tamarama is beautifully understated and works well with the surroundings.



Rosalie

I am living in Bondi though just arrived from Germany 2 weeks ago so have yet to use the facilities.

I don't like the concrete and think the building could be made to be more sympathetically integrated into the surroundings.

I like plants so think the roof terrace could incorporate more planting. I like the roof of the amenities at North Bondi and the colours. It brings the building closer to nature for me.

Any new works could incorporate colours from the bay and the greens of the park.



Greg

I have been coming here for 68 years, since I was 2. I helped build the sandstone bridge up in the gully. I am a member of Dr Bronte.

The only thing that would make this place better is a BBQ!

The lawn out the front is not working out that well. A ramp to the facilities and the bogey hole for less able people would be good. The internal lighting and ventilation could be better, maybe glass bricks would work well.

The existing building is fine for what it is. We don't need the Taj Mahal!



Ahlen & Jeung

We use the toilet facilities at South Bronte when we are here. Though they are dark and could be more clean. Often there is no soap.

There should be more toilets, they should be cleaner and there should be soap.

The brickwork, painted concrete and handrail of the existing building are ugly, as is the clock.

The recent examples of amenities buildings in council area look good. The building here could be more sympathetically integrated into the landscape setting.



Orla & Aine

We come here once a week, from Coogee were we live. We use the beach and like the scenery, it is not too touristy.

We never use the facilities here at South Bronte because it looks dirty.

We think the facilities could be modified to be more sympathetically integrated into the landscape. The recent amenities building at Tamarama is an example which does a similar thing.

We don't mind the existing materials here, they are fine.

The roof terrace could be made better with more usable space.

For 5 days in late July 2018, 5 different members of panovscott Architects spent time at South Bronte and had a number of conversations with the people that happened to be in the vicinity about the place and how it might change.

There was no selection process for these discussions, anyone who was willing to offer an opinion was heard.

The previous pages contain an edited version of those conversations, whilst the notes which inform them are recorded below in full.

Michael

What do you like about Bronte, the place and the facilities?

Great aspect, some green, sandstone, less crowded than other areas.

Do you use the facilities at South Bronte?

Yes, The toilets, showers, change rooms, would use community rooms if they were more accessible, seating out the front, roof terrace, clock, bins, lawn. Kids like to climb the rock sculpture.

If you could make some part of your experience of South Bronte facilities better, what would it be?

Seats looked after better - painting has been neglected, pigeon poo cleaned.

Which of the facilities do you think works well and what could be improved?

Important to have pool, safe for older people to use steps to men's Bogey Hole.

Do you think ventilation and lighting could be improved in the change/community rooms at South Bronte?

Definitely could be, glazing to bring light and warmth in, number of toilets and showers okay but could use an extra one of each, particularly an extra shower.

Do you think the facilities should be modified to allow for the use of less able people?

Should be if it can be, but then wheelchair bound people can't get to pool.

Do you think the facilities should be modified to be more environmentally sustainable?

Should be a focus - hot water by solar?

Have you used or seen the new facilities at North Bondi, Tamarama, Marks Park and Coogee? What do you think about those facilities?

Particularly Coogee - change rooms built inside of hill, undercover area where showers are.

Do you think the existing building at South Bronte could be more sympathetically integrated into its landscape setting?

Easily! It is currently pretty ugly

What do you think of the materials of the existing building? The concrete frame? The brickwork?

Not attached to general style, but would you spend money to make it different?

Do you think the roof terrace should be accessible space? If so, what uses should it accommodate?

Maybe additional seating to make it more used, could be sheltered from wind.

Are their any particular materials, plants or colours that you think are intrinsic to Bronte?

Sandstone, green (vegetation)

Alexandra

Do you use the facilities at South Bronte?

Yes, the change room and warm showers and toilets

If you could make some part of your experience of South Bronte facilities better, what would it be?

More cleaning, hot water reliability

Do you think ventilation and lighting could be improved in the change/community rooms at South Bronte?

Summer quite hot - use surf club for better ventilation and because it is bigger

Do you think the facilities should be modified to allow for the use of less able people?

They can use the Surf club or perhaps a separate wc can be added.

Do you think the facilities should be modified to be more environmentally sustainable?

Yes

Have you used or seen the new facilities at North Bondi, Tamarama, Marks Park and Coogee? What do you think about those facilities?

Tamarama is good but I like here the way it is

Do you think the roof terrace should be accessible space? If so, what uses should it accommodate?

A rooftop cafe would be good, a small kiosk, with umbrellas

If not, should it contain a garden or some other type of non-trafficable roof finish?

Garden

Are their any particular materials, plants or colours that you think are intrinsic to Bronte?

Not really, maybe timber like at Tamarama

Rodrigo

Do you use the facilities at South Bronte?

Yes, the toilets and shower (outside)

If you could make some part of your experience of South Bronte facilities better, what would it be?

Inside bathroom bigger with more showers

Which of the facilities do you think works well and what could be improved?

Outdoor showers - works well

Do you think ventilation and lighting could be improved in the change/community rooms at South Bronte?

It gets hot in summer

Do you think the facilities should be modified to allow for the use of less able people?

Yes

Do you think the facilities should be modified to be more environmentally sustainable?

Yes

Have you used or seen the new facilities at North Bondi, Tamarama, Marks Park and Coogee? What do you think about those facilities?

Tamarama looks good and signifies its use well. The showers and toilets inside are good.

Do you think the existing building at South Bronte could be more sympathetically integrated into its landscape setting?

Yes like Tamarama

What do you think of the materials of the existing building? The concrete frame? The brickwork?

More wood

Do you think the roof terrace should be accessible space? If so, what uses should it accommodate?

It is good - keep it

If not, should it contain a garden or some other type of non-trafficable roof finish?

Garden to the edge

Are their any particular materials, plants or colours that you think are intrinsic to Bronte?

Not really - green as possible - nature

Holly & Angela

What do you like about Bronte, the place and the facilities?

Everything - it is protected, the reserve, great for kids and families, pool, bogey hole, community.

Do you use the facilities at South Bronte?

Yes, not the outdoor showers, the toilets, showers, change rooms, roof terrace (sometimes), the clock, bins, lawn.

If you could make some part of your experience of South Bronte facilities better, what would it be?

Nothing

Which of the facilities do you think works well and what could be improved?

Hot water

Do you think ventilation and lighting could be improved in the change/community rooms at South Bronte?

Okay

Do you think the facilities should be modified to allow for the use of less able people?

Of course, also prams

Do you think the facilities should be modified to be more environmentally sustainable?

Yes always

Have you used or seen the new facilities at North Bondi, Tamarama, Marks Park and Coogee? What do you think about those facilities?

North Bondi occasionally - it is very spacious

Do you think the existing building at South Bronte could be more sympathetically integrated into its landscape setting?

Good that you can see natural landform behind it

What do you think of the materials of the existing building? The concrete frame? The brickwork?

The brickwork is good

Do you think the roof terrace should be accessible space? If so, what uses should it accommodate?

Yoga, informal space

If not, should it contain a garden or some other type of non-trafficable roof finish?

No, beautiful stone behind

Are their any particular materials, plants or colours that you think are intrinsic to Bronte?

Taking the natural environment, greenery

Thea

What do you like about Bronte, the place and the facilities?

That they exist. I like the park and the roof - it feels almost private when you find your own spot to sit around the building. It feels secluded even though you are out in the open. I love the pool and the privacy of the location. I don't want to see cafe in this spot.

Do you use the facilities at South Bronte?

I use it when swimming. The clock is good, benches for quickly getting changed, good for small kids.

Which of the facilities do you think works well and what could be improved?

Better toilets and change rooms - more and improved drainage. I don't expect glamour. A baby change would be great.

Do you think ventilation and lighting could be improved in the change/community rooms at South Bronte?

It's crap! It gets away with it because the door is always open.

Do you think the facilities should be modified to allow for the use of less able people?

Well that would be good as long as it is the same.

Do you think the facilities should be modified to be more environmentally sustainable?

That would be great.

Have you used or seen the new facilities at North Bondi, Tamarama, Marks Park and Coogee? What do you think about those facilities?

All of a similar aesthetic, simple, low lying. Not sure about externalising hand washing and mirrors - be great to have an alternative.

Do you think the existing building at South Bronte could be more sympathetically integrated into its landscape setting?

Well, it's a very concrete landscape so a stone facade wouldn't be a problem.

What do you think of the materials of the existing building? The concrete frame? The brickwork?

The bricks are ugly.

Do you think the roof terrace should be accessible space? If so, what uses should it accommodate?

Yes. It feels more like it's for club use but I like to looking at it, thinking it's a space other people use.

Annie

What do you like about Bronte, the place and the facilities?

I am a surf photographer and like to sit along the walkway and take photos of surfers, occasionally I will use roof terrace to get shots.

Do you use the facilities at South Bronte?

Yes, occasionally, the bathroom and toilets, roof terrace occasionally, the clock is used by surfers and lifeguards while on beach or in water

If you could make some part of your experience of South Bronte facilities better, what would it be?

Reduce amount of water on floors in bathrooms, I worry about my things getting wet, particularly my camera. Thinks it would be a waste of money to upgrade facilities without increasing capacity of toilets.

Which of the facilities do you think works well and what could be improved?

Separation of dry and wet areas - change rooms, toilets and showers arranged better. More toilet facilities and seating areas, upgraded soap and taps, more shading devices.

Do you think ventilation and lighting could be improved in the change/community rooms at South Bronte?

Better ventilation/air movement so it doesn't stay wet as long, artificial lighting important in early/late hours of the day for people who swim in winter, arriving as early as 5am

Do you think the facilities should be modified to allow for the use of less able people?

Make more accessible by removing steps

Have you used or seen the new facilities at North Bondi, Tamarama, Marks Park and Coogee? What do you think about those facilities?

Likes functionality of Tamarama facilities, suggested mosaics (seen at Bondi) could be used to create feature wall, reflect colours of the ocean

What do you think of the materials of the existing building? The concrete frame? The brickwork?

Concrete is "outdated and old, unfriendly and cold". Not opposed to changes in the facade.

Do you think the roof terrace should be accessible space? If so, what uses should it accommodate?

Yes, it is used for many things - yoga, seating, sunbaking, etc

Brian & Jenny

What do you like about Bronte, the place and the facilities?

Eastern suburbs - can't get much better, walk from where they stay - world class!

Do you use the facilities at South Bronte?

Yes. Swim, pool, showers, sitting on wall, walks.

Toilets, showers, the clock, change rooms, the lawn.

If you could make some part of your experience of South Bronte facilities better, what would it be?

I like it the way it is. Women's showers no doors

Which of the facilities do you think works well and what could be improved?

Natural environment, connected walks, pool all work well.

Do you think ventilation and lighting could be improved in the change/community rooms at South Bronte?

Not sure, everything is adequate. Okay if you know but tricky for visitors

Do you think the facilities should be modified to

allow for the use of less able people?

Yes, ramps around park are good - accessible at surf club

Do you think the facilities should be modified to be more environmentally sustainable?

What more could we ask for? A toilet block is a toilet block.

Have you used or seen the new facilities at North Bondi, Tamarama, Marks Park and Coogee? What do you think about those facilities?

Tamarama has beautiful coffee space,

Do you think the existing building at South Bronte could be more sympathetically integrated into its landscape setting?

Sure, you could do something to look better, modernise the place so it doesn't stand out so much.

What do you think of the materials of the existing building? The concrete frame? The brickwork?

Of it's time, wood gets shabby, it is low maintenance

Do you think the roof terrace should be accessible space? If so, what uses should it accommodate?

See a lot of people there - yoga and exercise, maybe you could cover it with a shade structure.

If not, should it contain a garden or some other type of non-trafficable roof finish?

May be scope for landscape beautification, needs to be maintained.

Are their any particular materials, plants or colours that you think are intrinsic to Bronte?

Native plants - flowers and colours towards Tamarama.

Dave

Do you use the facilities at South Bronte?

My wife does for the warm shower

Which of the facilities do you think works well and what could be improved?

Better change facilities for child - has a young baby

Do you think ventilation and lighting could be improved in the change/community rooms at South Bronte?

Yes, like Tamarama

Do you think the facilities should be modified to allow for the use of less able people?

Definitely

Do you think the facilities should be modified to be more environmentally sustainable?

Yes, solar

Do you think the existing building at South Bronte could be more sympathetically integrated into its landscape setting?

Yes, sandstone

What do you think of the materials of the existing building? The concrete frame? The brickwork?

Good construction

Do you think the roof terrace should be accessible space? If so, what uses should it accommodate?

Yes, sunbathing

If not, should it contain a garden or some other type of non-trafficable roof finish?

No - maybe not. Grow garden somewhere else.

Neil

Do you use the facilities at South Bronte?

Not often, just the toilets

If you could make some part of your experience of South Bronte facilities better, what would it be?

I would make the indoors or outdoors. It is currently enclosed, cold, smelly

Do you think the facilities should be modified to allow for the use of less able people?

Yes

Do you think the facilities should be modified to be more environmentally sustainable?

Yes

Have you used or seen the new facilities at North Bondi, Tamarama, Marks Park and Coogee? What do you think about those facilities?

Tamarama - integration with background

What do you think of the materials of the existing building? The concrete frame? The brickwork?

Robust - classic 60s or 70s

Do you think the roof terrace should be accessible space? If so, what uses should it accommodate?

Yes accessible, coffee outlet popular, sax player, tamarama

If not, should it contain a garden or some other type of non-trafficable roof finish?

Sit and have a coffee

Are their any particular materials, plants or colours that you think are intrinsic to Bronte?

Those like the Tamarama photo

Charlie & Madeline

What do you like about Bronte, the place and the facilities?

We like the pool and the beach

Do you use the facilities at South Bronte?

Yes, the toilets and showers, sit on the park benches.

If you could make some part of your experience of South Bronte facilities better, what would it be?

Leave it as it is, it is fine for us.

Which of the facilities do you think works well and what could be improved?

The pool is great, toilets can always be upgraded.

Do you think ventilation and lighting could be improved in the change/community rooms at South Bronte?

Seems dark, could improve lighting.

Do you think the facilities should be modified to allow for the use of less able people?

Yes.

Do you think the facilities should be modified to be more environmentally sustainable?

Definitely.

Have you used or seen the new facilities at North Bondi, Tamarama, Marks Park and Coogee? What do you think about those facilities?

Not been on the way. Like how they blend into the landscape.

What do you think of the materials of the existing

building? The concrete frame? The brickwork?

Very man-made, fits with cliff and SLSC but a bit outdated.

Do you think the roof terrace should be accessible space? If so, what uses should it accommodate?

Only old people use it for tanning, it feels like carpark space with its concrete finishes, a green roof might be more inviting to others. We don't want to exclude current users but make it more accessible for all.

Are their any particular materials, plants or colours that you think are intrinsic to Bronte?

Materials should blend with trees and rocks, use of plants that are already here.

Sam

Do you use the facilities at South Bronte?

Yes, the toilets

If you could make some part of your experience of South Bronte facilities better, what would it be?

Make it a littler cleaner

Which of the facilities do you think works well and what could be improved?

No soap or dryer

Do you think ventilation and lighting could be improved in the change/community rooms at South Bronte?

Could be improved

Do you think the facilities should be modified to allow for the use of less able people?

Yes

Do you think the facilities should be modified to be more environmentally sustainable?

Don't care. Dryer would use less paper.

Have you used or seen the new facilities at North Bondi, Tamarama, Marks Park and Coogee? What do you think about those facilities?

Tamarama is nice

Do you think the existing building at South Bronte could be more sympathetically integrated into its landscape setting?

Waste of money - only if it needs fixing

Do you think the roof terrace should be accessible space? If so, what uses should it accommodate?

Yes, the more people around the better, more friendly atmosphere. Definitely no cafe.

Barbara
What do you like about Bronte, the place and the facilities?

Everything! I have lived here for 30 years.

Do you use the facilities at South Bronte?

Yes, in the summer. The toilets, showers and change rooms in the summer but it is usually very busy. I also use the clock and bins.

If you could make some part of your experience of South Bronte facilities better, what would it be?

More warm showers - there is only one in the ladies.

Do you think ventilation and lighting could be improved in the change/community rooms at South Bronte?

It is okay.

Do you think the facilities should be modified to

allow for the use of less able people?

Probably

Do you think the facilities should be modified to be more environmentally sustainable?

I'm not sure

Have you used or seen the new facilities at North Bondi, Tamarama, Marks Park and Coogee? What do you think about those facilities?

Tamarama has good facilities, they are nice and open.

Do you think the existing building at South Bronte could be more sympathetically integrated into its landscape setting?

Probably, but how?

What do you think of the materials of the existing building? The concrete frame? The brickwork?

Pretty ordinary - doesn't worry me but maybe they could be more natural.

Do you think the roof terrace should be accessible space? If so, what uses should it accommodate?

Yoga! Sounds good.

If not, should it contain a garden or some other type of non-trafficable roof finish?

Always a good idea

Are their any particular materials, plants or colours that you think are intrinsic to Bronte?

Not really - beautiful open space.

John

Do you use the facilities at South Bronte?

Uses beach and facilities all the time, surf club member

If yes, which ones? The toilets, showers, change rooms, community rooms, seating out the front, roof terrace, the clock, rock sculpture, the bins, the lawn?

Everything

If you could make some part of your experience of South Bronte facilities better, what would it be?

Doesn't want to change a thing.

Which of the facilities do you think works well and what could be improved?

John says nothing. Wife would like better toilets. Larger seating areas. Existing building could be expanded a little - a lot of people use it.

Do you think ventilation and lighting could be improved in the change/community rooms at South Bronte?

Yes

Do you think the facilities should be modified to allow for the use of less able people?

Yes

Do you think the facilities should be modified to be more environmentally sustainable?

Yes, solar power

Have you used or seen the new facilities at North Bondi, Tamarama, Marks Park and Coogee? What do you think about those facilities?

Tamarama is nice

Do you think the roof terrace should be accessible space? If so, what uses should it accommodate?

Fine as is

Paul

What do you like about Bronte, the place and the facilities?

This [gestures to view], community gathering areas, very social, not too posh

Do you use the facilities at South Bronte?

Yes, the showers, seating out front, the clock, the lawn, the bins - ugly, the terrace occasionally, appreciates the rock sculpture

If you could make some part of your experience of South Bronte facilities better, what would it be?

Doesn't need too much but could be fresher and newer

Which of the facilities do you think works well and what could be improved?

It's reasonably clean.

Do you think ventilation and lighting could be improved in the change/community rooms at South Bronte?

It is currently dark, dingy, wet and damp. It could be made brighter and drier.

Do you think the facilities should be modified to allow for the use of less able people?

Can't avoid but difficult to make everywhere accessible.

Do you think the facilities should be modified to be more environmentally sustainable?

Energy efficient, reduce waste

Have you used or seen the new facilities at North Bondi, Tamarama, Marks Park and Coogee? What do you think about those facilities?

Tamarama works well and it doesn't impose on area, Coogee has an industrial feel

Do you think the existing building at South Bronte could be more sympathetically integrated into its landscape setting?

Doesn't work too badly

What do you think of the materials of the existing building? The concrete frame? The brickwork?

Verticals too heavy/prominent. I don't mind the bricks.

Do you think the roof terrace should be accessible space? If so, what uses should it accommodate?

Already surrounded by gardens, could be tidier

Are their any particular materials, plants or colours that you think are intrinsic to Bronte?

Blues and greens of Bogey Hole

Keith

Do you use the facilities at South Bronte?

Come every day. Use the pool, bogey hole, change rooms, warm shower

If you could make some part of your experience of South Bronte facilities better, what would it be?

Pressure, tidy showers, don't want to walk bare foot

Do you think ventilation and lighting could be improved in the change/community rooms at South Bronte?

No

Do you think the facilities should be modified to allow for the use of less able people?

Yes

Do you think the facilities should be modified to be more environmentally sustainable?

Yes

Do you think the existing building at South Bronte could be more sympathetically integrated into its landscape setting?

It could better fit into the environment

What do you think of the materials of the existing building? The concrete frame? The brickwork?

Antiquated of era - non sympathetic

Do you think the roof terrace should be accessible space? If so, what uses should it accommodate?

Never noticed - exercise and yoga

If not, should it contain a garden or some other type of non-trafficable roof finish?

Could be softened

Are their any particular materials, plants or colours that you think are intrinsic to Bronte?

Greens colour

Mia & Maya

Do you use the facilities at South Bronte?

Yes, the change rooms, toilets, clock and bins

If you could make some part of your experience of South Bronte facilities better, what would it be?

Clean toilets

Do you think ventilation and lighting could be improved in the change/community rooms at South Bronte?

No

Do you think the facilities should be modified to allow for the use of less able people?

Yes, ramps

Do you think the facilities should be modified to be more environmentally sustainable?

Yes

Have you used or seen the new facilities at North Bondi, Tamarama, Marks Park and Coogee? What do you think about those facilities?

Look good. Marks Park especially

Do you think the existing building at South Bronte could be more sympathetically integrated into its landscape setting?

Yes

What do you think of the materials of the existing building? The concrete frame? The brickwork?

We like wood

Do you think the roof terrace should be accessible space? If so, what uses should it accommodate?

Tables and chairs

If not, should it contain a garden or some other type of non-trafficable roof finish?

Yes

Are their any particular materials, plants or colours that you think are intrinsic to Bronte?

Lots of different colour, green/blue

John

Do you use the facilities at South Bronte?

Uses beach and facilities all the time, surf club member

If you could make some part of your experience of South Bronte facilities better, what would it be?

Doesn't want to change a thing.

Which of the facilities do you think works well and what could be improved?

John says nothing. Wife would like better toilets. Larger seating areas. Existing building could be expanded a little - a lot of people use it.

Do you think ventilation and lighting could be improved in the change/community rooms at South Bronte?

Yes

Do you think the facilities should be modified to allow for the use of less able people?

Yes

Do you think the facilities should be modified to be more environmentally sustainable?

Yes, solar power

Have you used or seen the new facilities at North Bondi, Tamarama, Marks Park and Coogee? What do you think about those facilities?

Tamarama is nice

Do you think the roof terrace should be accessible space? If so, what uses should it accommodate?

Fine as is

Meg

What do you like about Bronte, the place and the facilities?

Very humble, not flashy, hasn't changed since she was a child, nostalgic place for her.

Do you use the facilities at South Bronte?

Yes, mostly when walking, benches in shade. The clock is good as a meeting place.

If you could make some part of your experience of South Bronte facilities better, what would it be?

Hard to maintain cleanliness.

Which of the facilities do you think works well and what could be improved?

Good location, enough showers and toilets, very clear siting - a nice landmark for meeting friends.

Do you think ventilation and lighting could be improved in the change/community rooms at South Bronte?

I don't know, enough lights to feel safe but they're not aesthetically pleasing.

Do you think the facilities should be modified to allow for the use of less able people?

Yes

Do you think the facilities should be modified to be more environmentally sustainable?

Yes

Have you used or seen the new facilities at North Bondi, Tamarama, Marks Park and Coogee? What do you think about those facilities?

Tamarama is very beautiful, but there is something nice about the humble nature of South Bronte, keeping it real, not that fancy.

Do you think the existing building at South Bronte could be more sympathetically integrated into its landscape setting?

Colours are quite good. It may be nice to integrate the building into landscape but with its current size it may lose its prominence, which currently has a nice balance between being sympathetic to the location but also as a landmark.

What do you think of the materials of the existing building? The concrete frame? The brickwork?

Iconic of mid-century - nostalgia

Do you think the roof terrace should be accessible space? If so, what uses should it accommodate?

Barbecues

If not, should it contain a garden or some other type of non-trafficable roof finish?

It would be nice to see a roof garden - it could help it to blend in with landscape.

Are their any particular materials, plants or colours that you think are intrinsic to Bronte?

Green and grey. Native seaside plants - Pigface.

Tania

What do you like about Bronte, the place and the facilities?

I've been here 62 years, Bronte's a nice one, the best.

Do you use the facilities at South Bronte?

Can't swim, I walk. I use the toilets a little, seating out front, the clock, paths

If you could make some part of your experience of South Bronte facilities better, what would it be?

There are too many dogs, improve through concrete around pool.

Which of the facilities do you think works well and what could be improved?

Everything else, loves garden

Do you think the facilities should be modified to allow for the use of less able people?

Yes, that would be a good thing.

Have you used or seen the new facilities at North Bondi, Tamarama, Marks Park and Coogee?

What do you think about those facilities?

Okay, no problem

Do you think the existing building at South Bronte could be more sympathetically integrated into its landscape setting?

Plenty garden

What do you think of the materials of the existing building? The concrete frame? The brickwork?

Okay, looks nice, no good to change.

Do you think the roof terrace should be accessible space? If so, what uses should it accommodate?

When I was young I went up there

Are their any particular materials, plants or colours that you think are intrinsic to Bronte?

Bronte is so beautiful

Mizpah, Matt & Betty

Do you use the facilities at South Bronte?

Not often, the facilities are mostly used by older generations throughout the week - sun baking and relaxing

Which of the facilities do you think works well and

what could be improved?

The accessible roof works well, providing a place to sit and sunbake

Do you think the existing building at South Bronte could be more sympathetically integrated into its landscape setting?

The building could be integrated more using green roof or green walls

Do you think the roof terrace should be accessible space? If so, what uses should it accommodate?

Believe that it should stay accessible so that its current users don't lose their seating areas.

If not, should it contain a garden or some other type of non-trafficable roof finish?

Likes the green roof idea but believes there needs to remain some accessible space. The green roof should not cover the entire space.

Robert

Do you use the facilities at South Bronte?

Toilets, showers inside and out, the seats and lawns.

If you could make some part of your experience of South Bronte facilities better, what would it be?

Dated nature of toilets. Higher brick work wall out here for seating

Which of the facilities do you think works well and what could be improved?

Outdoor showers work well and warm indoor shower, although needs a face-lift

Do you think the facilities should be modified to be more environmentally sustainable?

Yes

Have you used or seen the new facilities at North Bondi, Tamarama, Marks Park and Coogee? What do you think about those facilities?

Too much use at North Bondi - how frequently it is cleaned. Marks Park under-used

Do you think the existing building at South Bronte could be more sympathetically integrated into its landscape setting?

Yes - used of timber would be good

What do you think of the materials of the existing building? The concrete frame? The brickwork?

I find it okay though am open to other colours or materials. Timber okay.

Do you think the roof terrace should be accessible space? If so, what uses should it accommodate?

Perfect - no change

If not, should it contain a garden or some other type of non-trafficable roof finish?

Garden edges

Are their any particular materials, plants or colours that you think are intrinsic to Bronte?

Green grass, low brick walls

Nikki

What do you like about Bronte, the place and the facilities?

Likes the way the walkway curves around between the pool and the amenities block, building should not

encroach on or alter this in any way

Do you use the facilities at South Bronte?

Yes, the showers and toilets. Also frequently sit on the grass area with the single tree as it is far away from the train, which honks and makes noise all day in summer. The grass with the rock sculpture is less popular.

Which of the facilities do you think works well and what could be improved?

Seating areas work well - many people like to sit around the areas right by the building

Do you think the facilities should be modified to allow for the use of less able people?

Believe the step could be removed and possibly replaced with ramp

Have you used or seen the new facilities at North Bondi, Tamarama, Marks Park and Coogee? What do you think about those facilities?

Like Tamarama and would not be opposed to something like that

What do you think of the materials of the existing building? The concrete frame? The brickwork?

"It looks a little 70s" - Like the clock but find the colour around it unappealing and perhaps the brick could be upgraded.

Do you think the roof terrace should be accessible space? If so, what uses should it accommodate?

The roof should remain accessible but think there is room to extend upwards to create more space for facilities.

Andrea

What do you like about Bronte, the place and the facilities?

Likes the family atmosphere, that it is a family area, good facilities, pools, safe for kids to swim

Do you use the facilities at South Bronte?

Visits Bronte regularly as daughter and grandchildren live here, usually in Summer. Uses the facilities when visiting.

Which ones? The toilets, showers, change rooms, community rooms, seating out the front, roof terrace, the clock, rock sculpture, the bins, the lawn?

Toilets and showers - indoor showers to take grandchildren.

If you could make some part of your experience of South Bronte facilities better, what would it be?

Shower button a little high for small children to reach it, more space inside, more seating as most of them are taken up by locals

Which of the facilities do you think works well and what could be improved?

Indoor showers are very busy in summer, very popular - the amount of showers could be improved

Do you think the existing building at South Bronte could be more sympathetically integrated into its landscape setting?

I like the idea of using trees and a green roof to blend into the landscape

What do you think of the materials of the existing

building? The concrete frame? The brickwork?

We are okay with updating the materials but we think there may be opposition

Do you think the roof terrace should be accessible space? If so, what uses should it accommodate?

Keep it accessible, it is regularly used for yoga

If not, should it contain a garden or some other type of non-trafficable roof finish?

Garden roof would be nice to soften appearance

Bronte & Robin

What do you like about Bronte, the place and the facilities?

They like that it is a little beach and that it's quiet.

Do you use the facilities at South Bronte?

No - it is their first time visiting.

Do you think the facilities should be modified to allow for the use of less able people?

Yes.

Do you think the facilities should be modified to be more environmentally sustainable?

Yes.

Have you used or seen the new facilities at North Bondi, Tamarama, Marks Park and Coogee? What do you think about those facilities?

We think they're really nice - this one looks like its in need of something. It looks old-fashioned.

Do you think the existing building at South Bronte could be more sympathetically integrated into its landscape setting?

Yeah, for sure. It is very boxy, but then again, it speaks out about what it is.

What do you think of the materials of the existing building? The concrete frame? The brickwork?

She would use practical things that are good for the beach.

Do you think the roof terrace should be accessible space? If so, what uses should it accommodate?

Good viewing platform, good for recreation.

If not, should it contain a garden or some other type of non-trafficable roof finish?

A roof garden would look pretty - to landscape it a little. The problem is that people may destroy it.

Are their any particular materials, plants or colours that you think are intrinsic to Bronte?

Sandstone and other materials that blend in to the landscape

Jacinta

What do you like about Bronte, the place and the facilities?

Pool is fantastic. It is great that it is free. Family oriented. Free parking in winter. Child friendly.

Do you use the facilities at South Bronte? Yes.

If yes

Which ones? The toilets, showers, change rooms, community rooms, seating out the front, roof terrace, the clock, rock sculpture, the bins, the lawn?

Everything. It is nice that the showers inside are warm because the new amenities at Coogee only have cold

showers.

If you could make some part of your experience of South Bronte facilities better, what would it be?

Quite dark, wet and grungy.

Which of the facilities do you think works well and what could be improved?

Not many places that are step-free and accessible for prams/wheelchairs. There are also not many change rooms for babies.

Do you think ventilation and lighting could be improved in the change/community rooms at South Bronte?

Yes, it is very dark and there are birds nesting - "I don't look forward to going in there"

Do you think the facilities should be modified to allow for the use of less able people?

Yes, really lovely designs are great but make sure they're usable. At coogee there are no mirrors or GPOs inside - you have to go outside to shared facilities. Make sure people can get ready to go straight to work and it's not too cold for work.

Do you think the facilities should be modified to be more environmentally sustainable? Yes, absolutely. **Have you used or seen the new facilities at North Bondi, Tamarama, Marks Park and Coogee? What do you think about those facilities?**

Tamarama looks pretty but a bit cramped.

Do you think the existing building at South Bronte could be more sympathetically integrated into its landscape setting?

Yes, all the examples we have are lovely and are integrated nicely.

What do you think of the materials of the existing building? The concrete frame? The brickwork?

Pretty ugly

Do you think the roof terrace should be accessible space? If so, what uses should it accommodate?

Yes, make it more functional. It is quite under-utilised. Provide shade structures.

If not, should it contain a garden or some other type of non-trafficable roof finish?

Usable space

Are their any particular materials, plants or colours that you think are intrinsic to Bronte?

Tamarama colours, rock colours, sandy oranges and grey

Chris

Do you use the facilities at South Bronte?

Only visits Bronte every few months so doesn't use facilities very often.

If yes, which ones? The toilets, showers, change rooms, community rooms, seating out the front, roof terrace, the clock, rock sculpture, the bins, the lawn?

Standard for the area

If you could make some part of your experience of South Bronte facilities better, what would it be?

Enjoys public spaces that are very open - have facilities (taps/showers/etc) on the outside

Do you think ventilation and lighting could be

improved in the change/community rooms at South Bronte?

Have more facilities outside in the open

Do you think the facilities should be modified to be more environmentally sustainable?

More the better

Have you used or seen the new facilities at North Bondi, Tamarama, Marks Park and Coogee? What do you think about those facilities?

Cleaner and more private

Do you think the existing building at South Bronte could be more sympathetically integrated into its landscape setting?

Doesn't find it intrusive

What do you think of the materials of the existing building? The concrete frame? The brickwork?

Brickwork is okay but does not like concrete

Do you think the roof terrace should be accessible space? If so, what uses should it accommodate?

Yes

Are their any particular materials, plants or colours that you think are intrinsic to Bronte?

Colours that blend in - don't want it to stand out

Tess & Rusty

Do you use the facilities at South Bronte?

We haven't been before and haven't used the facilities

Which of the facilities do you think works well and what could be improved?

If you are going to change building making it sculptural and not just a block, make sure it blends in.

Do you think the facilities should be modified to allow for the use of less able people?

Yes

Do you think the facilities should be modified to be more environmentally sustainable?

Yes

Have you used or seen the new facilities at North Bondi, Tamarama, Marks Park and Coogee? What do you think about those facilities?

No, I haven't seen them but they look unobtrusive.

Do you think the existing building at South Bronte could be more sympathetically integrated into its landscape setting?

It is not doing anything crazy - looks fine

Do you think the roof terrace should be accessible space? If so, what uses should it accommodate?

Could it connect through to other side. The outlook is nice.

Are their any particular materials, plants or colours that you think are intrinsic to Bronte?

Coastal Banksia (not too tall), blend it in, iron rock colour

Fiona

What do you like about Bronte, the place and the facilities?

Likes that it is quiet, less busy when compared with other beaches in the area like Bondi and Coogee

Do you use the facilities at South Bronte?

Yes. I used to be part of the Bronte Splashes, a winter swim club that would use the pool and the facilities quite frequently. I use the showers, change rooms, the clock to tell time while swimming and walking along beach. In summer I use the outdoor showers but in winter I prefer the warm indoor showers.

If you could make some part of your experience of South Bronte facilities better, what would it be?

More showers, separate toilets and change room to create more privacy as currently all in one room.

Which of the facilities do you think works well and what could be improved?

The sinks are tiny and there is only one, only two showers in womens change rooms

Have you used or seen the new facilities at North Bondi, Tamarama, Marks Park and Coogee?

Tamarama is nice, likes the silvering timber

What do you think about those facilities? Do you think the roof terrace should be accessible space? If so, what uses should it accommodate?

Yes, sun bakers use it a lot.

Jen & Patrick

Do you use the facilities at South Bronte?

Yes, the toilets, showers, clock to read time - could use temperature gauge?

If you could make some part of your experience of South Bronte facilities better, what would it be?

Keep some showers inside but outside showers are better in summer

Which of the facilities do you think works well and what could be improved?

Change rooms are too small, could use more of everything.

Have you used or seen the new facilities at North Bondi, Tamarama, Marks Park and Coogee?

Tamarama is new and nice, more room than Bronte

Liv

Do you use the facilities at South Bronte?

Yes, the toilets and change rooms

If you could make some part of your experience of South Bronte facilities better, what would it be?

More lockable hot showers

Which of the facilities do you think works well and what could be improved?

Proximity to pool

Do you think ventilation and lighting could be improved in the change/community rooms at South Bronte?

It is dark - make lighter

Do you think the facilities should be modified to allow for the use of less able people?

Yes

Do you think the facilities should be modified to be more environmentally sustainable?

Yes

Have you used or seen the new facilities at North

Bondi, Tamarama, Marks Park and Coogee? What do you think about those facilities?

Look good

Do you think the existing building at South Bronte could be more sympathetically integrated into its landscape setting?

Yes

What do you think of the materials of the existing building? The concrete frame? The brickwork?

Dated and looks 80s

Are their any particular materials, plants or colours that you think are intrinsic to Bronte?

Green, bare sandstone

Markus

Do you use the facilities at South Bronte?

Yes, the seat, change room, shower

If you could make some part of your experience of South Bronte facilities better, what would it be?

Hot shower, not warm, temporary awning for shading swim pool very important

Which of the facilities do you think works well and what could be improved?

Toilet open all the time - water more pressure for showers

Do you think ventilation and lighting could be improved in the change/community rooms at South Bronte?

Lighting and ventilation could be better, remove humidity

Do you think the facilities should be modified to allow for the use of less able people?

Yes, old people - facility for pool

Do you think the facilities should be modified to be more environmentally sustainable?

No

Have you used or seen the new facilities at North Bondi, Tamarama, Marks Park and Coogee? What do you think about those facilities?

North Bondi is beautiful

Do you think the existing building at South Bronte could be more sympathetically integrated into its landscape setting?

Yes

What do you think of the materials of the existing building? The concrete frame? The brickwork?

Concrete doesn't need much repair, brick is a last century material, something contemporary

Do you think the roof terrace should be accessible space? If so, what uses should it accommodate?

Absolutely

If not, should it contain a garden or some other type of non-trafficable roof finish?

Removable shade

Are their any particular materials, plants or colours that you think are intrinsic to Bronte?

Bright colour for roof, roof just grey concrete

Stephen & Alyssa

What do you like about Bronte, the place and the

facilities?

Enjoys sitting close to the surf breaks along the walkway, likes the cafes, the enclosed and private atmosphere, bus makes it easy to get to and from, less people than Bondi and other beaches.

Do you use the facilities at South Bronte?

Yes, the showers every now and then following a swim
If you could make some part of your experience of South Bronte facilities better, what would it be?

Toilets could be freshened up, showers could be brought outside so that you don't have to go inside, change rooms and toilets stay inside. Man and daughter would not have to split when either one needs to use facilities.

Were interested in the idea of way finding devices - thought they could replace the existing blue signs - to make the pathway up and around the block more obvious.

Which of the facilities do you think works well and what could be improved?

Drinking water facilities would be a nice addition to facilities to provide amenity to beach goers and walkers.

Have you used or seen the new facilities at North Bondi, Tamarama, Marks Park and Coogee? What do you think about those facilities?

Likes Tamarama but thinks Bronte facilities don't need all the additional program as it has cafes, etc. close by. Adding cafes worked there because it didn't already have these things.

What do you think of the materials of the existing building? The concrete frame? The brickwork?

Concrete is not pleasing, nor is the coloured concrete around roof. Stephen didn't mind the clock but Alyssa thinks it's ugly in its current state - "the clock could be brought into the 21st Century"

Thought the materiality could reflect the cliff landscape.

Rosalie

Do you use the facilities at South Bronte?

Not yet, I just arrived from Germany two weeks ago
Do you think the facilities should be modified to allow for the use of less able people?

Yes

Do you think the facilities should be modified to be more environmentally sustainable?

Yes

Have you used or seen the new facilities at North Bondi, Tamarama, Marks Park and Coogee?

I like roof and how it feels closer to nature

Do you think the existing building at South Bronte could be more sympathetically integrated into its landscape setting?

Yes

What do you think of the materials of the existing building? The concrete frame? The brickwork?

Don't like concrete

Do you think the roof terrace should be accessible space? If so, what uses should it accommodate?

Yes

If not, should it contain a garden or some other type of non-trafficable roof finish?

Like plants so yes

Are there any particular materials, plants or colours that you think are intrinsic to Bronte?

Green from bay - colours

Orla & Aine

What do you like about Bronte, the place and the facilities?

The beach, the scenery, not too touristy, green area, come once a week

Do you use the facilities at South Bronte?

Never

If you could make some part of your experience of South Bronte facilities better, what would it be?

It looks dirty.

Do you think the facilities should be modified to allow for the use of less able people?

Yes

Do you think the facilities should be modified to be more environmentally sustainable?

Yes

Have you used or seen the new facilities at North Bondi, Tamarama, Marks Park and Coogee? What do you think about those facilities?

Like all of them. They look more modern and cleaner.

Do you think the existing building at South Bronte could be more sympathetically integrated into its landscape setting?

Tamarama sits nicely into its landscape. It could do a similar thing.

What do you think of the materials of the existing building? The concrete frame? The brickwork?

It's fine. It blends in.

Do you think the roof terrace should be accessible space? If so, what uses should it accommodate?

Benches, keep its current use.

If not, should it contain a garden or some other type of non-trafficable roof finish?

Make it a better, more usable space.

Are there any particular materials, plants or colours that you think are intrinsic to Bronte?

Blue/green, cliff colours.

Steven

What do you like about Bronte, the place and the facilities?

Situated along walk, direct bus line from Redfern, pavilions are nice, new grass, likes pool upgrade.

Do you use the facilities at South Bronte?

Yes, the toilets, showers, change rooms. They like to walk through and use the facilities after a quick swim but don't linger too long.

If you could make some part of your experience of South Bronte facilities better, what would it be?

Bins overflowing inside.

Which of the facilities do you think works well and what could be improved?

More space, separation of change rooms and toilets.

Have you used or seen the new facilities at North Bondi, Tamarama, Marks Park and Coogee? What do you think about those facilities?

The white colour of Bondi makes it stand out too much, prefers the heritage look - drew parallel with appearance of amenities and the family atmosphere of Bronte.

Do you think the existing building at South Bronte could be more sympathetically integrated into its landscape setting?

Likes that it sits back into the landscape

What do you think of the materials of the existing building? The concrete frame? The brickwork?

Likes the brick and stone, that it sits back, thinks materials should reflect cliff / look natural. Steven is a painter and referred to painting and rendering techniques that can be applied to the materials in order to update the appearance of the building.

Jan

What do you like about Bronte, the place and the facilities?

Currently living with Daughter in Bronte

Do you use the facilities at South Bronte?

Yes, the pool, beach, change rooms sometimes, showers
Which of the facilities do you think works well and what could be improved?

Include cafe, keep traditional toilets, layer, trees/greenery, keep promenade

Do you think ventilation and lighting could be improved in the change/community rooms at South Bronte?

More light

Do you think the facilities should be modified to allow for the use of less able people?

YesJan (continued)

Do you think the facilities should be modified to be more environmentally sustainable?

Yes

Have you used or seen the new facilities at North Bondi, Tamarama, Marks Park and Coogee? What do you think about those facilities?

Tamarama is beautifully understated and works well with surroundings

Do you think the roof terrace should be accessible space? If so, what uses should it accommodate?

Yes, accessible (cafe), shading could be improved, move seating

Are there any particular materials, plants or colours that you think are intrinsic to Bronte?

Sandstone, timber, natural

Greg

What do you like about Bronte, the place and the facilities?

The park has always been friendly, particularly families.

Do you use the facilities at South Bronte?

Yep, is a member. Built sandstone bridge in gully.

Uses outdoor showers, community rooms, seating out the front, the clock, the bins, kids climb on the rock sculpture which has weathered, kids also use lawn.

If you could make some part of your experience of South Bronte facilities better, what would it be?

A barbecue

Which of the facilities do you think works well and what could be improved?

Spent a lot of money on lawn which has not worked out, could be improved by adding ramp for disabled and maintenance

Do you think ventilation and lighting could be improved in the change/community rooms at South Bronte?

The ventilation needs an overhaul, glass bricks could be used to improve lighting

Do you think the facilities should be modified to allow for the use of less able people?

Yes and also into Bogey Hole

Have you used or seen the new facilities at North Bondi, Tamarama, Marks Park and Coogee? What do you think about those facilities?

Yes, the timber needs maintenance to prevent grey off
Do you think the existing building at South Bronte could be more sympathetically integrated into its landscape setting?

Not really, it's okay for what it is used for

What do you think of the materials of the existing building? The concrete frame? The brickwork?

It's stood the test of time. Timber only lasts two years.
Do you think the roof terrace should be accessible space? If so, what uses should it accommodate?

Kiosk, latte machine.

If not, should it contain a garden or some other type of non-trafficable roof finish?

No, there is enough gardens.

Are there any particular materials, plants or colours that you think are intrinsic to Bronte?

Get rid of pine trees. Use salt bush fence as a wind break.

Ahlen & Jeung

Do you use the facilities at South Bronte?

Yes, the toilets

If you could make some part of your experience of South Bronte facilities better, what would it be?

More, new and clean toilets, plus soap

Do you think ventilation and lighting could be improved in the change/community rooms at South Bronte?

Dark - ventilation alright

Do you think the facilities should be modified to allow for the use of less able people?

Yes

Do you think the facilities should be modified to be more environmentally sustainable?

Yes

Have you used or seen the new facilities at North Bondi, Tamarama, Marks Park and Coogee? What do you think about those facilities?

Looks good

Do you think the existing building at South Bronte could be more sympathetically integrated into its landscape setting?

Yes

What do you think of the materials of the existing building? The concrete frame? The brickwork?

Ugly brickwork, handrail, green and clock

If not, should it contain a garden or some other type of non-trafficable roof finish?

Roof terrace

Are there any particular materials, plants or colours that you think are intrinsic to Bronte?

White and green

Steve

What do you like about Bronte, the place and the facilities?

Been coming here for 50 years

Do you use the facilities at South Bronte?

Yes, the showers inside and out, seating, exercise on roof

If you could make some part of your experience of South Bronte facilities better, what would it be?

Temperature up all the time

Which of the facilities do you think works well and what could be improved?

More seating - out of the wind and out of the hot in summer

Do you think the facilities should be modified to be more environmentally sustainable?

Don't know, maybe solar for the hot showers

Do you think the existing building at South Bronte could be more sympathetically integrated into its landscape setting?

Tamarama is good

What do you think of the materials of the existing building? The concrete frame? The brickwork?

Ugly - concrete and brick

Do you think the roof terrace should be accessible space? If so, what uses should it accommodate?

Yes, chairs are good

If not, should it contain a garden or some other type of non-trafficable roof finish?

Keep the space - yoga

