

REPORT
OC/5.2/19.12

Subject: Marlborough Reserve - Consultation and Design

TRIM No: A19/0186

Author: Brigid Phelps, Landscape Architect

Director: Emily Scott, Director, Community, Assets and Operations

RECOMMENDATION:

That Council:

1. Notes that the community consultation outcomes indicate a majority support for the proposed park and play space upgrade in Marlborough Reserve, as consulted in September and October 2019.
2. Endorses the proposed design concept for the Marlborough Reserve Playground upgrade attached to this report and proceeds to detailed design.
3. Authorises the Director, Community, Assets and Operations, to sign off on further minor changes that may result during the detailed design and recommendations by technical consultants, including, accredited play safety auditor, registered engineers and accredited arborist, noting that any major changes will require a further report to Council.

1. Executive Summary

This report has been prepared to document findings of the Marlborough Reserve Playground upgrade community consultation, the first round occurred from 1 May–31 May 2019 and the second round from 26 September–25 October 2019.

The report details the activities undertaken with the community during this period; provides a summary of outcomes of the consultation activities; recommends endorsement of the final design concept; and sets out the next actions for the project.

2. Introduction/Background

Marlborough Reserve is a small reserve in Bronte, characterised by its sloped topography, mature trees, open lawn and popular children's playground. Marlborough Playground Upgrade project has been developed to improve the play experience within the park as identified in *Waverley Council's Play Space Strategy* (PSS), and to bring all play equipment and surfaces up to date with the latest Australian Standards for safety.

The PSS identifies Marlborough Reserve as a 'short term' priority, to be upgraded within 0–5 years after the adoption of the PSS in 2014. Furthermore, a recent play safety audit provides a condition assessment of the playground, the audit scored Marlborough Reserve Playground a low rating requiring major repairs or improvement. In taking the existing condition into consideration and ensuring Councils meets community expectation of quality play experience and good service standards it is recommended to replace the existing playground. In addition, Council has an ongoing commitment to universal access in all our parks and playgrounds, this upgrade will improve access into the play space to meet these requirements.

The PSS proposes the playground to remain as a neighbourhood play space for use by the within an 8–15-minute walk. The objectives and actions outlined in the PSS for Marlborough Reserve include:

- Provide a play experience to suit a range of ages, in particular the playground will fill a gap in play provision for older children between the ages of 5 to 14 in the neighbourhood.
- Provide a range of play experiences and cater for a range of age groups through active, imaginative, creative, social, quiet and free play.
- Create play spaces that encourage play in natural environments to promote an understanding of environmental processes.

The concept design for the play space meets these objectives by providing:

- A range of play experiences such as swinging, bouncing, climbing, sliding and balancing appealing to a range of ages from babies to tweens.
- A range of equipment facilitating the following play types such as imaginative, active, quiet, social, and free and nature play.
- Support facilities such as seating, bubblers, bins and barrier to the road from the playground.
- Improved access and wayfinding by provision of signs and continuous path too and through the play space with levels and surfaces to achieve universal access.
- Improved amenity to the reserve by increasing planting and using high quality materials and products with natural materials

Consultation methodology

Council officers conducted two rounds of community consultation for this project, the first round was held from 1 – 31 May 2019 and the second from 26 September – 25 October 2019. This process allowed officers to gather feedback on a preliminary concept design, make design adjustment reflecting feedback and seek further feedback to ensure the design meets the community's expectations.

Council officers pursued different avenues to inform and gain feedback on the proposed design, including a letterbox drop of flyers, direct emails to interested community members, online via social media platforms, and physical signage at Marlborough Reserve, and an announcement at the Bronte Precinct meeting.

In facilitating feedback Council Officers held 2 in-person *Have Your Say Days* at the Park. During these times Council Officers provided assistance and direction on accessing the online Have Your Say webpage during the Have Your Say Days hosted at the park. Officers also had open discussions with community members, explained concept rationale, and took notes for consideration. In addition, Council received submissions by emails to the Open Space Planning Team, and online survey through the Council *Have Your Say* webpage.

The information provided to the community for comment included analysis diagrams of the existing conditions, illustrative plans for the proposed upgrade works, supporting imagery of precedent projects and designs from other built works in Sydney and abroad, graphic sections and sketch views. This information could have been viewed at the Have Your Say Days, online at the Have our Say webpage, on site on physical signage, and was emailed directly to interested community members. This information is appended to this report for reference, refer appendix 1 for round one consultation material and appendix 2 for round two material.

Consultation feedback summary

Round one

The first round of community consultation was held from 1 May to 31 May 2019. The first *Have Your Say Day* at the park was held on Saturday 11 May, between the hours of 9 am and 12 pm. Council officers talked to seven people on the day.

The Waverley Have Your Say website received 41 visits, with 54 downloads of the draft plan during this time. A total of 31 responses were received from the community; 24 online survey response and 7 written responses via email. Round one consultation responses are attached to this report at Attachment 3.

The survey aimed to gather information on how people used the reserve and what they would like to see improved or addressed. The survey also asked what aspects of the draft design were supported or opposed.

Key findings from the first survey include:

- Most respondents visit the reserve daily (66.7%).
- Most respondents visit for a short period, 30 minutes (50%) to 1 hour (33.3%).
- Most respondents access the reserve by walking (95.8%).
- Respondents were generally satisfied with the existing reserve and playground (47.8%) or felt neutral (30.4%).
- The most common activity undertaken in the reserve includes playing, relaxing and walking.
- Majority of respondents visited the park with children under the age of 7.

Round two

The second round of community consultation was held from 26 September to 25 October 2019. The *Have Your Say Day* at the park was held on Tuesday 8 October, from 4 to 5pm. Council Officers talked to 20 people on the day.

The Waverley Have Your Say webpage received 114 visits, with 70 downloads of the updated documents during this time. A total of 27 responses were received from the community; 24 online survey responses and 3 written responses via email. Round two consultation responses are attached to this report, see Attachment 4.

The consultation for round 2 was designed to ascertain if participants were satisfied or unsatisfied with the updated concept design and what aspects of the design were liked or disliked. The survey also allowed participants to provide additional comments.

Key findings from the second survey indicated that most respondents were satisfied with the updated concept plan 60.9%, 47.4% were neutral and 21.7% were dissatisfied.

3. Relevant Council Resolutions

Nil.

4. Discussion

In this section, both written and verbal feedback is summarised into common themes. Each theme is accompanied by recommendations on how to incorporate the feedback into the upgrade works.

Theme – Expanding the playground footprint*Round One result*

There was a strong view in round one that expanding the playgrounds footprint would have a negative impact on the reserves quiet ambience that is treasured by local residents. The draft design proposed to use the current footprint of the playground for new upgraded play equipment, and introduce additional play elements in new locations including an in-ground slide, quiet play tee-pee/ cubby area and nature play elements such as stepping stones and balancing beams. Although 23% people responding were supportive of the additional play interest and 19% were neutral, 58% were opposed to expanding the playground footprint.

Design outcomes

As a result of feedback received in round one, the design was modified and the proposed playground footprint was reduced. The majority of new equipment was also moved closer to the footprint of the existing playground.

Round Two result

Of the engaged participants in round two, 25% people expressed that they were happy the playground footprint had been reduced in the updated design. 19% of people specifically said they preferred the original design with a larger playground footprint offering more equipment. 11% were of the opinion that the playground footprint was still too large and 41% were neutral in this discussion.

Recommendations

Maintain the size of the playground footprint shown in the updated playground design.

Theme – Fig tree*Round One result*

In the first round of consultation, 26% people expressed concern that the location of certain elements of play equipment and paths and increased use of the reserve as a result of the upgrades would have negative impacts on the health of the fig tree.

Design outcomes

As a result of this feedback, Council commissioned an arborist report and tree root mapping of the fig tree was undertaken by a Level 5 qualified arborist. The design was modified incorporating the arborist's recommendations to ensure the health of existing trees in particular the fig tree is maintained. The arborist then reviewed the amended design to ensure there were no significant impacts to the tree.

Council recognises the significant value the existing fig tree has to residents and the design intends to protect and retain the tree by strategically locating equipment and footings in places that are not harmful to the tree or its root system.

Round Two result

The community was satisfied that the new design and additional Arborist involvement in the design process would ensure existing trees were protected. In the second round of consultation, one person expressed concern for the health of existing trees and one person specifically mentioned they were happy Council was taking measures to protect the health of existing trees.

Recommendations

- Continue to work with a level 5 qualified arborist in the design documentation and construction stages of the project.
- Use construction methods to avoid damage to the existing trees.

Theme – Play equipment*Round One result*

In the first round of consultation 74% respondents were in support of upgrading the existing play equipment, 23% were opposed and 3% were neutral. There was a strong view that the upgrades should cater to a range of ages and include more equipment suitable for an older age group. The community also recognised the need to retain open space for free play.

There was some concern from the community that improvements to the playground and additional equipment would attract more people to the reserve; increasing noise, putting further stress on street parking and increase rubbish generation.

The in-ground slide was a particular point of interest in the community. A number of responses 36% were opposed to the in-ground slide and expressed concern that it would be visually unappealing, while 23% were in support of the slide and 42% were neutral.

There were also requests from the community to have a traditional swing set instead of the proposed basket swing and suggestions for climbing nets for older children.

Design outcomes

As a result of this feedback the design was modified, and the in-ground slide was removed from the design (a traditional slide was included as part of the multi-play unit). A traditional swing set was also included instead of the proposed basket swing. And a larger multi-play unit that caters to a wide range of ages in particular older children was also included in the design.

Round Two results

Respondents were generally satisfied 52% with the proposed play equipment in the updated design. 33% requested more variety of equipment with a focus on 'nature play' and climbing. 15% people were pleased the in-ground slide was removed from the design however, 15% people were also disappointed it had been removed from the design.

Recommendations

- Ensure the multi-play unit installed has a good variety of play interest catering to a range of ages and abilities especially older children.
- Explore additional nature play elements to be located within the proposed playground footprint.
- Ensure play equipment is in neutral colours and natural materials are used where possible to blend into the natural setting.

Theme – Footpaths*Round One result*

Walking is the preferred mode of transport to Marlborough Reserve (95.8%). This suggests the engaged users are local residents. The PSS identified the importance of the walking catchment area, with an ideal

catchment of 8–15 minutes' walk or an estimate 400 m distance. The upgrade of the reserve aims to provide better walking connectivity in the form of footpaths and pram ramps along Blandford Avenue and Brown Street as well as an access path to the playground.

Although 13% respondents in round one were in support of the proposed footpaths and 45% were neutral, 42% were opposed to the new paths, expressing a view that the paths would diminish valued green space. Some respondents did however, recognise the benefit of providing access to the playground.

Design outcomes

The design was modified in-light of this feedback and the extent of the proposed footpaths were reduced. To ensure equitable access to the playground a perimeter footpath, kerb ramps and access paths were provided only to the playground. The access path to the playground was also modified to be a neutral coloured material to reduce the visual impact.

Round Two results

In the second round of consultation people generally seemed satisfied that council had reduced the extent of the proposed footpaths. Only 15% listed the proposed footpaths and access paths as an element they disliked about the updated plans. 7% people especially identified the inclusion of access to the playground as something they liked about the plans. One person requested a path at the bottom of the park and some people requested more frequent mowing of grass at the park to improve walking conditions.

Recommendations

Retain the extent of the current footpaths and access path to provide access to the playground.

Theme – Park furniture

Round One Result

In the first round of consultation there was some concern from the community about relocating the picnic table and park seats 16%. A number of respondents described the benefit of the current location of the picnic table; taking advantage of the sun and shade during the year. There was also some concern that moving the table to the proposed location towards Brown Street would increase noise to nearby residents.

Overall, the community supported replacing the existing run-down furniture including the picnic table, bin and water fountain. There were also requests for additional picnic tables and seats in the reserve to cater for parties and multiple groups using the reserve at the same time.

Design outcomes

As a result of this feedback, the design was modified to retain the location of the existing picnic table and seats.

Round Two results

Participants were generally pleased the existing location of furniture was retained. Some people requested additional furniture in the reserve; in particular, there were three requests for an additional bin with dog bag dispensers at the bottom Southern end of the reserve and two people requested an additional picnic table within the reserve.

Recommendations

Provide an additional bin with dog bag dispenser at the bottom southern end of the reserve.

Theme – Playground surface*Round One result*

The draft design proposed to use a combination of rubber soft-fall surface material and playground mulch to improve safety and bring the playground surface to meet Australian Standards for playground design. There was some concern from respondents that the use and extent of the rubber soft-fall surface material in the design would be detrimental to the natural aesthetic of the reserve. However, there was also support for rubber soft-fall from respondents who recognised that the new surface would improve safety and play quality of the playground.

Council also needs to balance the use of synthetic surfaces against the increased maintenance requirements of providing organic playground mulch, particularly high wear areas such as under swings and slides.

Design outcomes

The design was modified and the extent of the soft-fall was reduced. The colours selected was also specified to be neutral colours to ensure the surface would blend into the natural setting.

Round Two result

In the round two consultation, 7% specifically listed soft-fall as an element of the design they disliked, 4% person listed this was something they liked about the upgraded design and 89% people were neutral in this discussion. Some people did however request the soft-fall to be a neutral colour.

Recommendations

- Retain the proposed extent of the soft-fall.
- Ensure the soft-fall installed is a neutral colour.

Theme – Fencing*Round One result*

A low fence was proposed adjoining street frontages closest to the play space to protect children from running onto the road, the play space was left open towards the reserve to allow for free play between these two spaces. Some people expressed concern regarding the low hoop fence in the garden bed between the playground and Brown Street and Blandford Avenue. While some respondents 16% were supportive of the low garden fence and identified it as a good way of managing conflict between children and roadways, others were opposed to the fence 29% were concerned it would take away from the openness of the reserve, the remaining 55% were neutral towards the garden fence.

Design outcomes

The design was modified and the extent of the low garden hoop fence was reduced, limiting the fence to interfaces closest to the playground and roadways.

Round Two result

Participants were generally satisfied with the amended extent of fencing. 7% specifically said they supported the loop hoop fencing, only 4% was opposed to the inclusion of fencing, 4% requested higher fencing for better visibility and 4% requested a fence between the playground and open lawn area, the remaining respondents were neutral in this discussion.

Recommendations

Maintain the proposed barrier to the road, in the form of planting and garden hoop fence, particularly where play equipment is located less than 30 metres from the road frontage to ensure adequate safety.

5. Financial impact statement/Time frame/Consultation

Council currently has a capital works budget which includes \$400,000 of grant funding from the State Government through the Stronger Communities Funds. The concept design cost estimate prepared by Council officers demonstrates the design is within the existing budget.

With consideration of Council's procurement policy and workload, it is anticipated the implementation of works to Marlborough Reserve may take six to nine months to complete construction.

Council officers will report back to the community on consultation findings and notify of the proposed improvements and expected construction timeframe following the outcomes of the Council meeting. Council will notify the community of any updates at 3-6 monthly intervals to the construction program as works progress.

6. Conclusion

The design concept has been further developed in consideration of the above discussion (see Attachment 5); in particular:

- Officers will continue to work with a level 5 qualified arborist during the design documentation and construction stages of the project to ensure the health of existing trees within the reserve is maintained.
- Construction methods that are sensitive to existing trees will be used.
- Inclusion of additional nature play elements have been located within the proposed playground footprint.
- Inclusion of an additional bin with dog bag dispenser at the bottom Southern end of the reserve.

It is recommended that Council endorses the design concept attached to this report. Upon endorsement, Council officers will proceed to detailed design of the project, refining the design concept to the level required for procurement and construction.

Additional specialist consultants will inform the detailed design works. These may include:

- Accredited arborist.
- Registered engineers.
- Accredited play safety auditor.

7. Attachments

1. Round One consultation material [↓](#)
2. Round Two consultation material [↓](#)
3. Round One consultation responses [↓](#)

4. Round Two consultation responses [↓](#)
5. Concept design [↓](#)

WAVERLEY'S ECOLOGICAL CORRIDOR

Marlborough Reserve sits within Waverley's Ecological Habitat Corridor and is part of the Bronte Ecological Restoration Action Plan. The site was been flagged as a site for additional understorey planting. Increased native vegetation will potentially enhance important ecological habitat corridors.



LEGEND

- Informal Perimeter Path
- Informal Access points
- Goat Tracks
- Existing Playground Area (Playground mulch & timber edge)
- Existing Swing
- Existing Mult-Play Unit
- Existing Drinking Fountain/ Tap
- Existing Park Furniture (Seating & picnic setting)
- Existing Trees
- Tree Protection Zone
- Garden bed
- Hard to mow slope
- Boundary Wall
- Boundary Fence
- Underground Stormwater
- Underground Water Main
- Underground Electricity

DISCUSSION

- Large grove of trees** provide a buffer between the playground and reserve from Brown Street & Blandford
- Mature trees** provide shade & gives the park a distinct character.
- Playground** has a good selection of equipment but is run down.
- Steep Slope** dominates the topography of the reserve, restricting pedestrian access into the park. Playground activities and selection of new equipment should take advantage of the existing topography.
- Footpaths** - There are no footpaths into or through the reserve. Additional connections into the playground would improve access through the park, allowing pedestrians better access to facilities.



Waverley Council Play Strategy
 Marlborough Reserve has been classified in the playspace strategy as a **Neighbourhood Park**. Upgrades to the playspace should implement the following:

- Include 'Exploratory/ Nature' play spaces.
- Include interpretation and education of the natural environment .



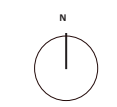
LEGEND

- ① Retain existing trees for shade amenity and to maintain the reserves existing shaded and calm ambience.
 - ② Provide a perimeter footpath around the reserve linking in with existing footpaths to improve pedestrian access.
 - ③ Provide access paths into and through the reserve to improve pedestrian movement and access to facilities.
 - ④ Provide areas of low buffer planting along the reserves boundary. Buffer zones improve safety between active areas and road traffic while low planting enables passive surveillance into the park from surrounding streets and neighbours and addresses hard to mow slopes.
 - ⑤ Retain existing footprint of playground and upgrade equipment and surface.
 - ⑥ Utilise the upper more level areas of the reserve to incorporate nature play elements and take advantage of the amenity of the existing mature fig tree.
 - ⑦ Provide native sensory gardens that support and attract native flora and fauna to strengthen Waverley's ecological corridor.
 - ⑧ Provide interpretive signage about Waverley's ecological corridor and educational facts about types of native flora and fauna the corridor supports.
 - ⑨ New embankment slides and climbing play elements down slope to take advantage of the reserves topography.
 - ⑩ Retain areas of open turf areas for free play and passive use. Retaining openness of the reserve will cater to a greater variety of park users.
 - ⑪ Provide screen planting along the Southern boundary between the reserve and neighbouring houses.
 - ⑫ New pram ramps to either side of Brown street to improve accessibility.
- Tree Protection Zone
 ○ Structural Root Zone

**MARLBOROUGH RESERVE
 AND PLAYGROUND UPGRADE**
 DRAFT CONCEPT DESIGN

FUNCTIONAL CONCEPT LAYOUT
 SK-03

Date: 30.04.2019
 Drawn by: BP
 Scale: 1:250 @ A3





LEGEND

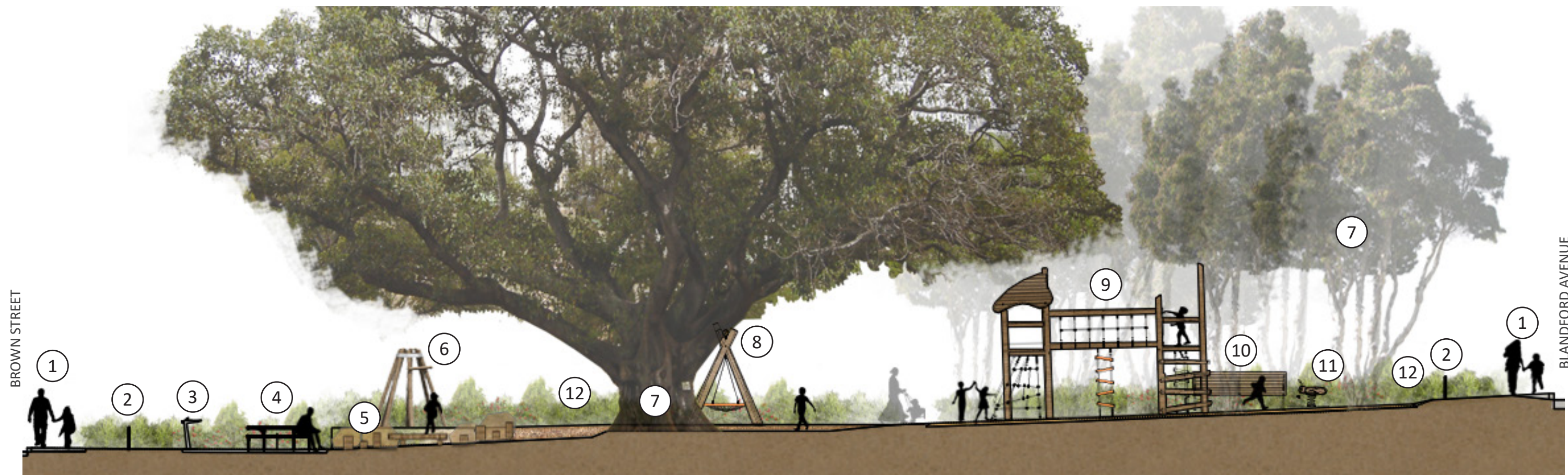
- 1 Retain existing trees for shade amenity and to maintain the reserves existing shaded and calm ambiance.
- 2 Perimeter footpath around the reserve linking in with existing footpaths.
- 3 Access paths into and through the reserve.
- 4 Sensory gardens with native plant species to support local native plants, encouraging children to interact with the natural elements of the playground.
- 5 Low garden fence around playground
- 6 New multi-play unit with numerous play elements of different difficulty levels catering to a variety of ages and abilities.
- 7 2x New springers with rubber softfall surface.
- 8 New basket swing set with rubber softfall surface
- 9 Nature play elements under fig tree such as timber platforms, stepping stones and balancing beams.
- 10 Quiet play zone to encourage imaginative play and provides a place for children to retreat and recharge.
- 11 Park signs with educational facts about Waverley's ecological corridor and native flora and fauna.
- 12 Embankment slide and climbing play elements down slope.
- 13 Retain existing Turf
- 14 Screen boundary planting
- 15 New pram ramps
- 16 Seat
- 17 Picnic table
- 18 Drinking fountain
- 19 Bin
- Tree Protection Zone
- Structural Root Zone

MARLBOROUGH RESERVE AND PLAYGROUND UPGRADE DRAFT CONCEPT DESIGN

PLAYGROUND CONCEPT PLAN SK-07

Date: 30.04.2019
Drawn by: BP
Scale: 1:250@A3





SECTION A



SECTION B

LEGEND

- ① Perimeter footpath around the reserve
- ② Low garden fence around playground
- ③ Drinking fountain
- ④ Picnic Table
- ⑤ Nature Play
- ⑥ Quiet play area
- ⑦ Existing trees
- ⑧ Basket swing
- ⑨ Multi-play unit
- ⑩ Seat
- ⑪ Springer/ rocker
- ⑫ Sensory garden
- ⑬ Embankment slide

MARLBOROUGH RESERVE AND PLAYGROUND UPGRADE

DRAFT CONCEPT DESIGN

PLAYGROUND SECTIONS

SK-08

Date: 30.04.2019

Drawn by: BP

Scale: 1:100@A3



WAVERLEY
COUNCIL



Platforms and balancing beams placed under the existing fig tree encourages exploratory play with the sites natural elements and takes advantage of natural shade.



Platforms at different heights can be positioned to take advantage of the sites natural topography and manage fall heights and level changes.



Multi-play units provide interest for multiple age groups



Bridges and nets between play elements are a fun challenge for kids and offer a safe method of transcending between levels and managing fall heights.



Embankment slide and nature play climbing elements take advantage of the reserves topography



Climbing elements down the slope manages the sites steep topography and provide a fun challenge



Basket swings are fun for kids of all ages and physical abilities



Separate areas for quite play gives children a place to retreat and recharge



Areas for free play provide opportunities for imaginative play



Sensory gardens stimulate the senses, encouraging children to interact with the natural elements of the playground.



Native gardens improve ecological habitat corridor and provide an opportunity for children to interactive with natural environments.



Interpretive singage provides an opportunity to educated park uses about the areas history and native flora and fauna

MARLBOROUGH RESERVE AND PLAYGROUND UPGRADE

DRAFT CONCEPT DESIGN

Playground Concept - Precedent images

SK-09

Date:	30.04.2019
Drawn by:	BP
Scale:	NTS





LEGEND

- ① Existing *Ficus elastica* (Rubber Fig) Tree
 - ② Existing swing set
 - ③ Existing bin
 - ④ Existing picnic table
 - ⑤ Existing playground
 - ⑥ Existing seat
 - ⑦ Existing drinking fountain
 - ⑧ Existing seat
 - ⑨ Existing garden
 - ⑩ Existing turf
 - ⑪ Grove of existing *Melaleuca* (Paperbark trees)
- ⬭ Structural Root Zone ⬭ Tree Protection Zone

MARLBOROUGH RESERVE AND PLAYGROUND UPGRADE

UPDATED DRAFT CONCEPT DESIGN

EXISTING RESERVE CONDITION

SK-01

Date: 20.09.2019

Drawn by: BP

Scale: 1:400@A3
1:200@A1





① Existing *Ficus elastica* (Rubber Fig) Tree



② Existing double seat swing set



③ Existing bin



④ Existing picnic table



⑨ Grove of existing *Melaleuca* (Paperbark) trees



⑩ Existing spring



⑤ Existing play equipment



⑥ Existing seat



⑦ Existing drinking fountain



⑧ Existing seat

MARLBOROUGH RESERVE AND PLAYGROUND UPGRADE

UPDATED DRAFT CONCEPT DESIGN

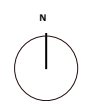
EXISTING PLAYGROUND CONDITION

SK-02

Date: 20.09.2019

Drawn by: BP

Scale: 1:200@A3
1:100@A1



WAVERLEY
COUNCIL



LEGEND

- 1 Retain existing trees for shade amenity and to maintain the reserves existing shaded and calm ambiance.
 - 2 Mulch under Fig tree
 - 3 Footpath
 - 4 Access path to playground
 - 5 Sensory gardens with native plant species to support local native plants, encouraging children to interact with the natural elements of the playground.
 - 6 Low garden hoop fence
 - 7 New timber multi-play unit with numerous play elements of different difficulty levels catering to a variety of ages and abilities.
 - 8 New springer play element
 - 9 New double seat swing set
 - 10 New rubber softfall surface under equipment. Colours to be neutral.
 - 11 Nature play elements such as timber stepping stones and balancing beams.
 - 12 Cubby house
 - 13 Park signs with educational facts about Waverley's ecological corridor and native flora and fauna.
 - 14 Retain existing Turf
 - 15 Screen boundary planting
 - 16 New pram ramps
 - 17 Existing seat to be retained
 - 18 New seat
 - 19 New picnic table to replace old table in current location.
 - 20 New drinking fountain
 - 21 New bin
- Structural Root Zone ○ Tree Protection Zone

MARLBOROUGH RESERVE AND PLAYGROUND UPGRADE

UPDATED DRAFT CONCEPT DESIGN

PROPOSED PLAYGROUND CONCEPT PLAN

SK-03

Date: 20.09.2019

Drawn by: BP

Scale: 1:400@A3
1:200@A1





① Nature play elements



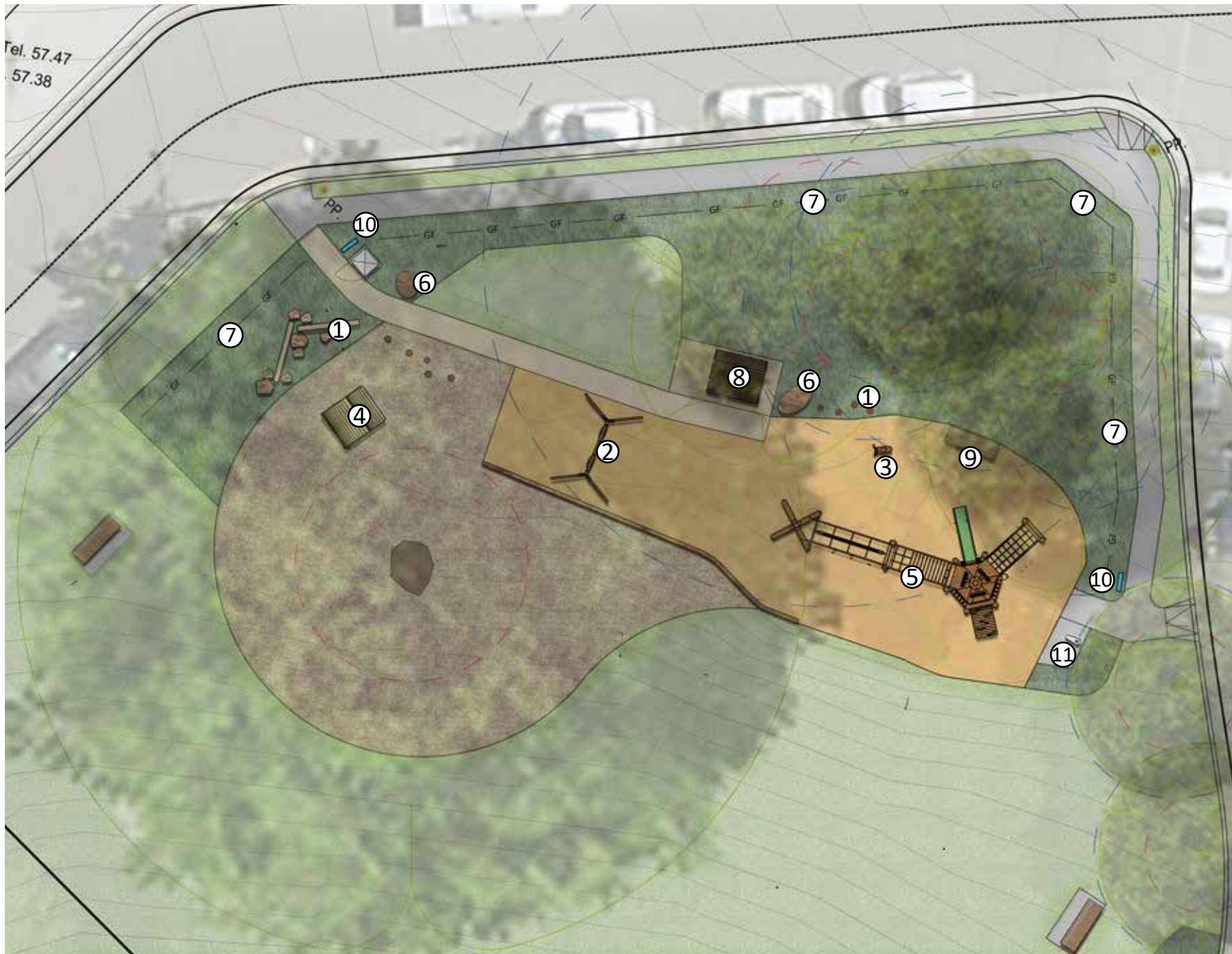
② New double seat swing set



③ New springer play element



④ Cubby house



⑤ New timber multi-play unit



⑥ Sculptural play elements



⑦ Low garden hoop fence



⑪ New drinking fountain



⑧ New picnic table



⑨ New seat



⑩ Park signs

MARLBOROUGH RESERVE AND PLAYGROUND UPGRADE

UPDATED DRAFT CONCEPT DESIGN

PROPOSED PLAYGROUND CONCEPT PLAN AND CHARACTER IMAGES SK-04

Date: 20.09.2019
Drawn by: BP
Scale: 1:200@A3
1:100@A1





Current playground



Upgraded playground





Current playground



Upgraded playground



Survey Report

06 July 2010 - 01 July 2019

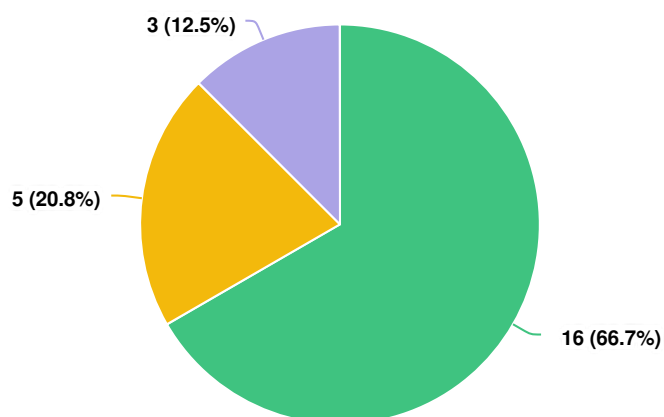
Marlborough Reserve - Have Your Say

PROJECT: Marlborough Reserve Playground Upgrade

Have Your Say Waverley



Q1 How often do you visit Marlborough Reserve?

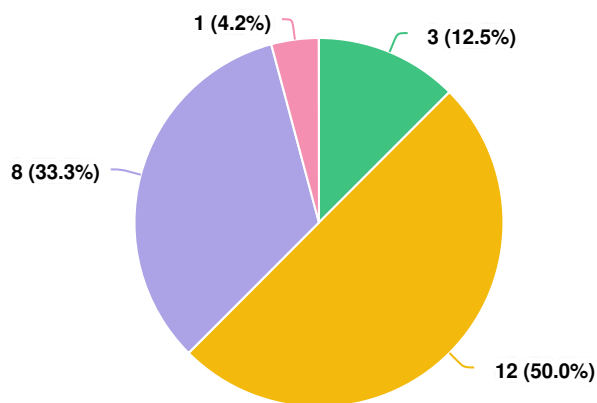


Question options

● Daily ● Weekly ● Monthly

Optional question (24 responses, 0 skipped)

Q2 How long do you spend in Marlborough Reserve?

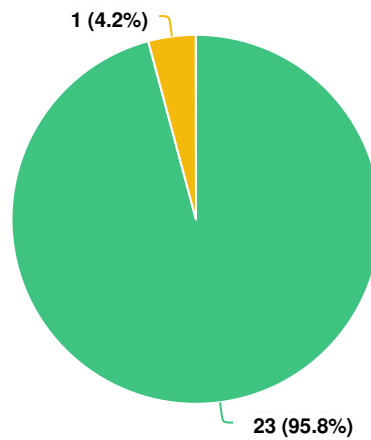


Question options

● 10 mins ● 30 mins ● 1 hour ● 2 or more hours

Optional question (24 responses, 0 skipped)

Q3 How do you access Marlborough Reserve?

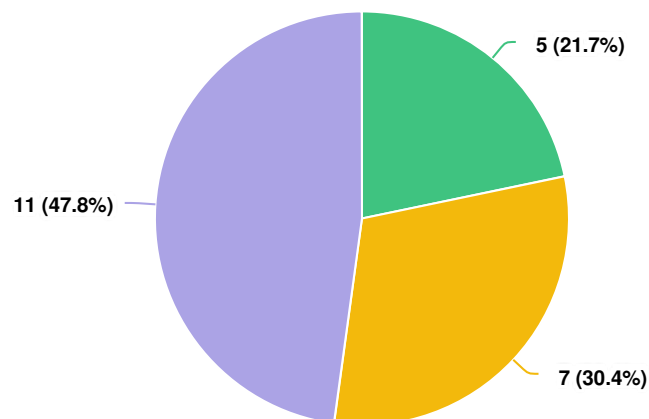


Question options

Walk Car

Optional question (24 responses, 0 skipped)

Q4 How satisfied are you with the existing Marlborough Reserve and Playground?

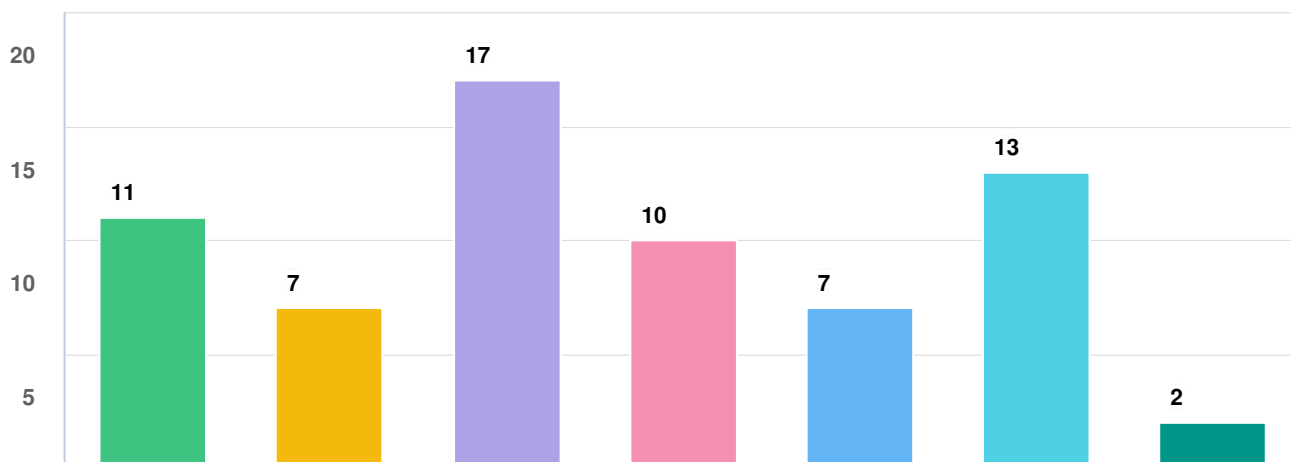


Question options

Very Dissatisfied Neutral Very satisfied

Optional question (23 responses, 1 skipped)

Q5 What do you do in Marlborough Reserve?



Question options

Walk Ball games Play Walk Dog Exercise Relax Other

Optional question (24 responses, 0 skipped)

Q6 Please specify.

Anonymous

5/20/2019 12:55 PM

My 4 year old boy plays and explores.

Anonymous

5/20/2019 01:57 PM

use the park with family daycare group - mostly on play equipment and swings, picnic at table, run up and down hill through trees, count and identify birds

Optional question (2 responses, 22 skipped)

Q7 In the future, what would you like to see in Marlborough Reserve or in the play space?

Anonymous

5/09/2019 03:25 PM

I would love a great play area for kids, with upgraded equipment. If there is any scope for rubber flooring in the playground area that would be wonderful. Woodchips etc are dreaded by all parents - they make children so dirty and children eat them,

Anonymous

5/11/2019 09:14 AM

Climbing equipment

Anonymous

5/11/2019 09:25 AM

A climbing area that caters for children ages 5 and above. Climbing web. This park is used every day after school & on weekends by numerous school children in the local area. It is a big heart and hub for the community.

Anonymous

5/13/2019 11:13 AM

Better playground facilities - they are currently in disrepair/rusty/unsafe; all weather playground surface (ie. not barkchip); a water fountain that kids can reach and drink from; additional park table/bench; larger flat area so kids can play with balls

Anonymous

5/13/2019 08:54 PM

Greater play experiences for children across different age brackets. The current equipment is aged and feels unsafe for my kids

Anonymous

5/16/2019 02:10 PM

Better lighting. More picnic areas. Exercise area. Terracing.

 name redacted

5/17/2019 07:26 AM

Upgrade to existing play equipment but remainder of reserve remain 'undeveloped' as this is it's charm. Maintain free / off lead dog play area in central and southern part.

Anonymous

5/19/2019 01:16 PM

rock climbing wall. lots of shade. toilets.

Anonymous

5/20/2019 12:55 PM

Updated equipment, more play equipment, a level grass area for playing. A community garden. Native bee hives, wild flowers, fencing.

Anonymous

5/20/2019 01:08 PM

Cleaner safer play area for children, more signage about dogs on leads near play area

Anonymous

5/20/2019 01:09 PM

Adult body weight exercise equipment, all weather basketball backboard / ring and half-court yo give pre-teen / teenagers things to do (not just little kids).

Anonymous

5/20/2019 01:57 PM

fencing around playspace esp north end closest to road. swings similar length and safe distance from other activities, role play window/humpy/den, safe roundabout or 4person see saw, alphabet or numbers somewhere, aboriginal themes/symbols in softfall

Anonymous

5/20/2019 05:02 PM

I would like the play space to continue to include suitable play equipment for school age children with slides monkey bars climbing frames and swings. Not toddler equipment like recent surrounding park upgrades. Minimal disturbance of natural environment.

Anonymous


5/23/2019 12:06 PM

It just needs a refurbishment nothing more, your proposal will destroy the peacefulness of the park, the whole point of being a reserve!

Anonymous 5/23/2019 01:13 PM	Natural play equipment using wood and stone. No bright colours to distract from beautiful natural elements.
Anonymous 5/23/2019 09:27 PM	I do not want to see any extensive changes. The park is a peaceful place and I am concerned that your proposal will gentrify the park too much.
Anonymous 5/27/2019 10:05 AM	more flat areas
Anonymous 5/27/2019 01:45 PM	More trees to attract more wildlife.
Anonymous 5/28/2019 10:18 AM	Upgrade of the playground within the existing footprint, preserving the character of the reserve as natural as possible.
Anonymous 5/28/2019 12:27 PM	Much more regular cutting of the grass.
Anonymous 5/28/2019 12:49 PM	Refurbish existing children's area and equipment only. Do not expand size. Do not install an absolutely unrequired fence.
Anonymous 5/28/2019 02:39 PM	An existing safety feature of the park is that it slopes away from the roads. While I am happy that council is required to update play equipment to new safety standards, I very strongly desire the natural space to remain substantially as it is.
Anonymous 5/28/2019 03:32 PM	Returfing of the grassy verge. 90° parking INTO the park on Blandford Avenue. This will RADICALLY IMPROVE the park utilisation while solving the growing parking and navigation problems on Blandford Avenue.
Anonymous 5/31/2019 11:17 AM	Upgraded of the play equipment and use of the topography of the hill into the play equipment. Also a better space utilising the sunny areas for picin or sitting space. Also, exercise equipment for adults to use.

Optional question (24 responses, 0 skipped)

Q8 What do you like about the draft Marlborough Reserve and Play Space upgrades?

Anonymous 5/09/2019 03:25 PM	great variety of playground and kids activities
Anonymous 5/11/2019 09:14 AM	Caters kids over 5
Anonymous 5/11/2019 09:25 AM	Climbing area, slide, swings 2 please, tee pee quiet area, larger picnic table and chairs, nature play
Anonymous 5/13/2019 11:13 AM	good shade cover and spacious.
Anonymous 5/13/2019 08:54 PM	Excellent upgrade design. Appeals to a wide range of children. Improved safety and utilisation of the space
Anonymous 5/16/2019 02:10 PM	Footpaths
 name redacted 5/17/2019 07:26 AM	Footpaths around outside. New equipment to replace old. Water fountain- please consider option to allow dogs to drink from water fountain equipment.
Anonymous 5/19/2019 01:16 PM	fence. new slide. nature play.
Anonymous 5/20/2019 12:55 PM	Updated playground equipment, fencing between playground and street
Anonymous 5/20/2019 01:08 PM	Any improvement is good! Barriers between play area and road are important
Anonymous 5/20/2019 01:09 PM	Plants, paths and slides
Anonymous 5/20/2019 01:57 PM	Maintaining trees and adding more native vegetation and natural play space. Keeping play equipment, love the idea of slide and climbing to use hill. love the idea of info on local wildlife.
Anonymous 5/20/2019 05:02 PM	Slide down slope assuming it is steep enough to be fun for older children
Anonymous 5/23/2019 12:06 PM	nothing, as above, it just needs a refurbishment! by you doing this upgrade you are destroying the tranquility and peacefulness the reserve brings!
Anonymous 5/23/2019 01:13 PM	New planting and natural elements. An upgrade to fun, safe play equipment catering to different ages will be well utilised. Working water station, Bin area that can't overflow after weekend parties which will increase. Keep lots of park as open space. Thx
Anonymous 5/23/2019 09:27 PM	Nothing.

Anonymous 5/27/2019 10:05 AM	nothing its over the top,it will destroy the ambiance of the park
Anonymous 5/27/2019 01:45 PM	The only thing we like are the “ minor “ landscaping upgrades which may help attract a bit more wildlife to the reserve. We would like to see more trees planted and the large existing trees to be properly arborescenced to reduce the chance of limb breakage.
Anonymous 5/28/2019 10:18 AM	Upgrade of the playground equipment
Anonymous 5/28/2019 12:27 PM	Nothing. It is way too big (simply use the existing footprint. Do not expand it). There should not be a fence. This will impede the dog owners and the children who, from my daily observation, especially on weekends, like to freely play all over the park.
Anonymous 5/28/2019 12:49 PM	Upgrade of existing equipment and amenity within the current footprint is definitely due.
Anonymous 5/28/2019 02:39 PM	Very little. It is an expensive exercise on council's initiative, will largely destroy the laid back nature existing currently.
Anonymous 5/28/2019 03:32 PM	Not a lot. The playground facilities need enhancement but it does NOT need expanding
Anonymous 5/31/2019 11:17 AM	The use of the hill with the slide and the paths through the park. I like the native plant space just not the location. I like the swing and soft fall and sidewalk around the playground.

Optional question (24 responses, 0 skipped)

Q9 What do you dislike about the draft Marlborough Reserve and Play Space upgrades?

Anonymous

5/11/2019 09:25 AM

At least 2 swings would be best

Anonymous

5/13/2019 11:13 AM

Aged play equipment, very sloped site that limits safe play.

Anonymous

5/13/2019 08:54 PM

Nothing

Anonymous

5/16/2019 02:10 PM

1. Too much play area. (it seems to have doubled) Not enough adult area. eg. picnic tables, exercise area, terracing. 2. prefer to have the pram ramps lower down Brown and Blandford. 3. Not enough new vegetation. 4. No plan for the lower slopes.

 name redacted

5/17/2019 07:26 AM

Feels overdeveloped. The metal slide.

Anonymous

5/19/2019 01:16 PM

playgrounds must have swings! and UPF 50+ sunshades covering play area

Anonymous

5/20/2019 12:55 PM

N/A. It would be great to see more garden options included.

Anonymous

5/20/2019 01:09 PM

Seems very much about young children (aged below 7) vs other children & residents. You get children eventually grow up and we should want to keep them in the local area vs having to head to Waverley Park

Anonymous

5/20/2019 01:57 PM

Doesnt mention intended colours in playground but would like more natural colours than in recent Brown St upgrade. Would like to keep the water fountain, table and rubbish bins (although bin could be further from play /eating area as sometimes it stinks!

Anonymous

5/20/2019 05:02 PM

Replacing swings with basket swings. Kids of all ages love normal swings. The basket swings are not the same and don't require them to use core strength to swing themselves. Actual play equipment looks limited. Monkey bars or similar would be nice

Anonymous

5/23/2019 12:06 PM

everything! have you considered the exponential increase of foot and car traffic! the increase in garbage, the decrease in bird wildlife and native animals.

Anonymous

5/23/2019 01:13 PM

Like to minimise softfall, natural colours/ materials only, fences not necessary if planting there, keep table in sunshine position, ensure bin can't overflow from parties, no concrete pathway in to park, protect tree roots, no sign on opposing street pls

Anonymous

5/23/2019 09:27 PM

I like the ruggedness of the reserve as it currently is, almost a little piece of bush in the middle of suburbia. The native animals and birds that we see there and the peace and quiet. I imagine the extra people would overflow the bins with rubbish.

Anonymous

You are turning our quiet nature reserve into a large noisy kids playground

5/27/2019 01:45 PM

far beyond the existing footprint. I don't want any new equipment south of the figtree (downslope slide). I don't want the picnic table moved, nor do I want a concrete footpath.

Anonymous

5/28/2019 10:18 AM

Extension of concrete footpath along the whole of the perimeter of the reserve is unnecessary and takes away from the green space, extension of the play area

Anonymous

5/28/2019 12:27 PM

It is way too big. It uses too much of the existing park. It will impede the people who exercise and/or play with their dogs. The fence will impede the free play of children who like to run all over the park.

Anonymous

5/28/2019 12:49 PM

Do not expand size. Do not install an unrequired fence. This will take away from the open nature of the park. Will also reduce the common area and from Dog play areas of which Waverley is sorely lacking.

Anonymous

5/28/2019 02:39 PM

Almost all. Where did the initiative to: A. Spend such funds as council complains about costs rising? B: create an artificially natural set of spaces? C: risk the death of the marvellous play - friendly tree by surrounding it with matting.

Anonymous

5/28/2019 03:32 PM

It's absolutely TERRIBLE! It is FUNDAMENTALLY misreading the park problems! It will make the park a FAR WORSE recreational facility.

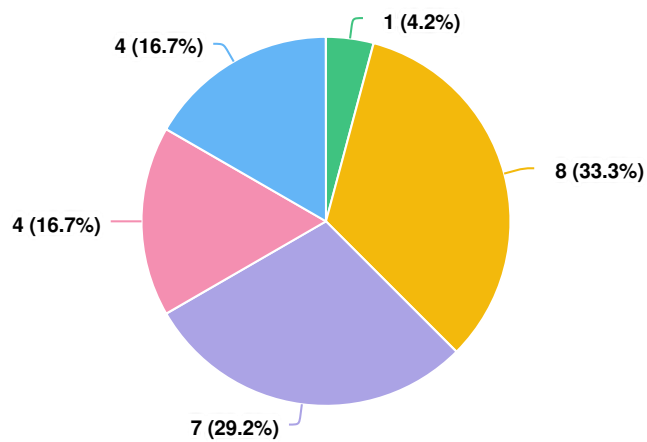
Anonymous

5/31/2019 11:17 AM

I'm worried about the effect on the fig tree with softfall underneath, I think the native space should be moved somewhere else and more done at the bottom of the park where the drain is. Exercise equipment would let the park be utilised more by adults.

Optional question (20 responses, 4 skipped)

Q10 What is your age range?



Question options

● <20 ● 31 - 40 ● 41 - 50 ● 51 - 60 ● 61 - 70

Optional question (24 responses, 0 skipped)

Marlborough Reserve Email Submissions. Consultation May 2019

25	<p>My wife and I own [REDACTED] Brown St, and have raised our daughter from birth in this house, immediately adjacent to the park. We have lived here for over thirty years.</p> <p>The fact that I could 'have my say' is appreciated, but the categories and restrictive size of the fields available did not give me adequate space to voice my objections.</p> <ol style="list-style-type: none"> 1. I wish to note that both my wife and I completely agree with the detailed submission provided by our immediate neighbour, Ms Karen Rosenfield. 2. I wish to add an emphasis to my truncated response noting the physical slope of the park. As you know, it slopes down from the two dangerous roads. Kids, balls and dogs cannot easily run uphill at speed and be at risk. In the thirty years I have lived there, used the park almost daily and seen children (including my own), babies, dogs and elderly residents enjoy it, this feature has contributed significantly to as far as I know, a perfect safety record. 3. None of our neighbours with whom I have spoken desire significant changes to the park. I would like to know from where this expensive proposal has originated. 4. Open space is at a premium. Please leave this small space alone, save money, save the efforts associated with ongoing maintenance, and respect the wishes of the local residents. <p>Thank you for your consideration.</p>
26	<p>Dear Council team,</p> <p>I live at [REDACTED] Blandford Ave, Bronte, directly to the eastern side of the reserve. I write to express my deep concern and objection at the proposed Playspace plans for Marlborough Reserve. There is no question that the existing equipment in the playground at the northern boundary requires upgrade as it's very old but that should be the extent of the work and it should be kept within the existing footprint of the play area. The proposal does not remotely meet local Resident need.</p> <p>Living directly across the road from the park, I am very much aware of how this Reserve is loved and used by the community. It is most frequently used for dog play and exercise, and in this respect it's a massively valuable resource as there are far too few of these facilities in Waverley.</p> <p>Expanding the footprint and installing an Embankment side (#12 on the concept plan) will dramatically reduce the total space available and the slide will be an eyesore.</p> <p>Secondly, the park is next most used by older children for their play (e.g. football and soccer games and parties that use the entire park). They need space to play these games and this plan does the opposite. The plans as they stand are more relevant for younger children not older ones. However, younger children's needs are already serviced by the play area only 100 hundred metres away on Brown St which has only just been upgraded. The proposal therefore contradicts how this park is used and takes space away from the residents' actual needs.</p> <p>https://haveyoursay.waverley.nsw.gov.au/marlborough-reserve-playground-upgrade?tool=survey_tool&tool_id=clarke-reserve-have-your-say1&ts=1559011771#tool_tab</p> <p>Concrete footpaths around and in the park are not necessary and a silly use of money. There are perfectly good paths on Brown and Blandford Sts already available and in use. They too will cut into the greenspace available.</p> <p>Finally, I take this opportunity to express that the neighbourhood consultation on this proposal has been very poor. I have received no letter drops, meetings with the Council are held during the day when working people cannot attend, and I do not think that 2 signs cable-tied to park benches are a remotely adequate way to explain to residents a proposal of this extensive nature.</p>
27	<p>I own, and reside at, [REDACTED] Brown St, Bronte with my wife and daughter. Our home is on the immediate southern boundary of the park. Whilst we recognise that the playground equipment is rundown and in need of an upgrade, we strongly disagree with some of the " Playground Concept Plan " proposals as detailed on diagram SK-07.</p> <p>Firstly, the footprint of the play areas is being substantially increased, and, to the south of those existing, by way of elements 9 and 12 on diagram SK-07. This will lead to much more noise from child activities, with that noise being louder, due to it being closer, in proximity, to our home. We are especially concerned about element 12 (embankment slide and climbing play elements downslope) as identified on SK-07. This apparatus will result in a massive increase in child noise closer to our home. We are also of the opinion that it will be a visual eyesore, and not complimentary, to an otherwise, peaceful and beautiful, relatively small, reserve area.</p>

house numbers redacted

	<p>Secondly, relocating the picnic table from its current location N/E of the fig tree, to position 17 on diagram SK-07, being substantially closer to my property, will result in a much greater noise impact on us due to park party gatherings always being centred around the picnic table location. In summary, we are not opposed to rejuvenation of the existing play areas to bring them up to standard, and also to the thoughtful landscaping elements included in the proposal. We are, however, vehemently opposed to new play elements being built to the south of the fig tree trunk, and to the relocation of the picnic table for the reasons given above.</p> <p>I was unavailable on the 11 th of May to meet with council representatives in the park to discuss our concerns and I note that, as an immediate neighbour of the park, we have received no notification of the proposal in the mail. I write to you now in the hope that I may be able to meet to discuss my concerns in further detail.</p> <p>Further to my original correspondence a week ago, I would like to add that we do not think that a concrete footpath around the entire park is necessary or complimentary to the natural park environment. I understand the requirement for pram access to the playground area at the top of the park but we do not want to see a path extend all the way down Brown Street next to our house at number [REDACTED]. Not only would the extra concrete detract from the natural beauty of the park but it would encourage youth to skateboard down the hill disturbing our peace.</p> <p>Secondly, the council have classified Marlborough Reserve as a “ neighbourhood “ sized open space and yet Varna Park (10 times as large) is also classified as a “ neighbourhood” park. I feel that the scope of the proposed equipment upgrade is far out of proportion to the size of this space and significantly detracts from the natural ambience and wildlife habitation of the park. Once again, please do not build any play equipment south of the figtree trunk and limit the playground upgrade to the existing footprint. Having said that, we are all for additional natural landscaping initiatives. Additionally, the scope of works proposed will bring extra traffic to our narrow and dangerous street with extremely limited parking as is.</p> <p>Finally, having met with other residents and Cr Tony McKay during the week, it became evident that no one received letterbox notification of the meeting held in the park on the 11th of May. I would therefore request that council extend the deadline for public comment and reconvene an additional meeting in the park for public feedback to council.</p>
28	<p>Hi</p> <p>We live in Bondi and enjoy many parks in the area.</p> <p>We like Marlborough Reserve for its space and wonderful trees. It’s a great place for our children to run around and play hide and seek.</p> <p>I agree that the playground should be upgraded but not expanded. In particular please protect the Morton Bay Fig tree and not put anything underneath it.</p> <p>Also, we have never felt the need for pathways in the park, we like it as it is. The path across the road is fine.</p>
29	<p>Summary</p> <p>Marlborough Reserve is for the enjoyment of all people, of all ages. It is a unique natural setting. The upgrade proposal changes children’s play equipment to the detriment of the unique and splendid natural setting. The original designers of the park got it right.</p> <p>Our recommendations:</p> <ol style="list-style-type: none"> 1. Retain the footprint of the playground to the existing areas only. 2. Maintain the current locations for picnic table and bench seats 3. Do not build a concrete path on the perimeter or through the park. 4. Eliminate the embankment slide and climbing zone 5. Do not use synthetic rubber Softfall surface. <p>Introduction</p> <p>Marlborough Reserve, in Bronte, is a beautiful park situated in a sloping pocket below the escarpment, on which Henrietta, Seaview, Langlee Streets sit. The park is special due the amazing trees and topography. This is a unique, large open and natural space. The playground is situated at the northern end of the park and integrates well in the natural landscape.</p>

house numbers redacted

	<p>This reserve is more than the playground. People of all ages use the park for the peacefulness, fresh air, the sun, the shade and the openness. People walk and run with their dogs in the park. Many gatherings are held in this park. People sit in the sun in autumn, winter and spring to catch the sun and breeze, and in summer the same amenities provide welcome shade.</p> <p>The existing park has a very impressive Morton Bay Fig as the feature. The root system extends to the circumference of the canopy and this can be seen at ground level. Children play in and around the hollows of the fig tree, the roots and branches, which all form natural part of their games.</p> <p>In the north east corner is a well-established grove of Melaleuca trees. In the winter, the Melaleuca trees are where people go to catch the afternoon sun. Below this and protected from the northern sun, is the climbing equipment. At the south end of the park, at a much lower level, is a grove of mature Eucalypts.</p> <p>Due to the combination of location and flora, the park is well shaded in the summer, however, the sun is very low in the sky in the autumn, winter and spring, and most of the park is in shade and is cold. Only pockets of the park are warmed by the winter sun.</p> <p>The climbing equipment and swings are well used as they are in shade.</p> <p>The existing picnic table is perfectly situated as it is shaded in the summer and is the only part that retains the much sought-after sunlight in the autumn, winter and spring. The picnic table is well used. It is centred on the high side of the park. Parents seated there can comfortably observe children on the swings and at the playground and across the whole park.</p> <p>We occupy that table all year round, particularly in the cooler months. We bring our family and friends to the park and we centre around this table as it is perfectly situated. It is high enough to catch the winter warmth.</p> <p>The two bench seats located on the east and west perimeters are perfectly placed for catching the sun. The easterly seat gets the morning sun, and the westerly seat gets the sun from midday for a few hours. The western seat is the only location that has sun from May through the September in the afternoon. The western seat is particularly well patronised, for example even the Postman in the last few weeks has been seated here at lunchtime.</p> <p><i>Figure 2 Sun and shade and the western bench seat</i></p> <p>The proposed upgrade to Marlborough Reserve and playground</p> <p>We do not know where the push for this development has come from. We understand that there are many other parks in much greater and immediate need of refurbishment than this park. Those other parks in need of upgrade should be prioritised.</p> <p>We do not support the proposed changes. Our main concerns are</p> <ol style="list-style-type: none"> 1. The proposal will change the nature of the park from a natural setting and free open breathing space to an urban concrete and synthetic playground. The use of materials and concrete as seen in the Gibson St playground and park would be an assault on, and destroy the beauty of Marlborough Reserve. See Appendix A 2. There is a possible misconception about childrens' needs and new style playground. In our experience of playing with and observing children throughout the seasons over the past years, the children enjoy and benefit from the open uncluttered space, the safe sloping topography, and accessible trees for playing. Whilst they may enjoy the 'natural looking' over engineered, purportedly safe new style playgrounds, this current proposal denies children the possibility of natural un-developed open environment. Sometimes less is more.
--	--

3. The proposed playground will consume more than twice the current area of the existing playground and significantly impact the whole reserve. The whole reserve is being impacted for the benefit of a small proportion of the population.

4. The introduction of concrete pathways around and into the park is of major concern. There are adequate footpaths on the street across the road. Access to the park is not difficult. Walking on grass is a real pleasure and a relief from the concrete that pervades our environment. People run and walk through the park in many directions. For the physically challenged, you can provide safe access points to the park without having to add more concrete to our already over sealed environment.

5. Whilst we love and value children’s use of the park, it is also extensively used by people of all ages and walks of life, for other recreational purposes apart from playground. Thus, extending the children’s ‘constructed play’ area prejudices and disadvantages all above the age of say, 9 years old.

6. The Moreton Bay Fig Tree is a high value tree. You have identified the Tree Protection Zone (TPZ) around the canopy and base. The proposal does not meet the Council’s standards within a TPZ. See Appendix A. The proposal for an elevated embankment slide and climbing elements under the canopy of the Moreton Bay Fig tree will destroy the visual peacefulness of the park and the beauty of the tree. Nothing will grow under the tree so it cannot be concealed by planting.

b. The extensive use of soft fall rubber over the tree roots will compromise the natural environment and compromise the tree.

7. The proposed placement of table will not provide the same visibility of the play areas as current.

8. The removal of the chair on the western side of the park would be a great loss to the other frequent users of the park, denying then the comfort of the warming sun in winter or simple a place to rest and watch the park and its occupants.

9. This “whole of reserve” approach misrepresents the “Marlborough Reserve Playground Upgrade”

Figure 3 The view of the Morton Bay Fig tree from Brown St and autumn/winter sun on the sea

We have reviewed the proposal and make the following comments: see over 6

Reference	Sheet	Description	Response
2	SK-07	Perimeter footpath around the reserve to link with existing footpaths.	<ul style="list-style-type: none"> Introducing a concrete pathway to the perimeter of park will destroy the natural beauty of the park. Walking and pushing prams on grass is part of the natural experience. I see people enter from and cross in many different directions. They rarely walk the boundary. Not all roads lead to the playground. There are no existing footpaths or goat tracks in the park.

				<ul style="list-style-type: none"> • The root system of the Moreton Bay Fig tree should not be interfered with. • The footpaths on the opposite side of the street are adequate.
	3	SK-07	Access path through the reserve	There is no need for a pathway running through the reserve. The use of concrete in this area will make an adverse impact and is unjustified. Short access points are sufficient.
	4	SK-07	Sensory garden	Unnecessary addition. This area is currently lovely free play today, and the proposal should not restrict movement around the trees.
	6 , 7 and 8	SK-07	Rubber soft fall surfaces	<ul style="list-style-type: none"> • The introduction of this does not protect the natural beauty of the park and the widespread use of this is deeply concerning. What is wrong with mulch? Do we need to cosset children which effectively denies their sense of adventure and discovery? • Rubber under the Morton Bay Fig tree will compromise the root system. We strenuously object to the use of rubber in this location
	9	SK-07	Play elements_embankment slide	<ul style="list-style-type: none"> • These elements will hinder the free flow around the tree and the park for those who come for the peacefulness, dog walking, running and other activities. It is presently a picnic spot for birthday parties, get togethers, and widely used • This is an extension to the current footprint.
30	I reside [REDACTED] Brown st. My husband [REDACTED] & I have lived here for almost 30 years. We have raised our son & daughter here & have spent lots of time in this wonderful park. Our neighbours children from number 40, 46 & 50 Brown st. all went to Bronte public school which means walking through the park every day for seven years. We have all had birthday parties in the park & have formed wonderful friendships. Christmas parties every year in the			

house numbers and names redacted

	<p>park that former neighbours still attend. We have all lived here for about the same amount of time.</p> <p>We agree with some of your proposal: upgrade of equipment, in keeping with wood chip not rubber, keeping in mind the two swings are for all ages, disposing of them for the one proposed would be a mistake. The wheelchair & pram access would be great around the swing area, but not needed throughout the park. We do not agree with: a fence around any perimeter or a path surrounding or walkways through the park. This would disturb the Eco friendly nature of this glorious park. The wildlife is amazing. Big owls, kookaburras ect, the least changes to their environment the better. The slide proposed seems to take up a lot of room but strongly disapprove of a cover which would be an eyesore. We must remember that the park is not just for children. Adults use the park for recreation, a lot of people from surrounding units enjoy the space & serenity. Please keep our sun drenched oasis the way it is as much as possible.</p>
31	<p>In reference to the proposed upgrade to Marlborough reserve playground.</p> <p>The equipment provided at this Reserve seems quite adequate for the area. I have used this recreational area for 58 years Children, Grandchildren and Great Grandchildren.</p> <p><u>This proposed upgrade will cost Four Hundred Thousand dollars</u></p> <p>My concerns are as follows</p> <ol style="list-style-type: none"> 1. The area for the playground is to be enlarged and introduces intensive play underneath the Moreton Bay tree Diagram SK-07/9. <ul style="list-style-type: none"> • More demanding use of this area will surely be detrimental to the Moreton Bay Fig tree?? 1. Footpaths - There are no footpaths into or through the reserve. Additional connections into the playground would improve access through the park, allowing pedestrians better access to facilities. SK07/3 • We do not need any concrete paths through the park, pedestrians are quite capable of negotiating this area, and have been doing so for many years. 2. Play elements down slope to take advantage of the reserves topography Diagram SK-03/9 <ul style="list-style-type: none"> • Use of the topography can be utilised by rolling down the hill, no formal equipment required. 3. The Moreton Bay tree in this reserve is magnificent and to interfere with it is insupportable diagram SK-08/13. <ul style="list-style-type: none"> • Construction for this slide will surely mean interfering with the tree roots. 4. Retain areas of open turf areas for free play and passive use. Retaining openness of the reserve will cater to a greater variety of park users. Diagram SK-03/10 <ul style="list-style-type: none"> • Is this not contradictory when the area for prescribed play areas are to be enlarged? 5. Designated quiet play area Diagram SK-07/10

	<ul style="list-style-type: none"> • Surely sitting under a beautiful tree and talking is adequate for this quiet play zone. <p>I have used this recreational area for 58 years Children, Grandchildren and Great Grandchildren. The openness and free play character should not be replaced with any more concrete paths and rigid play paraphernalia. Stop overpeopling any green space we have in Waverley.</p> <p>The equipment provided at this Reserve is quite adequate for the amount of people using it.</p>
--	--

Survey Responses											Expand playground footprint		Play equipment		Play equipment		Play equipment		Footpaths		Fig Tree	Park Furniture				Playground Surface		Fencing	
respondents	How often do you visit Marlborough Reserve?	How long do you spend in Marlborough Reserve?	How satisfied are you with the existing Marlborough Reserve and Playground?	What do you do in Marlborough Reserve?	Please specify.	In the future, what would you like to see in Marlborough Reserve or in the play space?	What do you like about the draft Marlborough Reserve and Play Space upgrades?	What do you dislike about the draft Marlborough Reserve and Play Space upgrades?	What is your age range?	If you visit with children, how many and how old are they?	Support	Oppose	Support upgrade equipment	Oppose upgrade equipment	Support slide	Oppose slide	Support basket swing	Request traditional swing	Support paths	Oppose paths	Expressed concern	Oppose relocating park furniture	Support relocating park furniture	Request additional park furniture	Oppose rubber soft-fall surface	Support rubber soft-fall surface	Support	Oppose	
1	Daily	30 mins	Very satisfied	Walk, Play, Walk Dog, Relax		Upgrade to existing play equipment but remainder of reserve remain 'undeveloped' as this is it's charm. Maintain free / off lead dog play area in central and southern part.	Footpaths around outside. New equipment to replace old. Water fountain- please consider option to allow dogs to drink from water fountain equipment.	Feels overdeveloped. The metal slide.	51 - 60	2-3 nieces/ nephews. Under 4.		1	1			1				1									
2	Daily	1 hour	Neutral	Ball games, Play, Exercise, Relax		A climbing area that caters for children ages 5 and above. Climbing web. This park is used every day after school & on weekends by numerous school children in the local area. It is a big heart and hub for the community.	Climbing area, slide, swings 2 please, tee pee quiet area, larger picnic table and chairs, nature play	At least 2 swings would be best	41 - 50	4 or more age range 5 years to 10 years	1		1		1			1											
3	Weekly	1 hour	Very satisfied	Play		Climbing equipment	Caters kids over 5		31 - 40	5 and 7			1																
4	Daily	30 mins	Very satisfied	Walk, Ball games, Play, Walk Dog, Other	use the park with family daycare group - mostly on play equipment and swings, picnic at table, run up and down hill through trees, count and identify birds	fencing around playspace esp north end closest to road. swings similar length and safe distance from other activities, role play window/humpyden, safe roundabout or 4person see saw, alphabet or numbers somewhere, aboriginal themes/symbols in softfall	Maintaining trees and adding more native vegetation and natural play space. Keeping play equipment, love the idea of slide and climbing to use hill. love the idea of info on local wildlife.	Doesnt mention intended colours in playground but would like more natural colours than in recent Brown St upgrade. Would like to keep the water fountain, table and rubbish bins (although bin could be further from play /eating area as sometimes it stinks)	51 - 60	4 between the ages of 2 and 5			1		1												1		
5	Daily	30 mins	Very Dissatisfied	Play, Walk Dog		Greater play experiences for children across different age brackets. The current equipment is aged and feels unsafe for my kids	Excellent upgrade design. Appeals to a wide range of children. Improved safety and utilisation of the space	Nothing	31 - 40	2 children. 3 year old and baby. We plan to continue to visit the park as our children grow up in the reserve.	1		1														1		
6	Daily	10 mins	Neutral	Walk, Exercise		Adult body weight exercise equipment, all weather basketball backboard / ring and half-court yo give pre-teen / teenagers things to do (not just little kids).	Plants, paths and slides	Seems very much about young children (aged below 7) vs other children & residents. You get children eventually grow up and we should want to keep them in the local area vs having to head to Waverley Park	41 - 50	4 children aged 8-14			1		1				1										
7	Monthly	30 mins	Very Dissatisfied	Play		I would love a great play area for kids, with upgraded equipment. If there is any scope for rubber flooring in the playground area that would be wonderful. Woodchips etc are dreaded by all parents - they make children so dirty and children eat them.	great variety of playground and kids activities		31 - 40	1 child, 2 years old	1		1				1									1			
8	Weekly	1 hour		Play, Exercise, Relax		Better playground facilities - they are currently in disrepair/rusty/unsafe: all weather playground surface (ie. not barkchip); a water fountain that kids can reach and drink from; additional park table/bench; larger flat area so kids can play with balls	good shade cover and spacious.	Aged play equipment, very sloped site that limits safe play.	41 - 50	Two kids: 2.5 and almost 5.	1		1				1						1		1				
9	Daily	2 or more hours	Neutral	Relax		Better lighting. More picnic areas. Exercise area. Terracing.	Footpaths	1. Too much play area. (it seems to have doubled) Not enough adult area. eg. picnic tables, exercise area, terracing. 2. prefer to have the pram ramps lower down Brown and Blandford. 3. Not enough new vegetation. 4. No plan for the lower slopes.	51 - 60			1							1					1					
10	Weekly	30 mins	Very satisfied	Play		rock climbing wall. lots of shade. toilets.	fence, new slide. nature play.	playgrounds must have swings! and UPF 50+ sunshades covering play area	<20	Me and my sister. I am 5 and she is 2.			1		1			1								1			
11	Monthly	1 hour	Very Dissatisfied	Walk, Ball games, Play, Relax, Other	My 4 year old boy plays and explores.	Updated equipment, more play equipment, a level grass area for playing. A community garden. Native bee hives, wild flowers, fencing.	Updated playground equipment, fencing between playground and street	N/A. It would be great to see more garden options included.	41 - 50	1 child aged 4 and a half	1		1		1												1		
12	Monthly	30 mins	Very Dissatisfied	Play		Cleaner safer play area for children, more signage about dogs on leads near play area	Any improvement is good! Barriers between play area and road are important		31 - 40	1 child of 1.5yrs	1		1														1		
13	Weekly	1 hour	Neutral	Ball games, Play		I would like the play space to continue to include suitable play equipment for school age children with slides monkey bars climbing frames and swings. Not toddler equipment like recent surrounding park upgrades. Minimal disturbance of natural environment.	Slide down slope assuming it is steep enough to be fun for older children	Replacing swings with basket swings. Kids of all ages love normal swings. The basket swings are not the same and don't require them to use core strength to swing themselves. Actual play equipment looks limited. Monkey bars or similar would be nice	31 - 40	5 and 7			1		1			1			1								
14	Daily	1 hour	Very satisfied	Walk, Ball games, Play, Walk Dog, Exercise, Relax		It just needs a refurbishment nothing more, your proposal will destroy the peacefulness of the park, the whole point of being a reserve!	nothing, as above, it just needs a refurbishment by you doing this upgrade you are destroying the tranquility and peacefulness the reserve brings!	everything! have you considered the exponential increase of foot and car traffic! the increase in garbage, the decrease in bird wildlife and native animals.	31 - 40	2-13		1	1						1		1						1		
15	Daily	1 hour	Very Dissatisfied	Play		Natural play equipment using wood and stone. No bright colours to distract from beautiful natural elements.	New planting and natural elements. An upgrade to fun, safe play equipment catering to different ages will be well utilised. Working water station. Bin area that can't overflow after weekend parties which will increase. Keep lots of park as open space. Thx	Like to minimise softfall, natural colours/ materials only, fences not necessary if planting there, keep table in sunshine position, ensure bin can't overflow from parties, no concrete pathway in to park, protect tree roots, no sign on opposing street pls	31 - 40	3 children 9yrs, 6yrs, 3yrs (and their friends the same age)			1						1		1			1			1		
16	Daily	30 mins	Very satisfied	Walk, Ball games, Play, Walk Dog, Exercise, Relax		I do not want to see any extensive changes. The park is a peaceful place and I am concerned that your proposal will gentrify the park too much.	Nothing.	I like the ruggedness of the reserve as it currently is, almost a little piece of bush in the middle of suburbia. The native animals and birds that we see there and the peace and quiet. I imagine the extra people would overflow the bins with rubbish.	41 - 50	2 children. Teenagers with the dogs.		1		1					1								1		
17	Daily	10 mins	Very satisfied	Relax		more flat areas	nothing its over the top, it will destroy the ambience of the park		61 - 70	2 years old		1		1		1				1			1					1	
18	Daily	10 mins	Very satisfied	Walk Dog		More trees to attract more wildlife.	The only thing we like are the " minor " landscaping upgrades which may help attract a bit more wildlife to the reserve. We would like to see more trees planted and the large existing trees to be properly arbores to reduce the chance of limb breakage.	You are turning our quiet nature reserve into a large noisy kids playground far beyond the existing footprint. I don't want any new equipment south of the figtree (downslope slide) I don't want the picnic table moved, nor do I want a concrete footpath.	51 - 60	One who is 16 years old.		1		1		1			1			1					1		
19	Weekly	30 mins	Very satisfied	Walk, Relax		Upgrade of the playground within the existing footprint, preserving the character of the reserve as natural as possible.	Upgrade of the playground equipment	Extension of concrete footpath along the whole of the perimeter of the reserve is unnecessary and takes away from the green space, extension of the play area	61 - 70	1 - 2 years old		1	1						1										
20	Daily	30 mins	Very satisfied	Walk, Ball games, Play, Walk Dog, Exercise, Relax		Much more regular cutting of the grass.	Nothing. It is way too big (simply use the existing footprint. Do not expand it). There should not be a fence. This will impede the dog owners and the children who, from my daily observation, especially on weekends, like to freely play all over the park.	It is way too big. It uses too much of the existing park. It will impede the people who exercise and/or play with their dogs. The fence will impede the free play of children who like to run all over the park.	41 - 50	Whose children? My nieces? My friends' children? My neighbours' children? They range from 4-12.		1		1		1											1		
21	Daily	1 hour	Neutral	Play, Walk Dog		Refurbish existing children's area and equipment only. Do not expand size. Do not install an absolutely unrequired fence.	Upgrade of existing equipment and amenity within the current footprint is definitely due.	Do not expand size. Do not install an unrequired fence. This will take away from the open nature of the park. Will also reduce the common area and from Dog play areas of which Waverley is sorely lacking.	41 - 50			1	1															1	
22	Daily	30 mins	Very satisfied	Walk, Walk Dog, Relax		An existing safety feature of the park is that it slopes away from the roads. While I am happy that council is required to update play equipment to new safety standards, I very strongly desire the natural space to remain substantially as it is.	Very little. It is an expensive exercise on council's initiative, will largely destroy the laid back nature existing currently.	Almost all. Where did the initiative to: A. Spend such funds as council complains about costs rising? B. create an artificially natural set of spaces? C. risk the death of the marvellous play - friendly tree by surrounding it with matting.	61 - 70	We visit with many children as our daughter grew up, being immediate neighbours and have done for many years. My wife contributed to the decision of this.		1	1		1				1										
23	Daily	30 mins	Neutral	Walk, Walk Dog, Relax		Returfing of the grassy verge, 90° parking INTO the park on Blandford Avenue. This will RADICALLY IMPROVE the park utilisation while solving the growing parking and navigation problems on Blandford Avenue.	Not a lot. The playground facilities need enhancement but it does NOT need expanding	It's absolutely TERRIBLE! It is FUNDAMENTALLY misreading the park problem! It will make the park a FAR WORSE recreational facility.	61 - 70	3 and 5 (two nieces)		1	1						1										
24	Daily	30 mins	Neutral	Walk, Play, Exercise, Relax		Upgraded of the play equipment and use of the topography of the hill into the play equipment. Also a better space utilising the sunny areas for picnic or sitting space. Also, exercise equipment for adults to use.	The use of the hill with the slide and the paths through the park. I like the native plant space just not the location. I like the swing and soft fall and sidewalk around the playground.	I'm worried about the effect on the fig tree with softfall underneath. I think the native space should be moved somewhere else and more done at the bottom of the park where the drain is. Exercise equipment would let the park be utilised more by adults.	31 - 40	1, 2 years old.	1		1		1				1		1				1				

25								Refer Appendix 2 (Email submissions)				1		1		1				1								
26								Refer Appendix 2 (Email submissions)				1	1			1				1								
27								Refer Appendix 2 (Email submissions)				1	1			1						1						
28								Refer Appendix 2 (Email submissions)				1	1							1	1							
29								Refer Appendix 2 (Email submissions)				1		1		1				1	1	1				1		1
30								Refer Appendix 2 (Email submissions)				1	1			1		1		1	1						1	
.								Refer Appendix 2 (Email submissions)				1		1						1								
										TOTALS	7	18	23	7	7	11	2	4	4	13	8	5	0	2	2	3	5	9

Survey Report

06 July 2010 - 27 October 2019

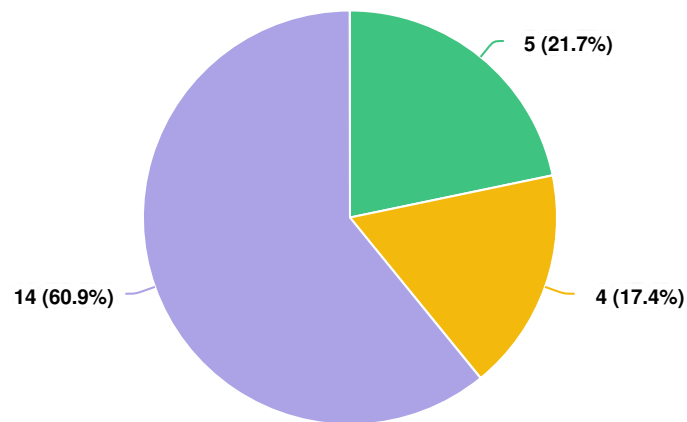
Marlborough Reserve Playground - Have Your Say

PROJECT: Marlborough Reserve Playground Upgrade

Have Your Say Waverley



Q1 | How satisfied are you with the updated concept plan for Marlborough Reserve Playground?



Question options

● Very Dissatisfied ● Neutral ● Very satisfied

Optional question (23 responses, 1 skipped)

Q2 What do you like about the updated concept plan?

Anonymous

9/25/2019 03:28 PM

the per the top slide has been removed and the upgrade predominately is replacing what's there and in the same location

Anonymous

9/28/2019 02:13 PM

In the document you said that the existing footprint of the playground would be used but clearly it is not as there are additional elements being put in at the west side of the fig tree which will impact our access and view of the park.

Anonymous

9/28/2019 02:20 PM

More greenery and plants are encouraged.

Anonymous

9/30/2019 09:32 PM

Modernising and adding lots of natural landscaping elements. Better footpath access around the park.

Anonymous

9/30/2019 11:41 PM

Items 1,2,3,4,5,6,8,11,12 Climbing elements made of stone/wood on the slope under tree

Anonymous

10/01/2019 06:26 AM

I love it. The range of equipment, springer toys, cubby, swings and the nature play will be very well used. With balance of the park for people to walk and kids to have free play is great! I love the new table, fountain and low fencing.

Anonymous

10/01/2019 12:22 PM

more options for older kids

Anonymous

10/01/2019 01:17 PM

Equipment for older children, nature play elements, cubby house and soft fall.

Anonymous

10/02/2019 07:48 AM

That's its getting up graded. What's currently in place is so updated and we hardly use this play ground. Once updated we will use it all the time.

Anonymous

10/06/2019 05:24 PM

That there's climbing equipment that caters for kids of all ages and abilities. Also like the natural play elements of the design!

Anonymous

10/08/2019 02:47 PM

Reduced perimeter footpath. Bigger multi-play structure. Neutral colour softball surface.

Anonymous

10/08/2019 04:47 PM

Barrier fence

Anonymous

10/08/2019 04:53 PM

Natural and within current footprint

Anonymous

10/08/2019 04:55 PM

New equipment

Anonymous

10/08/2019 05:12 PM

Like that its not imposing

Anonymous

You have modified the original proposal in line with the MAJORITY of

10/08/2019 05:45 PM

feedback received and we commend you for that. We like the fact that the original footprint has not been extended and that there is no equipment to be built to the south of the figtree.

Anonymous

new children playground features

10/08/2019 07:52 PM

Anonymous

the diversity of new play areas for children, including the new native garden

10/15/2019 06:14 AM

Anonymous

It fits with the area and does not impact on any existing trees

10/17/2019 02:27 PM

Anonymous

I actually like the current equipment but if it has to change, I like the spider climbing idea. I think going back to timber is very 80's. Bright colours are better for children.

10/19/2019 06:38 PM

Anonymous

More plants and additional trees should be put in at the same time

10/24/2019 03:53 PM

Anonymous

I like the climbing equipment that caters for the older children who play here on a daily basis. I like the 2 swings

10/25/2019 11:42 AM

Optional question (22 responses, 2 skipped)

Q3 What do you dislike about the draft concept plan?

Anonymous

9/25/2019 03:28 PM

-

Anonymous

9/28/2019 02:13 PM

I do not like where the pathways are to be located or the 'new signs' or the new bin or the cubby house as they are directly in our line of sight and will diminish the nature vista of the park that we currently have. It will also increase noise. Not happy

Anonymous

9/28/2019 02:20 PM

The colour of the cubby house is not blending in with the natural colours of the reserve. Please remove from design as location looks to be outside the current playground footprint extending the play area to current non-play area. Nothing, but I preferred the original concept.

Anonymous

9/30/2019 09:32 PM

Anonymous

9/30/2019 11:41 PM

Item 7,9 Slide aesthetic is awful, even with planting. Kids climb slides there is usually conflict + mud. Planting indicated at 9 does not obscure view from B'ford ave residents. Reject synthetic materials on slope. 7 plantings should be spec as low grass

Anonymous

10/01/2019 06:26 AM

I preferred the cubby house picture in the previous design

Anonymous

10/01/2019 12:22 PM

still limited play options and new slide would have been great

Anonymous

10/01/2019 01:17 PM

Would like path at base of park for the multiple people who walk across at that end of the park often through long wet grass and dog poo. Dog poo bin and bags at base of park.

Anonymous

10/06/2019 05:24 PM

n/a

Anonymous

10/08/2019 02:47 PM

Reduction in nature play elements (stepping stones, etc) esp. not using steep topography. 4 stepping stones is insufficient. Reduced extent of sensory garden. Removal of quiet play zone.

Anonymous

10/08/2019 04:53 PM

Not sure of sculpture play and with existing equipment

Anonymous

10/08/2019 04:55 PM

No

Anonymous

10/08/2019 05:12 PM

No but perhaps not serving non families

Anonymous

10/08/2019 05:45 PM

We don't want to see the addition of any large scale play equipment and absolutely no increase in the existing footprint. The park is primarily a quiet nature reserve used for dog walking, meditation, relaxation, reading and bird watching.

Anonymous

We would like to return to the previous plan where more of the park is used

10/08/2019 07:52 PM

for the childrens playground.

Anonymous

10/10/2019 08:30 PM

I liked the original plan that had a lot more play equipment

Anonymous

10/19/2019 06:38 PM

The low looping fence is similar to the one at Bronte which is a trip hazard. You can't see it in amongst the tall grass. Please change to something more visible both to stop children running on the road and to stop grandparents falling over.

Anonymous

10/24/2019 03:53 PM

I would exclude the perimeter footpath and just have a ramp as shown at the Blandford side and an additional ramp on the Brown St side for access.

Anonymous

10/25/2019 11:42 AM

I prefer the first draft plan from May and all the wonderful play elements it included. I loved the nature play and the slide from Draft 1.

Optional question (19 responses, 5 skipped)

Q4 Do you have any additional comments?

Anonymous

9/25/2019 03:28 PM

-

Anonymous

9/28/2019 02:13 PM

Understand that play equip needs upgrading but when you say you will remain in the current footprint, please adhere to that. I hope that there will NOT be new signs disallowing dogs off leash in the park as currently more dogs than kids use the park!!

Anonymous

9/28/2019 02:20 PM

Understand the need to upgrade play equipment but you need to understand that we bought in the area because of the raw natural beauty of the reserve and do not want extra traffic from outside the area or more noise. No impact to current plants and birds!

Anonymous

9/30/2019 09:32 PM

As an ex Blandford Ave resident with kids, an upgrade to this park would have been much welcomed when we lived there. It is a bit tired in its current form and needs a facelift.

Anonymous

9/30/2019 11:41 PM

+ Paths need to be natural color. + Nets under tree to simulate being branches and prevent falls. + Balancing beams + flashing street sign on upper Blandford to slow traffic with smiley/sad face. + table at bottom of park on Brown street side

Anonymous

10/01/2019 06:26 AM

My kids who are 3 1/2 and 9 and who live across from the park use the play ground all the time. We are very excited about an upgrade.

Anonymous

10/01/2019 01:17 PM

This is a beautiful design and caters to all demographics including older children who are often forgotten. We live directly opposite the park and we are very excited.

Anonymous

10/06/2019 05:24 PM

There are many kids in this neighbourhood who utilise this park. There are also many toddlers and babies in the area that will be future users. Catering for a range of age and abilities is critical

Anonymous

10/08/2019 02:47 PM

Need more nature play/social/thinking elements for older kids (9-12+ age) esp. in steep area, seperate from younger kids area. Needs a paved path across park at southern boundary (current goat track), for plant health and minimise dog poo incidents.

Anonymous

10/08/2019 04:47 PM

As much natural and wood based play as possible.

Anonymous

10/08/2019 04:53 PM

More frequent maintenance more dog bag dispenser and more bins. At top and bottom of park at each end.

Anonymous

10/08/2019 04:55 PM

Shade near the seats, too exposed in summer

Anonymous

10/08/2019 05:12 PM

More picnic settings within park

Anonymous

10/08/2019 05:45 PM

The playground equipment chosen should only cater to younger children up to 12 years as we do not want older kids hanging around in the evenings

Anonymous

10/08/2019 07:52 PM

partaking in antisocial behaviour. The park is cherished as a quiet nature reserve to be enjoyed by all.

We would like to see a fenced off dog park added to the bottom of the area so that dogs can roam freely and not near the children in the playground. Also, access for prams at the top play area is important for parents.

Anonymous

10/10/2019 08:30 PM

Would be great to have a broader range of play equipment like in the first plans released. That would make the playground more appealing to families with older kids/siblings

Anonymous

10/17/2019 02:27 PM

I think my dog will like it but we will see..

Anonymous

10/19/2019 06:38 PM

No more concrete, please ! No concrete path. If it is a problem going across the park through the long grass then Council could cut the grass every three weeks instead of six weeks.

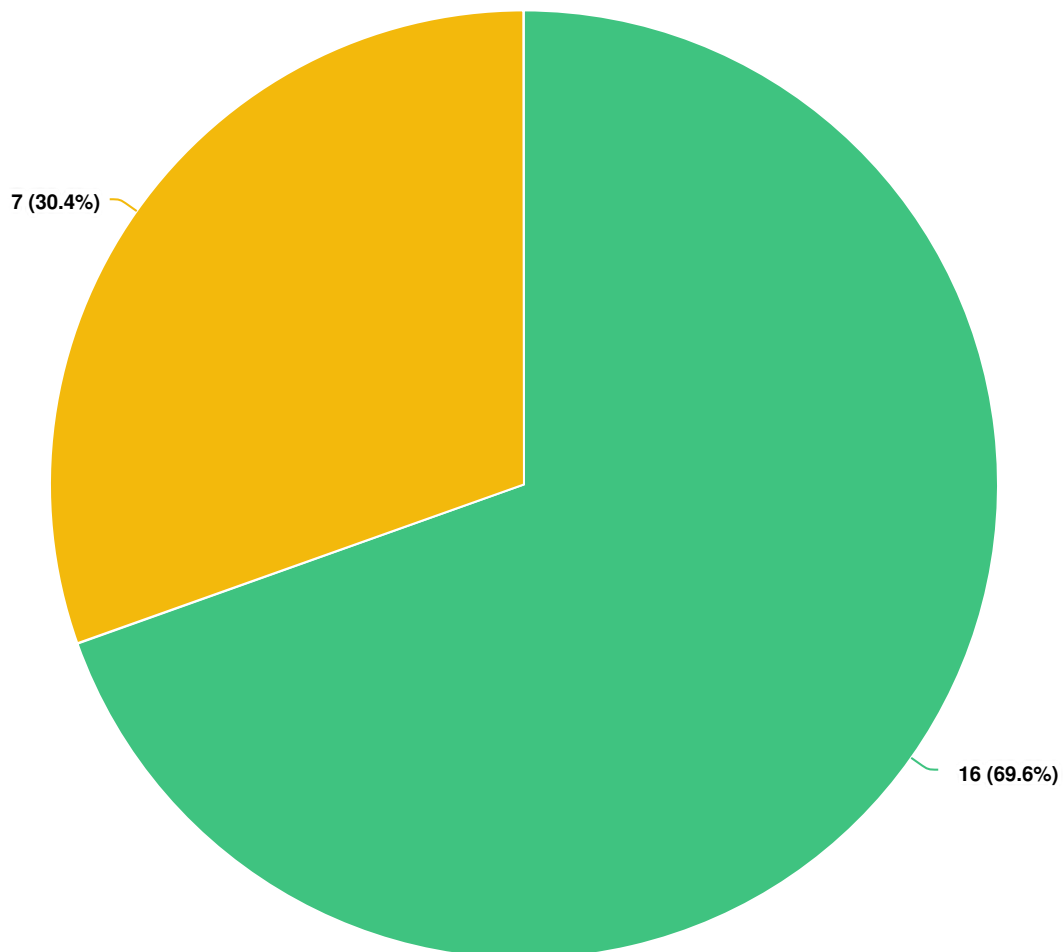
Anonymous

10/25/2019 11:42 AM

I believe it is crucial to understand that this park is like a backyard for many families in the area who live in apartments and don't have the luxury of a house and a garden. It is a vital hub for the children in the local community.

Optional question (19 responses, 5 skipped)

Q5 | Do you visit with children?



Question options

☒ Yes ☐ No

Optional question (23 responses, 1 skipped)

Q6 | If so, how many?

Anonymous 3

9/30/2019 09:32 PM

Anonymous 3

9/30/2019 11:41 PM

Anonymous 2

10/01/2019 06:26 AM

Anonymous 2

10/01/2019 12:22 PM

Anonymous 4

10/01/2019 01:17 PM

Anonymous 1

10/02/2019 07:48 AM

Anonymous Two kids

10/06/2019 05:24 PM

Anonymous 1 or 2 of my own, or 3-4 for a play-date.

10/08/2019 02:47 PM

Anonymous 2

10/08/2019 04:47 PM

Anonymous 2

10/08/2019 07:52 PM

Anonymous 3

10/10/2019 08:30 PM

Anonymous 2

10/15/2019 06:14 AM

Anonymous Two

10/19/2019 06:38 PM

Anonymous 2

10/25/2019 11:42 AM

Optional question (14 responses, 10 skipped)

Q7 How old are they?

Anonymous 8, 6, 4

9/30/2019 09:32 PM

Anonymous 4,8,10

9/30/2019 11:41 PM

Anonymous 3 1/2

10/01/2019 06:26 AM

Anonymous 5 and 8

10/01/2019 12:22 PM

Anonymous 4,5,7,8

10/01/2019 01:17 PM

Anonymous 20 months

10/02/2019 07:48 AM

Anonymous age 10 and 7

10/06/2019 05:24 PM

Anonymous 11 yo doesn't enjoy this play area, 7 yo has fun. Very hard to bring any kids here when one of them objects.

10/08/2019 02:47 PM

Anonymous 1 and 4

10/08/2019 04:47 PM

Anonymous Age 10 months and 4 years old

10/08/2019 07:52 PM

Anonymous 2, 6, 8yrs

10/10/2019 08:30 PM

Anonymous 3 and 6

10/15/2019 06:14 AM

Anonymous 1 and 3

10/19/2019 06:38 PM

Anonymous 6 and 8

10/25/2019 11:42 AM

Optional question (14 responses, 10 skipped)

Marlborough Reserve Email Submissions. Consultation October 2019	
25	<p>Response to the revised plan for the Marlborough Reserve.</p> <ol style="list-style-type: none"> 1. The reserve is a very special open setting where people of all ages come to enjoy the open space. Because of the topography, it is relatively cold space and there are only a few spots that offer sun, at best, for 6 months of the year. These spaces are used by lots of people of all ages, not just children. The top end of the park is a sunny spot and is a haven for those who get no sun due to the topography blocking direct sunlight. 2. As much as we love the children in the neighbourhood, strenuously object to this northern end of the park becoming like many other parks in the neighbourhood where the accessible areas have become lost to the general public and to become dominated by play zones for children. <ol style="list-style-type: none"> 3. We object to the proposal for the following reasons a. The proposal dominates the northern section of the park for children and introduces more infrastructure than the existing equipment across a larger footprint than existing. Where the key finding of the consultation was to keep the equipment close to the existing footprint, that has not been met. The play equipment and footprint in this current proposal runs from object 6 at the west to object 20 in the east. This encroachment is illustrated in document (SK6). b. The corridor of rubber Softfall is a larger area than existing and is unacceptable. c. The movement of the swing set to in front of the picnic table puts the table into the playground. It destroys the openness and view of the reserve that is currently enjoyed at that table. d. We object to the cubby house. This is a park, an opportunity for outdoor play. It detracts from the aesthetic of the natural environment e. The concept plan makes no recommendations for what is to be planted. This is a really important part of the proposal which has not been addressed. We would like to see a more diverse plant selection than exist in the Belgrave and Stephen St Reserves. f. We object to the use of plain concrete pathways. There are better materials that can truly enhance the site and that are site specific. 4. The new landscaping along the coastal walk below the Waverley Cemetery is excellent. The terracing, the planting, the use of stone and pebbled pathways is exceptional. In contrast, the concrete staircase from the coastal walkway at Bondi up to Marks Park is shocking. It is such an iconic location and we can't believe that a better landscaping solution was not applied. We object to the crude and distasteful use of plain concrete in the proposed pathways in Marlborough Reserve, rather than attractive and site-specific access points, in both design and materials used. 5. 5 trees have been removed from the south end of the park. One was particularly significant. These cannot be replaced in our lifetime. What is the plan for replacing these? Where is the plan to enhance the biodiversity of this space? <p>In summary, the proposal needs further refinement to justify the expenditure and enhance the park for all people.</p>
26	<p>Thank you for taking the following feedback in to account.</p> <p>Live directly across rd from the park on Brown Street. Two kids 8, 5. Visit daily with children. Walk across park twice a day to public school.</p> <p>Fully support current design and revisions.</p> <p>Pls use only natural materials when building play area etc. no colours natural wood only.</p>

	<p>Pls could you include some very high, challenging rope and climbing play for older kids. Pls have as much shade as possible on play zones.</p> <p>Pls include dog poo bin at the base of the park as this is a major deterrent to dog owners responsibly disposing of dog poo. My kids would step in poo while playing or walking to school around once a week.</p> <p>Pls include a natural style pathway eg gravel at the base of the park. The grass is often long so hard to see dog poo, get wet in winter, get spiked by sticks, sandy soil goes in to shoes so path would make things much simpler for many residents that cross at that end. There was support for this at the communication consult as long as path is not concrete.</p> <p>Love the natural play elements. Logs and big chunks of sandstone are played with endlessly in my experience.</p> <p>Pls natural colour for soft fall.</p> <p>Pls ask landscapers to replace soil/ turf in very sandy dry areas on brown street side and big patch in the middle.</p> <p>Love the planting and low fence for little ones who play there. Some stepping stones through some green areas would be great.</p> <p>Thanks for all of your work, we are very excited about the beautiful new space you have designed.</p>
27	<p>Hi,</p> <p>I am aware that consultation has ended on this however wanted to send a few comments and queries through to your team.</p> <p>We are local residents who live down on Palmerston Avenue.</p> <p>Primarily would like to say that we along with other young families in the street were very excited by the original concept plan.</p> <p>Secondly it seems that from reading consultation report the concerns of a number of residents adjacent to the park have dramatically impacted on the original design and reduced the opportunities of the upgrade.</p> <p>Part of the reason we were so excited is that this playground has the greatest potential to be a young family gathering space in the area. This is very much needed given all the children now popping up in the residential flat buildings on Palmerston avenue. The small 2 bedroom units are great for young families (We know of 4 new babies that have been born in the two buildings adjacent in the just the last few months let alone the existing children). With limited access to backyards Marlborough Reserve is a very important space.</p> <p>The playground on Brown street recently upgraded is great but cannot offer the same community opportunities as Marlborough Reserve. The park has the potential to be a truly great community space. The concerns regarding noise ect. with the original design</p>

	<p>seem very mean spirited, and anti-community particularly given the low key nature of this type of use, how local the area is and the benefits of the upgrade for the broader community.</p> <p>I was surprised to see the report conclusions following the conversations I have had with neighbours. We believe you may have had an under representation at the consultation due to so many people being happy with the original proposal.</p> <p>We apologise for the late engagement but would really welcome the opportunity to reopen this discussion now seeing the conclusions from the recent consultation and the changes to the original design.</p> <p>We will be seeking to follow this up with our Lord Mayor along with some support from the local community but would greatly appreciate if you could provide any advice or recommendations on the process, key issues or where the project is at before we do.</p>
--	---

Survey Response				Playground footprint			Play equipment		Play equipment		Footpaths			Fig Tree		Park Furniture		Playground Surface		Fencing	
respondents	What do you like about the updated concept plan?	What do you dislike about the updated concept plan?	Do you have any additional comments?	Support new size	Preferred original design	Playground still too large	Satisfied with proposed equipment	Request more equipment	Satisfied Slide has been removed	Dissapointed inground slide has been removed	Satisfied paths have been reduced	Satisfied access is being provided to playground	Dissatisfied with proposed paths	Satisfied council is taking mesures to protect existing trees	Not satisfied council is taking mesures to protect existing trees	Satisfied with proposed furniture	Request additional park funiture	Oppose rubber soft-fall surface	Support rubber soft-fall surface	Support	Oppose
1	the per the top slide has been removed and the upgrade predominately is replacing what's there and in the same location	-	-	1			1		1												
2	In the document you said that the existing footprint of the playground would be used but clearly it is not as there are additional elements being put in at the west side of the fig tree which will impact our access and view of the park.	I do not like where the pathways are to be located or the 'new signs' or the new bin or the cubby house as they are directly in our line of sight and will diminish the nature vista of the park that we currently have. It will also increase noise. Not happy	Understand that play equip needs upgrading but when you say you will remain in the current footprint, please adhere to that. I hope that there will NOT be new signs disallowing dogs off leash in the park as currently more dogs than kids use the park!!			1	1						1								
3	More greenery and plants are encouraged.	The colour of the cubby house is not blending in with the natural colours of the reserve. Please remove from design as location looks to be outside the current playground footprint extending the play area to current non-play area.	Understand the need to upgrade play equipment but you need to understand that we bought in the area because of the raw natural beauty of the reserve and do not want extra traffic from outside the area or more noise. No impact to current plants and birds!			1															
4	Modernising and adding lots of natural landscaping elements. Better footpath access around the park.	Nothing, but I preferred the original concept.	As an ex Blandford Ave resident with kids, an upgrade to this park would have been much welcomed when we lived there. It is a bit tired in its current form and needs a facelift.		1		1	1		1		1									
5	Items 1,2,3,4,5,6,8,11,12 Climbing elements made of stone/wood on the slope under tree	Item 7,9 Slide aesthetic is awful, even with planting. Kids climb slides there is usually conflict + mud. Planting indicated at 9 does not obscure view from B'ford ave residents. Reject synthetic materials on slope. 7 plantings should be spec as low grass	Paths need to be natural color. + Nets under tree to simulate being branches and prevent falls. + Balancing beams + flashing street sign on upper Blandford to slow traffic with smiley/sad face. + table at bottom of park on Brown street side				1	1	1								1	1			
6	I love it. The range of equipment, springer toys, cubby, swings and the nature play will be very well used. With balance of the park for people to walk and kids to have free play is great! I love the new table, fountain and low fencing.	I preferred the cubby house picture in the previous design	My kids who are 3 1/2 and 9 and who live across from the park use the play ground all the time. We are very excited about an upgrade.				1									1					
7	more options for older kids	still limited play options and new slide would have been great						1		1											
8	Equipment for older children, nature play elements, cubby house and soft fall.	Would like path at base of park for the multiple people who walk across at that end of the park often through long wet grass and dog poo. Dog poo bin and bags at base of park.	This is a beautiful design and caters to all demographics including older children who are often forgotten. We live directly opposite the park and we are very excited.	1			1										1	1			
9	That's its getting up graded. What's currently in place is so updated and we hardly use this play ground. Once updated we will use it all the time.						1														
10	That there's climbing equipment that caters for kids of all ages and abilities. Also like the natural play elements of the design!		There are many kids in this neighbourhood who utilise this park. There are also many toddlers and babies in the area that will be future users. Catering for a range of age and abilities is critical				1														
11	Reduced perimeter footpath. Bigger multi-play structure. Neutral colour softball surface.	Reduction in nature play elements (stepping stones, etc) esp. not using steep topography. 4 stepping stones is insufficient. Reduced extent of sensory garden. Removal of quiet play zone.	Need more nature play/social/thinking elements for older kids (9-12+ age) esp. in steep area, seperate from younger kids area. Needs a paved path across park at southern boundary (current goat track), for plant health and minimise dog poo incidents.					1			1										
12	Barrier fence	Not sure of sculpture play and with existing equipment	As much natural and wood based play as possible.																	1	
13	Natural and within current footprint	No but perhaps not serving non families	More frequent maintenance more dog bag dispenser and more bins. At top and bottom of park at each end.	1													1				
14	New equipment		Shade near the seats, too exposed in summer				1														
15	Like that its not imposing		More picnic settings within park	1													1				

16	You have modified the original proposal in line with the MAJORITY of feedback received and we commend you for that. We like the fact that the original footprint has not been extended and that there is no equipment to be built to the south of the figtree.	We don't want to see the addition of any large scale play equipment and absolutely no increase in the existing footprint. The park is primarily a quiet nature reserve used for dog walking, meditation, relaxation, reading and bird watching.	The playground equipment chosen should only cater to younger children up to 12 years as we do not want older kids hanging around in the evenings partaking in antisocial behaviour. The park is cherished as a quiet nature reserve to be enjoyed by all.	1					1												
17	new children playground features	We would like to return to the previous plan where more of the park is used for the childrens playground.	We would like to see a fenced off dog park added to the bottom of the area so that dogs can roam freely and not near the children in the playground. Also, access for prams at the top play area is important for parents.		1		1				1	1									
18		I liked the original plan that had a lot more play equipment	Would be great to have a broader range of play equipment like in the first plans released. That would make the playground more appealing to families with older kids/siblings		1			1													
19	the diversity of new play areas for children, including the new native garden						1														
20	It fits with the area and does not impact on any existing trees			1			1							1							
21		I liked the original plan that had a lot more play equipment			1			1													
22	I actually like the current equipment but if it has to change, I like the spider climbing idea. I think going back to timber is very 80's. Bright colours are better for children.	The low looping fence is similar to the one at Bronte which is a trip hazard. You can't see it in amongst the tall grass. Please change to something more visible both to stop children running on the rad and to stop grandparents falling over.	No more concrete, please ! No concrete path. If it is a problem going across the park through the long grass then Council could cut the grass every three weeks instead of six weeks.										1								
23	More plants and additional trees should be put in at the same time	I would exclude the perimeter footpath and just have a ramp as shown at the Blandford side and an additional ramp on the Brown St side for access.											1								
24	I like the climbing equipment that caters for the older children who play here on a daily basis. I like the 2 swings	I prefer the first draft plan from May and all the wonderful play elements it included. I loved the nature play and the slide from Draft 1.	I believe it is crucial to understand that this park is like a backyard for many families in the area who live in apartments an don't have the luxury of a house and a garden. It is a vital hub for the children in the local community.		1		1	1		1											
25	Refer Appendix 5 (Email submissions)					1						1		1				1			1
26	Refer Appendix 5 (Email submissions)			1			1	1	1								1			1	
27	Refer Appendix 5 (Email submissions)				1			1		1											
				7	6	3	14	9	4	4	2	2	4	1	1	1	5	2	1	2	1



LEGEND

- ① Existing *Ficus elastica* (Rubber Fig) Tree
 - ② Existing swing set
 - ③ Existing bin
 - ④ Existing picnic table
 - ⑤ Existing playground
 - ⑥ Existing seat
 - ⑦ Existing drinking fountain
 - ⑧ Existing seat
 - ⑨ Existing garden
 - ⑩ Existing turf
 - ⑪ Grove of existing *Melaleuca* (Paperbark trees)
- ⬭ Structural Root Zone ⬭ Tree Protection Zone

MARLBOROUGH RESERVE AND PLAYGROUND UPGRADE

UPDATED CONCEPT DESIGN

EXISTING RESERVE CONDITION

SK-01

Date: 06.11.2019

Drawn by: BP

Scale: 1:400@A3
1:200@A1





① Existing *Ficus elastica* (Rubber Fig) Tree



② Existing double seat swing set



③ Existing bin



④ Existing picnic table



⑨ Grove of existing *Melaleuca* (Paperbark) trees



⑩ Existing spring



⑤ Existing play equipment



⑥ Existing seat



⑦ Existing drinking fountain



⑧ Existing seat

MARLBOROUGH RESERVE AND PLAYGROUND UPGRADE

UPDATED CONCEPT DESIGN

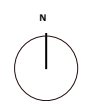
EXISTING PLAYGROUND CONDITION

SK-02

Date: 06.11.2019

Drawn by: BP

Scale: 1:200@A3
1:100@A1



WAVERLEY
COUNCIL



LEGEND

- 1 Retain existing trees for shade amenity and to maintain the reserves existing shaded and calm ambiance.
 - 2 Mulch under Fig tree
 - 3 Footpath
 - 4 Access path to playground
 - 5 Sensory gardens with native plant species to support local native plants, encouraging children to interact with the natural elements of the playground.
 - 6 Low garden hoop fence
 - 7 New timber multi-play unit with numerous play elements of different difficulty levels catering to a variety of ages and abilities.
 - 8 New springer play element
 - 9 New double seat swing set
 - 10 New rubber softfall surface under equipment. Colours to be neutral.
 - 11 Nature play elements such as timber stepping stones and balancing beams.
 - 12 Cubby house
 - 13 Park signs with educational facts about Waverley's ecological corridor and native flora and fauna.
 - 14 Retain existing Turf
 - 15 Screen boundary planting
 - 16 New pram ramps
 - 17 Existing seat to be retained
 - 18 New seat
 - 19 New picnic table to replace old table in current location.
 - 20 New drinking fountain
 - 21 New bin
- Structural Root Zone ○ Tree Protection Zone

MARLBOROUGH RESERVE AND PLAYGROUND UPGRADE

UPDATED CONCEPT DESIGN

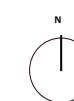
PROPOSED PLAYGROUND CONCEPT PLAN

SK-03

Date: 06.11.2019

Drawn by: BP

Scale: 1:400@A3
1:200@A1



WAVERLEY
COUNCIL



① Nature play elements



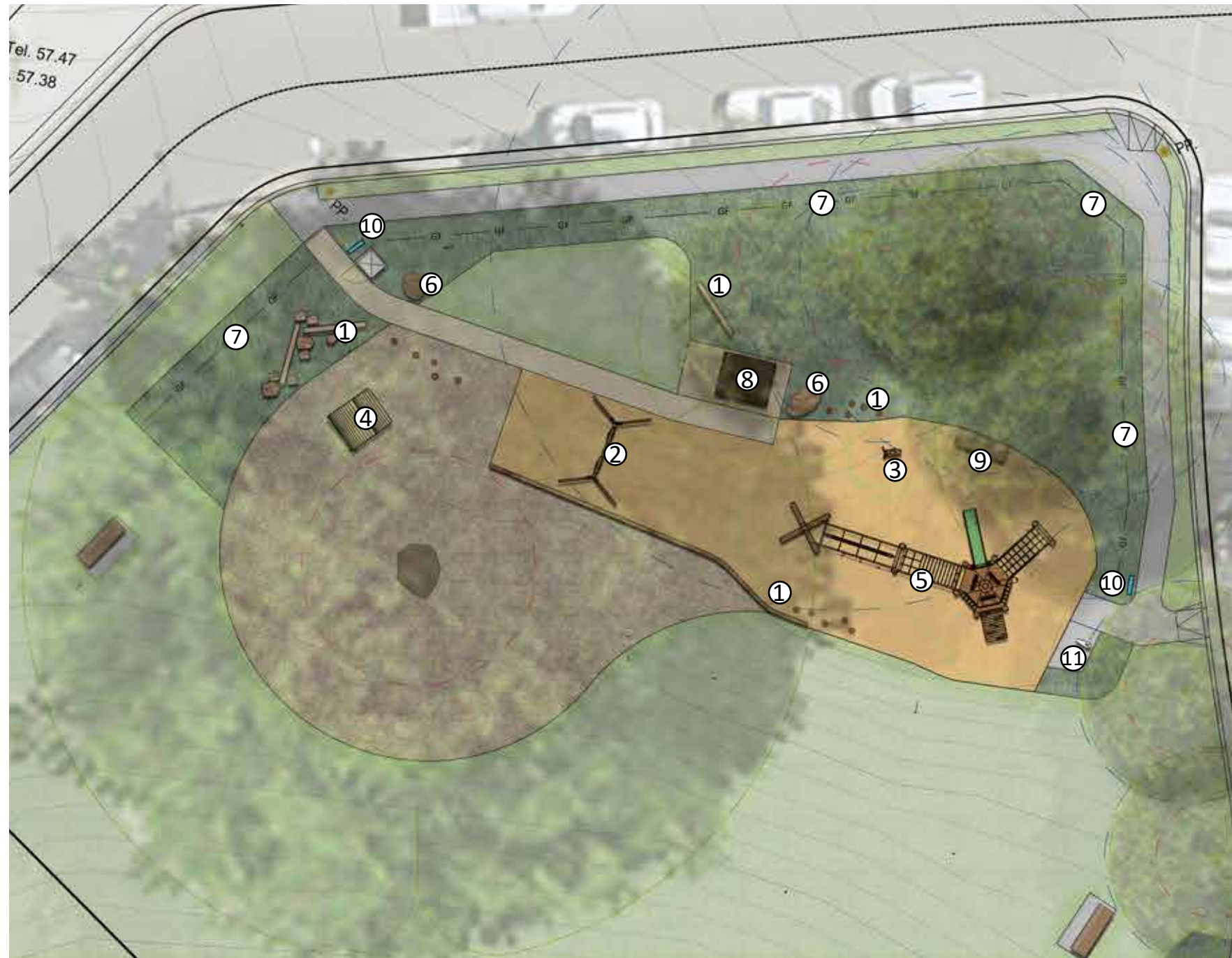
② New double seat swing set



③ New springer play element



④ Cubby house



⑤ New timber multi-play unit



⑥ Sculptural play elements



⑦ Low garden hoop fence



⑪ New drinking fountain



⑧ New picnic table



⑨ New seat



⑩ Park signs

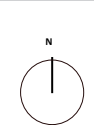
MARLBOROUGH RESERVE AND PLAYGROUND UPGRADE

UPDATED CONCEPT DESIGN

PROPOSED PLAYGROUND CONCEPT PLAN AND CHARACTER IMAGES

SK-04

Date: 06.11.2019
Drawn by: BP
Scale: 1:200@A3
1:100@A1



WAVERLEY
COUNCIL



Current playground



Upgraded playground





Current playground



Upgraded playground

