



The Bondi Memorial





The concept integrates art and landscape, whereby the elements of the “artwork” and the landscaped setting\*, are indelibly linked, to make a place in Marks Park for contemplation, healing and commemoration.

Here, the setting is less axial but still dominated by landscape, that of Marks Park itself, the ocean and sky.

The memorial remembers a series of crimes that are in fact shockingly violent, in both their motive and action. We want this memorial to be a spatial experience and visual poem to bear witness to this sad and moving history.

First sighted as a series of jagged columns, reaching up above the scrub, their profile forming a discordant silhouette, the columns signal and mark the place of the memorial. Upon approach a side path slips through the grass spurs, inviting entry into the space - a simple sandstone clearing within the scrub and grass of the park landscape. A long, low horizontal wall provides a defining edge, leading the passerby through the copse of columns, into the space of the place.

The clear horizon ocean view is underlined by the long low wall. The columns block and break the horizon. The wall wraps the space terminating in a small promontory that angles to an untrammelled view of the vast space of the ocean, inviting individual contemplation of the sublime and infinite horizon, with its intimation of human vulnerability, and loss. This eastern view catches the morning sun, offering light and the hope implicit in every sunrise.

The vast landscape and the history of this place is condensed for a moment into this intimate space.

Turning finally, from this view a seemingly happenstance rainbow is revealed, each colour encapsulated within the cloak of their corten envelope. The colours capture the eastern light, the discordant columns are married as a unified flag for hope, unity and enduring humanity.

This place also offers space for community to gather, to remember and to heal – the gentle slopes and integrated stone benches focussed on the central space. This little amphitheatre sits within the shape and character of the landscape, accommodating gathering when needed, without seeming lonely or underused when unoccupied.

\* This landscape + art approach is not uncommon and can be witnessed for example in Hyde Park where the Archibald Fountain, is sited at the intersection of 2 paths surrounded by a hemisphere of trees. One empowers the other.

Jane Irwin Landscape Architecture + McGregor Westlake Architecture





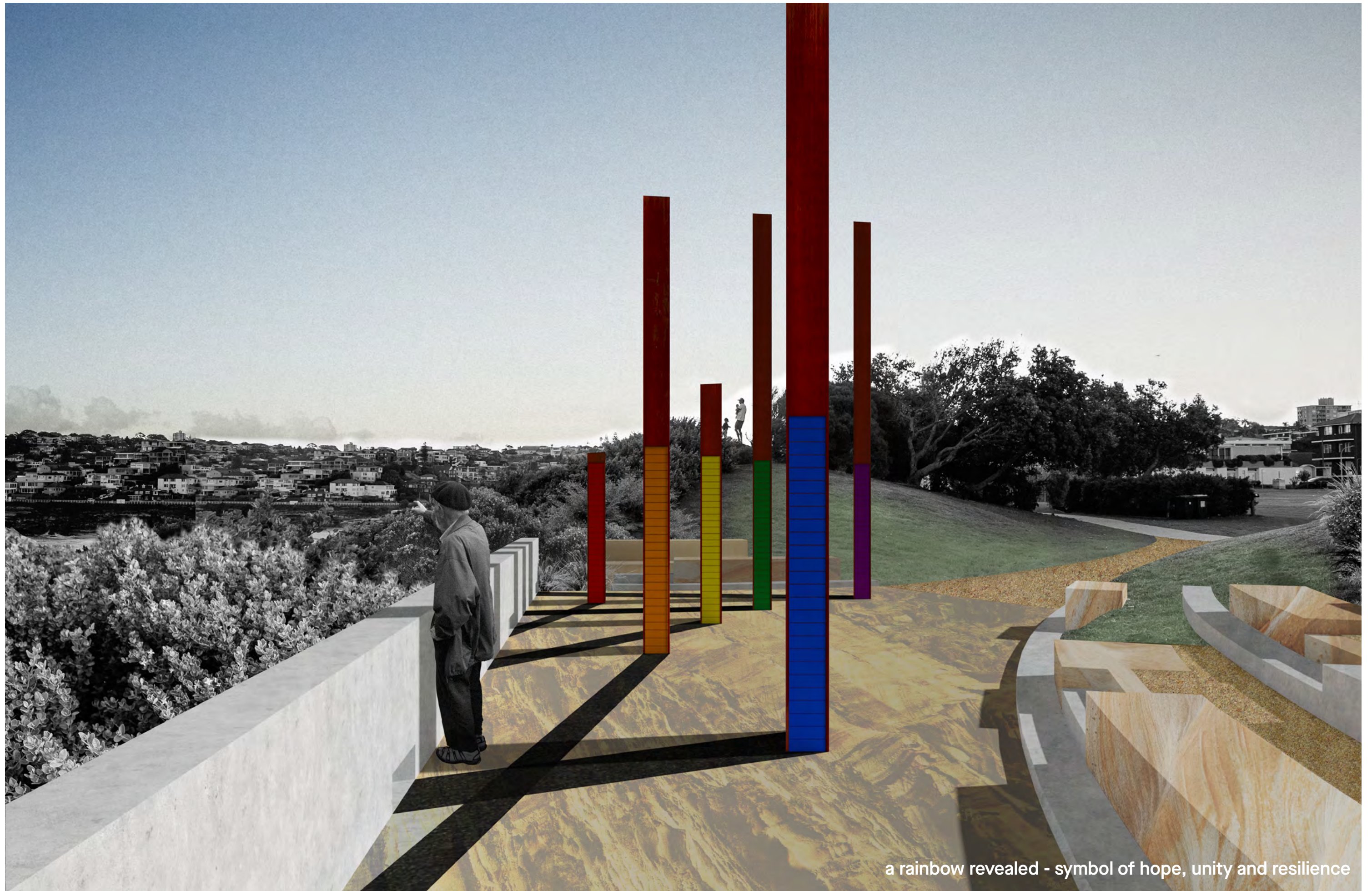
the memorial is a significant and visible part of the wider landscape - a sentinel to passers-by





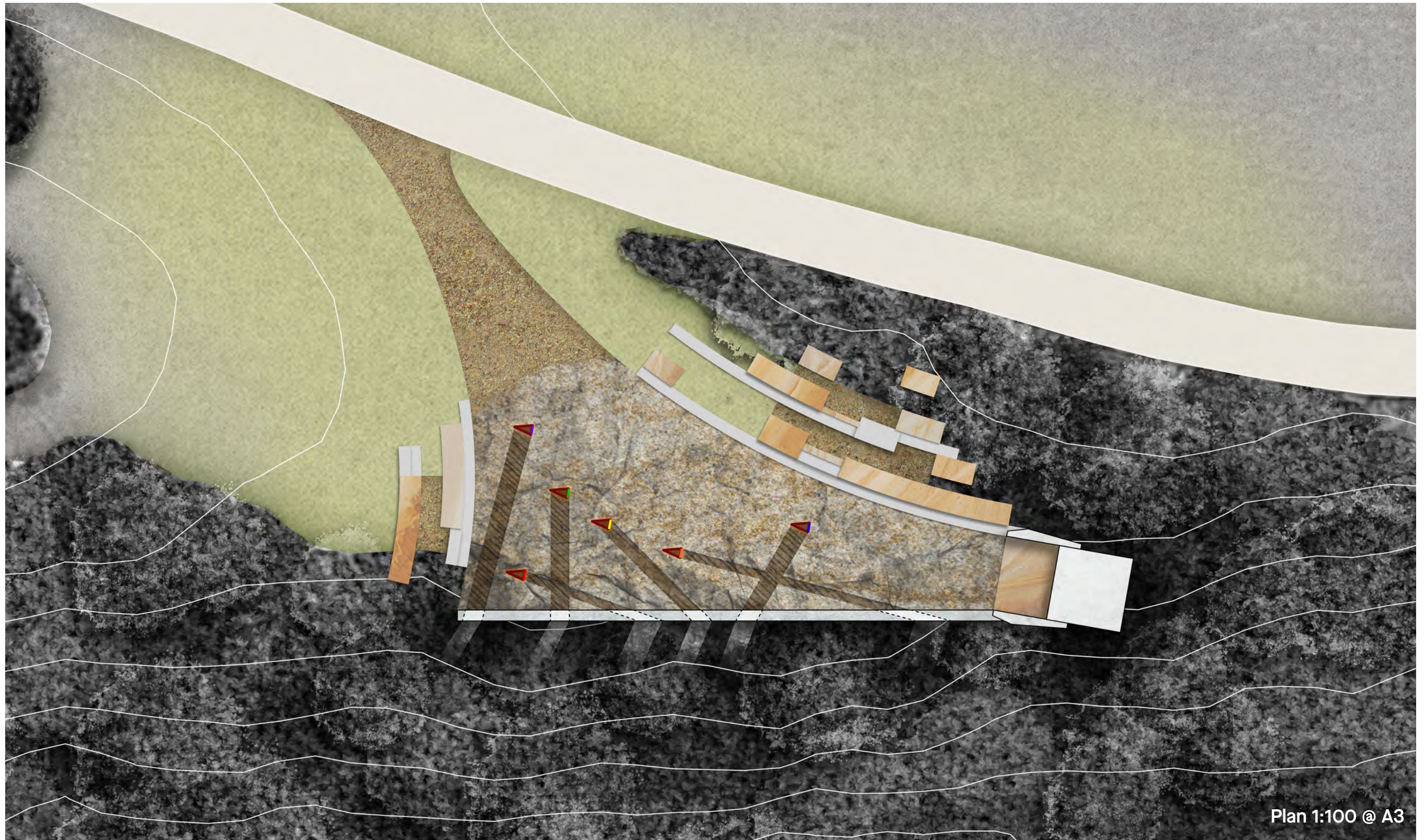
the discordant silhouette breaks the sky, redolent of the violence of the past





a rainbow revealed - symbol of hope, unity and resilience

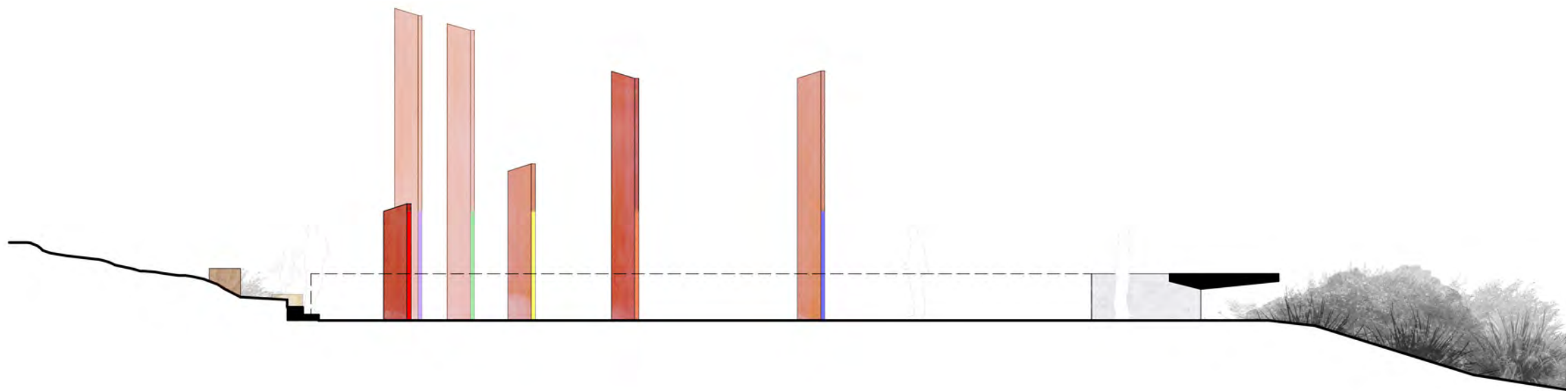




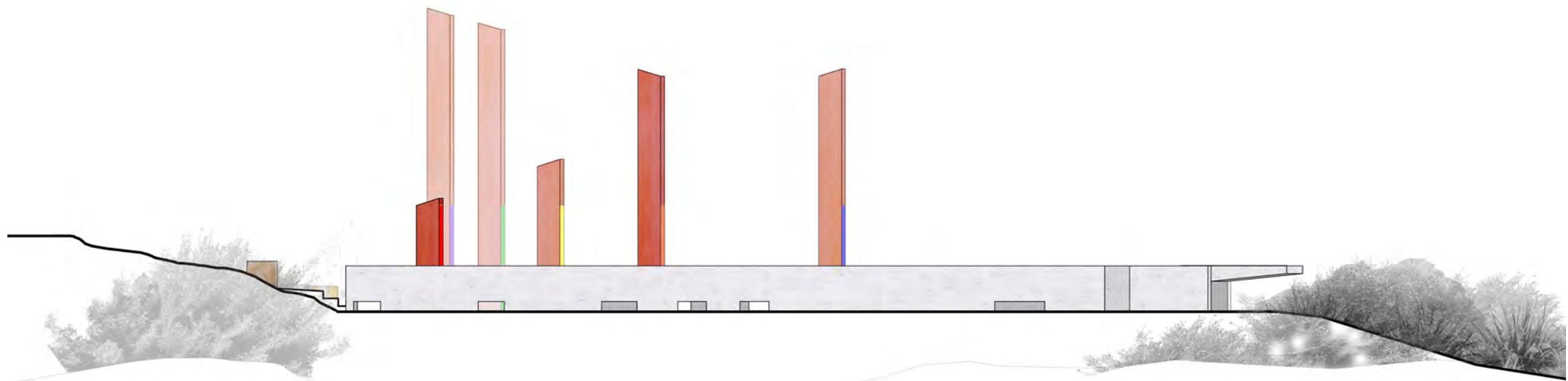




cross section to the sea



section



elevation



### Social engagement

We see the site used on a day to day basis, attracting interest from passers by as well as those with a targeted purpose. The memorial has small and intimate spaces for individual contemplation and memory, but site is big enough to support a gathering of people for a commemorative or educative event, with grass slopes and stone benches forming a gentle amphitheatre space for casual seating.

Specific engagement strategies should evolve with development of the design in the next stage.

### Materiality, sustainability and details

#### The space

Landscape space carried out by landscape contractor:

- general grading to shape existing space, balance cut and fill
- paving and associated subsurface – recycled sandstone and quarry offcuts, recycled base materials
- concrete edge wall – insitu concrete with recycled aggregate where possible
- edges and benches – insitu concrete edges, to match edge wall, recycled and repurposed sandstone sourced from Council depot if available, or from stoneyards and mason's yards
- indigenous coastal planting – tubestock
- make good to turf

#### The poles

- Corten structure and skin forming the 2 long sides of an isosceles triangle, that then frame the ceramic facings that form the “rainbow” as seen in the last perspective image – specialist steel manufacturer, specialist ceramic manufacturer



# Jane Irwin

Principal - Jane Irwin Landscape Architecture

Jane Irwin is recognised as a leader in the field of landscape architecture in Australia. She has over 30 years experience in landscape architecture, and has built a small and vibrant studio practice over the last 20 years. JILA now has a diverse range of projects, from intimate and experimental landscapes to broad scale urban design.

Jane takes a vital interest in the public domain, and participates in competitions and urban design programs that foster innovative thinking about its structure and future. She has been part of teams carrying out planning and design of major urban centres in Sydney, Sydney Olympic Park, Wollongong City Centre, Newcastle, and recently in Canberra.

Jane has a passion for ensuring good public and private domain outcomes through a design philosophy that respects and fosters diversity and interest, reflecting both the individual site and its context.

History	Qualifications
1996 - present	Director - Jane Irwin Landscape Architecture
1995 - 1996	Public domain design coordinator - Olympic Co-ordination Authority at Homebush Bay, for the Government Architect's Design Directorate working in the role of advisor on landscape design and coordination
1991 - 1995	Landscape consultant on contract to Public Works Department and independent commissions. Public and institutional projects, including streetscape works, schools, universities and TAFE
1989 - 1991	Environmental Design Group, Public Works
1987 - 1988	Janie Thomas Associates, Bristol, U.K. Commercial and residential projects
1984 - 1986	EBC Consultants, Sydney
1983 - 1984	Dames and Moore International, Environmental Engineers, Sydney. Landscape Architect for environmental assessment and rehabilitation of mining projects.

## Professional Activities

Past Member, Heritage Council NSW 2013 - 2018
Design Review Panel, LDA Canberra
External Examiner for the UNSW Landscape Architecture program
Jury member, AILA QLD Awards 2017
President, NSW State Chapter, Australian Institute Landscape Architects, 2011 - 2012
Jury member, AILA Victoria Awards 2012
Visiting lecturer at urban design and architecture studios, Sydney University, 2007 - 2010
Session Speaker - IFLA Conference, Sydney, 2006
Houses of the Future exhibition, Sydney Olympic Park, 2005
Gardens of the Future exhibition installation, Botanic Gardens and Sydney Olympic Park, 2004 - 2005
Guest lecturer - Architecture, UTS, 2001 - 2003
Tutor - Department of Architecture, University of Sydney 3rd Year Urban Design Studio, 2000
Creative Village Studio for UNSW - Landscape Architecture, Architecture and Art. Workshop for design of William Street for UDAS, 1999
UNSW - Third year studio for Brickpit Competition, 1998
Landscape for the Olympics, Architecture Bulletin, January Issue, 1997
The Landscape Challenge for Homebush Bay, Paper for 'Big Sky' Conference, 1995

# Peter McGregor

Principal - McGregor Westlake Architecture

Peter McGregor is a founding principal and director of McGregor Westlake Architecture, established in 1999. Peter has more than 20 years experience in large scale art, achitectural and urban design projects, including new parks and squares, street and lane upgrades, including standa alone and integrated artworks.

Under his direction the practice has won 12 AIA and AILA awards for projects including public art, public space, urban design and multi-residential. Several projects have also won a range of building industry and planning awards.

Peter has been involved as a design collaborator in three significant competition winning projects including, the Olympic Village with Philip Thalís and Peter John Cantrill, the Emerging Architects Competition for a Pedestrian Bridge with Partridge Engineers, and the invited Competition for Jacaranda Square with Aspect Studios. He has also competed on open tender for large Public Art Commissions such as the Parramatta Station Wall and the Llankelly Lights at Kings Cross.

Over the past decade he has been invited to participate and collaborate on a range of larger public projects, in association with a broad range of well recognised Landscape Architects, Architects and Urban Designers. Most recently he developed an art + design concept for the new North West Rail Metro in association with Turpin Crawford Studio. Aguably the largest and most integrated public art project Australia wide, the artistic ideas were integrated into the design and documentation of the 8 new stations, associated public plazas and streets. This was recently completed and opened for public use.

History	Competitions, Awards + Public Projects
1999- Present	2019 - Alumni Park, Art, Architctural and Landscape Project with SMM for UNSW
1991 - 1996	2019 - Shortlisted for City of Sydney "anti-terroist" Furniture with SMM
1993-4	2019- Winner Land and Housing for Apartment building in St Marys, with Growth Built.
1992 - current	2017-18 Lighthorse Park Liverpool, Art, Architctural and Landscape Project with Libby Gallagher Studios
1986-92	2018 - NSW AIA Awards - Commendation Interiors for Wlne Cave
1984-90	2018 - NSW AIA Awards - Commendation Small projects for Laneway Studio
1984	2016 - NSW AIA Awards - Architecture Award in Multi Residential for Woolloomooloo Apartments
1978 - 1979	2015-16 Park Zetland for the City of Sydney, Art, Architctural and Landscape Project with Libby Gallagher Studios
	2015 - NSW AIA Awards - Lloyd Rees Award for Woollongong Mall with GAO
	2015 - Immigration Place, ACT Authority, - Finalist with JILA
	2013 - NSW AIA Awards - Lloyd Rees Award for Pitt Street Mall with SMM+ T Caro Architecture.
	2010 - NSW AILA Awards - Urban Design Award for Railway Park, Auburn, with JILA
	2010 - NSW AIA Awards - Architecture Award in Urban Design for Parramatta Interchange Wall
	2009 - NSW AIA Awards - Commendation Award in Urban Design for Jacaranada Square
	2008 - NSW AIA Awards - Architecture Award in Urban Design for Bondi Lookout, Ben Buckler, with 360
	2006 Premiers green Space Award for Auburn Town Centre Master Plan, with JILA
	2008 - NSW AILA Awards - Excellence in Landscape Architecture for Bondi Lookout, Ben Buckler, with 360
	2007 - Nat. Concrete Association- Parramatta Interchange Wall.
	2004- Winner of ideas competition for Lankelly Place Lighting project. With Conybeare Morrison.
	2004 - Winner invited competion for Jacaranda Square, SOPA, with Aspect + Deuce Design
	2002 - Tingira Memorial Park, with JILA, for Woollahra Council
	2002 - NSW AILA Awards, Commendation for Peace Park Newtown, with Kristen Martin Architects.
	2000- National AILA Awards, Art+ Architecture for Chinatown Lighting with Hassell

## Professional Activities

Chairman of Public Buildings and Urban Design AIA Awards Jury 2014
Design Review Panel, Sutherland Shire 2012-2018
Design Review Panel, Canada bay and Strathfield, 2018 - Present
External Examiner for the UNSW Architecture program
Jury member, AILA NSW Awards 2010
Guest lecturer + Tutor Year 4 - Architecture, UTS, 1998 - 2001

## Qualifications

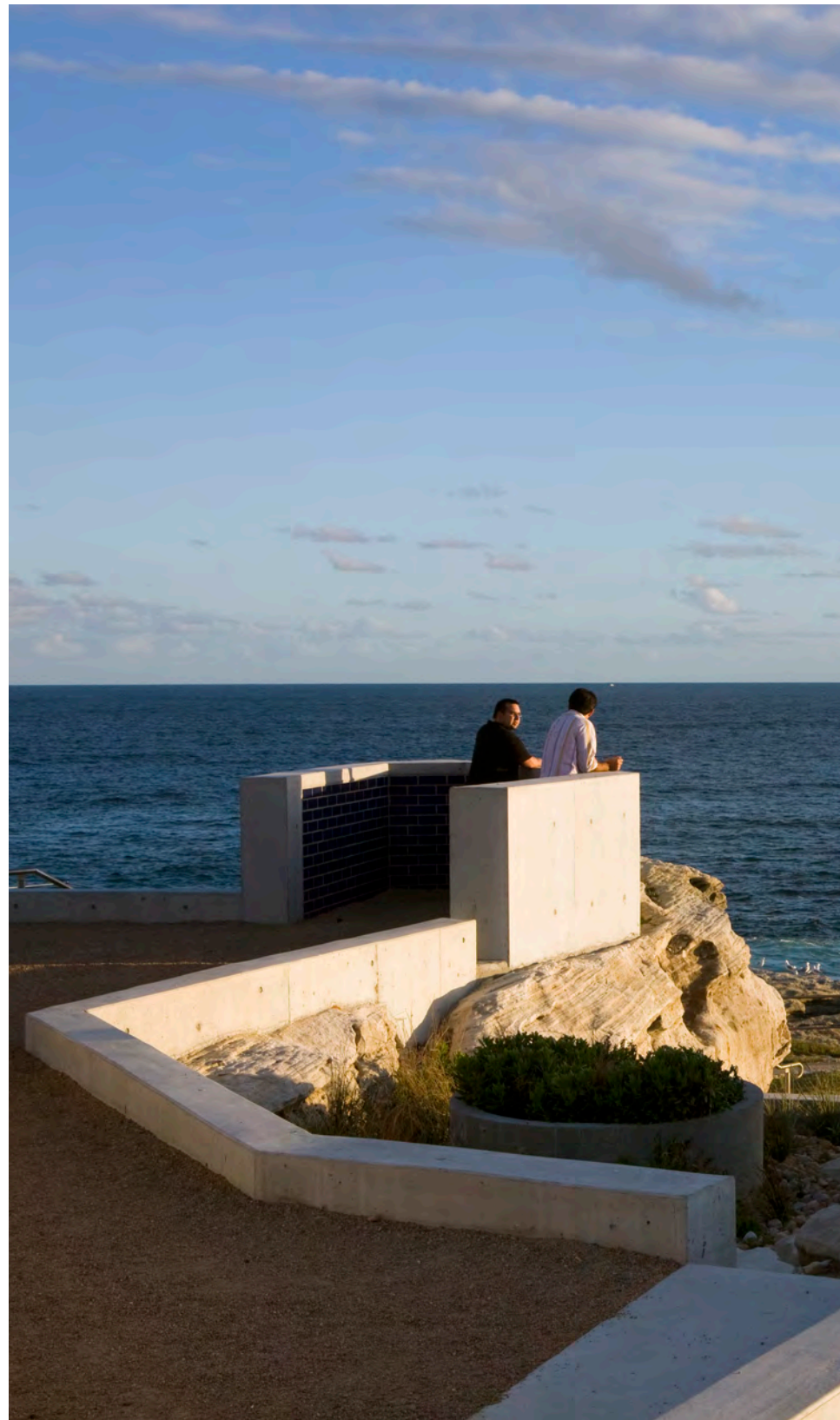
1998 Bachelor of Architecture, UTS
Registered Architect - No.7243
Art Certificate -1979- Nat. Art School.





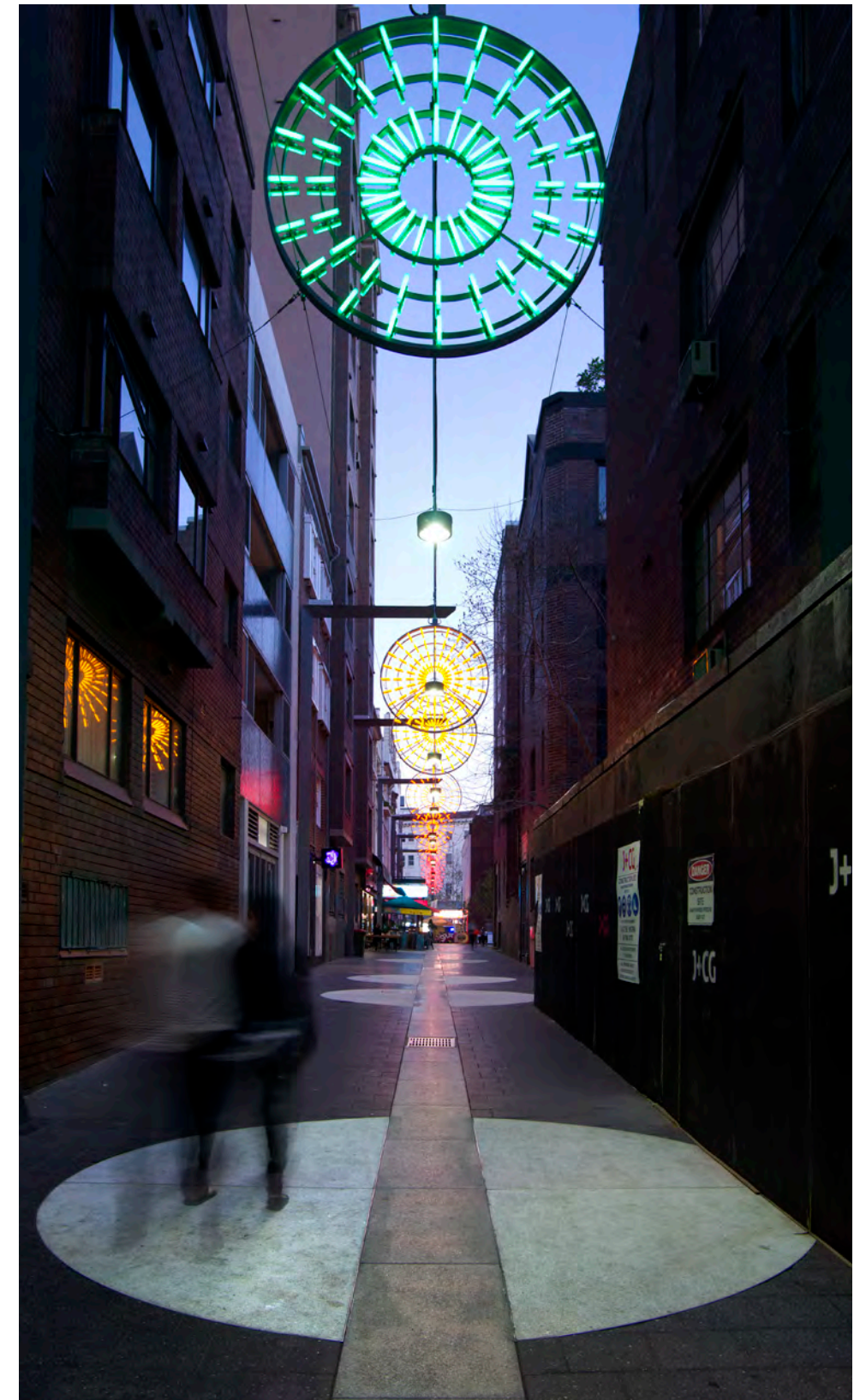
### Garden of Cloud and Stone

Rejuvenation of Thomas St and Hay St in Haymarket by Jane Irwin Landscape Architecture in collaboration with artist Lindy Lee and Hill Talis Architecture + Urban Projects.



### North Bondi Lookout

A viewing place to enjoy the panoramic views and dramatic topography of the stone crags by McGregor Westlake Architecture with 360 Degrees Landscape Architects



### Llankelly Place

A temporary-turned-permanent light display - loved by the local Kings Cross community - became the catalyst for the transformation of a seedy lane into a vibrant eat street. By McGregor Westlake Architecture.





Jane and Peter have worked together on public projects for over 20 years.

Both practices have numerous awards for our landscape, art and architectural projects.

Both of us believe in an artful and spatial approach, whereby landscape, art and architecture are melded into a seamless and memorable experience.

We believe that “Place” is space with meaning and that this project affords such an opportunity.