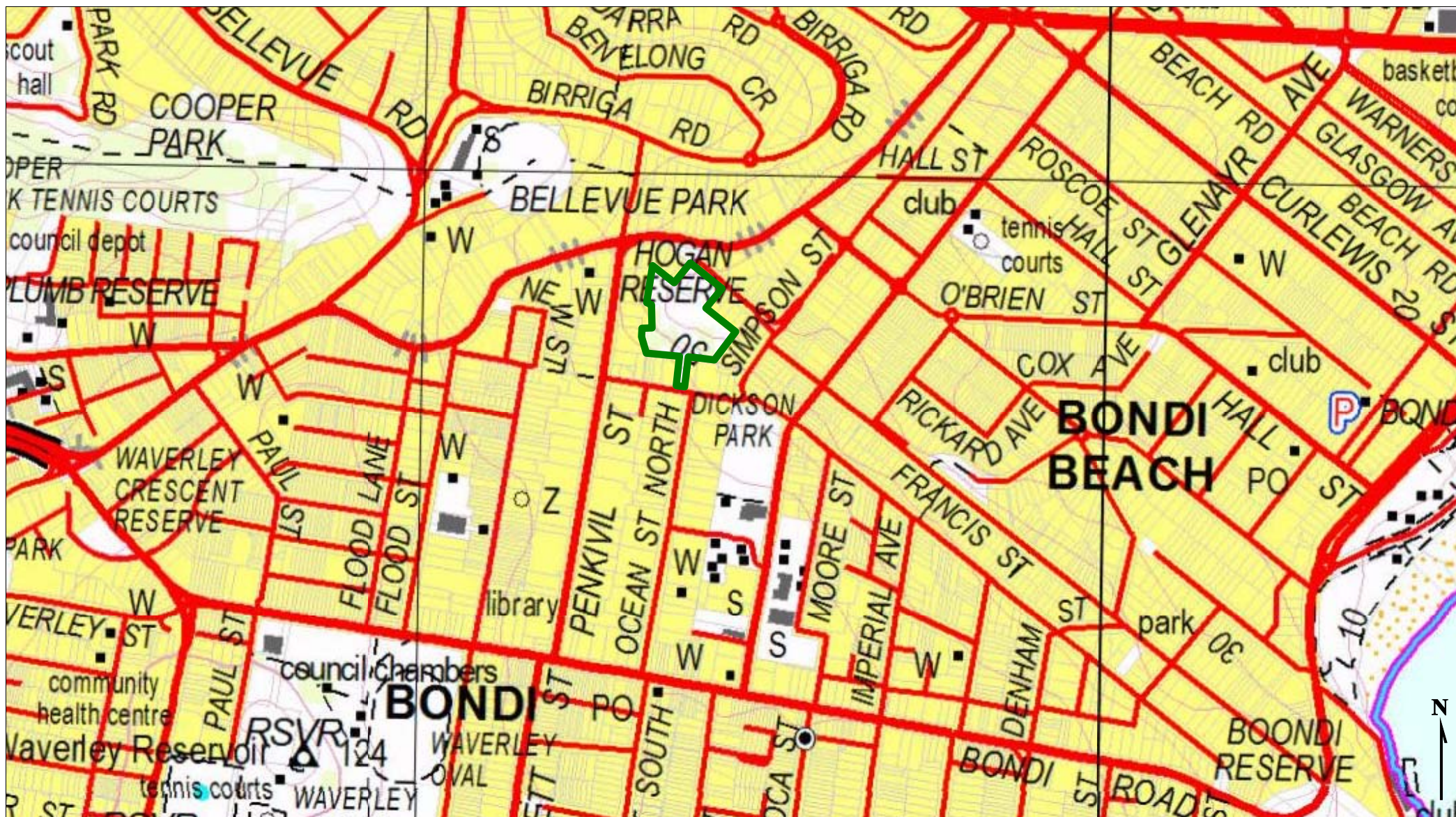


Figures



 Site boundary

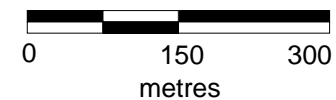
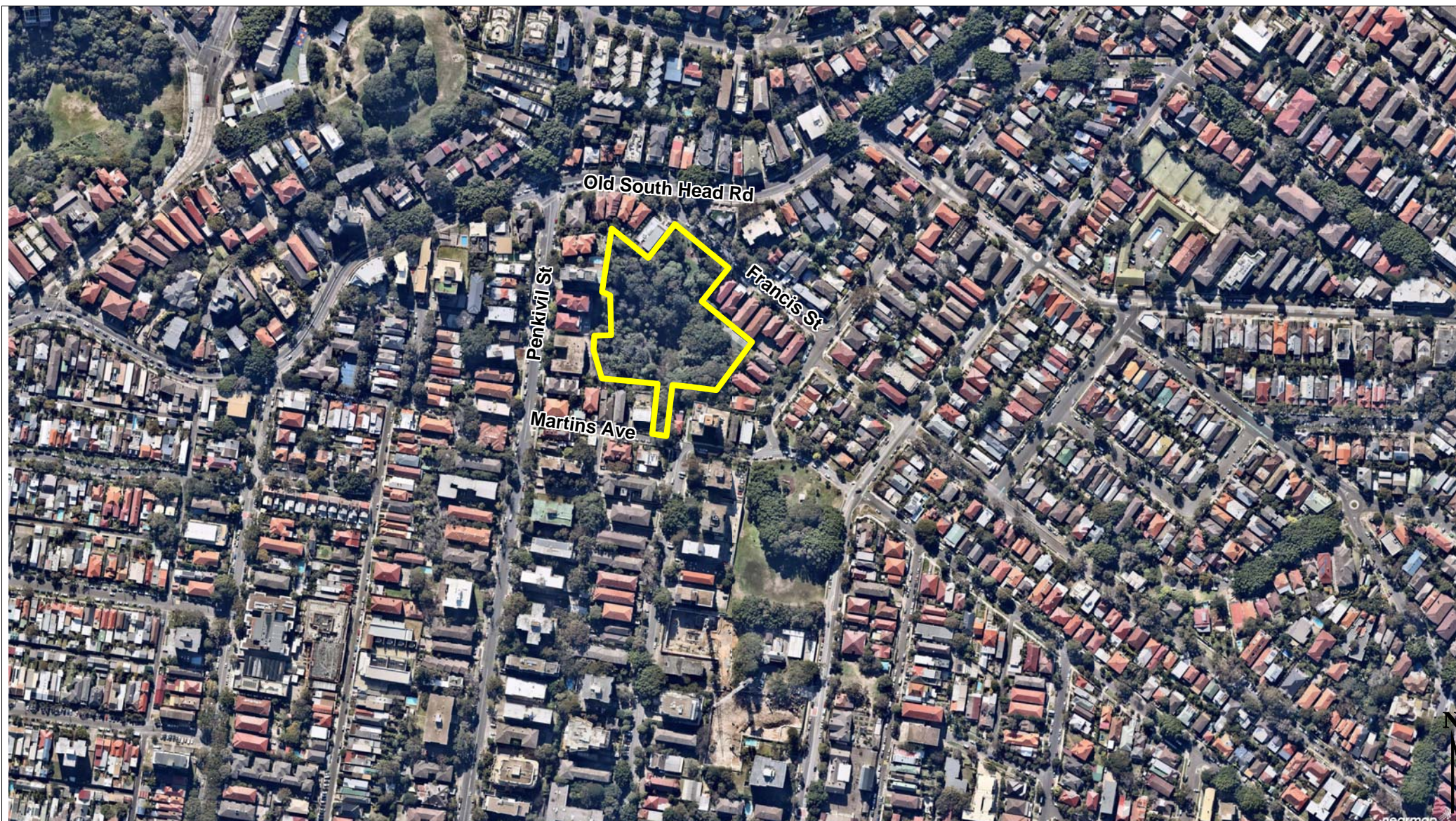


Figure 1a.
Site boundary overlaid on the 1:25 000 topographic map



Site boundary

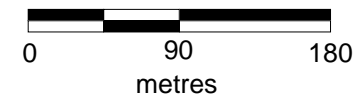


Figure 1b-1.
Site boundary overlaid on the Nearmap aerial photograph
(dated August 11 2015)



Figure 1b-2.
Site boundary overlaid on the Nearmap aerial photograph
(dated August 11 2015) – close up

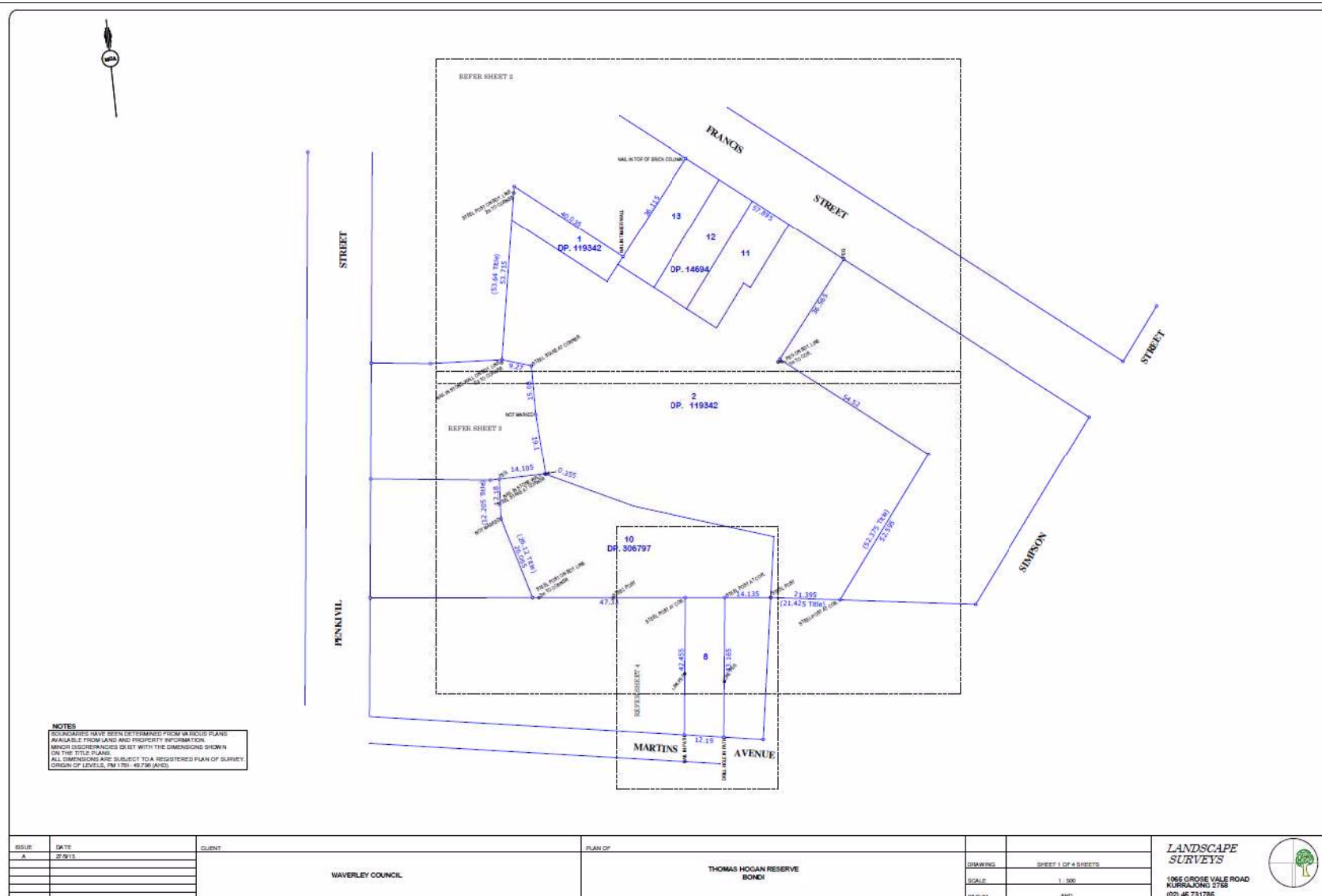


Figure 1c-1.
Survey Plan of Thomas Hogan Reserve for Waverley Council
(Sheet 1 of 4) (Landscape Surveys, 2015)

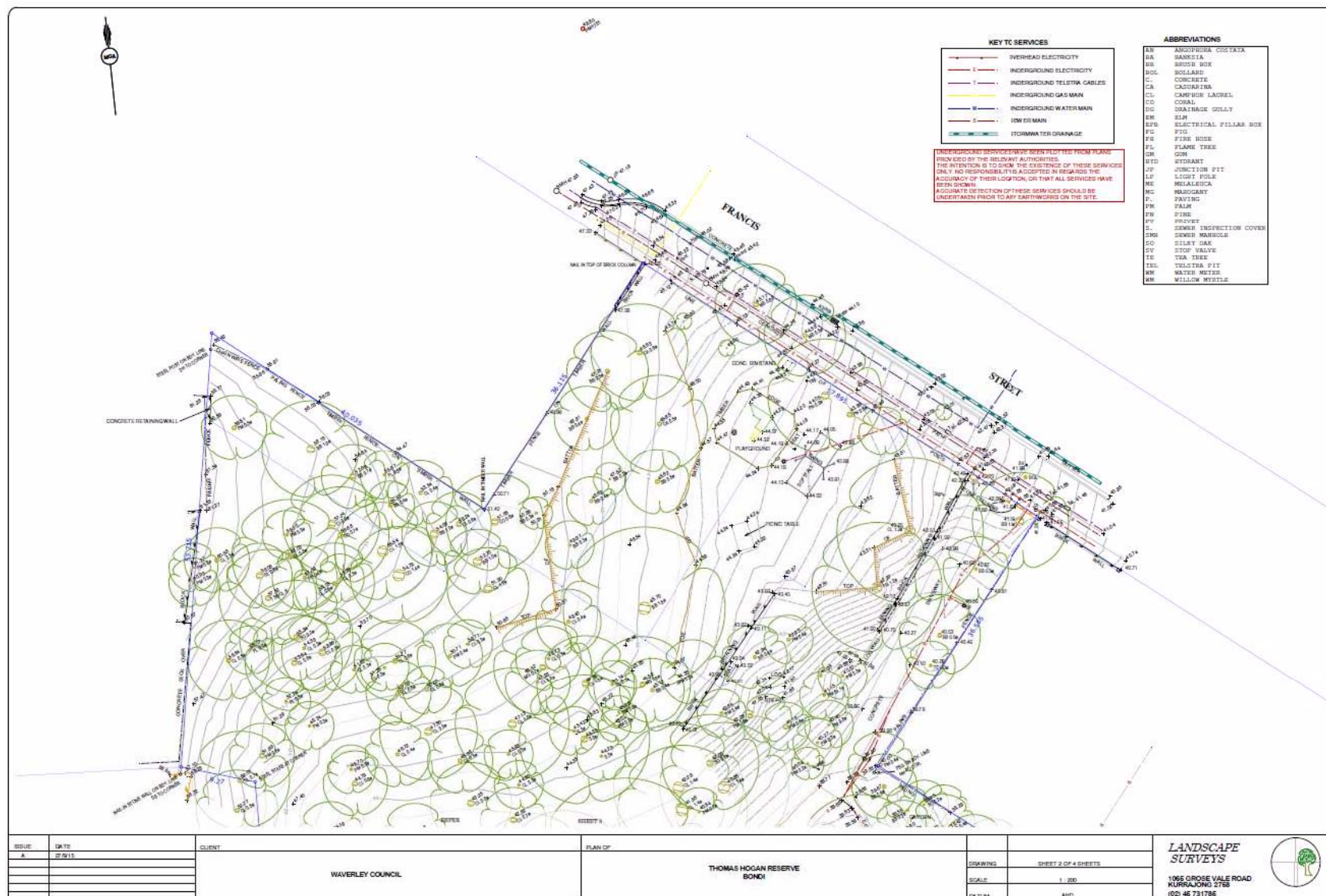


Figure 1c-2.
Survey Plan of Thomas Hogan Reserve for Waverley Council
(Sheet 2 of 4) (Landscape Surveys, 2015)

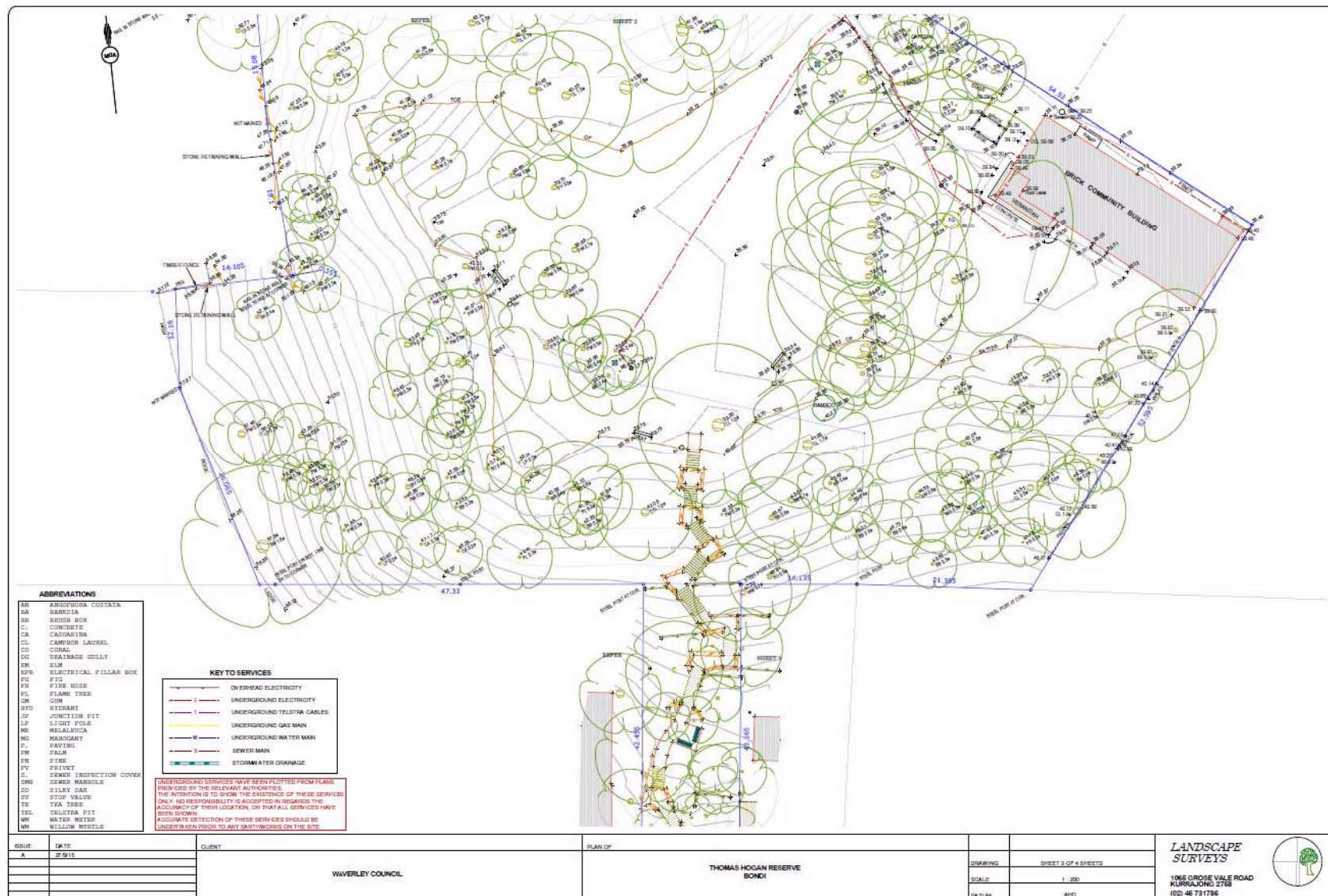


Figure 1c-3.
Survey Plan of Thomas Hogan Reserve for Waverley Council
(Sheet 3 of 4) (Landscape Surveys, 2015)

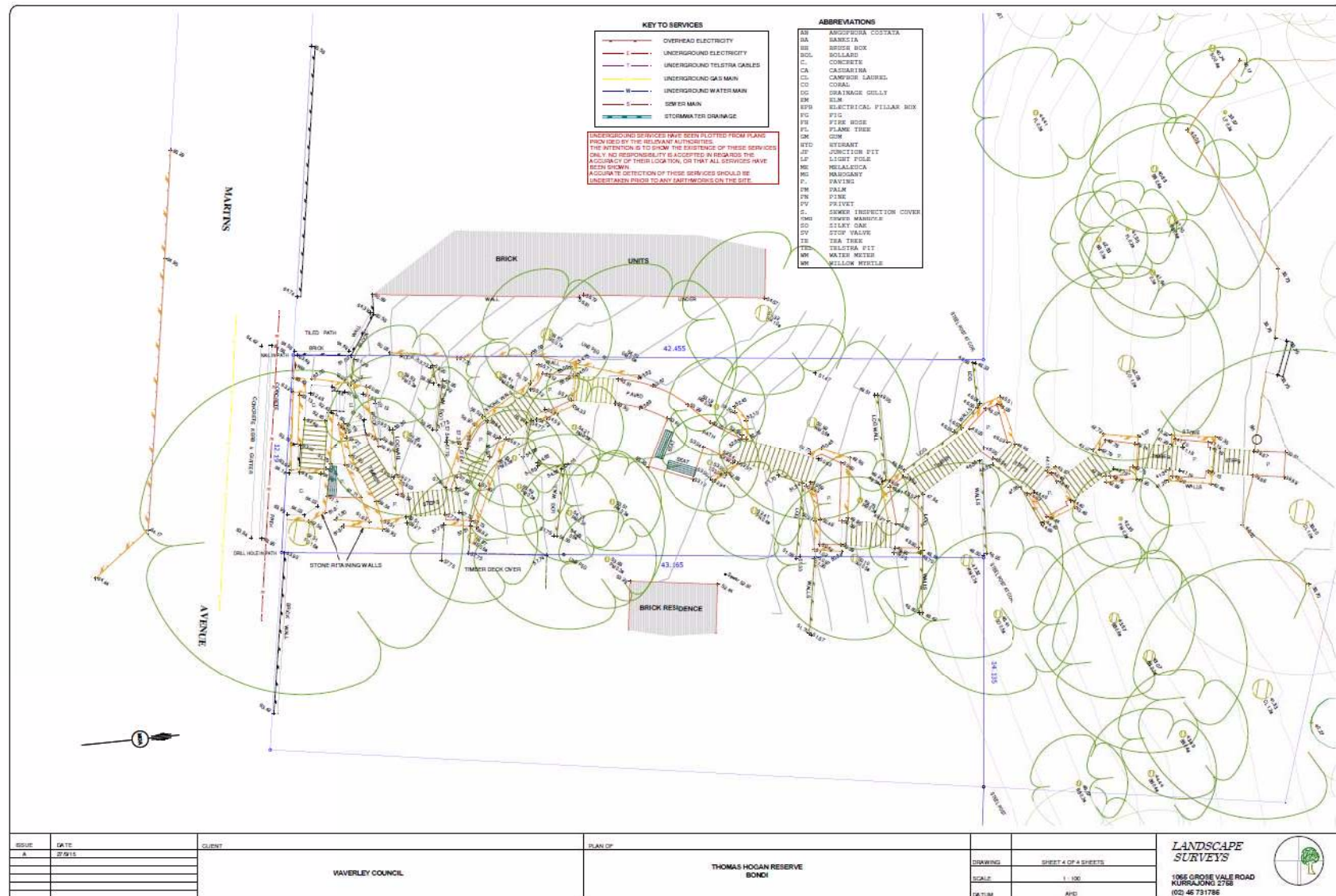


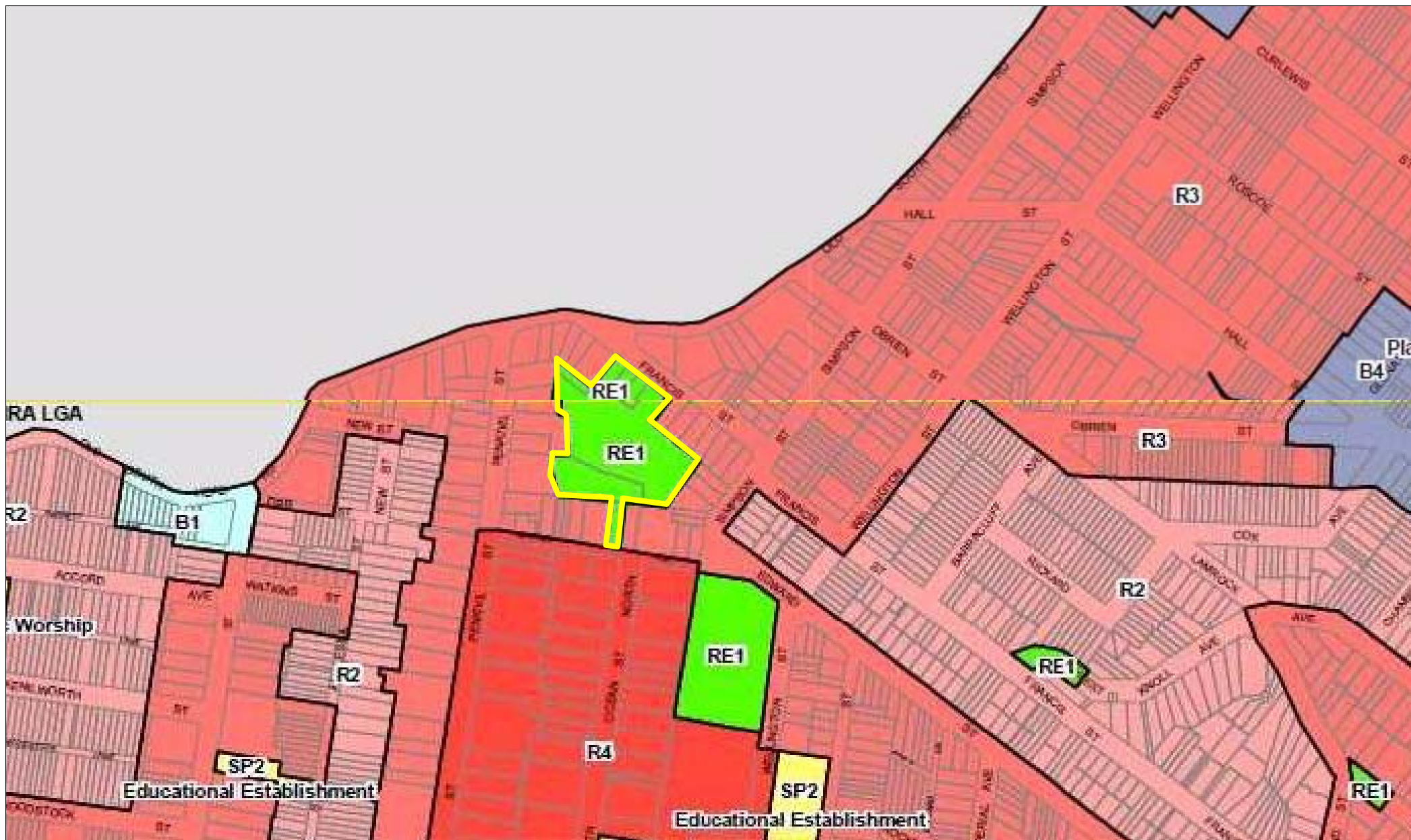
Figure 1c-4.
Survey Plan of Thomas Hogan Reserve for Waverley Council
(Sheet 4 of 4) (Landscape Surveys, 2015)



 Site boundary

0 30 60
metres

Figure 1d.
Site boundary overlaid on to the
SIXmaps 1943 aerial photograph



- | | |
|---|---|
|  Site boundary |  R4-High Density Residential |
|  RE1- Public Recreation |  SP2- Infrastructure |
|  R2-Low Density Residential |  B4- Mixed Use |
|  R3- Medium Density Residential |  B1-Neighbourhood Centre |

Figure 2a.
Site boundary overlaid on Land
Zoning Map LZW_04 (Waverley LEP 2012)

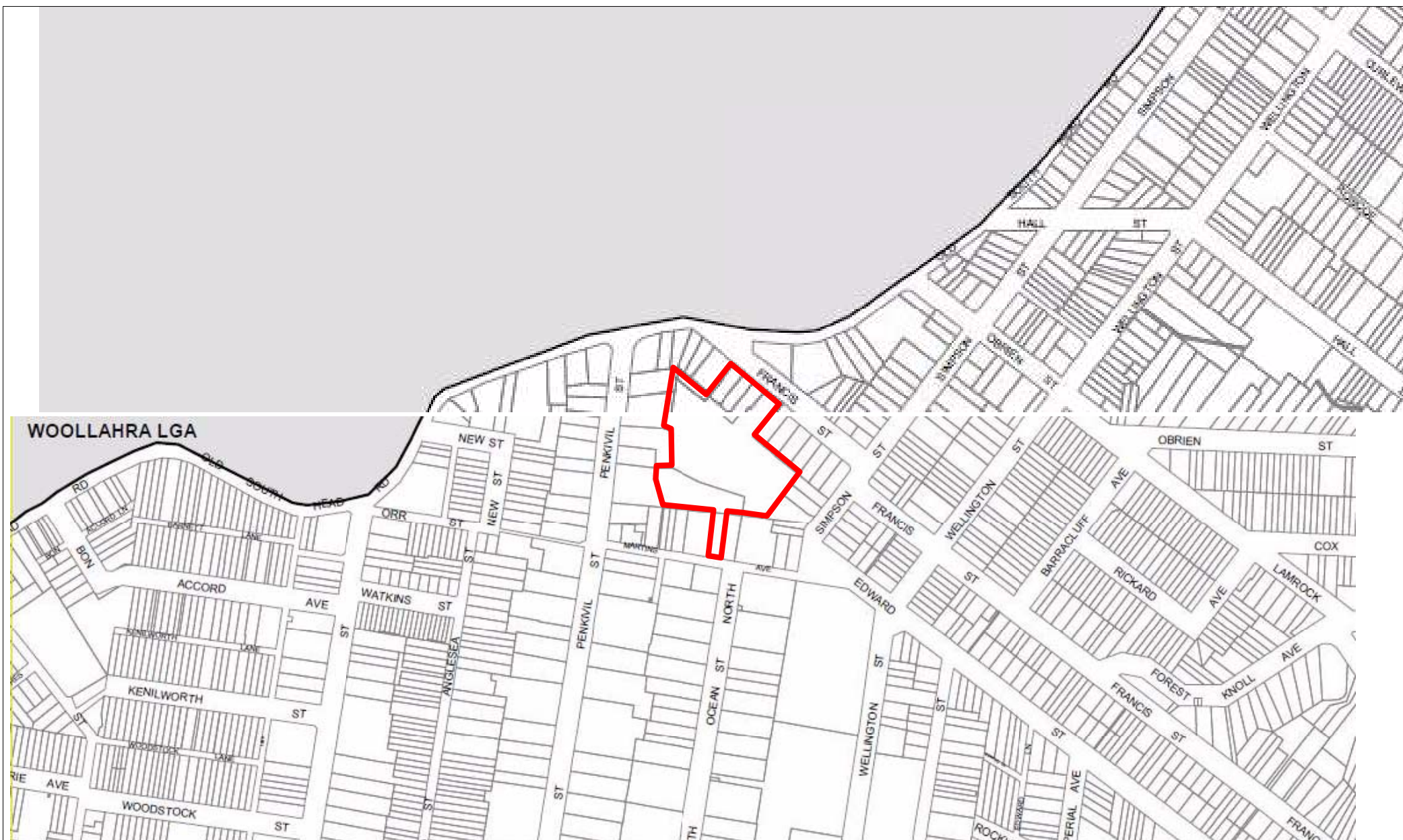


Figure 2b.
Site boundary overlaid on Biodiversity Maps BIO_004 and BIO_004 (Waverley LEP 2012)



Figure 3a.
Site boundary overlaid on the Sydney 1:100,000
Geology map (Herbert an West, 1983)

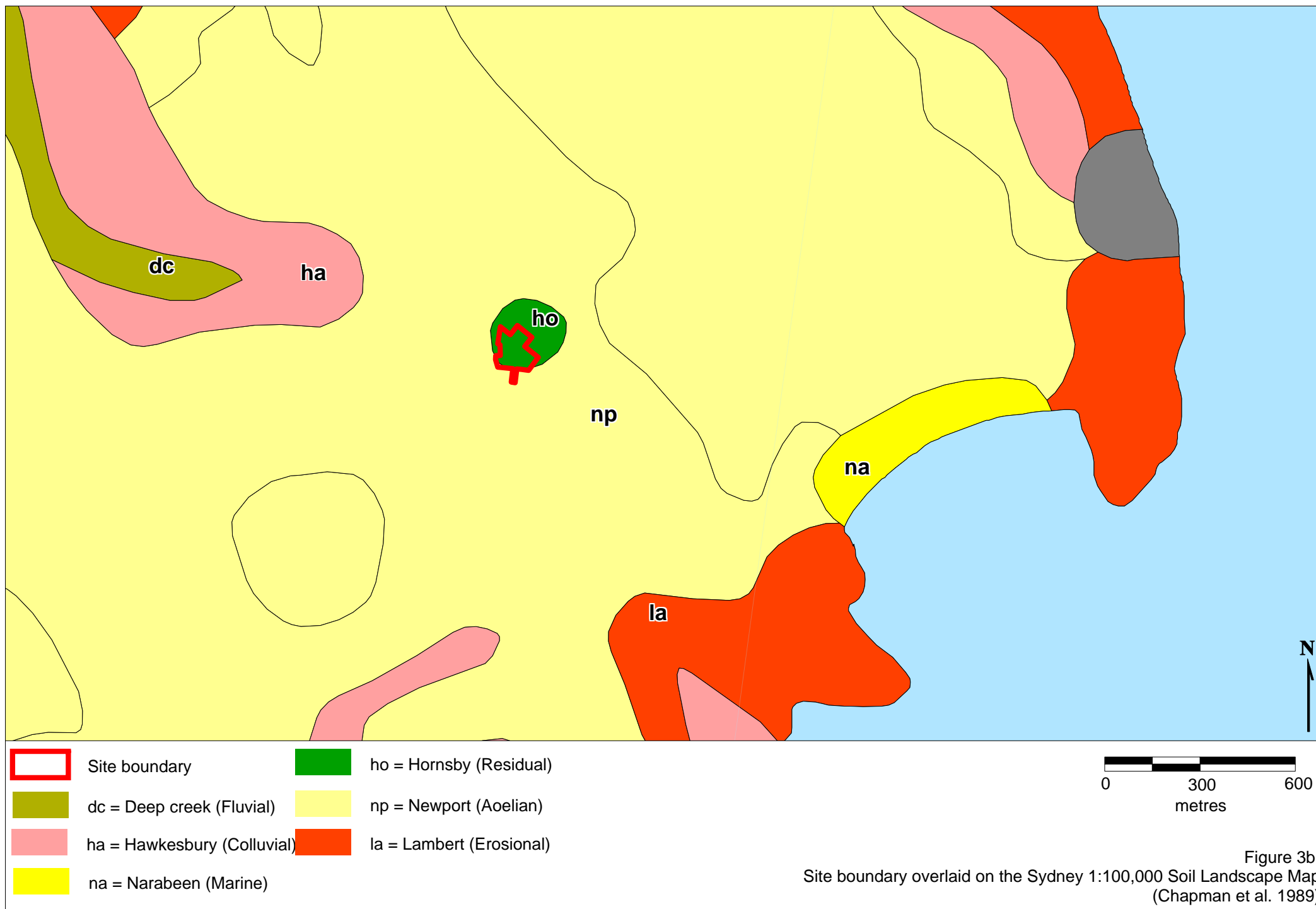


Figure 3b.
Site boundary overlaid on the Sydney 1:100,000 Soil Landscape Map
(Chapman et al. 1989)



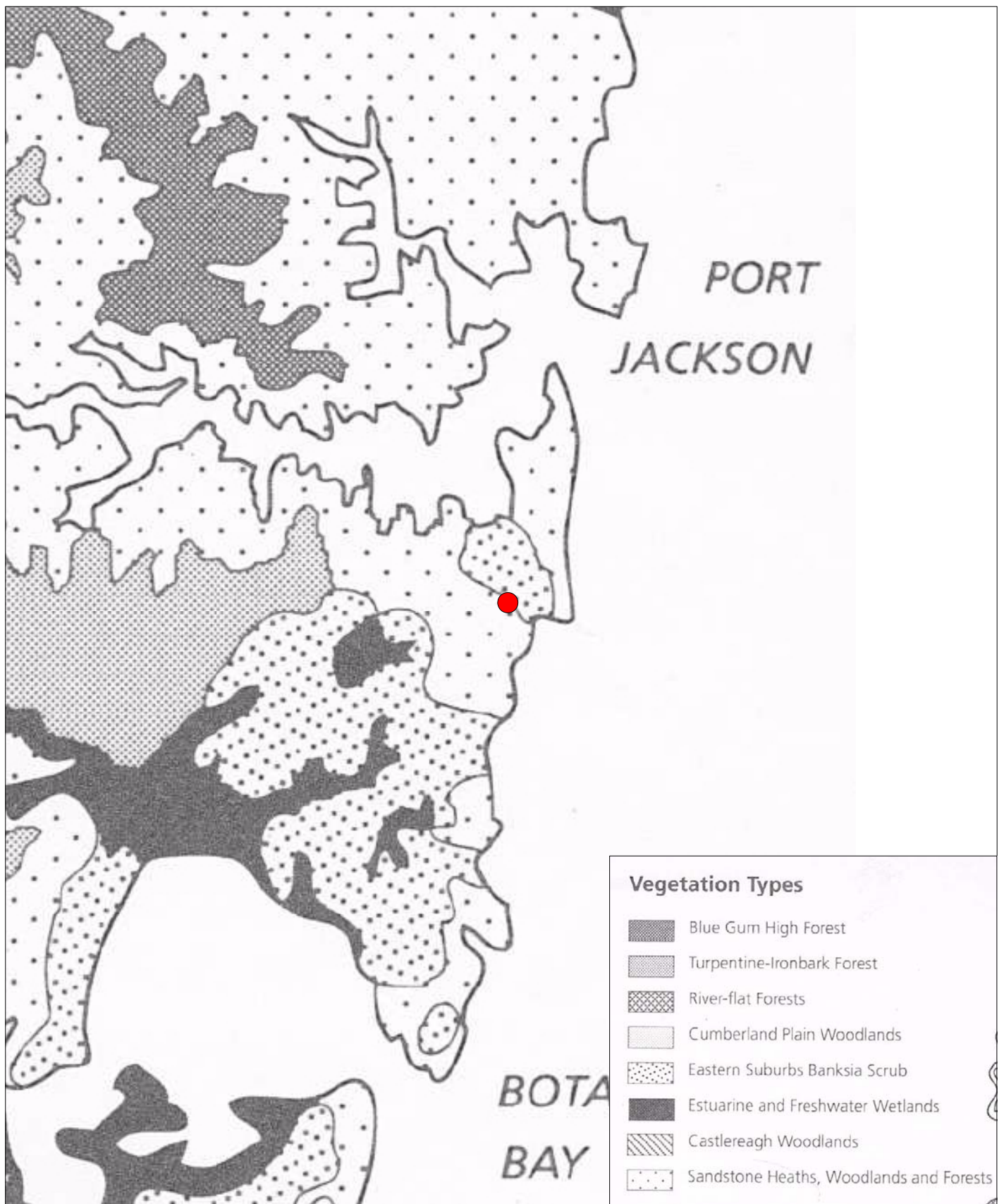
- ▬ Site boundary
- ▬ Transects
- Soil sample sites

Figure 3c.
Transect, soil sample sites and site boundary
overlaid on the Nearmap aerial (dated 11 August 2015)



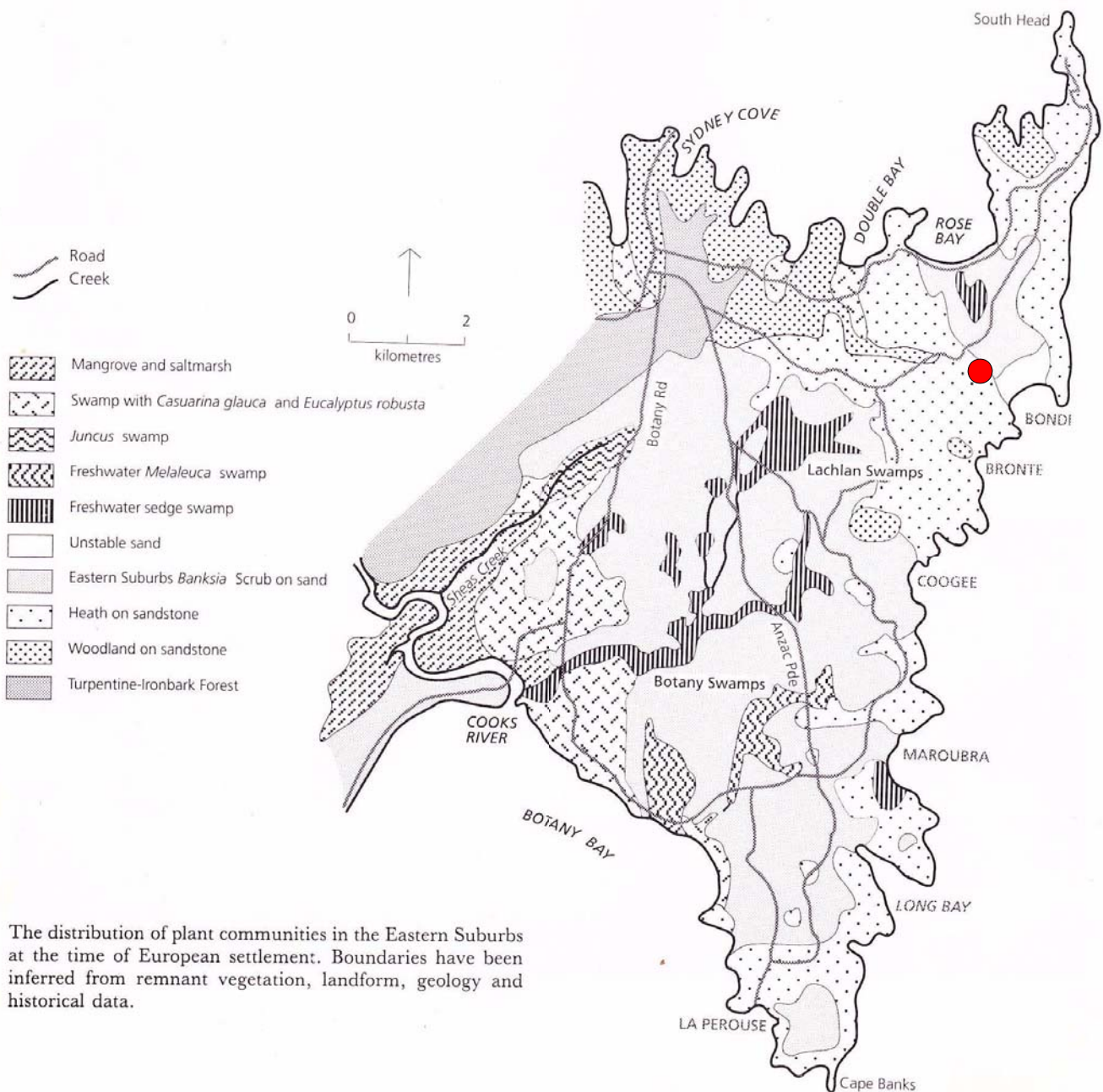
- ▬ Site boundary
- ▬ Transects
- Soil sample sites

Figure 3c.
Transect, soil sample sites and site boundary
overlaid on the Nearmap aerial (dated 11 August 2015)



● Approximate location of the Study Area

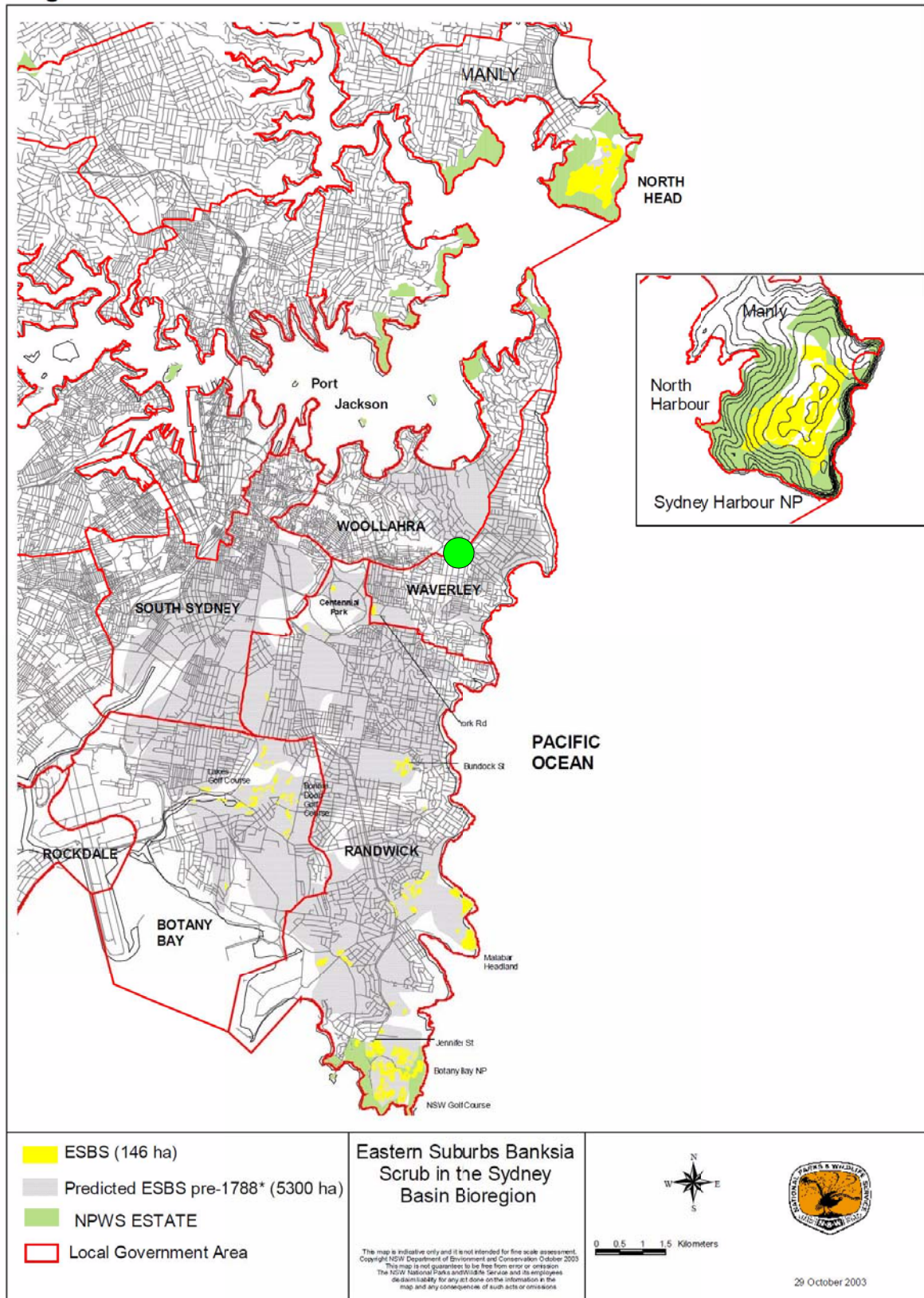
Figure 4a.
Vegetation Types present in the Sydney district east of the
Nepean-Hawkesbury River in 1788 (Benson and Howell, 1990)



● Approximate location of the study area

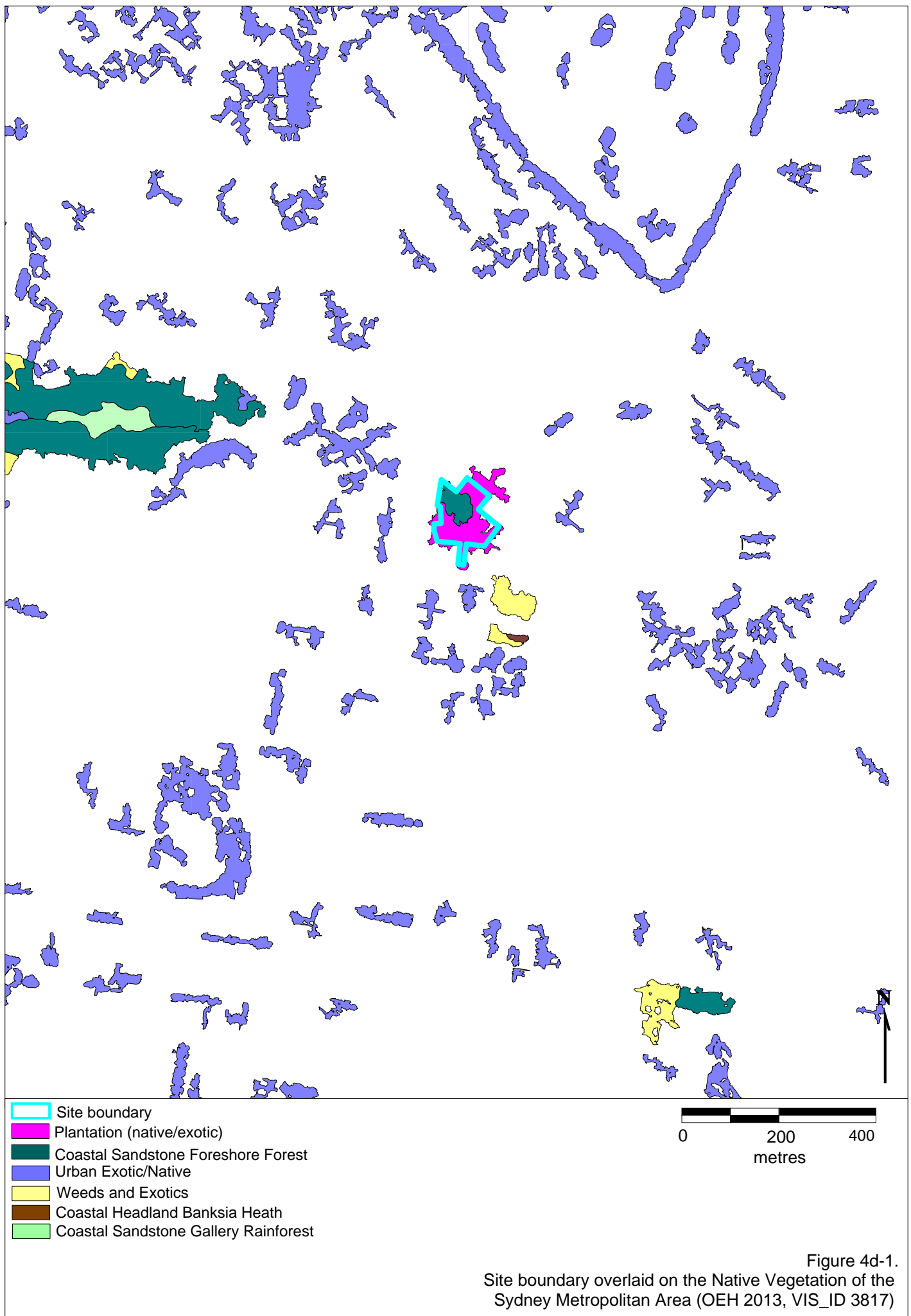
Figure 4b.
Plant communities in the Eastern Suburbs at the
time of European settlement (Benson and Howell 1990b)

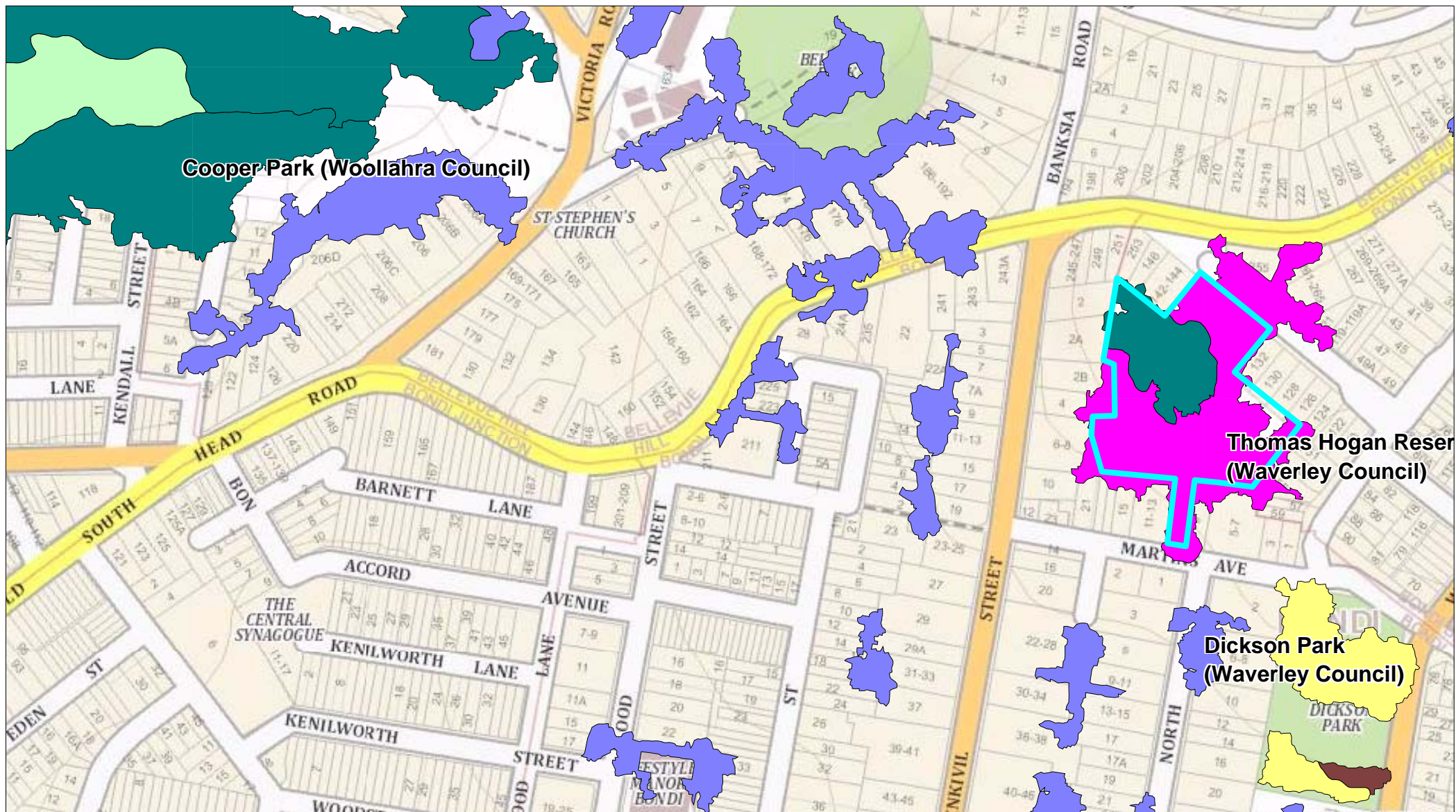
Figure 1. Eastern Suburbs Banksia Scrub



 Approximate location of the study area

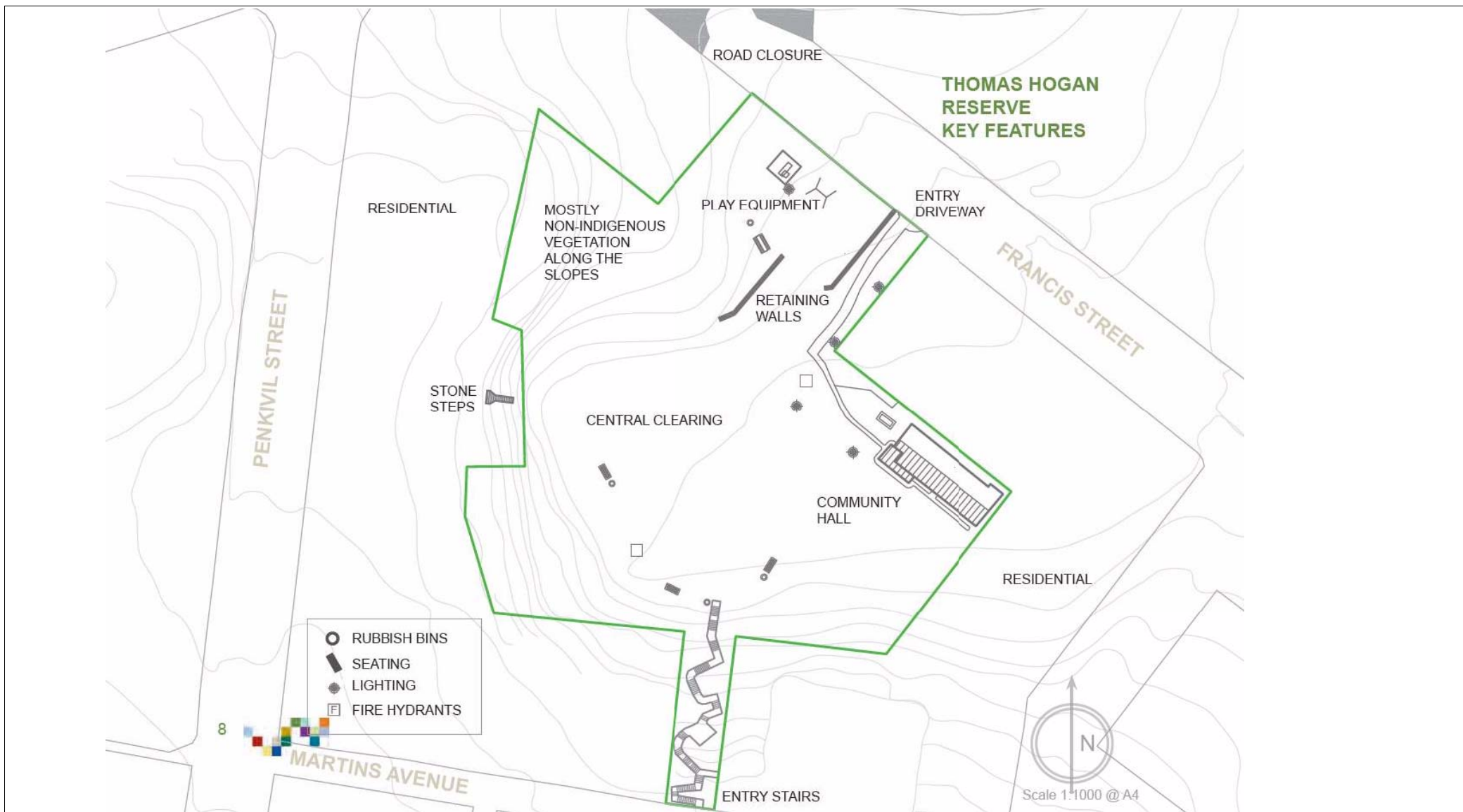
Figure 4c.
 Current and predicted area of Eastern Suburbs Banksia Scrub in the Sydney Basin Bioregion
 (Eastern Suburbs Banksia Scrub Endangered Ecological Community Recovery Plan, February 2004)





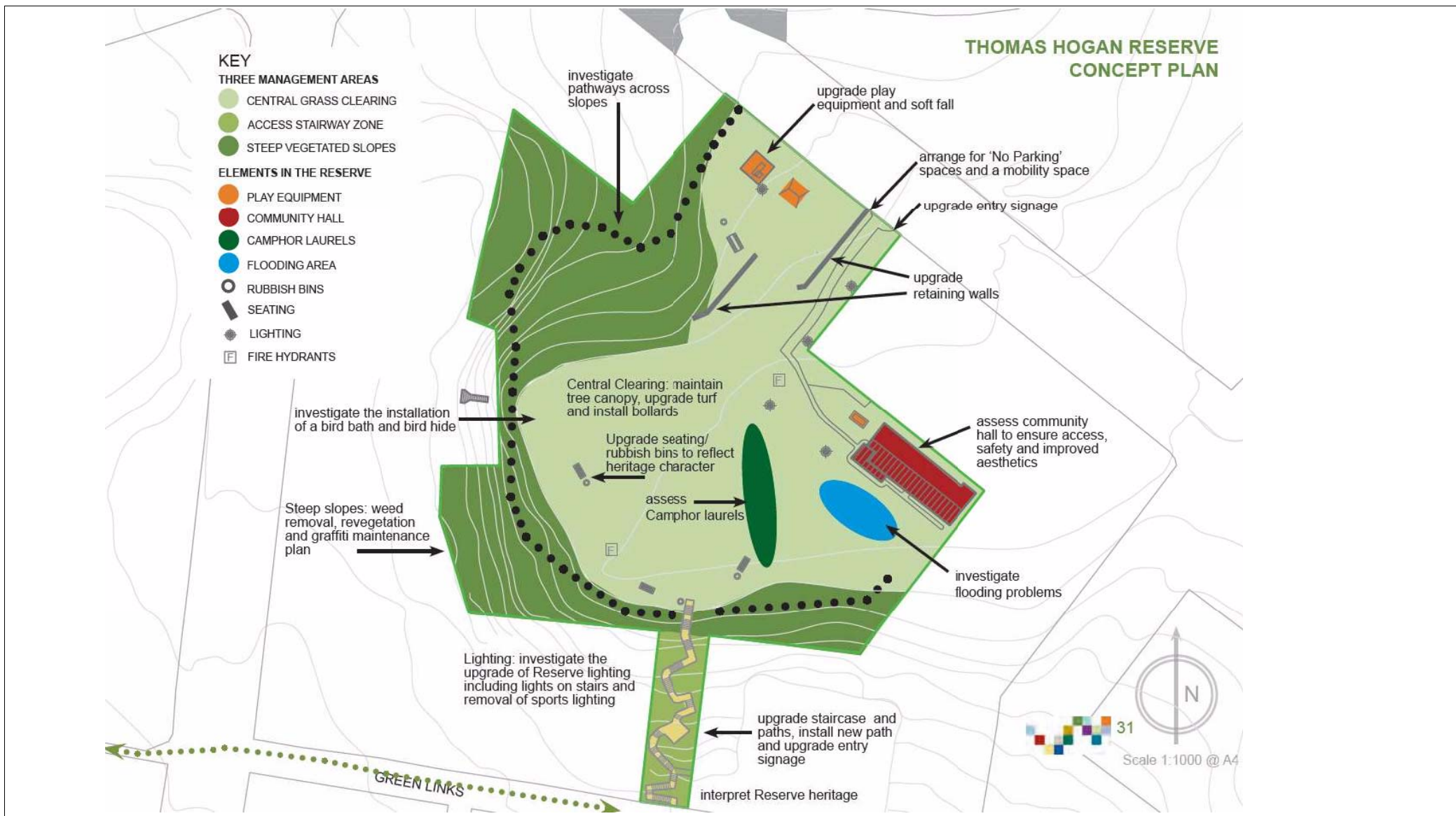
- Site boundary
- Plantation (native and/or exotic)
- Coastal Sandstone Foreshores Forest
- Urban Exotic/Native
- Weeds and Exotics
- Coastal Headland Banksia Heath
- Coastal Sandstone Gallery Rainforest

Figure 4d-2.
Site boundary overlaid on the Native Vegetation of the
Sydney Metropolitan Area (OEH 2013, VIS_ID 3817) and SIXmaps NSW Map



 Site boundary

Figure 5a-1.
Tomas Hogan Reserve Key features (Thomas Hogan Reserve Plan of Management 2011-2021
prepared by Waverley Council, Recreation & Community Planning & Partnerships Division, 2011)



Site boundary

Figure 5a-2.
Tomas Hogan Reserve Concept Plan (pg 31 of Thomas Hogan Reserve Plan of Management 2011-2021
prepared by Waverley Council, Recreation & Community Planning & Partnerships Division, 2011)

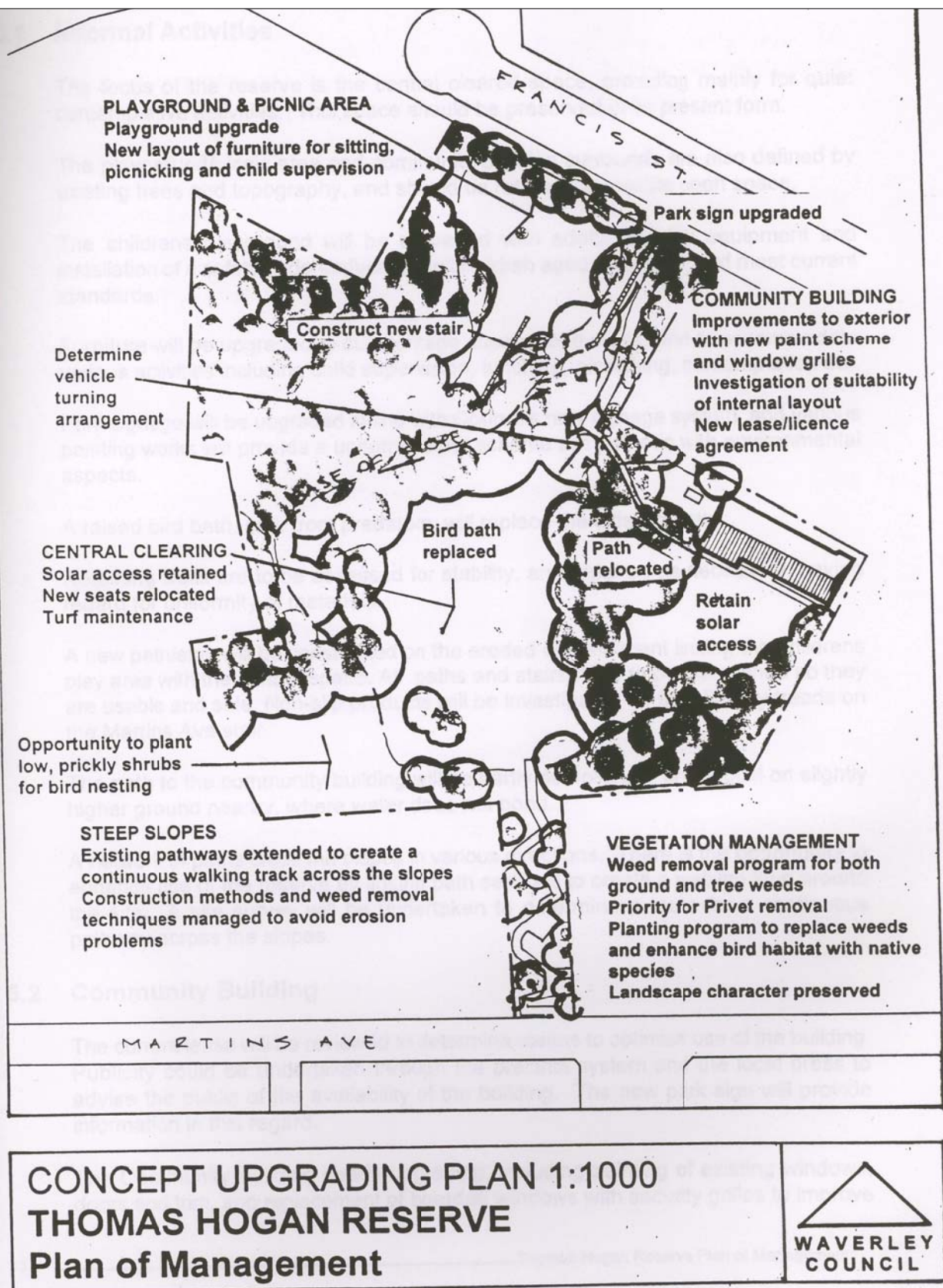






Figure 5b.
 Concept upgrading plan 1:1000 from the Thomas Hogan Reserve
 Plan of Management (Waverley Council, 1998?)



-  Site boundary
-  Transects
-  Spot locations
-  10m radius surrounding Spot assessed

0 30 60
Metres (m)

Figure 6.
Transect, spot locations and site boundary
overlayed on the Nearmap aerial (dated 11 August 2015)