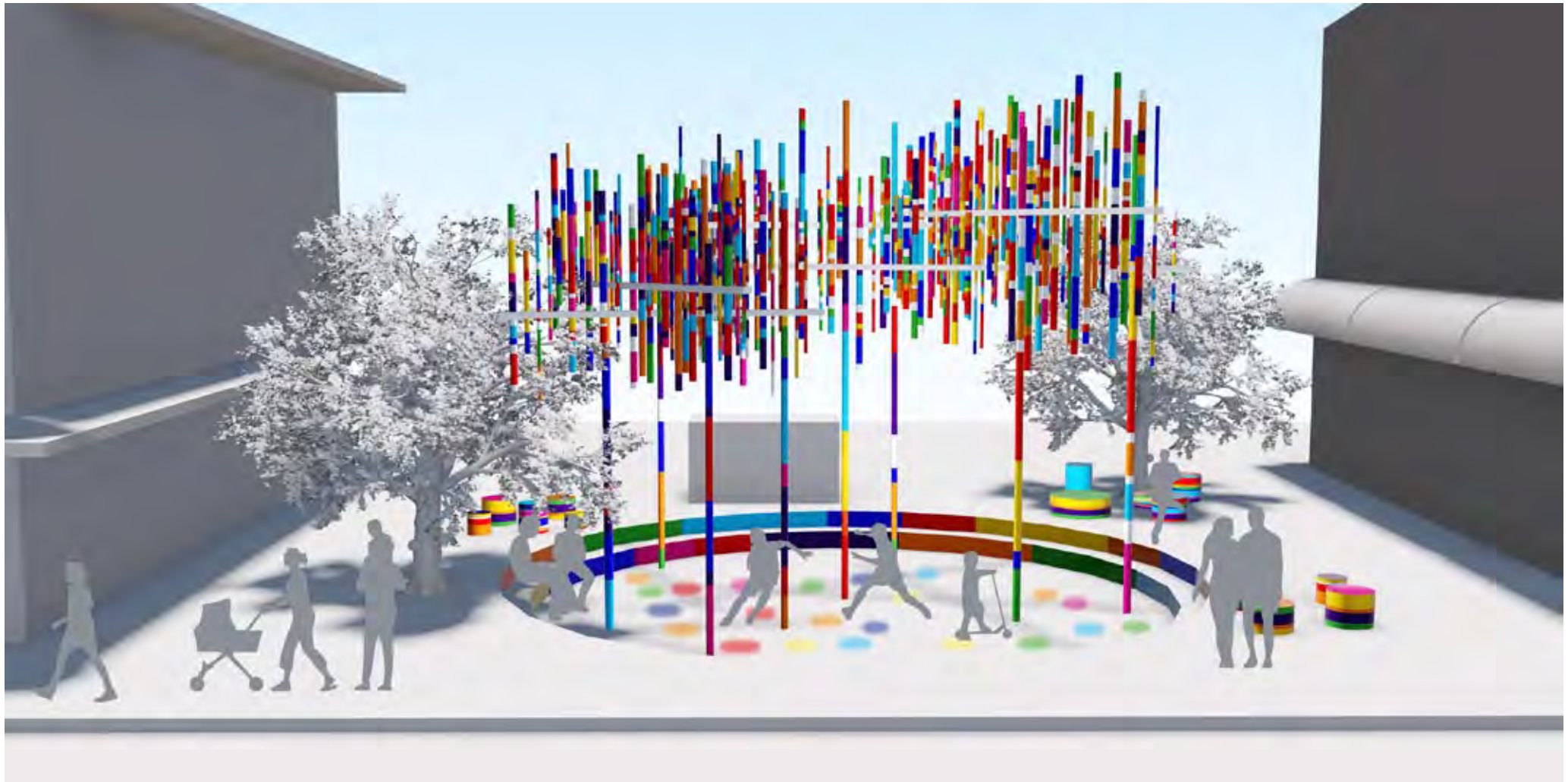


‘pH! - people HERE!’ Communal Meeting Place - Gould and Roscoe St Intersection, Bondi Beach



‘pH! - people HERE!’ Communal Meeting Place - Gould and Roscoe St Intersection, Bondi Beach



‘pH! - people HERE!’ Communal Meeting Place - Gould and Roscoe St Intersection, Bondi Beach



‘pH! - people Here!’

Artwork Description

‘pH!’ communal meeting place references and integrates into the artwork the colour code spectrum of pH litmus test markers. Energetic and vibrant colour speaks to people on a personal and collective level, and connects with a diverse demographic through the universal language of colour. This is pertinent to a site with significant usage by local and wider reaching International visitor communities.

‘pH!’ weaves fluidly through the site with an iconic and contemporary presence that creatively transforms the space and overlays a ‘sense of place’ through inclusivity, identity and meaning.

Thematic Context

‘pH’ litmus testing is an empirical and scientific tool of measurement and quality through colour grading and markings. This is thematically interpreted as an analogy of communal and self measure that recognises a need to feel included, be acknowledged, respected and connected to each other.

As a local environmental paradigm; ‘pH’ can be considered as metaphor for sustainable measurement of ocean, freshwater, soil and atmospheric health.



View from Gould St to site



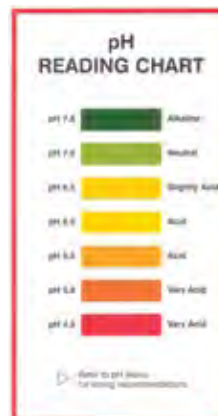
View from Roscoe St to site



View from Gould St to Bondi Beach



Plantings on site

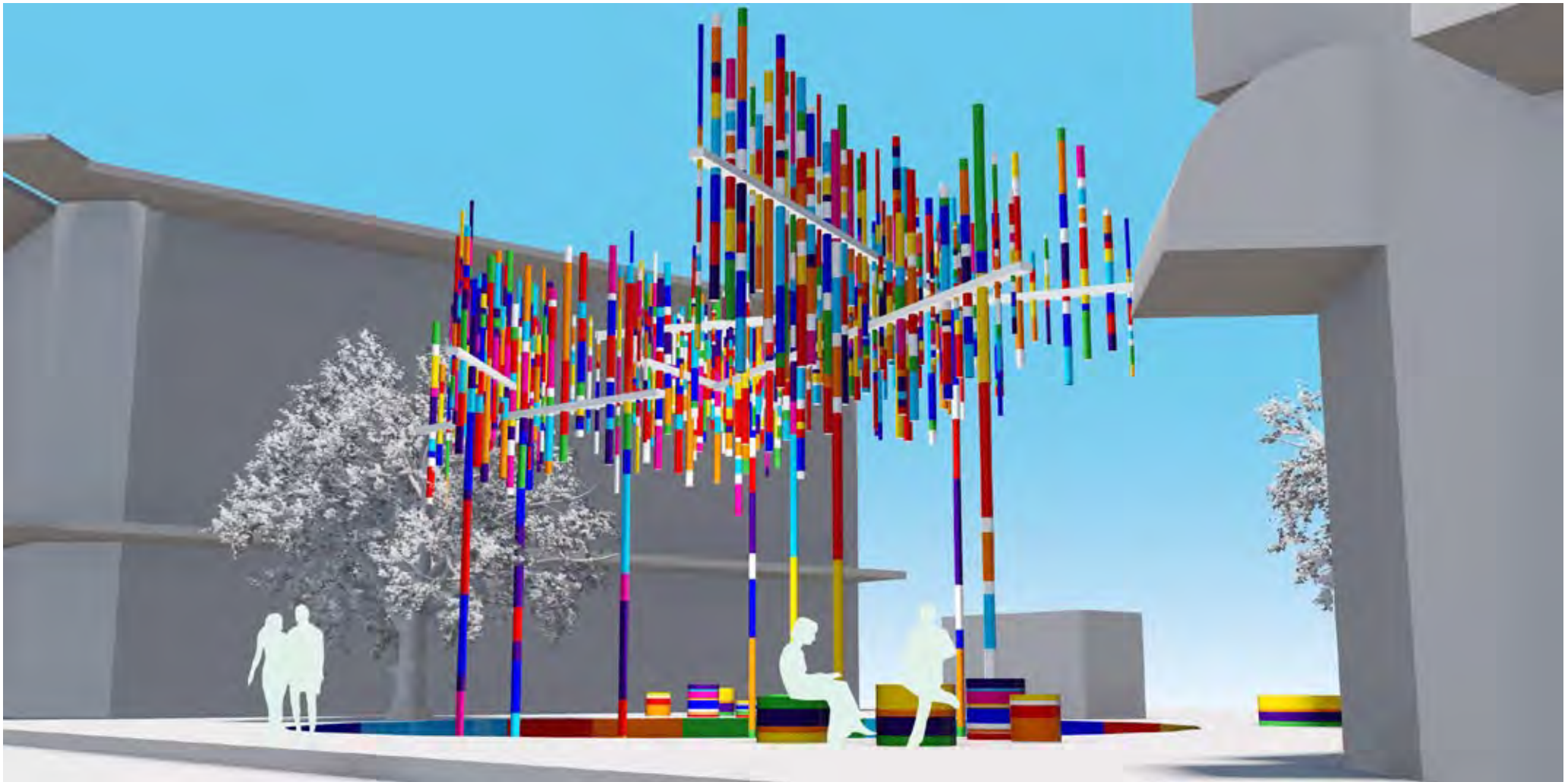


Night view from Gould St to site



View from above

‘pH! - people HERE!’ Communal Meeting Place - Gould and Roscoe St Intersection, Bondi Beach



‘pH! - people HERE!’ Communal Meeting Place - Gould and Roscoe St Intersection, Bondi Beach



Response to Site

‘pH!’ communal meeting place will be holistically designed in collaboration with Waverley Council landscape architects, urban designers, and visual art team to respond to the site via:

- Design and planning approach mindful of the multiplicity of audiences
- Day and night time use, sensory engagement and interactivity
- Future spatial adaptability and reconfiguration
- Consolidate close and distant street and beach vista connections
- ‘Experiential ecology’ - planting with texture, colour and scent
- Provision for different moods, levels of ability and activity
- Opportunity for community workshops to design artwork colour patterns

A combination of artwork form and spatial voids create a welcoming ‘communal open room’ space with dappled shade like a floating forest canopy providing comfort and sense of security.

The elevated vertical sculptural form base end caps are fitted with LED down lights that turn on and off in a random kinetic pattern encouraging interactive playful games of ‘catch the light spot’ projected on the ground.

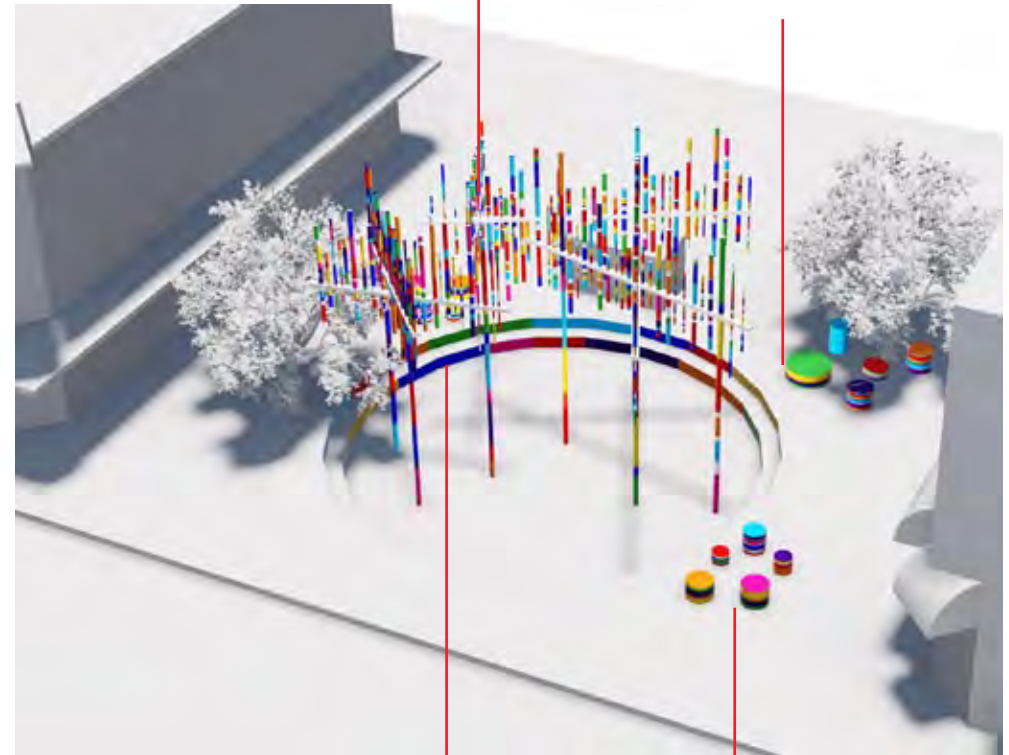
A sunken step seating amphitheatre with the option of night time LED illumination of the perimeter ring steps, invites communal interaction, engagement, and activity. Small seating clusters on the ground level plane under trees offers opportunity for more intimate conversations. Located next to the seats are communally painted circular planters with endemic plant species and locally grown herbs.

Community Engagement and Participation

‘pH!’ artwork accommodates a community participation workshop component to make models and compose colour patterns through hands on activities that will directly inform the final artwork design. Community participation can be extended to the application of colour banding to the vertical artwork elements prior to installation.

A combination of artwork form and spatial voids create a welcoming ‘communal open room’ space with dappled shade like a floating forest canopy providing comfort and sense of security.

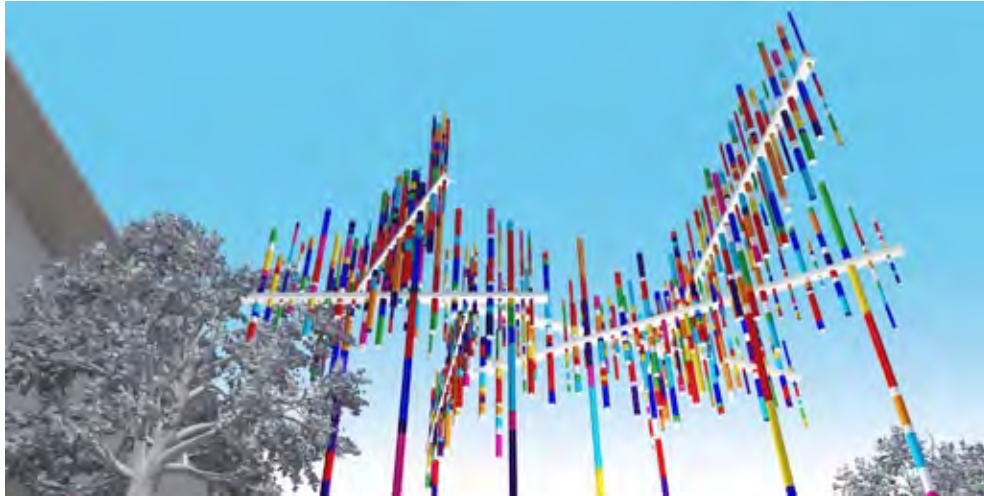
Small seating clusters on the ground level plane under trees offers opportunity for more intimate conversations.



A sunken step seating amphitheatre with the option of night time LED illumination of the perimeter ring steps, invites communal interaction, engagement, and activity.

Communally painted seats circular planters with endemic plant species and locally grown herbs

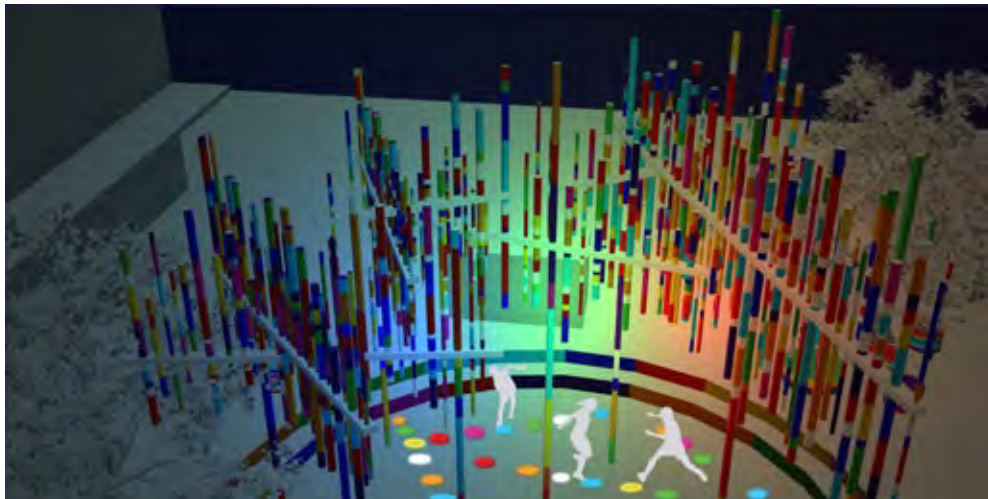
‘pH! - people HERE!’ Communal Meeting Place - Gould and Roscoe St Intersection, Bondi Beach



Powerful visual impact but not dominating



Small seating clusters on the ground level plane under tree shade offers opportunity for more intimate conversations.



The elevated vertical sculptural form base end caps are fitted with LED down lights that turn on and off in a random kinetic pattern encouraging interactive playful games of ‘catch the light spot’ projected on the ground.



Vertical elements sporadically fitted with colour glass discs in ends to cast colour day shadows

‘pH! - people HERE!’ Communal Meeting Place - Gould and Roscoe St Intersection, Bondi Beach



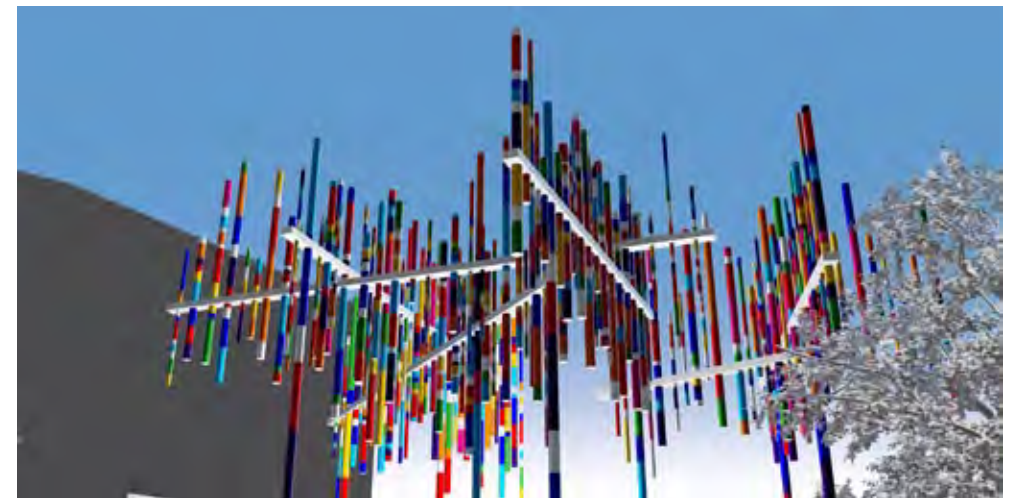
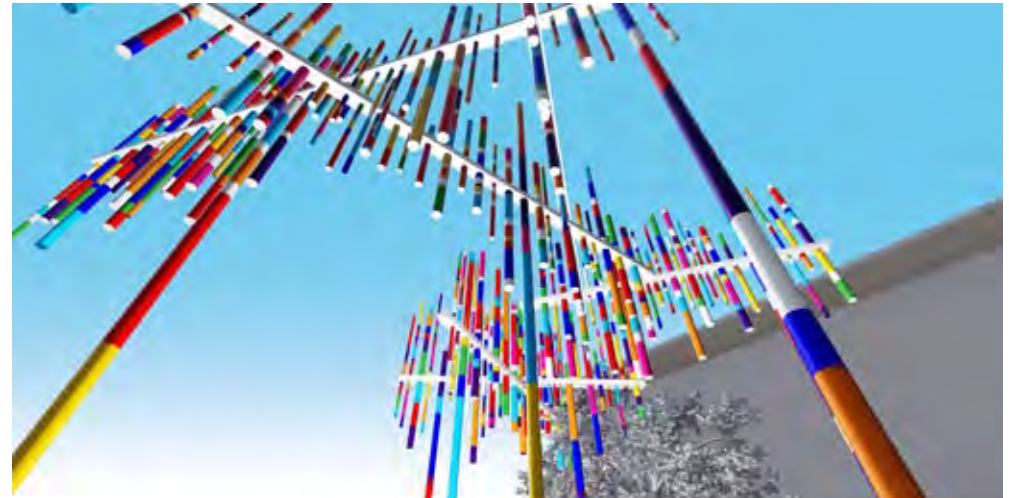
ARTIST PROFILE

Award winning artist Graham Chalcraft runs a multi-disciplinary practice specialising in the creation of site-specific public art, place-making and interpretation projects for private and public spaces in built and natural environments. Graham holds a Masters Degree in Public Art & Design, London Institute (formerly Chelsea School of Art), UK. He is commissioned extensively throughout Australia and overseas.

He regularly presents at national and international conferences and delivers workshops in public art, placemaking, community cultural development, sustainability, environmental art / education and interpretation.

Both the commission and gallery practice draw on a strong interest in art-science-ecology and interpretation of social, cultural, heritage and ecological vestiges presented in a contemporary manner. This includes the integration of repurposed / recycled materials, water sensitive urban design (WSUD) bio-filtration ‘earthwork / land art’, solar distillation sculptures, renewable energy for off grid kinetic powered movement, lighting and sonic environments.

Community & stakeholder engagement through ‘hands on’ creative based facilitation workshop activity processes act as a key role in designing, planning and implementing projects.



Vertical elements made of metal and painted with base coat. Colour banding painted or applied with colour signage vinyl adhesive. Both treatments have the potential colour band patterns to be designed through community workshops and applied to the artwork prior to final installation through community ‘working bee’ activities.

‘pH! - people HERE!’ Communal Meeting Place - Gould and Roscoe St Intersection, Bondi Beach



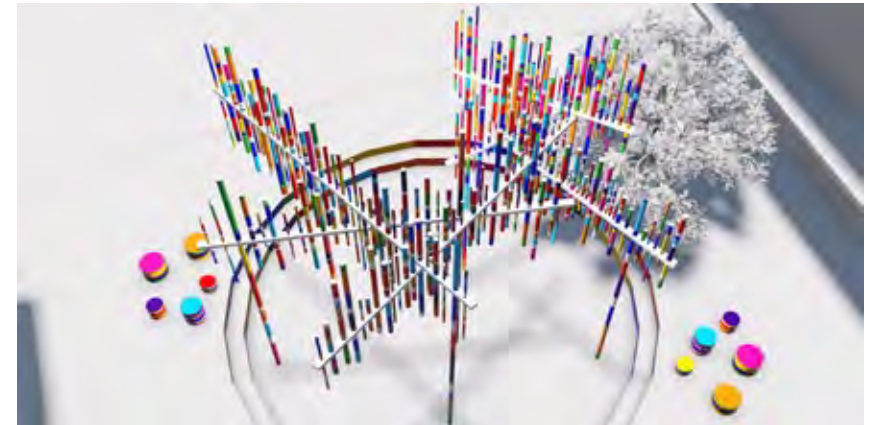
Landscape Options - Propriety street furniture repainted with patterns created through community workshop process



‘pH!’ planter boxes with illuminated edge lighting through landscape terrain form



Site Options



A sunken step seating amphitheatre with the option of night time LED illumination of the perimeter ring steps, invites communal interaction, engagement, and activity.



Seats with inner lighting illumination